



*At St. Charles, all are invited to
meet Christ, know Christ,
love Christ and serve Christ.*

August 18, 2024

TWENTIETH SUNDAY IN ORDINARY TIME



20th Sunday
IN ORDINARY TIME

*"For my flesh is true food, and
my blood is true drink."
(John 6:55)*

St. Charles Parish & School | 313 Circle Drive, Hartland, WI 53029
262-367-0800 | www.stcharleshartland.com | email: parish@stcharleshartland.org



WELCOME TO ST. CHARLES - WE ARE HERE FOR YOU



PASTOR
Fr. Ken Omernick



ASSOCIATE PASTOR
Fr. Ariel Orozco

ST. CHARLES STAFF TEAMS

ASSOCIATE PASTOR & Becoming Fully Catholic:
Fr. Ariel Orozco, aorozco@stcharleshartland.org

TEACHING PARISH SEMINARIAN:
Timothy Heyrman, theyrman@sfs.edu

SCHOOL TEAM 262-367-2040
Principal/School Team Lead: Dan Garvey, Ext. 208,
dgarvey@stcharleshartland.org
School Administrative: Lisa Moehrke, Ext. 206,
school@stcharleshartland.org
School Administrative: Karen Dejewski, Ext. 206,
kdejewski@stcharleshartland.org
School Administrative: Nina Wolf, Ext. 206,
nwolf@stcharleshartland.org
School Administrative: Amanda Harrison, Ext. 206,
aharrison@stcharleshartland.org

WORSHIP TEAM
Worship Lead: Peg Kasun, Ext. 225,
pkasun@stcharleshartland.org
Liturgist: Elizabeth Thompson, M.Div., 262-367-6704
ethompson@stcharleshartland.org
Music Director: Dr. Aaron Mathews, Ext. 225,
amathews@stcharleshartland.org
Wedding Coordinator: Dee Anne Hamer, Ext. 215,
dhamer@stcharleshartland.org

DISCIPLESHIP TEAM
Adult Discipleship Lead: Maria Notch, Ext. 220,
mnotch@stcharleshartland.org
Adult Discipleship Coordinator: Hannah Osborne, Ext. 220,
hosborne@stcharleshartland.org
Children's Discipleship Lead: Shelly Buchan, Ext. 205,
sbuchan@stcharleshartland.org
Student Discipleship Lead: Bri Alexander, Ext. 221,
balexander@stcharleshartland.org
Baptism Coordinator: Mary Jo Romportl, Ext. 200,
mjromportl@stcharleshartland.org

OPERATIONS TEAM

Operations Manager/Team Lead: TBD
Facilities Manager: Mike Cattani, Ext. 210,
mcattani@stcharleshartland.org
Maintenance Manager: Tim Orzechowski, Ext. 217,
torzechowski@stcharleshartland.org
Accounting: Dee Anne Hamer, Ext. 215,
dhamer@stcharleshartland.org
Administrative: Brenda Zingsheim, Ext. 215,
bzingsheim@stcharleshartland.org
Cornerstone/Safeguarding: Karen Dejewski, Ext. 215,
cornerstoneproject@stcharleshartland.org

COMMUNICATIONS & STEWARDSHIP TEAM

Communications & Stewardship Team Lead: Allison Caswell,
Ext. 202, acaswell@stcharleshartland.org
Assistant to the Pastor: Terrie Carew, Ext. 224,
tcarew@stcharleshartland.org
Graphic Design Specialist: Renee Krier, Ext. 224,
rkrier@stcharleshartland.org
Administrative: Kathy Gillstrom, Ext. 200,
kgillstrom@stcharleshartland.org
Administrative: Mary Jo Romportl, Ext. 200,
mjromportl@stcharleshartland.org

PARISH OFFICE: 262-367-0800,
Mon. - Fri., 8 am - 4 pm
EMAIL US: parish@stcharleshartland.org
PARISH SCHOOL: 262-367-2040



school@stcharleshartland.org
WEBSITE & LIVESTREAM:
www.stcharleshartland.com or
scan QR code with phone camera

WELCOME TO ST. CHARLES - WE ARE HERE FOR YOU

SATURDAY MASS OF ANTICIPATION: 5:00pm
 SUNDAY MASS TIMES: 7:00am, 9:00am, 11:00am & 6:00pm
 WEEKDAY MASS: Monday - Friday: 8:30am & Saturday: 8:30am



Mass Intentions for the Week of August 18th

Sunday, August 18

7:00 am † Gerald Condon
 9:00 am † Zephyr Benoit
 11:00 am Living and Deceased Members of St. Charles
 6:00 pm † Emily Rose Sattler

Monday, August 19

8:30 am Special Intention

Tuesday, August 20

8:30 am † Richard Grybush

Wednesday, August 21

8:30 am Special Intention

Thursday, August 22

8:30 am † Clara Lawinger

Friday, August 23

8:30 am † John Dassow

Saturday, August 24

8:30 am † Maryanne Jurkowski
 5:00 pm † Dolores Lompa

Sunday, August 25

7:00 am † Albert & Elaine Oskey
 9:00 am † Clare Biedenbender
 11:00 am † Fred Keppe & Alys Hemmy
 6:00 pm Living and Deceased Members of St. Charles

EUCCHARISTIC ADORATION

Please see page 5 in this bulletin for more information about Adoration!



RECONCILIATION

Saturdays: 3:00pm - 4:00pm & Thursdays: 5:00pm - 6:00pm
 Please arrive within 30 minutes of the start time.
 We have one Priest on Saturdays and two Priests on Thursdays.

SACRAMENT OF THE SICK/ ANOINTING MASSES

Sacrament of the Sick Masses are the 2nd and 4th FRIDAYS of every month or by appointment with Fr. Ken or Fr. Ariel (call the Parish Office).

OUTREACH SERVICES TEAM: Terri Blazek: 262-367-7608, jtblazek@wi.rr.com

TO ASK FOR PRAYERS or to be added to the email list, please email: prayernetwork@stcharleshartland.org

FOR EMERGENCY PRAYERS, please email: emergencyprayers@stcharleshartland.org

Printed weekly prayer sheets are available on the information wall.

ST. VINCENT DE PAUL: if you need food, shelter or assistance call 262-367-0800 (Parish Office)

NEED HOME COMMUNION:
 For information call 262-367-0800 (Parish Office)



WEDDING BANNS

2nd Bann ~ Jenna Nyhouse & Benjamin Kroeger
 2nd Bann ~ Maddie Greger & Zach Trivett



One of the easiest ways to support St. Charles Parish and School is through the secured online e-giving system.



PARISH SUPPORT
 THRU JULY 21ST

FISCAL YEAR
 JULY 1 THRU JUNE 30

2024 - 2025

Envelopes..... \$27,722.00
 Offertory..... \$3,437.69
 Weekend Total \$31,159.69
 E-Giving \$11,647.50
 YTD \$205,925.27

2023 - 2024

Envelopes..... \$27,528.90
 Offertory..... \$2,160.49
 Weekend Total \$29,689.39
 E-Giving \$8,977.25
 YTD \$168,836.96



THIS WEEKEND'S GOSPEL MEDITATION

20TH SUNDAY IN ORDINARY TIME

A priest I know was asked by a door-to-door evangelist, “Do you believe in Jesus?” He answered, “Yes, I do. But if I may ask you,” he continued, “Where do you experience Jesus’ body and blood?” His interlocutor responded somewhat confusedly, “I don’t. I just believe in him. That’s all that is needed.” Later my priest friend would relate to me, “The more I thought about it, that response struck me as totally inadequate. As human beings, we need to encounter Jesus’ body and blood, not just hear about him and mentally believe. Otherwise, Jesus is just a ghost.”

This week we see this central point as we arrive at the climactic moment of Jesus’ teaching on the Eucharist. Jesus has established the importance of believing in him as the “bread of life come down from heaven.” Belief deeply matters because it leads to a real, bodily encounter with Jesus through eating and drinking. That’s why Jesus emphasizes to an almost outrageous degree the non-metaphorical necessity to “eat my flesh and drink my blood” (John 6:54). The real presence of Jesus’ body and blood — he himself, truly, really, substantially — has been the Church’s treasure since Holy Thursday. Internal belief in the heart and the ritual act of eating and drinking the Eucharist, the Church has stubbornly insisted on both, not just one or the other.

This is not meant to criticize non-Catholic Christians who deeply trust and love Jesus, nor is it a triumphal elitist claim about the Catholic Mass. Rather it is a humble, trusting acknowledgement that God in Jesus comes to us in a way most proper to human beings: in our hearts and our bodies, faith and the Eucharist.

— Father John Muir ©LPi

PRAY WITH SCRIPTURE
Lectio Divina

15 minutes each day spent in God’s presence – reading, reflecting, responding and resting with his Word – adds up to 90 hours in one year. That is time well spent and a testimony to how a little at a time turns into something remarkable!

Sunday, August 25th Readings

Jos 24:1-2a, 15-17, 18b/Ps 34:2-3, 16-17, 18-19, 20-21, 22-23 (9a)/Eph 5:21-32 or 5:2a, 25-32/Jn 6:60-69

To find readings for the weekdays and/or Feast Days, please visit <https://bible.usccb.org/bible/readings>.

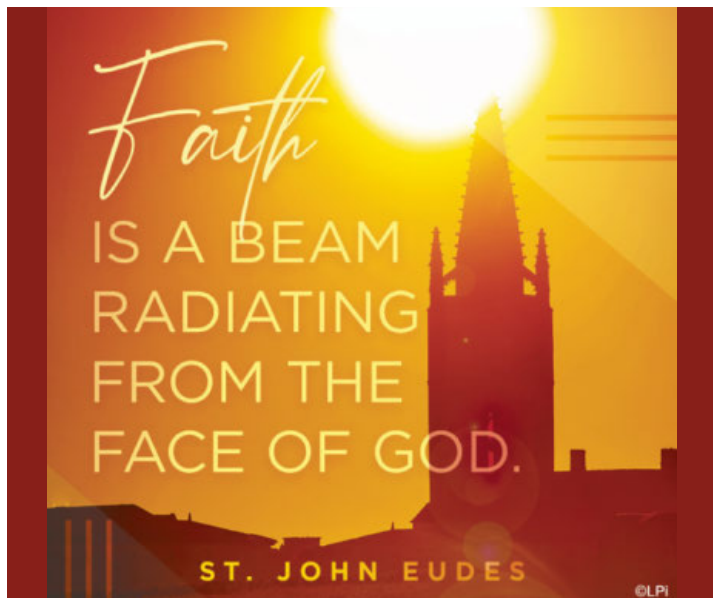
Reflection questions for Sunday, August 25th

- Upon entering the Promised Land and remembering the Exodus from Egypt, both Joshua and all twelve tribes of Israel pledged their faithful to God alone. What has God done in your life that you can acknowledge and celebrate?
- Toward the end of his letter to the Ephesians, Paul takes up the topic of husbands and wives. He speaks of the importance of mutual respect and love. What do you add as key parts for a successful marriage?
- John tells us that many of Jesus’s disciples stopped following him because they found some of his teachings too hard to accept. What keeps you following Jesus?

READ. REFLECT. RESPOND. REST.



Cut out and keep in your Bible for reference!





RECOGNIZE GOD IN YOUR ORDINARY MOMENTS

By Colleen Jurkiewicz Dorman

The Fullness of Life

Like any other child of the '90s raised by budget-conscious parents, I've spent my fair share of Sunday mornings in line at an Old Country Buffet, hot plate in hand. Kids ate for chump change on Sundays, and I never left that fine establishment without getting our money's worth. I always came away stuffed to the gills. But I never, ever remember feeling satisfied.

In fact, if I recall correctly, most of the time I felt rather empty. I was always thinking about the food I didn't get to eat — whatever I couldn't fit on my plate, or whatever they were bringing out from the kitchen just as we were about to leave.

As I've gotten older, it's a feeling I've encountered again and again, and not just at buffets. Haven't we all? The people you think are perfect reveal themselves to be deeply flawed. The things you want the most are never as satisfying to possess as they are to long for. The experiences you anticipate the most end up being letdowns, when instead it's the ordinary moments — maybe even the hard moments, the painful moments — that stand out, that become cherished memories.

Today's scripture readings equate wisdom and fullness with an acceptance of something that makes no sense, that defies scientific explanation, cultural norms, and even common sense: the Real Presence of our God in the Eucharist.

Is it strange to believe that we are consuming the Body and Blood of Christ in our worship and that only by doing so will we ever achieve everlasting life?

Perhaps. But we are asked to do many strange things as Christians. We are asked to love when we do not feel like loving, when the object of that love has not earned it. We are asked to forgive even when the recipient of that forgiveness does not seek it or merit it. We are asked to believe in moments when belief feels impossible.

Socrates says that the only wisdom is in knowing that you know nothing. Perhaps the only spiritual fullness is in knowing that there is only emptiness to be had here in this world, that there is no physical experience or indulgence that can really make you feel satisfied and strong. That the only food that really nourishes you in a way that lasts is a small white Host you can barely taste on your tongue.

"My flesh is true food, and my blood is true drink." - John 6:55

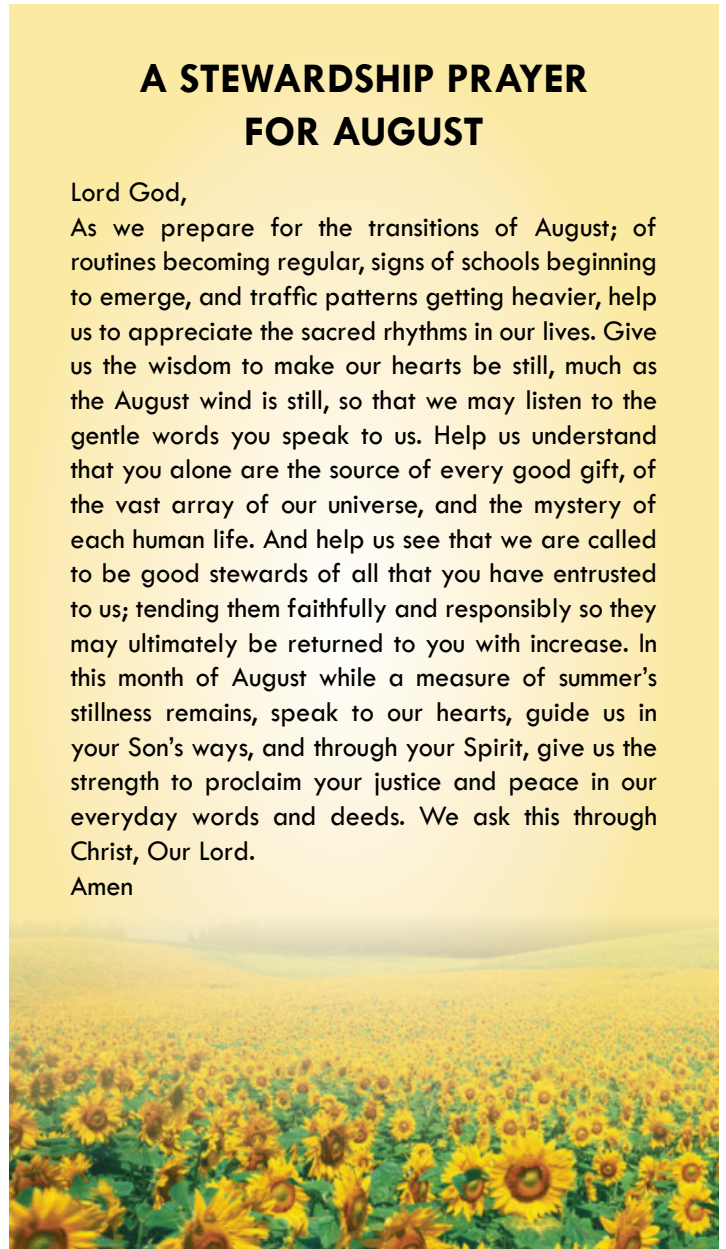
©LPi

A STEWARDSHIP PRAYER FOR AUGUST

Lord God,

As we prepare for the transitions of August; of routines becoming regular, signs of schools beginning to emerge, and traffic patterns getting heavier, help us to appreciate the sacred rhythms in our lives. Give us the wisdom to make our hearts be still, much as the August wind is still, so that we may listen to the gentle words you speak to us. Help us understand that you alone are the source of every good gift, of the vast array of our universe, and the mystery of each human life. And help us see that we are called to be good stewards of all that you have entrusted to us; tending them faithfully and responsibly so they may ultimately be returned to you with increase. In this month of August while a measure of summer's stillness remains, speak to our hearts, guide us in your Son's ways, and through your Spirit, give us the strength to proclaim your justice and peace in our everyday words and deeds. We ask this through Christ, Our Lord.

Amen



MUSIC Ministry

JOIN OUR MUSIC MINISTRY!

Has God graced you with the gift of music? We hope you will consider sharing it with your parish family. We are currently welcoming new singers to serve as Cantors and Psalmists at Mass. A Cantor leads most of the songs for Mass, while a Psalmist leads the psalm from the ambo. All singers are supported in their ministry by the use of recordings, music pdf's, and private coaching sessions. Please reach out to Peg Kasun (pkasun@stcharleshartland.org) or Aaron Mathews (amathews@stcharleshartland.org) for more information.



ANNUAL CHILDREN'S CHOIR CAMP!

All students in grades 3-8 are invited to join us for our annual Choir Camp. This will take place on Monday, August 26 from 9:30am to noon. We begin with registration in the new church corridor, then we will play warm-up games and learn proper singing technique, proper microphone usage, and the music for our upcoming school Mass. This is a great opportunity for your child to grow in confidence, leadership, musical skills, and most of all in their Catholic faith! The morning ends with ice cream in the corridor of the new church, then St. Charles students can proceed to the school's Meet and Greet. For more information, contact Peg Kasun (pkasun@stcharleshartland.org).

BULLETIN DUE DATES!

If you have an event you would like to publicize in the **September 8th bulletin** please submit information by **Wednesday, Aug. 28th**. This earlier deadline is due to Labor Day. Also, all articles must be submitted by 8:00 am on the due date. Thank you!



SAFE ENVIRONMENT TRAINING

Are you interested in volunteering in our school or in one of our youth discipleship programs this year? All volunteers must complete Safe Environment Training through the Archdiocese of Milwaukee prior to signing up. We will be hosting a training session here **at St. Charles on Wednesday, August 21 at 6pm**. You are also welcome to complete training at a different parish. Please visit the Archdiocese of Milwaukee's website at www.archmil.org/Offices/Safe-Environment.htm for more information and to sign up.



TEACHING SUBS NEEDED

St. Charles Parish School is in need of substitute teachers! Candidates must complete Safe Environment training through the Archdiocese of Milwaukee, and they must also have a bachelor's degree and a valid teaching license and/or a substitute teaching license. The process of acquiring a substitute teaching license is easy. Please contact the School Office at 262-367-2040 if you are interested!



THANK YOU TO THE HOSPITALITY TEAM

Wendy Crisci, Mary Jo Romportl and Mary Jo Downing hosted a thank you luncheon for our St. Charles Hospitality team at Lake Nagawicka Shores. There was great food, relaxation and fellowship! We are blessed with such a hard working and committed team! If you would like to join the Hospitality Team, please contact Mary Jo Romportl at mjromportl@stcharleshartland.org.



ADORATION UPDATES

As we continue to work toward filling our open Adoration hours and due to not having enough committed weekend Adorers, Adoration hours will be moving to a 'weekday only' schedule of 5 a.m. on Mondays through midnight on Friday evenings starting on Friday, August 16 at midnight. We are seeking out a second permanent adorer for each of the following hours: Mondays at 6 a.m. and 1 p.m.; Tuesdays at 1 a.m., 3 a.m., 4 p.m., and 5 p.m.; Wednesdays at 2 a.m. and 4 a.m.; Thursdays at 1 a.m., 5 a.m., and 3 p.m.; and Fridays at 12 a.m. and 6 p.m. To help fill these spots, we ask current and newly-interested adorers to consider attending an **Adoration meeting in the Church at 6 p.m. on Tuesday, August 20 or 9:30 a.m. on Wednesday, August 21** to ask questions, raise concerns, and receive training on the We Adore Him app and our substitute Adorer process.



NEW CHURCH UPDATES!

Hearing Assistance Devices: Parishioners with hearing issues will be able to use Hearing Assistance Devices to help them hear better at Mass. Parishioners can connect using ear buds, air pods, or hearing aids. See one of our ushers before Mass for assistance, and they will be happy to help you. You can also visit the website 'News Story' to get instructions for using your own device.



FALL FEST

ST. CHARLES PARISH

FROM SEPTEMBER 6-8!

For more information see the website and bulletin insert!

ZEAL

FOR THE

LORD'S HOUSE

22ND ANNUAL SEMINARY DINNER



Very Reverend Luke N. Strand
invites you to join the seminarians and faculty of
SAINT FRANCIS DE SALES SEMINARY
for a powerful evening of hope.

FRIDAY, OCTOBER 4, 2024
5:45 p.m. Cocktail Reception | 7 p.m. Dinner

BAIRD CENTER
New fourth-floor ballroom
405 West Kilbourn Avenue | Milwaukee

For information, visit sfs.edu/AnnualDinner or call 414-747-6463

Register today! Seats are going fast!
When registering, enter parish - **St. Charles Hartland.**



STAFF UPDATE

We would like to make you aware that Deacon Jon Gabik is no longer at St. Charles. We thank him for his service to our parish over the last year and a half and wish him well. All operational functions handled by Deacon Jon are now covered by the parish staff. If you have any questions regarding the operations of the parish, including giving, please contact the Parish Office at 262-367-0800.

CHARLES
Christian Women
SERVE • INSPIRE • SUPPORT • ENCOURAGE

ALL WOMEN OF THE PARISH

St. Charles Christian Women invites ALL WOMEN OF THE PARISH to mark their calendars & **SAVE THE DATE** for this year's events. Previously known as "Young at Heart," this group offers faith formation, fellowship and fun for ladies of all ages.

- Thursday, Oct 3rd (10am - 2pm) - Ebert's Village Outing
- Thursday, December 12th (12-2pm) - Advent/Christmas Banquet @ Schoenstatt Retreat Center
- Friday, February 21st or 28th (9:30am-12:30pm) - Pre-Lenten Day of Reflection (watch future bulletins for date confirmation)
- Thursday, May 22nd (11:30am-2pm) - Spring Banquet at the Golden Mast

Watch the bulletin and website for more details as these dates approach. Hope to see you there!



ST. CHARLES YOUNG COUPLES EVENT

Wednesday, September 11th from 6:30pm-8pm

St. Francis Hall at the Catholic Ecology Center, Neosho, WI

All young couples of the parish are invited to encounter God in the beautiful Wisconsin countryside while strengthening their relationship with their spouse. We will be answering any and all questions about the Sacrament of Marriage at this **"Saints and S'mores"** event! Use the QR code above to register and ask an anonymous question about marriage prior to the event. Nothing is off limits! Light refreshments will be offered and smores will be made. Feel free to arrive early to walk the grounds of the beautiful Catholic Ecology Center.

DISCIPLESHIP IN OUR PARISHES

We're still in the grip of a hot and sunny summer, but August brings a wake-up call. By August's end, visiting relatives have gone home, schools will be open, swimming pools will be closed, and college kids have packed up and left for the halls of academia. What's all that mean for discipleship, stewardship and parish life?



August is a perfect time to reflect on where – not “if” – you are called.

The parish is where the Church lives, and its committed disciples are the lifeblood of a thriving parish. In the parish, we find community and support, liturgy and ritual, sacraments and healing. In the parish, we find a way to give and a way to receive. On a practical level, Fall is the time when parish planning gears up for the seasons ahead. Now is the time to prayerfully consider your own involvement in the life of the parish in the coming year. How might we serve – and be served? The committed Catholic knows participation in the parish is a win-win situation, feeding us as we feed others.

Where do you begin looking for new inspiration? Visit our parish website for a list of ministry opportunities. What calls to you? Respond to your deep desire. Maybe you're the party planner who'd love to serve on the hospitality committee. Or perhaps you have a heart for helping the bereaved. Are you called to lector, or perhaps to take the Eucharist to the homebound? Maybe this is the year you need to soak in the fruits of being in a Small Group. Possibly you see a ministry missing and want to propose it. Perhaps, as a long-serving member of the parish, you want to be part of revitalizing the stewardship efforts of your parish.

August is a perfect time to reflect on where – not “if” – you are called. August provides time to decompress from a busy, fun summer and pray about where your own road to discipleship leads you next.

International Catholic Stewardship Council | August 2023 • e-Bulletin



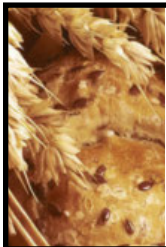
REMEMBER YOUR SCRIP FOR SCHOOL SUPPLIES!

Remember to use Scrip for your Back-to-School needs! Remember, when you buy products with Scrip gift cards, you support our Parish and School! You can order gift cards through their website @ www.raiseright.com and have them sent to St. Charles' Parish Office to pick up. You are also able to fill out the paper order form at the Parish Office to place your order or purchase Scrip in stock. Thank you for supporting St. Charles!



CHARITIES WEEKEND THANK YOU

A heartfelt thank you to everyone who stopped by at our recent Charities Weekend! Your support for these important missions is invaluable. A special shoutout to Sr. Miriam James Heidland, SOLT, who took the time to chat with and encourage our missionaries. Please see our website for information on how you can support these ministries.



REMINDER: THE AUGUST LAKE COUNTRY BREAD OF LIFE COMMUNITY MEAL AT ST. CHARLES IS CANCELED DUE TO RENOVATIONS. RETURNING SEPTEMBER 26TH!

Bulletin Advertisers of the Week
Please support our advertisers!

<p>DON CULL EXCAVATING W298 N9248 Center Oak Rd Septic & Mound Systems Grading 262-966-7038 MPRS 221589</p>	<p>FALBO PIZZERIA Carry Out ~ Delivery ~ Catering 262-367-2700 FalboPizza.com Pizzas • Subs • Salads • Appetizers Located on 418 Merton Avenue off Hwy 16 in Hartland</p>
---	--

ST. VINCENT de PAUL SOCIETY



PANTRY NEEDS: Single Toothbrushes, Boxed White Rice, Saltine Crackers, Ragu Spaghetti Sauce (variety of flavors), Cleaning Supplies

In today's Gospel on the Twentieth Sunday in Ordinary Time, Jesus tells us that "Whoever eats my flesh and drinks my blood remains in me and I in him." Just as our bodies need food, our souls need the sustenance that comes from the Eucharist. As we know, our loving God cannot be seen by our eyes but can be experienced through loving people.

In the month of July, we had a record number of 106 families that came to the St. Charles SVDP Food Pantry. The SVDP Food Pantry is located at 229 Lawn Street, Hartland and it is open Tuesday mornings between 10am and noon. It is also open on the second and fourth Tuesday evenings of the month between 5:30pm and 7pm. If you are in need of assistance or know of someone in need, please contact us at 262-367-0800.

EVERYDAY STEWARDSHIP

We can easily feel obligated to attend a party, wedding, or other event that we find ourselves invited to as a guest. If we want to go, then we get dressed up and rush off with anticipation of fun and good times with friends. If we dread going, we get ourselves together slowly and arrive late, hoping that the event will not be so long and we can then get on with the rest of our day. The difference in our feelings may have to do with many aspects: the host, the attendees, the reason for celebration, or even the venue. Either way, the invitation has been given to us because someone feels that our presence would make a positive difference. Our response is entirely our own. We decide how we will answer the invitation.

Every Sunday, every day in fact, you and I have received an invitation to a banquet more celebratory and grander than any wedding or birthday party. The host is actually Jesus Christ himself, and he has prepared a feast that promises to satisfy. He has prepared for this event by giving all he has to give. No host has ever been more gracious. His hope is that you will be happy to attend, for your presence does make a tremendous difference. Would he invite you if attending made no difference at all? Will you RSVP with a sense of joy and anticipation? If this is just another invite that obligates you and you approach the event with indifference, the host wonders if you really comprehend what he went through to make this meal possible. He also wonders if you really understand what is truly being celebrated.

– Tracy Earl Welliver, MTS ©LPi



2024 PRO-LIFE GALA



Come out to Pro-Life Wisconsin's 2024 Love for Life Gala at the Brookfield Conference Center on Saturday, September 14th to help raise funds to protect all human life! The gala will feature keynote speaker Seth Dillon, CEO of the Babylon Bee. Doors open

at 5:00pm, cocktail hour with open bar, games, and raffle from 5:30-6:30pm, and 6:30pm dinner program followed by live auction and keynote. **Register by Monday, August 26th** at ProLifeWI.org/gala or call our office at 262-796-1111.



All Are Welcome

Celebrating God's global mission through scripture, music, song and dance on World Mission Sunday.

Featuring
Fr. Michael Wolfe
Keynote Speaker
Rosalita Villa
Sacred Movement Leader
Tai Words Nabors
Sacred Movement Leader
& Dr. Aaron Mathews

2 PM | October 20, 2024
St. Martin de Porres Catholic Church
128 W Burleigh St.
Milwaukee, WI 53212



tinyurl.com/allarewelcome24

Pre-event registration closes
October 15, 2024.
Day of registrations are
welcomed.

There is no registration fee, but free will donations are welcome to offset our costs and provide for future programming!

Contact Lucca Kenyon, Events & Communications Coordinator
414-758-2280 | kenyonl@archmil.org

RAISING Saints
IN THE MODERN WORLD

PARENTS & GRANDPARENTS!

Join us for an inspiring evening with the Dominican Sisters of St. Cecelia as they share their personal experiences of family and parish life to teach us ways to pray as a family. Whether you're new to family prayer or already have a deep spiritual life, this event will guide you in bringing your children and grandchildren closer to God.

Free, and no registration is required - bring a friend!

<p>MONDAY, SEPTEMBER 16 6:30-8:30 p.m. St. Mary Parish 9520 W. Forest Home Ave., Hales Corners</p>	<p>THURSDAY, SEPTEMBER 19 6:30-8:30 p.m. Lumen Christi Catholic Church 2750 W. Mequon Road, Mequon</p>
---	---

ARCHDIOCESE of MILWAUKEE

Saturday, September 7, 2024

EUCCHARISTIC ROSARY PROCESSION AND MASS AT HOLY HILL

Location: Holy Hill Lower Stations of the Cross
Bishop Donald J. Hying of Madison Diocese will lead the Procession and preside at 11am Mass

Registration: 8:00 - 9:30 am
Reconciliation: 8:00 - 9:30 am
Free Pancake Breakfast served: 8:00 - 9:30 am (Courtesy of the Knights of Columbus)
Kiddie Run (12 & under): 9:30 am (Refreshments available throughout the event)
Eucharistic Rosary Procession: 9:45 am
Benediction: 10:45 - 10:55 am
Mass: 11:00 am in the Basilica with Bishop Hying

Presented by: **Men and Women of Christ**

Sign up on www.active.com
All details are on menofchrist.net
Questions? Contact Tim Dunne at tdholyhill@gmail.com

Ground Crew Service

Full Service Landscape Management

262.821.9680

www.groundcrewservice.com

Hartland Terrace
Assisted Living

- RN Lead 24-Hour Elite Care Team
- Full Continuum of Care • Memory Care
- All Inclusive Pricing • Private Studios
- Family Centered Care Model

327 North Avenue • Hartland | 262-369-4391
www.hartlandterrace.com

TODD WANGERIN
ELECTRIC, Inc.

Free Estimates - Licensed - Insured
Over 20 years experience

Todd Wangerin 262-719-4411
twelectric4411@att.net

R&R Rick Kalscheuer
Parish Member
MyKnowledgeBroker.com
800.566.7007

INSURANCE **we know.**

Holzhauser, Hewett & Barta s.c.
Orthodontic Care For Children And Adults

Daniel Holzhauser DDS MS | Charles Hewett DDS MS | Joshua Barta DDS MS | Benjamin Schneider DDS MS

520 Hartbrook Dr., Hartland 262-367-7076
2090 Continental Dr., West Bend 262-306-0600
10225 W. Capitol Dr., Wauwatosa 414-463-5700

www.hhortho.com

IF YOU LIVE ALONE

MDMedAlert!™ As Low As **\$19⁹⁵** mo.

- ✓ Ambulance/Police **CALL NOW!**
- ✓ Family/Friends (262) 367-7424
- ✓ GPS & Fall Alert **800.808.9294** md-medalert.com

FREE AD DESIGN
with purchase of this space

CALL 800-950-9952

Join our Team!

Serve your local Catholic Community, become an agent with the Knights of Columbus!

Contact us at www.kofcwi.org

Life Insurance • Disability Income Insurance
Long Term Insurance • Retirement Annuities

Tim J. Nowak, FICF
General Agent
(920) 810-6188
timothy.nowak@kofc.org

Knights of Columbus
General Agent License MDK7

KOWAL INVESTMENT GROUP
The Retirement Specialists

Aaron T. Kowal, CFP®
W238N1660 Busse Rd., Ste. 100, Waukesha, WI 53188
262-522-4040
www.kowalinvestmentgroup.com

Call us to schedule your free, no obligation, financial check-up today.

Kowal Investment Group, LLC ("Kowal") is a Registered Investment Advisor ("RIA"), with the U.S. Securities and Exchange Commission ("SEC"). Kowal provides investment advisory and related services for clients in State of Wisconsin and other states.

BUNZEL'S OLD FASHIONED MEAT MARKET

Fresh Custom Cut Choice Meats
Party Trays • Catering

Thank You For Supporting A Family Tradition
9015 W. BURLEIGH 873-7960
www.bunzelmeats.com

Carrier
Turn to the experts

Pat's Heating & Air Conditioning
262-567-7499
OCONOMOWOC
www.patsheating.com

Hartland Family CHIROPRACTIC

211 Cottonwood Ave, Hartland
(262) 367-7424
www.hartlandchiro.com

Dr. Hans Halaska

FOOT & ANKLE
Associates of Wisconsin
Parish Member
Dr. Amy Galati

Call: (262) 542-3779
www.footandanklewi.com

AMERICAN LEGION POST 294
231 Goodwin Ave.

Remember **VETERANS DAY**, Nov. 11th.
Fly the Flag - Ceremonies at Post 10:30 AM

Culver's
701 Industrial Ct., Hartland
262-367-5800

TOWN BANK
AWINTRUST COMMUNITY BANK

800-433-3076
www.townbank.us

Palmer's STEAKHOUSE

www.Palmerssteakhouse.com
122 E. Capitol Dr. • Hartland, WI
262-369-3939

Flanagan-Dorn Post 294 of the American Legion also wishes all Vets and Members of St. Charles a **Very Happy Thanksgiving & the Merriest of Christmases**. Please remember those who currently are serving, won't you?

See us @ wilegion.org
414-975-5951 or 262-549-6463

CHARLES
St. Charles School... We choose Christ in learning, living, & values in the light of our faith.
262-367-2040
www.stcharlesschoolhartland.com

VISU-SEWER, INC.
262-695-2340

Professional Sewer Inspection, Maintenance and Rehabilitation Services

Parish Members
www.visu-sewer.com

FALBO
Carry Out ~ Delivery ~ Catering
262-367-2700 | FalboPizza.com
Pizzas • Subs • Salads • Appetizers
Located on 418 Merton Avenue off Hwy 16 in Hartland

JENSON MOTORS
Auto - Truck Repair

Hours: Mon-Fri 7:30-5:30
Proprietor: Guy Jenson
262-367-5556
364 Cottonwood Ave., Hartland, WI

Compliments of:
Boehme & Taylor, CPAs

LAKESIDE BADGERLAND INTERNATIONAL TRUCKS **IDEALEASE** Bill Reilly, Jr. Parish Member

Offering Wisconsin businesses transportation solutions nearly 40 years.

- Truck Sales
- Parts
- Service
- Body Shop
- Leasing & Rental

SERVING: Milwaukee • Madison • Racine
West Bend • Sheboygan • Janesville • Monroe • Rockford

EVERT-LUKO FUNERAL HOME
& CREMATION SERVICES

Guiding with skillful hands and soulful hearts

262-367-2156
www.evertlukofuneralhome.com

PROMACH Performance. Packaged.

CL&D **\$2,000 RETENTION BONUS IN THE FIRST YEAR!**
\$20+/HOUR
aldgraphics.com/careers

KLINK'S KARPETS, INC
Hartland's Floor Covering Center
Family Owned & Operated for over 47 Years

Carpeting & Hard Surfaces
107 North Ave. Hartland, WI
367-4670 Parish Member

We help real estate investors invest in passive assets and defer tax.
If you are planning on selling your investment property, let's talk.

Broaching Technologies
Machines - Tooling - Subcontracting

Blind and Thru Hole: www.keyway-spline-broaching.com
Broaching, Splining, Keyseating, P (262) 820-1200
Slotting, Shaping sales@broachingtech.com

DAVE PERRY
heating • cooling

Proudly Serving the Lake Country Area for more than 20 years

Heating • Air Conditioning • Geothermal
New Construction • Replacement
262.966.1959
www.daveperryheatingandcooling.com

BRANDON BRUCKMAN
414-882-8738
www.investwithinsight.com

INSIGHT INVESTMENT ADVISORS

CMC
CUSTOM MADE CARPENTRY

For All Your Remodeling Needs!
KITCHEN & BATH REMODELING
COMPLETE HANDYMAN SERVICES

JIM FISCHER
fischerjames29@gmail.com
414-614-7329

Generations DENTAL

Jim Muenzenberger, D.D.S.
and Kelly Newman, D.D.S.
Parish Members

139 E. Capitol Dr.
Hartland, WI 53009
Office 262-367-2750

Sprung Heating & Pump Service LLC

HVAC • PLUMBING • WELL PUMPS • GENERATORS

PO BOX 3024 • MERTON, WI 53056
262-538-1400
www.sprungheating.com

Lake Country Eye Care

580 Hartbrook Dr. • Hartland, WI
Amber A. Dentz, OD - Parishioner
www.lakecountryeyecare.com
262-367-6610

Helping you achieve financial dreams



James Dunn
Managing Director – Financial Advisor
(262) 395-1101
www.dunninvestmentmanagement.com



Lake Five

LANDSCAPE SUPPLY LLC

Mulch • Firewood • Nursery

262-777-1523

W275N7813 Lake Five Rd Hartland, WI

LakeFiveSupply.com



Good Morning Store

Mattress & Furniture Store

600 Hartbrook Dr, Hartland

Parish Member



Brenna Fischer

Hairstylist

262-844-5934

601 Ryan St., Ste 302

PEWAUKEE WI

brennafischer.glossgenius.com

REICHL & KOLSTAD
ORTHODONTICS



Dr. Peter Reichl &
Dr. James Kolstad
look forward to
meeting you!

Offering Traditional Braces & Invisalign

Located in Waukesha,
Mukwonago & Hartland

262-547-2827

www.ReichlKolstadOrtho.com

WISE

DESIGN BUILDERS

262-790-4444

Parish Members

www.wisedesignbuilders.com



Lake Country Remodeling Specialist



CARPET PLUS, INC.

We Bring the Showroom to You!

(414) 573-0105

Proudly Serving Crusader Nation for over 25 years!

Dan Taylor, Parish Member



COURI
INSURANCE
AGENCY

Protection for the Unexpected™

Coverages

IMPORTANT

Pricing

IMPORTANT

Low Costs

GREAT COVERAGES

Jerry & Judie Couri

262-548-8077 • couri.com

DON CULL EXCAVATING

W298 N9248 Center Oak Rd

Septic & Mound Systems Grading

966-7038

MPRS 221589



Angela Isherwood
Owner &
Luxury Travel Designer
Parishioner
262.229.9271
Angela@OliveAndAtlasTravel.com

www.OliveAndAtlasTravel.com

SUPPORT OUR
ADVERTISERS!

PASTERNAK & ZIRGIBEL SC

FRANK PASTERNAK, PARISH MEMBER

BEST LAWYERS IN AMERICA

TOP 50 WISCONSIN SUPER LAWYERS

BEST LAW FIRMS U.S. NEWS & WORLD REPORT

(262) 785-0802 injurywisconsin.com



OFFICE FURNITURE WAREHOUSE®

New & Preowned Office Furniture

Design, Delivery, Installation, & Liquidation Services

Elijah Walters (262)719-8621

ofwgo.com

The GOOD DENTIST

Dr. Marta Ostromecki, DDS Parishioner

(262) 223-3169

www.tgdentist.com

Always Accepting New Patients

N67W28025 Sussex Rd., Suite 100, Hartland, WI



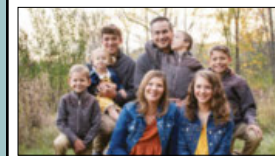
PAUN Construction
Specializing in Masonry
Residential & Commercial
W300 N7741 Christine Ln., Hartland, WI 53029
Robert J. Paun (262) 326-8043
www.paunconstruction.com
mail@paunconstruction.com

CITGO
Station Hartland
Offering a variety of Pernat
and Leroy Meats products
Walk-in Beer cave
301 E. Capitol Dr Hartland WI
Mon-Sat: 5AM-10PM Sun: 6AM-9PM
Stop in and ask about our Loyalty Program

PLM
PAVING AND CONCRETE
Parking Lot Maintenance, Inc.
262.691.3964 www.plmpaving.com

What Will Be Your Legacy?

If you value your faith and your family, I welcome the opportunity to share my faith-based perspective in union with my financial experience in order to co-create a personal legacy strategy. I can assist with: Portfolio Management | Retirement Planning | Financial & Legacy Strategies | Special Needs Planning



Kurt Maltby, CFP®, ChSNC®
CERTIFIED FINANCIAL PLANNER™
Assistant Vice President, Financial Advisor

Morgan Stanley

20975 Swenson Drive, Waukesha

Phone: (262) 523-8303 | NMLS # 1504808

advisor.morganstanley.com/the-riverwood-wealth-management-group

Morgan Stanley and its Financial Advisors do not provide tax or legal advice. Individuals should seek advice based on their particular circumstances from an independent tax advisor. Morgan Stanley Smith Barney LLC. Member SIPC. CRC#18748 08/18

Please Support these
CONTRACTORS

Thank You to these contractors
helping St Charles grow!



NELCO ELECTRIC, INC.
GERMANTOWN, WI
Commercial • Industrial • Residential
24 Hour Service 262-502-9950
WWW.NELCOELECTRIC.COM
Barb Jarchow Parishioner

DFI MASINI, INC.
CONTRACTORS
262 / 820-8300
WHEN YOU EXPECT THE BEST.

Wolf Electric LLC
Commercial, Industrial, Residential
Garrett Wolf • Master Electrician/Parishioner
Commercial • Industrial • Residential
(414) 899-3608 • www.wolfelectricllc.com

SCOTT HEYERDAHL
Realtor®/Broker
• Home & Condo Sales
• Notary Public Services
262-719-6970
FIRST WEBER REALTOR
scottHeyerdahl.firstweber.com

FRONTIER
TITLE & CLOSING SERVICES
1130 James Drive, Hartland, WI 53029
Office: 262-361-4466 Fax: 262-361-4462
www.frontiertitlellc.com
Frontier Title & Closing Services, LLC
Lake Country's Most Experienced
Title & Closing Company
Specializing in Residential, Commercial
& New Construction Transactions
Serving the Real Estate Community!

Custom Asphalt Solutions Since 1941
WOLF PAVING
Parking Lots
Private Roads
Walking Paths
Athletic Courts
wolfpaving.com

zimmerman
ARCHITECTURAL STUDIOS, INC.
200 West Mt. Vernon Avenue
Milwaukee, WI 53212 | zimmerman.com
TELEPHONE (414) 475-9500
FAX/EMAIL (414) 475-9504

LET'S GROW YOUR BUSINESS
Place Your Ad Here and Support Our Parish!
CONTACT ME Jeff Tkachuk
jtkachuk@4LPi.com • (800) 950-9952 x2513



For ad info. call 1-800-950-9952 • www.4lpi.com

St. Charles Catholic Church, Hartland, WI

A 4C 01-0639