



At St. Charles, all are invited to
meet Christ, know Christ,
love Christ and serve Christ.

April 16, 2023
SUNDAY OF DIVINE MERCY



JOIN US FOR THE DIVINE MERCY SERVICE
AT ST. CHARLES PARISH
TODAY, APRIL 16TH AT 2:00 PM

Our Lord said to
Saint Faustina:

"Encourage souls to say the Chaplet which I have given you ... Whoever will recite it will receive great mercy at the hour of death ... When they say this chaplet in the presence of the dying, I will stand between my Father and the dying person, not as the Just Judge but as the Merciful Savior ... Priests will recommend it to sinners as their last hope of salvation. Even if there were a sinner most hardened, if he were to recite this chaplet only once, he would receive grace from my infinite mercy. I desire to grant unimaginable graces to those souls who trust in My mercy ... Through the Chaplet you will obtain everything, if what you ask for is compatible with My will."

Saint Maria Faustina Kowalska, a Polish nun from the early 20th century, became the great apostle of Divine Mercy. She was asked by Jesus to bear a message of grace and love.

St. Charles Parish & School | 313 Circle Drive, Hartland, WI 53029
262-367-0800 | www.stcharleshartland.com | email: parish@stcharleshartland.org



WELCOME TO ST. CHARLES - WE ARE HERE FOR YOU



PASTOR
Fr. Ken Omernick



ASSOCIATE PASTOR
Fr. Ariel Orozco

ST. CHARLES STAFF TEAMS

ASSOCIATE PASTOR & Becoming Fully Catholic:
Fr. Ariel Orozco, aorozco@stcharleshartland.org

TEACHING PARISH SEMINARIANS:
Deacon Robert Ross, rross@sfs.edu
David Sweeney, dsweeney@sfs.edu

SCHOOL TEAM 262-367-2040
Principal/School Team Lead: Dan Garvey, Ext. 208,
dgarvey@stcharleshartland.org
Advancement Officer: Allison Caswell, Ext. 227,
acaswell@stcharleshartland.org
School Administrative: Lisa Moehrke, Ext. 206,
school@stcharleshartland.com
School Administrative: Karen Dejewski, Ext. 206,
school@stcharleshartland.com
School Administrative: Mary Jo Shapiro, Ext. 206,
school@stcharleshartland.com

WORSHIP TEAM
Worship Lead: Peg Kasun, Ext. 225,
pkasun@stcharleshartland.org
Liturgist: Elizabeth Thompson, M.Div., 262-367-6704
ethompson@stcharleshartland.org
Music Director: Dr. Aaron Mathews, Ext. 225,
amathews@stcharleshartland.org
Wedding Coordinator: Dee Anne Hamer, Ext. 215,
dhamer@stcharleshartland.org

DISCIPLESHIP TEAM
Discipleship Team Lead: Marianne Giovingo, Ext. 220,
mgiovingo@stcharleshartland.org
Adult Small Groups: Maria Notch, Ext. 220,
mnotch@stcharleshartland.org
Children's Discipleship Co-Lead: Shelly Buchan, Ext. 205,
sbuchan@stcharleshartland.org
Children's Discipleship Co-Lead: Alicia Van Hecke, Ext. 205,
avanhecke@stcharleshartland.org
Student Discipleship Lead: Nick Scanlan, Ext. 209,
nscanlan@stcharleshartland.org
Student Discipleship Co-lead: Rachel Heffron, Ext. 221,
rheffron@stcharleshartland.org
Baptism Coordinator: Mary Jo Romportl, Ext. 202,
mjromportl@stcharleshartland.org

OPERATIONS TEAM

Operations Manager/Team Lead: Deacon Jon Gabik,
Ext. 201, jgabik@stcharleshartland.org
Facilities Manager: Mike Cattani, Ext. 210,
mcattani@stcharleshartland.org
Maintenance Manager: Tim Orzechowski, Ext. 217,
torzechowski@stcharleshartland.org
Accounting: Dee Anne Hamer, Ext. 215,
dhamer@stcharleshartland.org
Cornerstone/Safeguarding: Karen Dejewski,
cornerstoneproject@stcharleshartland.org

COMMUNICATIONS & STEWARDSHIP TEAM

Communications & Stewardship Team Lead: Allison Caswell,
Ext. 227, acaswell@stcharleshartland.org
Assistant to the Pastor: Terrie Carew, Ext. 224,
tcarew@stcharleshartland.org
Graphic Design Specialist: Renee Krier, Ext. 224,
rkrier@stcharleshartland.org
Administrative: Kathy Gillstrom, Ext. 200,
kgillstrom@stcharleshartland.org
Administrative: Mary Jo Romportl, Ext. 200,
mjromportl@stcharleshartland.org

PARISH OFFICE: 262-367-0800,
Mon. - Fri., 8 am - 4 pm

EMAIL US: parish@stcharleshartland.org

PARISH SCHOOL: 262-367-2040,
school@stcharleshartland.org



WEBSITE & LIVESTREAM: www.stcharleshartland.com
or scan QR code with phone camera

WELCOME TO ST. CHARLES - WE ARE HERE FOR YOU

SATURDAY MASS OF ANTICIPATION: 5:00pm

SUNDAY MASS TIMES: 7:00am, 9:00am, 11:00am & 6:00pm

WEEKDAY MASS: Monday - Friday: 8:30am & Saturday: 8:30am

TUESDAY TRADITIONAL MASS

Monthly on the fourth Tuesday at 5:30 pm

EUCCHARISTIC ADORATION

Monday & Tuesday: 2:00pm – 9:00pm

Wednesday: 7:00 – 8:20am and 9:00am – 3:00pm

Thursday: 7:00 – 8:20am

Friday: 9:00am – 6:00pm

RECONCILIATION

Saturdays: 3:30pm - 4:30pm & Thursdays: 5:00pm - 6:00pm

SACRAMENT OF THE SICK

By appointment with Fr. Ken or Fr. Ariel (schedule by calling the Parish Office).

ANOINTING MASSES: 2nd & 4th Fridays every month at 8:30 am

WE ARE HERE TO HELP YOU WITH:

- JOINING OUR PARISH
- PLANNING A WEDDING
- PLANNING A FUNERAL
- PLANNING A BAPTISM
- BECOMING FULLY CATHOLIC
- JOINING A SMALL GROUP
- CHILD FORMATION

For help with any of these areas please contact the Parish Office at 262-367-0800 or parish@stcharleshartland.org.

OUTREACH SERVICES TEAM: Terri Blazek: 262-367-7608, tterriblazek@wi.rr.com

TO ASK FOR PRAYERS or to be added to the email list, please email: prayernetwork@stcharleshartland.org

FOR EMERGENCY PRAYERS, please email: emergencyprayers@stcharleshartland.org

Printed weekly prayer sheets are available on the information wall.

ST. VINCENT DE PAUL: if you need food, shelter or assistance call 262-367-0800 (Parish Office)

NEED HOME COMMUNION:

For information call 262-367-0800 (Parish Office)

Bulletin Advertisers of the Week

Please support our advertisers!



KOWAL | INVESTMENT GROUP

> The Retirement Specialists

Aaron T. Kowal, CFP®

W238N1660 Busse Rd., Ste. 100, Waukesha, WI 53188
262-522-4040

www.kowalinvestmentgroup.com

Call us to schedule your free, no obligation, financial check-up today.

Securities offered through Raymond James Financial Services Inc. Member FINRA and SIPC. Investment Advisory Services offered through Raymond James Financial Services Advisors, Inc. and Kowal Investment Group, LLC. Kowal Investment Group, LLC is not a registered broker/dealer and is independent of Raymond James Financial Services.

Mass Intentions for the Week of April 16



Sunday, April 16 ~ Divine Mercy Sunday

7:00 am † Paul Jungbluth

9:00 am Living and Deceased Members of the Schultz & Enderlin Families

11:00 am Living and Deceased Members of St. Charles

6:00 pm Special Intention

Monday, April 17

8:30 am † David Doellingen

Tuesday, April 18

8:30 am † Barb Greenway

Wednesday, April 19

8:30 am † Kate Majewski

Thursday, April 20

8:30 am † James Klauser

Friday, April 21

8:30 am † Rufus Mathews

Saturday, April 22

8:30 am † Gerald Roche

5:00 pm † Edward & Eunice Gordon

Sunday, April 23

7:00 am † Katelin Condon

9:00 am † Eli Hansen

11:00 am † Ron Czemierys

6:00 pm Living and Deceased Members of St. Charles

Please pray for the repose of the souls of

Vickie Vanevenhoven & Stan Wiliszewski

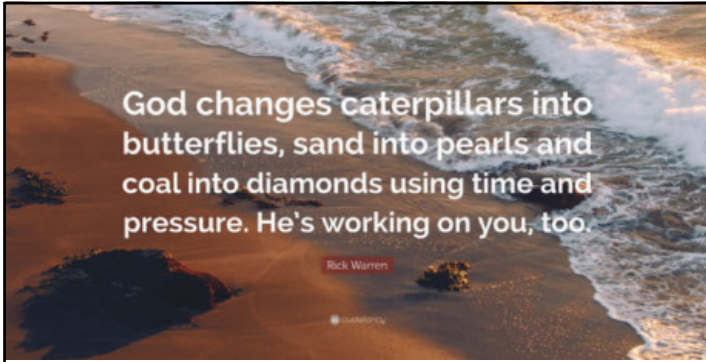
May their souls and the souls of all the faithfully departed
REST IN CHRIST'S PEACE.



Please pray for
DAVID SWEENEY
who will be ordained
to the Diaconate
on Saturday, April 22 at the
10:30 am Mass at the Cathedral
of St. John the Evangelist.

David will also have his Thanksgiving Mass at St. Charles on Sunday, April 23 at the 11:00 am Mass with reception to follow. All are welcome.

Please pray for all the seminarians being ordained to the Diaconate this year!



God changes caterpillars into butterflies, sand into pearls and coal into diamonds using time and pressure. He's working on you, too.

Rick Warren

THIS WEEKEND'S GOSPEL MEDITATION SUNDAY OF DIVINE MERCY

By Marianne Giovino
Discipleship Team Lead

“Give thanks to the LORD for he is good, his love is everlasting.”

Friends, there is so much richness in these readings, I am torn on how to even pick where to begin. I would encourage you to make a resolution this Easter to engage daily in the Word of God. Give God permission to speak truth into your life through seven minutes of communion and dialogue with the One who loves you and knows you. In His beautifully mysterious way, His Word is universal and at the same time intimate; be ready for Him to work in your life.

“Although you have not seen him you love him; even though you do not see him now yet believe in him, you rejoice with an indescribable and glorious joy, as you attain the goal of your faith, the salvation of your souls.” These words given to us in 1 Peter profoundly remind us of the gift of God’s Paschal Mystery (His Suffering, Death, Resurrection, and Ascension—soon to come) and thereby lead us deeper into the celebration of every Mass. As we genuflect toward our Beloved who has taken residence in the Tabernacle, may we approach the Altar of Sacrifice with a confidence that the same God who always remains in the structure of the building also remains in the Body—everyone we encounter.

The entire Mass, we are preparing to receive Our Savior into the tabernacles of our hearts. We are sent full of God’s Spirit to be His image in the world. Today as we celebrate Divine Mercy Sunday, let us receive the invitation (and challenge) to choose mercy over condemnation. This is hard! Often we react out of the place of our own woundedness rather than respond from a place of reason. We have just celebrated our redemption through Christ’s Sacrifice on the Cross, yet, we are a broken people and fall into choices of sin that hurt ourselves and others. God’s redemption still saves us even if we have fallen over and over again. Turn back to God frequently in the Sacrament of Reconciliation. He gave up His life for love of you, give Him the opportunity to show up for you as a God who forgives unceasingly!

PRAY WITH SCRIPTURE Lectio Divina

15 minutes each day spent in God's presence – reading, reflecting, responding and resting with his Word – adds up to 90 hours in one year. That is time well spent and a testimony to how a little at a time turns into something remarkable!

Sunday, April 23rd Readings

Sunday: Acts 2:14, 22-33/Ps 16:1-2, 5, 7-8, 9-10, 11 (11a)/1 Pt 1:17-21/Lk 24:13-35

To find readings for the weekdays and/or Feast Days, please visit <https://bible.usccb.org/bible/readings>.

Reflection questions for Sunday, April 23rd

- Peter’s first public speech in Jerusalem focuses on Jesus’ connection to King David. In other words, Peter spoke of God’s fidelity to Israel in Jesus’ resurrection from the dead. What would you like to know about Jesus’ Jewish roots?
- Peter encourages his community to “conduct yourselves with reverence during the time of your sojourning” (life on earth). How might you show respect to others this week?
- We hear how the two disciples on the road to Emmaus finally recognized the risen Jesus in the blessing and breaking of the bread. What helps you recognize the presence of Jesus in your life?

READ. REFLECT. RESPOND. REST.



Cut out and keep in your Bible for reference!



New, increased hours for your prayerful time with Jesus beginning Monday, April 17th

Eucharistic Adoration will take place on:
Monday & Tuesday: 2:00 PM – 9:00 PM
Wednesday: 7:00 – 8:20 AM and 9:00 AM – 3:00 PM
Thursday: 7:00 – 8:20 AM
Friday: 9:00 AM – 6:00 PM

We ask for TWO people to commit to adoring our Lord for every scheduled hour each day. Visit the website to sign up! All are invited to come and spend some quiet time in prayer in the presence of Our Lord.

NEW CHURCH TOURS



TOUR THE NEW CHURCH TODAY!

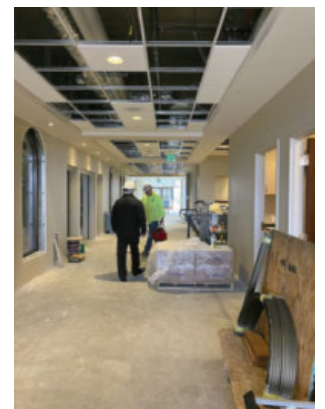
You too can be as happy as Dr. Aaron Mathews when you see the progress that has been made on the inside of our new church!

All parishioners are welcome to take a self-guided walking tour of the inside (first floor only) of the new church on **Sunday, April 16 after all morning Masses from 8 a.m. to 1 p.m.**

Parishioners will exit Mass, forming a line at the North East entrance. The line will be continuously moving so we can get as many people as possible inside. This tour will be a loop that will begin and end at the North East entrance. Signs will be posted identifying areas and rooms. Please wear comfortable, closed-toe walking shoes (no heels). No registration is required.

Parents with young children, please note that this is an active construction site. Some pathways may be narrow. We are looking at a viewing area for those with walkers, strollers, wheelchairs, and those who have difficulty walking.

*St. Charles
Hosford, WI
(Interior Rendering - Veris)
© 2014 Conrad Schmitt Studio*





Terrie Carew



Allison Caswell

STAFF UPDATE

Three years ago, St. Charles created the Communications & Stewardship Team, one of several staff teams, to help streamline processes in our parish and school. Terrie Carew, Fr. Ken's assistant, has spearheaded this team since its inception and has been instrumental in improving our communications both internally and to the parish as well as guiding the team through many exciting projects. She has truly shaped this staff group, and we are very grateful for her insights and dedication to getting this team off the ground!

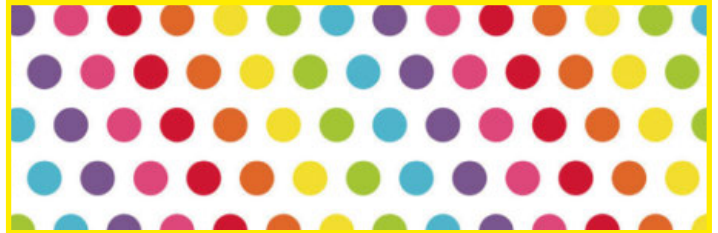
We are pleased to announce that Allison Caswell, our School's Advancement Officer and Communications Coordinator for the Parish, will be the new Communications & Stewardship Team Lead! Allison has been at St. Charles since August 2019 and has been working behind the scenes on our parish emails, social media, website, and other communications projects. Her master's degree in English and experience at St. Charles as well as her former role at Divine Savior Holy Angels High School makes her an excellent fit for this position. She is very excited to take on this new role and to continue increasing communications and stewardship opportunities in our parish and school!

Terrie is looking forward to this transition, which will allow her to fully embrace the growing needs in her continued role as Fr. Ken's assistant. She will also remain on the Communications & Stewardship Team and assist where needed.



Capuchin Bag THANK YOU!!!

Whether you participated in this year's Capuchin Hygiene Bag Drive by filling a bag or by offering your prayers, please know we are grateful for you! This year, our parish donated about 350 bags filled with hygiene products to support those in need in Milwaukee County. Thank you again for your prayers, fasting and almsgiving toward this project!



2023 VIP DAY

Friday, May 5 • 8:30am-11:45am

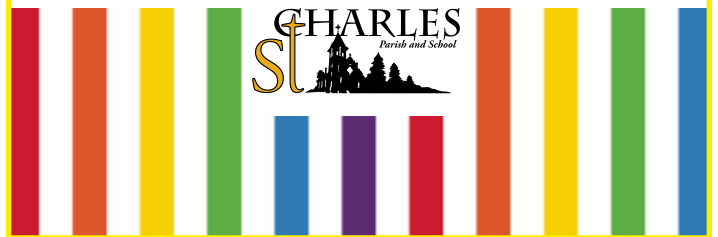
Join us for a special VIP day where St. Charles students celebrate grandparents and special friends.

Mass starts at 8:30am at St. Charles Catholic Church, and students will sit with their honored guests. Enjoy a light continental breakfast following Mass in the Borromeo Room.

Our guests are also welcome to visit classrooms, meet teachers, enjoy the 4th Grade Wisconsin Fair, look at wonderful artwork, and spend time with their special students.

Please RSVP at www.school.stcharleshartland.com!

526 Renson Road | Hartland, WI 53029



DO YOU ENJOY SHARING GOD'S LOVE? *Bring Communion to the Homebound*

There are many St. Charles parishioners who are homebound and unable to celebrate the Holy Eucharist with others each week at Mass. For many of these individuals, it is the hardest part about being homebound. We are looking for volunteers to bring the Holy Eucharist to our fellow parishioners in their homes. Do you enjoy sharing God's love? Please consider this most worthwhile ministry. For more information, please call Kerry Shannon at 262-696-4128 or call the Parish Office at 262-367-0800.

St. Charles needs your help!

Spring Cleanup Volunteers Needed!

(Individual or Groups)

Saturday, April 29th
from 8:00 am-11:00 am

Please bring rakes, shovels, and gloves.

What needs to be done:

Raking leaves and soil * Planting grass seed * Spreading mulch

If interested, please meet in the west parking lot at 8:00 am that morning. For more information please contact Mike Cattani at 262-367-0800 Ext. 210 or mcattani@stcharleshartland.org.

St. Charles 12th Annual

Garden Club Luncheon

Saturday, April 22, 2023
St. Charles Borromeo Room
Doors open at 10:00 am

Beckie Nelson will be our guest speaker at this year's luncheon. Her talk will be on "House Plants." She will give us inspiration and expert advice on how to keep our green and blooming house plants beautiful, healthy and thriving. A lunch of delicious salads, breads, desserts, and beverages will follow. Door prizes will be given at the end of the event.

The cost is \$25 and forms can be found on the parish information wall or website. **Please return the completed form and money to the parish office by Monday, April 17th.** For more information, please call 262-367-0800.

Grieving with Great HOPE

FIVE-WEEK GRIEF SUPPORT WORKSHOP AT ST. CHARLES

April 22, 29 and May 6, 13 & 20

Saturdays, 9:30 - 11:30 am in the Life Teen Cafe

Grieving with Great HOPE is a five-week grief support workshop using a video on-demand format offered by St. Charles Bereavement Ministry. It offers a prayerful, practical and personal approach for anyone who is mourning the loss of a loved one. If you have lost a spouse, a child (including pregnancy loss), a grandchild, a parent, another family member or a friend, you are encouraged to attend. Presenters will include two priests as well as John and Sandy O'Shaughnessy from Good Mourning Ministry, a Catholic bereavement organization.

If you would like to register for the workshop, visit the parish website and click on the NEWS story to find the online registration form.

For more information or questions, please contact Maria Notch at mnotch@stcharleshartland.org.

Young @ Heart

SAVE THE DATE FOR THE YOUNG @ HEART'S NEXT EVENT!

St. Charles Young @ Heart group invites you to join us in celebrating our one-year anniversary at the **Golden Mast Inn on Okauchee Lake, May 25, 2023.**

Cost is \$35 per person, featuring the Golden Mast famous terrace buffet - delicious variety for all tastes.

This event is an ideal opportunity to simply have meaningful time to spend enjoying the love of family and favorite friends. It is also a great time to meet those nice ladies we may often see each week in church but haven't learned their name. This invitation is open to all women of the parish and their guests.

We welcome you all and hope to see you there. The invitation cards with RSVP are available on the information wall in the hallway next to the church office. If you have questions, call Kathy Nawrocki at 262-727-7205.



ST. CHARLES DINING OUT!

**Endter's Sports Grill in Hartland
TODAY - April 16th from 4 pm to 10 pm**

Mention St. Charles and Endter's will donate \$5 for each large pizza or \$3 for each small pizza to St. Charles School. Offer good for dine in or carry out. For carry out call 262-369-0079. Remember to buy SCRIP for Endter's in the Parish Office and then spend it on April 16th.



PLEASE JOIN US FOR
ST. CHARLES PARISH & SCHOOL

Kentucky Derby Gala

Saturday, April 29, 2023

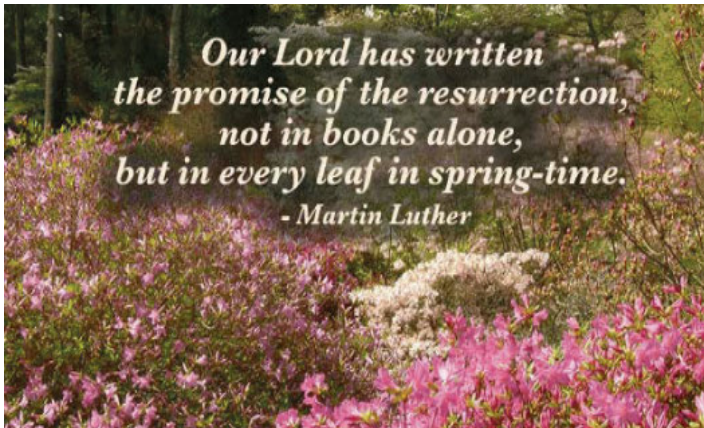
THE LEGENDS AT BRANDYBROOK

**Didn't get tickets for our upcoming Kentucky Derby Gala?
There are still ways to support the event!**

Join us virtually! Register on the Gala website to check out what silent auction items are available and to sign up for one of our buy-in parties. You don't want to miss out on some of our awesome packages this year!

Grand Raffle tickets are still available for your chance to win \$4,000 cash or tuition credit! Tickets are \$25 per ticket/\$100 for a set of five and are available in our Parish Office, cash or check only. Turn in tickets and money into the brown Drop Box located by the Parish Office entrance by Thursday, April 27.

We would also love your help throughout the event! This is a great way to support the Gala while meeting other members of our parish and school community. Visit the Gala website to check out what opportunities are available. We are very grateful for your assistance!



ST. VINCENT de PAUL SOCIETY



FOOD PANTRY NEEDS: Brown Sugar, Saltine Crackers, Canola & Vegetable Oil, Pancake Mix

In the Gospel of the Second Sunday of Easter, Jesus stands in the midst of us and says "Peace be with you." As you place your gifts into the St. Vincent de Paul Poor Box or donate food to the St. Charles SVDP Food Pantry you say "Peace be with you" to those who are in need. You are giving hope to your neighbors who seek the assistance of SVDP in order to feed, clothe and shelter their families. Thank you for generously supporting our ministry.

The St. Charles SVDP Food Pantry is located at 229 Lawn Street, Hartland. It is open Tuesday mornings between 10am and noon. It is also open on the second and fourth Tuesday evenings of the month between 5:30pm and 7pm. If you are in need of assistance or are interested in becoming a member of the SVDP ministry of service to the poor and needy, please contact us at 262-367-0800.



The 22nd Annual St. Charles Parish Golf Outing will be held on Monday, June 5 at Ironwood! More details and sponsorship opportunities to follow. Proceeds benefit the St. Charles Athletic Association. This is a great volunteer opportunity! For information or to volunteer, please email Ashley Leonhard at lillesandlaw@gmail.com.

One of the easiest ways to support St. Charles Parish and School is through the secured online e-giving system.



PARISH SUPPORT
FOR THE WEEKEND OF
MARCH 5TH

FISCAL YEAR
JULY 1 THRU JUNE 30

2022 - 2023

Envelopes.....	\$35,748.69
Offertory.....	\$2,235.75
Weekend Total	\$37,984.44
E-Giving	\$16,386.10
YTD	\$1,623,049.62

2021-2022

Envelopes.....	\$20,796.70
Offertory.....	\$1,801.33
Weekend Total	\$22,598.03
E-Giving	\$11,797.35
YTD	\$1,562,520.76

PRAYERS & BLESSINGS



Easter 2023 Festival of the Lord

Thank you to all who donated for the Easter flowers and decorations

In Memory of:

Wernberg Family, Werner Family, Balistreri Family, Crisci Family
Greg Blattner, Henry & Eleanor Henkel, Louis & Georgiana Blattner
Ervin & Irene Lutzenberger, Paula Konczal
Rosa Pfalz, Bernard & Lorraine Ruf
Norbert & Joseph Seipel
Bert Buss
Bud & Alys Hemmy, Fred Keppe, Ed Brunner & Eleanor McCarthy
Dan Murphy
Brian Gillstrom
Rachel Hansen
Roger Luedtke
Eric Molenda & Wilke Families
Dorothy D. & Joyce T.
William (Bill) Ring
James Klauser
Amy Lamerand Zott, Rose Rochette
Janeway Riley, Peter Murphy, Sue & Frank Meier
Jim Theeringer
Marg Kempen
Greg Pilgrim, Jerome Jungbluth, Paul Jungbluth & Victor Lancour
Pete Schneider, Louis & Molly Filo, Henry & Ida Schneider
Rev. Melvin H. Macoski, Carl Waszak & Monica Waszak

Frances LeBlanc, Catherine Vengren
Clarence & Norma Sanger, Wayne Sanger
Barb Sanger, Holly Sanger
Sharon Hoerter
Rita & Joe Jungbluth & their Sons Ralph & Bill
Joseph A. Cull, P.J. May
Kurt Shernell
Robert, Timothy & Peter Schmeckel
Theresa Hosack
Sitek & Zygmunt Family members
Ken Mautz & Ernie Alexander
James Flock, Patricia Flock, Patrick Fennig
Krystina Finn, Alice & Larry Majewski, Sue Walsh, Kate
Majewski, Alice Ling, Mickey & Jean Finn, John & Jim Finn
Edward Millot, Johannetta Millot
Joyce Davis, Dean M. Rindahl Sr.
John Jacunski
Jimmy Turner, James E. Turner
John Brauer
Ann Marie & Bob Williams
Max & Ken Horwatich, Katelin Condon
Stanley Wiliszewski



Special Intentions:

- For the reposed soul of Marg
- Good health for all loved ones
- Strength to continue living with excessive pain
- Companionship with Mary, my daughter
- Happy Marriage for son and daughter-in-law
- God Bless our grandchildren, including birth of new granddaughter
- Cancer free

Blessings Recalled:

- The Blessing of Family and a new Grandchild
- For a life well lived
- My good health
- Thankful for Grandchildren: Arden, Merritt, Ingrid, Louise, Florence, Rocco, Lucca, Nora, Finny & Ruby



*Mass of
Atonement*

**TUESDAY, APRIL 24, 2023
6 P.M.**

Holy Name of Jesus Catholic Church
818 Huron Ave. | Sheboygan, WI 53081

“ Please join me for our annual Mass of Atonement. This Mass is a faith-filled, heartfelt and visible action step as we continue our path of reconciliation and resolution. While no single statement or event can make up for the painful abuse of our most vulnerable brothers and sisters, as believers we know that in Christ’s suffering, death and resurrection, we find hope beyond measure as we move toward a brighter future. ”

- ARCHBISHOP JEROME E. LISTECKI



ADT-Monitored Home Security
Get 24-Hour Protection From a Name You Can Trust

- Burglary
- Flood Detection
- Fire Safety
- Carbon Monoxide

833-287-3502

TODD WANGERIN ELECTRIC, Inc.

Free Estimates - Licensed - Insured
Over 20 years experience

Todd Wangerin 262-719-4411
twelectric4411@att.net

ALTERNATIVE ROOFING & CONSTRUCTION

FREE ESTIMATES!

LOCAL CONTRACTOR
414-745-3365
wisconsinroofers.com

R&R Insurance
Rick Kalscheuer
Parish Member
MyKnowledgeBroker.com
800.566.7007

we know.

Hartland Terrace Assisted Living

- RN Lead 24-Hour Elite Care Team
- Full Continuum of Care • Memory Care
- All Inclusive Pricing • Private Studios
- Family Centered Care Model

327 North Avenue • Hartland | 262-369-4391
www.hartlandterrace.com

Complete line of Hispanic & American Groceries.
We specialize in fresh corn tortillas, Mexican bakery and our famous El Rey Tostadita Chips.

Serving Milwaukee Since 1978

El Rey 916 S. Cass F. Chavez Dr. Milw. WI 53204 414-943-1640	El Rey Family Market 3200 W. Oklahoma Ave. Milw. WI 53219 414-541-5200	El Rey Plaza 3524 W. Sunbeam St. Milw. WI 53215 414-943-1816	El Rey Food Mart 1323 W. Sunbeam St. Milw. WI 53204 414-388-7786
---	---	---	---

Holzhauser, Hewett & Barta s.c.
www.hhortho.com

Orthodontic Care For Children And Adults

Daniel Holzhauser DDS MS | Charles Hewett DDS MS | Joshua Barta DDS MS

520 Hartbrook Dr., Hartland 262-567-7076
2516 N. Grandview Blvd, Waukesha 262-547-6365
10225 W. Capitol Dr., Wauwatosa 414-463-5700

BUNZEL'S OLD FASHIONED MEAT MARKET

Fresh Custom Cut Choice Meats
Party Trays • Catering

Thank You For Supporting A Family Tradition

9015 W. BURLEIGH 873-7960
www.bunzelmeats.com

FISHING PHARMACIST

Andy Avgoulas, RPh
Wisconsin Licensed Fishing Guide
Call or Text: 262-893-4965
fishingpharmacist@gmail.com
Fishingpharmacist.com
Instagram: @fishing_pharmacist

Services Available:
Fly Fishing
Spin Fishing
Fly Tying Instruction
Fly Casting Instruction
Wading or Kayak Trips
Custom Multi-Day Trips

Your Prescription for Fishing Success

Carrier
Turn to the experts

Pat's Heating & Air Conditioning
262-567-7499
OCONOMOWOC
www.patsheating.com

FOOT & ANKLE
Associates of Wisconsin

Parish Member
Dr. Amy Galati
Call: (262) 542-3779
www.footandanklewi.com

KOWAL INVESTMENT GROUP
The Retirement Specialists

Aaron T. Kowal, CFP®
W238N1660 Busse Rd., Ste. 100, Waukesha, WI 53188
262-522-4040
www.kowalinvestmentgroup.com

Call us to schedule your free, no obligation, financial check-up today.

Henry & Diane Barvinski, Co-Owners

ECHO LAWN

A Complete Lawn, Landscape, and Snow Removal Service

Milwaukee 414-462-6670
Lake Country 262-695-8152

H+p CERTIFIED PUBLIC ACCOUNTANTS

Mark G. Hayes, CPA
262-367-5505 • 262-367-0545 Fax
365 Cottonwood Ave., Suite A • Hartland, WI 53029
mark@hpcpa.tax • www.hpcpa.tax

Hartland Family CHIROPRACTIC

211 Cottonwood Ave, Hartland (262) 367-7424
www.hartlandchiro.com

Dr. Hans Halaska

Palmer's STEAKHOUSE

www.Palmerssteakhouse.com
122 E. Capitol Dr. • Hartland, WI
262-369-3939

AMERICAN LEGION POST 294

VETS!! Won't you join the American Legion, the premier advocate for the veterans & the VA??? Congress pays attention to those organizations with numbers. Help us help those in need. By the way, our post is also an integral part of the community - supports 3 Legion ball teams, 1 softball team, 2 scout organizations and sends boys & girls to Boy's & Girl's State.

See all the programs @ wilegion.org
414-975-5951 • 231 GOODWIN AVE., HARTLAND

Culver's
701 Industrial Ct., Hartland 262-367-5800

TOWN BANK
AWINTRUST COMMUNITY BANK

800-433-3076
www.townbank.us

YOUR BROOKFIELD AND ELM GROVE NEIGHBOR
Low Commission Broker 3.95%

George & Meredith Raab
262.370.7998

See all SE WI property for sale at:
raabrealtyteam.com

LAKESIDE INTERNATIONAL TRUCKS BADGERLAND IDEALEASE

Offering Wisconsin businesses transportation solutions nearly 40 years.

- Truck Sales
- Parts
- Service
- Body Shop
- Leasing & Rental

Bill Reilley, Jr. Parish Member

SERVING: Milwaukee • Madison • Racine
West Bend • Sheboygan • Janesville • Monroe • Rockford

MICHAEL J. FINN S.C.
ATTORNEY AT LAW
PARISH MEMBER

262-367-8485
mjfinnsc@sbcglobal.net
163 E. Capitol Dr., Hartland, WI 53029

VISU-SEWER, INC.
262-695-2340

Professional Sewer Inspection, Maintenance and Rehabilitation Services
Parish Members
www.visu-sewer.com

PROMACH Performance. Packaged.

CL&D \$2,000 RETENTION BONUS IN THE FIRST YEAR!
\$20+/HOUR
aldgraphics.com/careers

LAKESIDE INTERNATIONAL TRUCKS BADGERLAND IDEALEASE

Offering Wisconsin businesses transportation solutions nearly 40 years.

- Truck Sales
- Parts
- Service
- Body Shop
- Leasing & Rental

Bill Reilley, Jr. Parish Member

SERVING: Milwaukee • Madison • Racine
West Bend • Sheboygan • Janesville • Monroe • Rockford

CHARLES ST.
St. Charles School... We choose Christ in learning, living, & values in the light of our faith.
262-367-2040
www.stcharlesschoolhartland.com

JENSON MOTORS Auto - Truck Repair

Hours: Mon-Fri 7:30-5:30
Proprietor: Guy Jenson
262-367-5556
364 Cottonwood Ave., Hartland, WI

KLINK'S KARPETS, INC
Hartland's Floor Covering Center
Family Owned & Operated for over 47 Years
Carpeting & Hard Surfaces
107 North Ave. Hartland, WI
367-4670 Parish Member

We help real estate investors invest in passive assets and defer tax.
If you are planning on selling your investment property, let's talk.

BRANDON BRUCKMAN
414-882-8738
www.investwithinsight.com

EVERT-LUKO FUNERAL HOME & CREMATION SERVICES

Guiding with skillful hands and soulful hearts

262-367-2156
www.evertlukofuneralhome.com

DAVE PERRY
heating • cooling

Proudly Serving the Lake Country Area for more than 20 years
Heating • Air Conditioning • Geothermal
New Construction • Replacement
262.966.1959
www.daveperryheatingandcooling.com

INSIGHT INVESTMENT ADVISORS

BRANDON BRUCKMAN
414-882-8738
www.investwithinsight.com

COURI INSURANCE AGENCY

Protection for the Unexpected™

Coverages
IMPORTANT
Pricing
IMPORTANT
Low Costs
GREAT COVERAGES
Jerry & Judie Couri
262-548-8077 • couri.com

Generations DENTAL

Jim Muenzenberger, D.D.S.
and Kelly Newman, D.D.S.
Parish Members
GenerationsDentalHartland.com

130 E. Capitol Dr.
Hartland, WI 53029
Office 262-367-2750

SPRUNG ARMSTRONG AIR

Heating, Sheet Metal & Well Pump Service
7024 Main St., Merton
538-1400
Service • Repair & New Construction
Residential & Commercial
Parish Members

Lake Country Eye Care

520 Hartbrook Dr. • Hartland, WI 53029
Amber A. Dentz, OD - Parishioner
www.lakecountryeyecare.com
262-367-6610

Helping you achieve financial dreams



James Dunn
 Managing Director – Financial Advisor
 (262) 395-1101
www.dunninvestmentmanagement.com



Lake Five
 LANDSCAPE SUPPLY LLC

Mulch • Firewood • Nursery
262-777-1523
LakeFiveSupply.com



It's Time to Travel Again!
 Kristin Walsh
kristinczwalsh@gmail.com
www.CZtravel.org

REICHL & KOLSTAD
ORTHODONTICS
 Dr. Peter Reichl & Dr. James Kolstad
 look forward to meeting you!
 Offering Traditional Braces & Invisalign
 Located in Waukesha, Mukwonago & Hartland
262-547-2827
www.ReichlKolstadOrtho.com

Falbo Bros. Pizzeria
 Small Business Specials & Catering
 Extensive Delivery Range
 418 Merton Ave, Hartland | 262-367-2700

Hand Crafted
Solid Wood Children's Furniture
TOY CHESTS, TABLES, CHAIRS
414-881-3831 Elmer Tinti
 Parish Member

PAUN Construction
 Specializing in Masonry Residential & Commercial
 W300 W7741 Christine Ln., Hartland, WI 53029
 Robert J. Paun (262) 326-6043
www.paunconstruction.com
mail@paunconstruction.com

BEAUTYCOUNTER
 Safer Skincare, Makeup, Haircare, Bodycare & More
 Colleen Fry, Senior Consultant
 610-730-1290
colleenfry@gmail.com
Beautycounter.com/colleenfry

What Will Be Your Legacy?
 If you value your faith and your family, I welcome the opportunity to share my faith-based perspective in union with my financial experience in order to co-create a personal legacy strategy. I can assist with: Portfolio Management | Retirement Planning | Financial & Legacy Strategies | Special Needs Planning

Parishioner
 advisor.morganstanley.com/the-riverwood-wealth-management-group

Kurt Maltby, CFP®, ChSNC®
 CERTIFIED FINANCIAL PLANNER™
 Assistant Vice President, Financial Advisor

Morgan Stanley
 20975 Swenson Drive, Waukesha
 Phone: (262) 523-8303 | NMLS # 1504808

Morgan Stanley and its Financial Advisors do not provide tax or legal advice. Individuals should seek advice based on their particular circumstances from an independent tax advisor. Morgan Stanley Smith Barney LLC. Member SIPC. CRC218548 08/18

CARPET PLUS, INC.
 We Bring the Showroom to You!
(414) 573-0105
 Proudly Serving Crusader Nation for over 20 years!
Dan Taylor, Parish Member

DON CULL EXCAVATING
W298 N9248 Center Oak Rd
 Serpic & Mound Systems Grading
966-7038
 MPRS 221589

SPORTS GRILL
 PIZZA • FRIDAY FISH FRY • SANDWICHES
 *\$5.00 OFF ANY 16" PIZZA
 *SUNDAY'S "KIDS EAT FREE" WITH ADULT PURCHASE
 We do Parties & Catering!
 Not valid with any other offers or coupons
369-0079
300 COTTONWOOD • HARTLAND
 PARISH MEMBER

Emanuele & Haut, CPAs, SC
 Certified Public Accountants
Emanuele-Haut
 certified public accountants
 142 E. Capitol Dr. Hartland, WI
 610-730-1290
sam@ehcpas.com
 Parish Member
262.367.1040

Broaching Technologies, L.L.C.
 Machines - Tooling - Subcontracting

Blind and Thru Hole: www.keyway-spline-broaching.com
Broaching, Splining, Keyseating, Slotting, Shaping P (262) 820-1200
sales@broachingtech.com

Waukesha Physical Therapy Clinics
 Sports Medicine and Post Surgical Tx
 600 Hartbrook Drive, Ste 111
 In Sendiks Plaza 262-367-3110
Insurance & Medicare Accepted

Pepino's
 Famous For Our Pizza Since 1971
CARRY-OUT & DELIVERY 262-369-9050
 Sendik's Hartland Plaza - 600 Hartbrook Dr., Hartland

MY OTHER GARAGE
 SELF STORAGE
262-966-9000
 1 Mile East of North Lake

Angela Isherwood
 Owner & Luxury Travel Designer
 Parishioner
262.229.9271
Angela@OliveAndAtlasTravel.com
www.OliveAndAtlasTravel.com

The GOOD DENTIST
Dr. Marta Ostromecki, DDS Parishioner
(262) 223-3169
www.tgdentist.com
Always Accepting New Patients
N67W28025 Sussex Rd., Suite 100, Hartland, WI



Please Support these **CONTRACTORS**
 Thank You to these contractors helping St Charles grow!

"GET YOUR ROOF ON™"
Tip Top Roofing & Construction
Okauche, WI • TipTopRoofWI.com

CONDITIONED AIR DESIGN, INC.
 QUALITY WORK AT EVERY DEGREE
 Mechanical contractor providing Southeastern Wisconsin with commercial HVAC service, design, and installation
(414) 546-2020 | condairdesign.com

CCI
 Corporate Contractors Inc
CCIWI.COM

SUPPORT OUR ADVERTISERS!

NELCO ELECTRIC, INC.
 GERMANTOWN, WI
 Commercial • Industrial • Residential
 24 Hour Service **262-502-9950**
WWW.NELCOELECTRIC.COM
 Barb Jarchow Parishioner

DFI OMASINI, INC.
 CONTRACTORS
 262 / 820-8300
 WHEN YOU EXPECT THE BEST.

Wolf Electric LLC
 Commercial, Industrial, Residential
Garrett Wolf • Master Electrician/Parishioner
Commercial • Industrial • Residential
(414) 899-3608 • www.wolfelectricllc.com

Join our Team!
 Serve your local Catholic Community, become an agent with the Knights of Columbus!
 Contact us at www.kofcwi.org
 Life Insurance • Disability Income Insurance
 Long Term Insurance • Retirement Annuities

Tim J. Nowak, FICF
 General Agent
 (920) 810-6188
timothy.nowak@kofc.org

FRONTIER
 TITLE & CLOSING SERVICES
 1130 James Drive, Hartland, WI 53029
 Office: 262-361-4466 Fax: 262-361-4462
www.frontiertitlellc.com
Frontier Title & Closing Services, LLC
 Lake Country's Most Experienced
 Title & Closing Company
 Specializing in Residential, Commercial & New Construction Transactions
 Serving the Real Estate Community!

Custom Asphalt Solutions Since 1941
WOLF PAVING
 Parking Lots
 Private Roads
 Walking Paths
 Athletic Courts
wolfpaving.com

zimmerman
 ARCHITECTURAL STUDIOS, INC.
 800 West Mt. Vernon Avenue
 Milwaukee, WI 53217 | zimmerman.com
 Telephone: (414) 478-9500
 Fax: (414) 478-9504

ELITE CEILINGS, LLC.
 STRAIGHT, LEVEL AND SQUARE
 Acoustical Ceilings & Suspended Drywall Furring Grid

Steve Balistreri
 President & Project Manager
 1211 S 122nd St West Allis, WI 53214
 Cell: 414-617-6646
eliteceilings@yahoo.com