




*At St. Charles, all are invited to
meet Christ, know Christ,
love Christ and serve Christ.*

October 31, 2021

THIRTY-FIRST SUNDAY IN ORDINARY TIME



*You Are Invited to
Honor and Remember the Saints
and Your Loved Ones
at these Reverent Celebrations
at St. Charles.*

**ALL SAINTS DAY - Monday, November 1st
(Not a Holy Day of Obligation this Year)**

- Masses at 8:30 am (All School Mass) and 7:00 pm

ALL SOULS DAY - Tuesday, November 2nd

- Mass at 8:30 am
- Prayer Service at Noon in the St. Charles Cemetery on Hill Street
- Candlelight Mass at 7:00 pm to honor the dead

**FEAST DAY OF ST. CHARLES BORROMEIO -
Thursday, November 4th**

- Mass at 8:30 am (All School Mass)



313 Circle Drive, Hartland, WI 53029 • 262-367-0800
www.stcharleshartland.com • email: parish@stcharleshartland.com



WELCOME TO ST. CHARLES - WE ARE HERE FOR YOU



PASTOR
Fr. Ken Omernick



ASSOCIATE PASTOR
Fr. Nick Baumgardner



PERMANENT DEACON
Rob Mitchell

ST. CHARLES STAFF TEAMS

TEACHING PARISH SEMINARIANS:

Robert Ross, rross@sfs.edu

David Sweeney, dsweeney@sfs.edu

SCHOOL TEAM 262-367-2040

Principal/Team Lead: Dan Garvey, Ext. 208,
dgarvey@stcharleshartland.org

Advancement Officer: Allison Caswell, Ext. 227,
acaswell@stcharleshartland.org

School Administrative: Lisa Moehrke, Ext. 206,
school@stcharleshartland.com

School Administrative: Karen Dejewski, Ext. 206,
school@stcharleshartland.com

DISCIPLESHIP TEAM

Associate Pastor/Team Lead: Fr. Nick Baumgardner,
nbaumgardner@stcharleshartland.org

Adult Small Groups: Maria Notch, Ext. 220,
mnotch@stcharleshartland.org

Children's Discipleship: Alicia Van Hecke, Ext. 205,
avanhecke@stcharleshartland.org

Student Discipleship Lead: Nick Scanlan, Ext. 209,
nscanlan@stcharleshartland.org

Student Discipleship Co-lead: Rachel Heffron, Ext. 221,
rheffron@stcharleshartland.org

Discipleship Coordinator: Marianne Giovingo, Ext. 230,
mgiovingo@stcharleshartland.org

Baptism Coordinator: Mary Jo Romportl, Ext. 202,
mjromportl@stcharleshartland.org

OPERATIONS TEAM

Operations Manager/Team Lead: Marge Beck, Ext. 201,
mbeck@stcharleshartland.org

Facilities Manager: Mike Cattani, Ext. 210,
mcattani@stcharleshartland.org

Maintenance Manager: Tim Orzechowski, Ext. 217,
torzechowski@stcharleshartland.org

Bookkeeping Specialist: Dee Anne Hamer, Ext. 215,
dhamer@stcharleshartland.org

Cornerstone/Safeguarding: Karen Dejewski,
cornerstoneproject@stcharleshartland.org

WORSHIP TEAM

Worship Lead: Peg Kasun, Ext. 225,
pkasun@stcharleshartland.org

Deacon: Deacon Rob Mitchell
rmitchell@stcharleshartland.org

Liturgist : Elizabeth Thompson, M.Div., 262-367-6704
ethompson@stcharleshartland.org

Musician: Scott Currier, Ext. 225,
scurrier@stcharleshartland.org

Wedding Coordinator: Dee Anne Hamer, Ext. 222,
dhamer@stcharleshartland.org

COMMUNICATIONS & STEWARDSHIP TEAM

Assist. to the Pastor/Team Lead: Terrie Carew, Ext. 224,
tcarew@stcharleshartland.org

Communications Coordinator: Allison Caswell, Ext. 227,
acaswell@stcharleshartland.org

Graphic Design Specialist: Renee Krier, Ext. 224,
rkrier@stcharleshartland.org

Engagement Coordinator: Marianne Giovingo, Ext. 226,
mgiovingo@stcharleshartland.org

Parishioner Engagement: Nancy Neuser,
nneuser@stcharleshartland.org

Administrative: Kathy Gillstrom, Ext. 200,
kgillstrom@stcharleshartland.org

Administrative: Mary Jo Romportl, Ext. 200,
mjromportl@stcharleshartland.org

PARISH OFFICE: 262-367-0800,
Mon. - Fri., 8 am - 4 pm

EMAIL US: parish@stcharleshartland.org

WEBSITE & LIVESTREAM: www.stcharleshartland.com

PARISH SCHOOL: 262-367-2040,
school@stcharleshartland.com



WELCOME TO ST. CHARLES - WE ARE HERE FOR YOU

SATURDAY MASS OF ANTICIPATION: 5:00pm

SUNDAY MASS TIMES: 7:00am, 9:00am, 11:00am & 6:00pm

WEEKDAY MASS: Monday - Friday: 8:30am & Saturday: 8:30am

TUESDAY TRADITIONAL MASS

Monthly on the fourth Tuesday at 5:30 pm

EUCCHARISTIC ADORATION

Mondays: 5:00-7:00pm with closing prayer (includes music)

Tuesdays: 6:30-8:00pm with 7:30pm Rosary and closing prayer

Fridays: 9:00am-3:00pm with the Divine Mercy Chaplet at 3:00pm followed by Benediction

RECONCILIATION

Saturdays: 3:30pm - 4:30pm & Thursdays: 5:00pm - 6:00pm or by appointment (schedule by calling the Parish Office).

SACRAMENT OF THE SICK

By appointment with Fr. Ken or Fr. Nick (schedule by calling the Parish Office).

ANOINTING MASSES: 2nd & 4th Fridays every month at 8:30 am

WE ARE HERE TO HELP YOU WITH:

- JOINING OUR PARISH
- PLANNING A WEDDING
- EXPECTING, ADOPTING OR A BIRTH OF A CHILD
- BECOMING FULLY CATHOLIC
- JOINING A SMALL GROUP

For help with any of these areas please contact the Parish Office at 262-367-0800 or parish@stcharleshartland.org.

OUTREACH SERVICES TEAM: Terri Blazek: 262-367-7608, jtblazek@wi.rr.com

TO ASK FOR PRAYERS or to be added to the email list, please email: prayernetwork@stcharleshartland.org

FOR EMERGENCY PRAYERS, please email: emergencyprayers@stcharleshartland.org

Printed weekly prayer sheets are available on the information wall.

ST. VINCENT DE PAUL: if you need food, shelter or assistance call 262-367-0800 (Parish Office)

NEED HOME COMMUNION:

For information call 262-367-0800 (Parish Office)



Wedding Banns

1st Bann ~ Rachel Beckman & Josh Hollow

Mass Intentions for the Week of October 31st



Sunday, October 31 ~ Halloween

7:00 am † Shelley Sarabia
9:00 am † Holly Sanger
11:00 am † Ronald Staszewski
6:00 pm † Vince Giacalone

Monday, November 1 ~ All Saints Day

8:30 am Living and Deceased Members of St. Charles
7:00 pm For the St. Charles Deceased Priests and Help-out Priests

Tuesday, November 2 ~ All Souls Day

8:30 am † Magdalena Selthafner
7:00 pm † Candlelight Memorial Mass

Wednesday, November 3

8:30 am † Christine Melloch

Thursday, November 4

8:30 am † Katie Romenesko

Friday, November 5

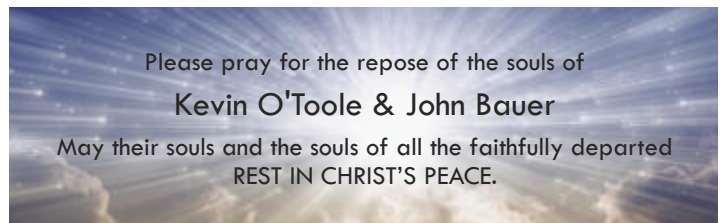
8:30 am † Arnold Berg

Saturday, November 6

8:30 am † Donna Laughlin
5:00 pm † John & Bernadette Ney

Sunday, November 7

7:00 am Living and Deceased Members of St. Charles
9:00 am † Dorothy Wiegel
11:00 am † Magdalena Selthafner
6:00 pm † Todd Craft



Bulletin Advertisers of the Week

Please support our advertisers!

DUNN
INVESTMENT MANAGEMENT GROUP
of RBC Wealth Management
James P. Dunn
Managing Director - Financial Advisor
Senior Portfolio Manager - Portfolio Focus
18500 West Corporate Drive, Ste. 100
Brookfield, WI 53045
Call (262) 395-1101 for an appointment
james.dunn@rbc.com

- Customized portfolio management & investment consulting for individuals & institutions
- Comprehensive investment advice & retirement planning
- Recently retired or changed jobs? Providing specialized 401K rollover solutions

A Division of RBC Capital Markets LLC NYSE/FINRA/SIPC

SPORTS GRILL

PIZZA • FRIDAY FISH FRY • SANDWICHES
*\$5.00 OFF ANY 16" PIZZA
*SUNDAY'S "KIDS EAT FREE" WITH ADULT PURCHASE
We do Parties & Catering!
Not valid with any other offers or coupons
369-0079
300 COTTONWOOD • HARTLAND
PARISH MEMBER



THIS WEEKEND'S GOSPEL REFLECTION

by Marianne Giovingo

St. Charles Engagement & Discipleship Coordinator

31ST SUNDAY IN ORDINARY TIME

"Hear, O Israel! The LORD is our God, the LORD alone! Therefore, you shall love the LORD, your God, with all your heart, and with all your soul, and with all your strength. Take to heart these words which I enjoin on you today."

The Gospel of Mark reiterates the plea spoken of in the book of Deuteronomy, referencing one of the greatest commandments. Can we take a moment to just do a reality check on our own faith journey:

- Am I loving God above all else?
- Where am I investing my time, money, and service to others?

These are indicators that can help us become aware of where God is in priority to other things. Now, please know I am aware of the necessity to work, to make meals, to drive yourself and children to various activities and appointments. I would like to beg the question if those necessities are being used as moments to better see how God is working in your life or are they simply tasks to accomplish and check off. This perspective shift matters.

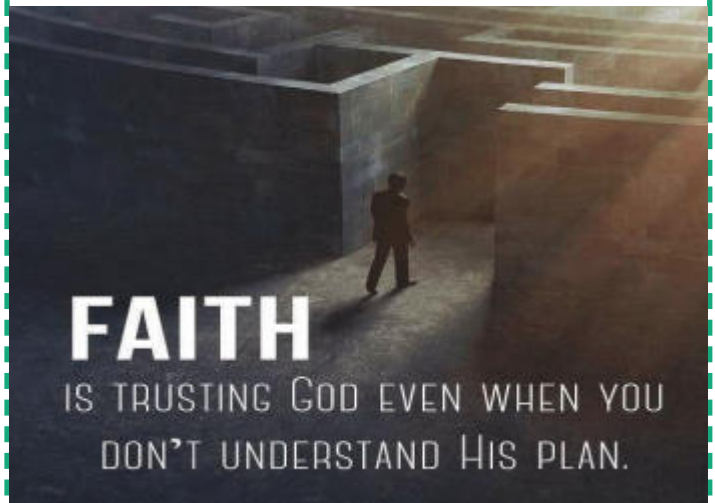
I invite you this week to consciously bring God into everything you participate in. As you get up for the day, let gratitude for all God has done, is doing, and will do be the mode out of which you awake (this means rejecting the want to complain or sleep in and rather receive the gift of the day ahead.)

So we have been given this command not simply as a rule to follow, but as an opportunity to grow closer to God through the ordinary circumstances and people of our day. Jesus, we ask you for the grace to help us see you in all the little and big ways in which You are present to us personally and intimately!



15 minutes each day spent in God's presence – reading, reflecting, responding and resting with his Word – adds up to 90 hours in one year. That is time well spent and a testimony to how a little at a time turns into something remarkable!

— Reflection questions for Sunday, October 31st —



- In the story of the initial encounter between Elijah and the widow, we see the widow rewarded for her courage and faith. When has your faith resulted in a positive outcome?
- The reading from Hebrews focuses on Jesus' sacrificial death on earth, his intercession for us from heaven, and his eventual return at the end of time. Who do you know needs to hear this succinct summary of our faith in Christ?
- In the Gospel reading we hear Jesus criticize the scribes for their hypocrisy and praise the widow for her generosity. How do you ensure your actions and faith are authentic?

Readings for the Week of October 31st

- Sunday:** Dt 6:2-6/Ps 18:2-3, 3-4, 47, 51 [2]/Heb 7:23-28/
Mk 12:28b-34
- Monday:** Rv 7:2-4, 9-14/Ps 24:1-2, 3-4, 5-6 [cf. 6]/1 Jn 3:1-3/
Mt 5:1-12a
- Tuesday:** Wis 3:1-9/Ps 23:1-3a, 3b-4, 5, 6 [1 or 4ab]/Rom 5:5-11 or Rom 6:3-9/Jn 6:37-40a
- Wednesday:** Rom 13:8-10/Ps 112:1b-2, 4-5, 9 [5a]/Lk 14:25-33
- Thursday:** Rom 14:7-12/Ps 27:1bcde, 4, 13-14 [13]/Lk 15:1-10
- Friday:** Rom 15:14-21/Ps 98:1, 2-3ab, 3cd-4 [cf. 2b]/Lk 16:1-8
- Saturday:** Rom 16:3-9, 16, 22-27/Ps 145:2-3, 4-5, 10-11 [1b]/
Lk 16:9-15
- Next Sunday:** 1 Kgs 17:10-16/Ps 146:7, 8-9, 9-10 [1b]/
Heb 9:24-28/Mk 12:38-44 or 12:41-4



READ. REFLECT. RESPOND. REST.

Cut out and keep in your Bible for reference!

EVERYDAY STEWARDSHIP RECOGNIZE GOD IN YOUR ORDINARY MOMENTS

THE DAILY EXAMEN OF STEWARDSHIP

“Stewardship” can get a bum rap these days. When folks hear the term “stewardship” from the pulpit, their eyes tend to kind of glaze over. “Here’s Father asking for more money,” they groan inwardly, “Get ready for the passing of the pledge cards.”

Christ refutes this idea when he gives us what he calls the greatest commandments — instructing us to love God and to love our neighbor. Now, Christ is a man who chose his words carefully. He meant exactly what he said — and he didn’t say that the greatest commandments were to tithe and to give money to charity. If he had wanted stewardship to be only about money, he would have said so.

Sometimes we are indeed called to show our love for God and neighbor in the form of a financial gift. But the concept of Everyday Stewardship — living mindfully in prayer, grateful for our blessings, and gracious to our neighbors, committed to God, and accountable to each other — is about so much more.

I propose a twist on the long-held practice of the “Daily Examen” — a pious devotion wherein, at day’s end, we go over the events of the last 24 hours and discern God’s will. A Daily Examen of Stewardship might contain questions like this:

How did I love God today? What did God give me today? With whom did I share it? What did I give to Him?

To whom did I reach out today? Who reached out to me? Where was God on my list of priorities today?

— Tracy Earl Welliver, MTS



PRAYER TO SERVE OTHERS JOYOUSLY

Lord, thank you for letting us work with you to share your joy with the world. Help us not take for granted the gift it is to share your gospel to the nations, and to our neighbors. Help us have eyes to see the needs around us and to respond to those needs in joy and hope.

Thank you so much Lord for your love and care over us.

*In Jesus’ Name,
Amen.*



LIVE THE LITURGY INSPIRATION FOR THE WEEK

“Hear, O Israel! The Lord is our God, the Lord alone!” This ancient prayer has been found on the lips of many of God’s devoted servants throughout history. In its simplicity it reminds us of a timeless truth we often forget. We often worship other gods rather than the One true God and find all of our relationships distorted as a result. This One True and Eternal God who alone has a solitary claim on us and must be loved with all our heart, soul, mind, and strength. It is important that we remind ourselves often of God’s primary place in our lives, lest we get distracted and sidetracked. But there is one more important piece that Jesus insists belongs with this. We must love our neighbor as ourselves. You cannot have one without the other. God’s presence within each one of us requires that all of our relationships work together. This is at the heart of God’s kingdom.

©LPi

2022 PARISH & SCHOOL DINNER AND AUCTION

SAVE THE DATE for our annual Parish & School Dinner and Auction on February 26, 2022! We are so excited to celebrate St. Charles as a community and hope to see you there. More information is coming soon.

GIVING YOUR TIME AND TALENT is a wonderful way to support the Auction! We have many opportunities for you to volunteer between now and the day of the event. Please visit our website to check out our News story and see how you can help us this year. Time commitments range depending on what you sign up for. Work full time? There are ways you can help from home! Students can also volunteer!

Thank you for supporting the 2022 Dinner & Auction!

FALL FEST AT ST. CHARLES

2022 FALL FEST planning is well on it's way!
We need your help to bring back our favorite event!

Tuesday, November 9th at 7pm in the Parish Hall

Fall Fest planning is well on its way but it won't happen without you! All are invited to come and learn more about what's different in 2022. You'll hear about the proposed teams such as Entertainment, Food & Beverage, Raffle, Logistics, 5K Run/Walk, Volunteers, Sponsorship, and Communications. These teams will bring this amazing three-day festival to life. Feel free to bring a friend with you. See you there!

USE SCRIP FOR YOUR HOLIDAY SHOPPING!

Use Scrip to purchase your Thanksgiving Day fixings or get a start on your Christmas shopping. Remember, when you buy products with Scrip gift cards, you support our parish and school! You can order gift cards through their website (www.shopwithscrip.com) and have them sent to St. Charles' Parish Office to pick up. You are also able to fill out the paper order form at the Parish Office to receive your order. Thank you for supporting St. Charles!



CALLING ALL TRIVIA BUFFS!

Join us for St. Charles Trivia Night
Saturday, November 20th
in the Borromeo Room

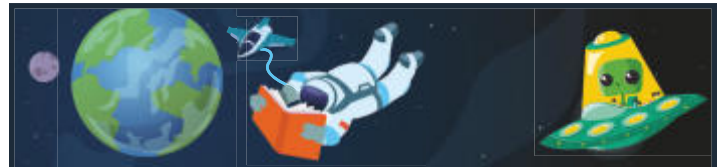
Doors will open at 6:30 pm. Games start at 7:00 pm. COST IS \$20 PER PERSON. Teams of 8 adults will compete. Beer, wine, soda and snacks included.

Space is limited. Please register by Nov. 12th. **Please visit the NEWS story on our website for more information and to register.**

Get a team together for a night of Trivia, Fun, and Fellowship!

We are also looking for a volunteer willing to chair the trivia night for next year.

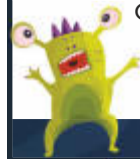
If you would like to help out, please contact Lisa Andekian at elizabeth.andekian@gmail.com or 414-322-4549 or Danielle Cruise at danielle.peterson5@gmail.com or 414-688-0424.



BLAST OFF TO THE ST. CHARLES' FOLLETT BOOK FAIR

November 9th-14th

Need a good book? Or looking for Christmas Presents? Come visit the St. Charles Follett Book Fair November 9th-14th. We will be open in the Borromeo Room during school hours on Tuesday, Nov. 9 and Wednesday Nov. 10th as well as after all weekend Masses Nov. 13-14. We will also be open in the hallway by the school library during Parent/Teacher Conferences on Wed, Nov. 10th from 4-8 pm and on Thursday, Nov. 11th from 8 am-4 pm. All proceeds benefit the St. Charles School Library.



The only way you can serve
God is by serving other people.

Rich Warren

STEWARDSHIP (TIME, TALENT AND TREASURE)

CIRCLE OF LOVE IS BACK THIS YEAR!

Look for Circle of Love's Miracle Tree next weekend, November 6th & 7th. The tree will be located in the Church Narthex. Take a tag off the tree and make Christmas brighter and happier for someone in need.

If you have any questions, call Kathy Gillstrom at (262) 370-3306 or Kathy Romaine at (262) 691-3684.

Volunteers: Our next meeting is this Tuesday, November 2nd at 1 pm in the Borromeo Room. If you would like to Volunteer for Circle of Love, please call either of the above phone numbers.



ST. VINCENT de PAUL SOCIETY



FOOD PANTRY NEEDS: \$25 Gift cards to Piggly Wiggly or Pic-n-Save for Thanksgiving meals, \$15 gift cards to Piggly Wiggly or Pic-n-Save, Kleenex

Today is SHARE SUNDAY! Donations of unexpired food and hygiene items for the pantry may be placed in the SVdP barrel near the church office. If you would like to help us with monetary needs, collection envelopes are located at the SVdP boxes located in the narthex and next to the hallway shelf. If your donation is intended for the food pantry, please indicate that on the memo line of your check or envelope. Thank you for helping us bless others.

The Food Pantry is located at 229 Lawn Street, Hartland, and is open Tuesdays between 10 AM and noon. Evening hours are on the second and fourth Tuesday of the month between 5:30 PM and 7 PM. If you need other assistance or would like to become a member of our ministry of service to the poor and needy, please contact us at 262-367-0800.



ST. CHARLES NIGHT AT CULVER'S IN HARTLAND

Monday, November 1st from 5:00-8:00 pm

Mention that you are with St. Charles and the School receives 10% of the evening's sales! Thanks for your support!



DO YOU ENJOY SHARING GOD'S LOVE?

There are many St. Charles parishioners who are homebound and unable to celebrate the Holy Eucharist with others each week at Mass. For many of these individuals, it is the hardest part about being homebound. We are looking for volunteers to bring the Holy Eucharistic to our fellow parishioners in their homes. Do you enjoy sharing God's love? Please consider this most worthwhile ministry. For more information, please call Kerry Shannon at 262-696-4128 or call the Parish Office at 262-367-0800.

BULLETIN DUE DATES!

If you have an event(s) you would like to publicize in a November, December and/or January bulletin, please submit your information by the due dates listed below. This earlier deadline is due to the printer's holiday schedule. Please submit all articles by 8:00 am on the due date. Thank you!

- Nov. 14th Bulletin information is due Nov. 8th
- Nov. 21st Bulletin information is due Nov. 10th
- Nov. 28th Bulletin information is due Nov. 15th
- Dec. 5th Bulletin information is due Nov. 22nd
- Dec. 12th Bulletin information is due Nov. 29th
- Dec. 19th Bulletin information is due Dec. 6th
- Dec. 26th Bulletin information is due Dec. 13th
- Jan. 2nd Bulletin information is due Dec. 20th



PARISH SUPPORT FOR THE WEEKEND OF SEPTEMBER 19TH

FISCAL YEAR
JULY 1 THRU JUNE 30

2021-2022

Envelopes.....	\$16,503.50
Offertory.....	\$1,774.31
Weekend Total	\$18,277.81
E-Giving	\$9,069.75
YTD	\$399,791.48

2020-2021

Envelopes.....	\$19,868.50
Offertory.....	\$525.00
Weekend Total	\$20,393.50
E-Giving	\$7,527.85
YTD	\$369,205.69



St. Charles Borromeo | Feast Day November 4 Mass celebrated at St. Charles at 8:30 am

St. Charles Borromeo (1538 - 1584) is most known for living during the time of the Protestant Reformation and helped influence reform of the whole Church during the final years of the Council of Trent.

Although St. Charles Borromeo belonged to nobility, he greatly desired to serve the Church. In 1559, his uncle was elected Pope Pius IV. He made Charles cardinal-deacon and administrator of the Archdiocese of Milan. At the time, Charles was a simple student, but because of his intellectual qualities, he was assigned several important offices connected with the Vatican. After the death of his brother, he decided to become a priest and was ordained at age 25. Soon after he became bishop of Milan.

Quietly working behind the scenes, St. Charles Borromeo is credited with keeping the Council of Trent in session and encouraging the pope to renew the Council in 1562, after its 10-year suspension. Afterwards, he devoted his time to serving in the Archdiocese of Milan.

Among his most important actions during his life, St. Charles Borromeo established seminaries, colleges, and communities for the education of candidates for holy orders. His emphasis on Catholic learning greatly increased the preparation of men for the priesthood and benefited their congregations. He died at the age of 46. ©LPi

Prayer of St. Charles Borromeo

Almighty God, you have generously made known to human beings the mysteries of your life through Jesus Christ your son, in the Holy Spirit. Enlighten my mind to know these mysteries which your Church treasures and teaches.

Move my heart to love them and my will to live in accord with them. Give me the ability to teach this faith to others without pride, without ostentation, and without personal gain.

Let me realize that I am simply your instrument for bringing others to the knowledge of the wonderful things you have done for all your creatures. Help me to be faithful to this task that you have entrusted to me.

Amen.



St. Charles Borromeo
Family Crest

Patron Saint of: bishops, catechists, catechumens, seminarians, spiritual directors, spiritual leaders, against ulcers, colic, intestinal disorders, stomach diseases, apple orchards, starch makers, Lombardy, Italy, Monterey, California, São Carlos, Brazil.

Grieving with Great HOPE

FIVE-WEEK GRIEF SUPPORT WORKSHOP AT ST. CHARLES

November 13, 20 and 27 & December 4 and 11
Saturdays, 9:30 - 11:30 am in the Borromeo Room



Grieving with Great HOPE is a five-week grief support workshop using a video on-demand format offered by St. Charles Bereavement Ministry. It offers a prayerful, practical and personal approach for anyone who is mourning the loss of a loved one. If you have lost a spouse, a child (including pregnancy loss), a grandchild, a parent, another family member or a friend, you are encouraged to attend. Presenters will include, two priests, as well as John and Sandy O'Shaughnessy from Good Mourning Ministry, a Catholic bereavement organization.

If you would like to register for the workshop, visit the parish website and click on the NEWS story to find the online form. For more information or questions, please contact Maria Notch at mnotch@stcharleshartland.org.



St. Charles Parish & School
313 Circle Drive | Hartland, WI 53029
262-367-0800 | www.stcharleshartland.com



WORKSHOP RETREAT WEEKEND

All women of the parish are invited to attend a weekend workshop at the International Schoenstatt Center, Waukesha on the weekend of Nov. 19-21. The theme for the weekend is "The Inner and Outer You". Cost for the weekend is \$150 and includes overnight accommodations and meals. The weekend includes presentations, quiet time, Reconciliation, and Mass. To register or for more information, call 262-522-4322 or email schmotherswis@gmail.com. The address of the Center is W284 N698 Cherry Lane, Waukesha.

COUNTRY CHRISTMAS 2021

Country Christmas Art and Craft Fair at St. James in Mukwonago is on November 13, 9am-3pm in the St. James Activity Center. This is one of the most popular holiday craft fairs in the area, so don't miss it! Enjoy a day of shopping, have lunch at the "Craftside Café" and enjoy our famous Christian Women dessert buffet. We are currently registering vendors so please call Krys (or text) at 262-844-7658 to register or online at stjamesmukwonago.org.



REDEMPTORIST RETREAT CENTER
REST · REFLECT · RENEW

Weekend Silent Preached Retreats for Women
Theme: "Healing in a Wounded World"

November 12 - 14, 2021
March 18 - 20, 2022
March 25 - 27, 2022

Fee: \$ 230 per person

Arrival on Friday evening at 6:15 pm. No Friday evening meal served.
Retreat ends on Sunday about 1:00 pm, after Mass and lunch.

To register for a retreat, visit www.redemptoristretreat.org/shop

Black Catholic and Ethnic Ministries' Office Presents

Legacy of Enduring Faith

Celebrating Black Catholic History Month

November 6, 2021
Topic: "Authentically Black and Truly Catholic"
Presenter: Ms. Vevette Hill-Nwagbaraocha, (Cor Unum, MA student)

November 13, 2021
Panel Dialogue: "Plenty Good Room"
Unity in Diversity within Catholics of African Descent
Panelists: Fessahaye Mebrahtu, Sr. Callista Robinson, OSF
Mary Words, Fr. Fred Alexander and Reine Marie Assana
Moderator: Rev. Romanus Nwaru, D Min., (Pastor, Blessed Savior)

November 20, 2021
Topic: "Uncommon Faithfulness"
Presenter: Mr. Simon Biagui, (Cor Unum, MA student)

8:30-11 a.m. · St. Francis of Assisi Church Hall
1927 N Vel R Phillips Ave., Milwaukee, WI 53212

Continental Breakfast Served
COVID-19 Protocol Followed • (Masks Required - Indoor Activities)

Free event - RSVP required
<https://archmil.regfox.com/legacy-of-enduring-faith>

Fessahaye Mebrahtu, Director of Black Catholic and Ethnic Ministries
Mebrahtuf@archmil.org, 414-526-0385

Mary Words, Chairperson of Black Catholic Ministry Commission
MWORDS@wi.rr.com, 414-416-1843



PILGRIMAGE TO THE SHRINE OF OUR LADY OF GOOD HOPE!

Join Auxiliary Bishop James Schuerman on a pilgrimage to the National Shrine of Our Lady of Good Hope in Champion, Wis., on Saturday, November 6, 2021, 8:30 am to 6 pm. Meet at the Cathedral of St. John the Evangelist, Milwaukee and then travel by luxury bus to the site where the Blessed Virgin appeared to Adele Brise in 1859. Includes prayer, rosary, confession, guided tours, and a private Mass celebrated by Bishop Schuerman.

Cost: \$75 and includes a box lunch. RSVP at 414-276-9814, ext. 306 or amynikolai@stjohncathedral.org.



Steve & Joyce BERGELIN
www.SteveandJoyceBergelin.com

REALTY EXECUTIVES
INTEGRITY
(262) 424-8753

TODD WANGERIN ELECTRIC, Inc.
Free Estimates - Licensed - Insured
Over 20 years experience
Todd Wangerin 262-719-4411
twelectric4411@att.net

www.hhortho.com
Holzauer, Hewett & Barta s.c.
Orthodontic Care For Children And Adults
Daniel Holzauer DDS MS | Charles Hewett DDS MS | Joshua Barta DDS MS
520 Hartbrook Dr., Hartland 262-567-7076
2316 N. Grandview Blvd, Waukesha 262-547-6365
10225 W. Capitol Dr., Wauwatosa 414-463-5700

Oconomowoc Landscape Supply & Garden Center
Landscaping Supplies • Annuals
Perennials • Trees & Shrubs
Increase your Homes Value Enjoy a Beautiful Landscaped Yard
262-567-1777
www.olandscape.com • Corner of K & 67 at bypass

Hartland Terrace Assisted Living
• RN Lead 24-Hour Elite Care Team
• Full Continuum of Care • Memory Care
• All Inclusive Pricing • Private Studios
• Family Centered Care Model
327 North Avenue • Hartland | 262-369-4391
www.hartlandterrace.com

Complete line of Hispanic & American Groceries.
We specialize in fresh corn tortillas, Mexican bakery and our famous El Rey Tostadita Chips.
Serving Milwaukee Since 1978
El Rey 916 S. Cass E. Chicago Dr. 414-943-1940
El Rey Family Market 3200 W. Chapman Ave. 414-541-5200
El Rey Plaza 3524 W. Sunbeam St. 414-943-1816
El Rey Food Mart 1020 W. Sunbeam St. 414-388-7786

Holzauer, Hewett & Barta s.c.
Orthodontic Care For Children And Adults
Daniel Holzauer DDS MS | Charles Hewett DDS MS | Joshua Barta DDS MS
520 Hartbrook Dr., Hartland 262-567-7076
2316 N. Grandview Blvd, Waukesha 262-547-6365
10225 W. Capitol Dr., Wauwatosa 414-463-5700

BUNZEL'S OLD FASHIONED MEAT MARKET
Fresh Custom Cut Choice Meats
Party Trays • Catering
Thank You For Supporting A Family Tradition
9015 W. BURLEIGH 873-7960
www.bunzelmeats.com

Pat's Heating & Air Conditioning
30 YEARS OF EXCELLENCE
Call to the experts
262-567-7499
OCONOMOWOC
www.patsheating.com

FOOT & ANKLE Associates of Wisconsin
Parish Member
Dr. Amy Galati
Call: (262) 542-3779
www.footandanklewi.com

FREE AD DESIGN
WITH PURCHASE OF THIS SPACE
CALL 800.950.9952

KOWAL INVESTMENT GROUP
The Retirement Specialists
Aaron T. Kowal, CFP®
W238N1660 Busse Rd., Ste. 100, Waukesha, WI 53188
262-522-4040
www.kowalinvestmentgroup.com

Call us to schedule your free, no obligation, financial check-up today.

Henry & Diane Barwinski, Co-Owners
ECHO LAWN
A Complete Lawn, Landscape, and Snow Removal Service
Milwaukee 414-462-6670
Lake Country 262-695-8152

NEVER MISS A BULLETIN !
Sign up to have our weekly parish bulletin emailed to you at www.parishesonline.com

WE'RE HIRING AD SALES EXECUTIVES
BE YOURSELF. BRING YOUR PASSION.
WORK WITH PURPOSE.
• Work-Life Balance • Paid Training
• Full-Time with Benefits • Some Travel
• Serve Your Community
Contact us at careers@4lpi.com
www.4lpi.com/careers

Hartland Family CHIROPRACTIC
211 Cottonwood Ave, Hartland (262) 367-7424
www.hartlandchiro.com
Dr. Hans Halaska

TOWN BANK
A WINTRUST COMMUNITY BANK
800-433-3076
www.townbank.us

R&R Insurance
Rick Kalscheuer Parish Member
800.566.7007 | MyKnowledgeBroker.com

support our ADVERTISERS

MICHAEL J. FINN S.C.
ATTORNEY AT LAW
PARISH MEMBER
262-367-8485
mjfinnsc@sbcglobal.net
163 E. Capitol Dr., Hartland, WI 53029

VS VISU-SEWER, INC.
262-695-2340
Professional Sewer Inspection, Maintenance and Rehabilitation Services
Parish Members
www.visu-sewer.com

DON CULL EXCAVATING
W298 N9248 Center Oak Rd
Septic & Mound Systems Grading
966-7038
MPRS 221589

support our ADVERTISERS

CHARLES School
St. Charles School... We choose Christ in learning, living, & values in the light of our faith.
262-367-2040
www.stcharlesschoolhartland.com

JENSON MOTORS Auto - Truck Repair
Hours: Mon-Fri 7:30-5:30
Proprietor: Guy Jenson
262-367-5556
364 Cottonwood Ave., Hartland, WI

SUPPORT OUR ADVERTISERS!

We've Missed You!
Welcome Back to Mass
Stay connected to our faith community no matter where you are by signing up to get our bulletin delivered straight to your email.
www.ParishesOnline.com

AVAILABLE FOR A LIMITED TIME!
ADVERTISE HERE NOW!
Contact **Jeff Tkachuk** to place an ad today! jtkachuk@4LPi.com
or (800) 950-9952 x2513

KLINK'S KARPETS, INC
Hartland's Floor Covering Center
Family Owned & Operated for over 47 Years
Carpeting & Hard Surfaces
107 North Ave. Hartland, WI
367-4670 Parish Member

SPRUNG ARMSTRONG AIR
Heating, Sheet Metal & Well Pump Service
7024 Main St., Merton
538-1400
Service • Repair & New Construction
Residential & Commercial
Parish Members

Lake Country Eye Care
520 Hartbrook Dr. • Hartland, WI 53029
Amber A. Dentz, OD - Parishioner
www.lakecountryeyecare.com
262-367-6610

DAVE PERRY
www.heatingcooling.com
Proudly Serving the Lake Country Area for more than 20 years
Heating • Air Conditioning • Geothermal
New Construction • Replacement
262.966.1959
www.daveperryheatingandcooling.com

Generations DENTAL
Jim Muenzinger, D.D.S. and Kelly Muenzinger, D.D.S.
Parish Members
107 E. Capitol Dr. Hartland, WI 53029
Office 262-367-2928
Evening hours: 262-367-2928

Palmer's STEAKHOUSE
 www.Palmerssteakhouse.com
 122 E. Capitol Dr. • Hartland, WI
 262-369-3939

Bob Hamilton
 207 E. CAPITOL DRIVE • HARTLAND, WI 53029
 262.367.2312
 BHAMILTO@emfom.com

The Mobile Repair Guys
 "Your small engine maintenance & repair specialists"
Small Engine Maintenance and Repair
Specializing in Lawn Mowers & Snow Blowers
WE COME TO YOU AT NO EXTRA COST
414-617-3490

Lake Country Home Realty
Jim Lotz
 262.312.8603
 Jim@LakeCountryHomeRealty.com
 www.LakeCountryHomeRealty.com

REICHL & KOLSTAD ORTHODONTICS
 Dr. Peter Reichl & Dr. James Kolstad
look forward to meeting you!
 Offering Traditional Braces & Invisalign
 Located in Waukesha, Mukwonago & Hartland
262-547-2827
 www.ReichlKolstadOrtho.com

UnitedDrivingSchoolWI.com
ENROLL TODAY!

Wolf Electric LLC
 Commercial, Industrial, Residential
Garrett Wolf • Master Electrician/Parishioner
 Commercial • Industrial • Residential
 (262) 224-7310 • www.wolfelectricllc.com

It's Time to Travel Again!
CZ Travel
 Kristin Walsh
 kristinczw@icloud.com
 www.CZtravel.org

What Will Be Your Legacy?
 If you value your faith and your family, I welcome the opportunity to share my faith-based perspective in union with my financial experience in order to co-create a personal legacy strategy. I can assist with: Portfolio Management | Retirement Planning | Financial & Legacy Strategies | Special Needs Planning

CARPET PLUS, INC.
We Bring the Showroom to You!
(414) 573-0105
 Proudly Serving Crusader Nation for over 20 years!
Dan Taylor, Parish Member

WEALTHSPIRE ADVISORS
Brion Collins
 CFP® Professional & Parishioner
 262.326.6090 | www.wealthspire.com
 We salute the St. Charles community and all who make such a profound difference.

Kurt Maltby, CFP®, CHSNC®
 CERTIFIED FINANCIAL PLANNER™
 Associate Vice President, Financial Advisor
Morgan Stanley
 20975 Swenson Drive, Waukesha
 Phone: (262) 523-8303 | NMLS # 1504808
 advisor.morganstanley.com/the-riverwood-wealth-management-group

EVERETT-LUKO FUNERAL HOME
 262-367-5505
PASSAGES
 Cremation Services

COURI INSURANCE AGENCY
Protection for the Unexpected™
Coverages IMPORTANT Pricing IMPORTANT Low Costs GREAT COVERAGES
Jerry & Judie Couri
262-548-8077 • couri.com

H+P CERTIFIED PUBLIC ACCOUNTANTS
 Mark G. Hayes, CPA
 262-367-5505 • 262-367-0545 Fax
 365 Cottonwood Ave., Suite A • Hartland, WI 53029
 mark@hpcpa.tax • www.hpcpa.tax

ADT-Monitored Home Security
 Get 24-Hour Protection From a Name You Can Trust
 Burglary • Flood Detection • Fire Safety • Carbon Monoxide
 1-855-225-4251

Emanuele & Haut, CPAs, SC
 Certified Public Accountants
 Emanuele-Haut certified public accountants
 142 E. Capitol Dr. Hartland, WI
 Parish Member
 262.367.1040
 sam@ehcpas.com

SPORTS GRILL
 PIZZA • FRIDAY FISH FRY • SANDWICHES
 *\$5.00 OFF ANY 16" PIZZA
 *SUNDAY'S "KIDS EAT FREE" WITH ADULT PURCHASE
 We do Parties & Catering!
 Not valid with any other offers or coupons
369-0079
 300 COTTONWOOD • HARTLAND
 PARISH MEMBER

Integré Professional Services
 Your Home Improvement & Home Repair Needs
 Michael Hall 262-239-5052 cell
 integrep@icloud.com

DUNN INVESTMENT MANAGEMENT GROUP
 of RBC Wealth Management
James P. Dunn
 Managing Director - Financial Advisor
 Senior Portfolio Manager - Portfolio Focus
 18500 West Corporate Drive, Ste. 100
 Brookfield, WI 53045
 Call (262) 395-1101 for an appointment
 james.dunn@rbc.com
 • Customized portfolio management & investment consulting for individuals & institutions
 • Comprehensive investment advice & retirement planning
 • Recently retired or changed jobs?
 Providing specialized 401K rollover solutions
 A Division of RBC Capital Markets LLC NYSE/FINRA/SIPC

PAUN Construction
 Specializing in Masonry Residential & Commercial
 W300 N7741 Christine Ln., Hartland, WI 53029
Robert J. Paun (262) 326-8043
 www.paunconstruction.com
 mail@paunconstruction.com

Vicki Marciniak
 When it comes to your home, it's more than just business, it's personal.
Cell: (414) 243-5584
 vmarciniak@firstweber.com
 www.VickiMarciniak.FirstWeber.com

SUPPORT OUR ADVERTISERS!

AVAILABLE FOR A LIMITED TIME!
ADVERTISE HERE NOW!
 Contact **Jeff Tkachuk** to place an ad today!
 jtkachuk@4LPI.com or (800) 950-9952 x2513

GOOD TIMES DAY CAMP
 262-521-8100 • WWW.GOODTIMESWI.COM
 Where happiness and wonderment come to play!
 • Now Enrolling Ages 3 - 15
 • 15 Acres & 2 Heated Pools
 • Many Athletic Fields
 • Swimming Lessons Included
 • Field Trips Included
 • Bussing to/from Hartland
 • Bussing to/from Brookfield
 • Worry Free Scheduling
 • Low Ratio's
 • Accepting Counselor Applications
 Where challenges are met, goals are accomplished, and friendships and memories made last a lifetime!

FRONTIER TITLE & CLOSING SERVICES
 1130 James Drive, Hartland, WI 53029
 Office: 262-361-4466 Fax: 262-361-4462
 www.frontiertitlellc.com
 Frontier Title & Closing Services, LLC
 Lake Country's Most Experienced Title & Closing Company
 Specializing in Residential, Commercial & New Construction Transactions
 Serving the Real Estate Community!

NELCO ELECTRIC, INC.
 GERMANTOWN, WI
 Commercial • Industrial • Residential
 24 Hour Service 262-502-9950
 WWW.NELCOELECTRIC.COM
 Barb Jarchow Parishioner

zimmerman ARCHITECTURAL STUDIOS, INC.
 200 West Hill View Avenue
 Milwaukee, WI 53227 | zimmerman.com
 PHOENIX (480) 438-8244
 PORTLAND (503) 438-8244

Lifetime Door Co
 GARAGE DOORS • DOOR OPENERS • REPAIRED OR REPLACED
 SALES • SERVICE • INSTALLATION
262-567-9203

FRONTIER TITLE & CLOSING SERVICES
 1130 James Drive, Hartland, WI 53029
 Office: 262-361-4466 Fax: 262-361-4462
 www.frontiertitlellc.com
 Frontier Title & Closing Services, LLC
 Lake Country's Most Experienced Title & Closing Company
 Specializing in Residential, Commercial & New Construction Transactions
 Serving the Real Estate Community!