



*At St. Charles, all are invited to  
meet Christ, know Christ,  
love Christ and serve Christ.*

**June 13, 2021**

**ELEVENTH SUNDAY IN ORDINARY TIME**

# You're Invited!

## CEREMONIAL GROUNDBREAKING OF OUR NEW CHURCH

Archbishop ListECKi will be joining Fr. Ken and the parish leadership TODAY after the 11 am Mass (around 12:15pm) for a Ceremonial Groundbreaking of our new church! All are welcome to gather on the northeast corner of the campus as the Archbishop puts the "first" shovel in the ground and leads us in our new Cornerstone Prayer. St. Charles Borromeo, pray for us!



**THE CORNERSTONE PROJECT**  
*Answering Christ's Call*



313 Circle Drive, Hartland, WI 53029 • 262-367-0800  
[www.stcharleshartland.com](http://www.stcharleshartland.com) • email: [parish@stcharleshartland.com](mailto:parish@stcharleshartland.com)



# WELCOME TO ST. CHARLES - WE ARE HERE FOR YOU



PASTOR  
Fr. Ken Omernick



ASSOCIATE PASTOR  
Fr. Nick Baumgardner



PERMANENT DEACON  
Rob Mitchell

## ST. CHARLES STAFF TEAMS

### TEACHING PARISH SEMINARIANS:

Robert Ross, [ross@sfs.edu](mailto:ross@sfs.edu)

David Sweeney, [dsweeney@sfs.edu](mailto:dsweeney@sfs.edu)

### SCHOOL TEAM 262-367-2040

Principal/Team Lead: Dan Garvey, Ext. 208,  
[dgarvey@stcharleshartland.org](mailto:dgarvey@stcharleshartland.org)

Advancement Officer: Allison Caswell, Ext. 227,  
[acaswell@stcharleshartland.org](mailto:acaswell@stcharleshartland.org)

School Administrative: Lisa Moehrke, Ext. 206,  
[school@stcharleshartland.com](mailto:school@stcharleshartland.com)

School Administrative: Karen Dejewski, Ext. 206,  
[school@stcharleshartland.com](mailto:school@stcharleshartland.com)

### DISCIPLESHIP TEAM

Associate Pastor/Team Lead: Fr. Nick Baumgardner,  
[nbaumgardner@stcharleshartland.org](mailto:nbaumgardner@stcharleshartland.org)

Adult Small Groups: Maria Notch, Ext. 220,  
[mnotch@stcharleshartland.org](mailto:mnotch@stcharleshartland.org)

Children's Discipleship: Alicia Van Hecke, Ext. 205,  
[avanhecke@stcharleshartland.org](mailto:avanhecke@stcharleshartland.org)

Student Discipleship Lead: Nick Scanlan, Ext. 209,  
[nscanlan@stcharleshartland.org](mailto:nscanlan@stcharleshartland.org)

Student Discipleship Co-lead: Rachel Heffron, Ext. 221,  
[rheffron@stcharleshartland.org](mailto:rheffron@stcharleshartland.org)

Discipleship/Administrative: Trish Gilchrist, Ext. 230,  
[tgilchrist@stcharleshartland.org](mailto:tgilchrist@stcharleshartland.org)

### OPERATIONS TEAM

Operations Manager/Team Lead: Marge Beck, Ext. 201,  
[mbeck@stcharleshartland.org](mailto:mbeck@stcharleshartland.org)

Facilities Manager: Mike Cattani, Ext. 210,  
[mcattani@stcharleshartland.org](mailto:mcattani@stcharleshartland.org)

Maintenance Manager: Tim Orzechowski, Ext. 217,  
[torzechowski@stcharleshartland.org](mailto:torzechowski@stcharleshartland.org)

Bookkeeping Specialist: Dee Anne Hamer, Ext. 200,  
[dhamer@stcharleshartland.org](mailto:dhamer@stcharleshartland.org)

Cornerstone/Safeguarding: Karen Dejewski,  
[cornerstoneproject@stcharleshartland.org](mailto:cornerstoneproject@stcharleshartland.org)

### WORSHIP TEAM

Worship Lead: Peg Kasun, Ext. 225,  
[pkasun@stcharleshartland.org](mailto:pkasun@stcharleshartland.org)

Deacon: Deacon Rob Mitchell,  
[rmitchell@stcharleshartland.org](mailto:rmitchell@stcharleshartland.org)

Liturgist : Elizabeth Thompson, M.Div., 262-367-6704  
[ethompson@stcharleshartland.org](mailto:ethompson@stcharleshartland.org)

Musician: Scott Currier, Ext. 225,  
[scurrier@stcharleshartland.org](mailto:scurrier@stcharleshartland.org)

Wedding Coordinator: Dee Anne Hamer, Ext. 222,  
[dhamer@stcharleshartland.org](mailto:dhamer@stcharleshartland.org)

### COMMUNICATION & STEWARDSHIP TEAM

Assist. to the Pastor/Team Lead: Terrie Carew, Ext. 224,  
[tcarew@stcharleshartland.org](mailto:tcarew@stcharleshartland.org)

Communications Coordinator: Allison Caswell, Ext. 215,  
[acaswell@stcharleshartland.org](mailto:acaswell@stcharleshartland.org)

Graphic Design Specialist: Renee Krier, Ext. 224,  
[rkrier@stcharleshartland.org](mailto:rkrier@stcharleshartland.org)

Welcome Receptionist: TBD

Parishioner Engagement: Nancy Neuser,  
[nneuser@stcharleshartland.org](mailto:nneuser@stcharleshartland.org)

Administrative: Kathy Gillstrom, Ext. 200,  
[kgillstrom@stcharleshartland.org](mailto:kgillstrom@stcharleshartland.org)

PARISH OFFICE: 262-367-0800,  
Mon. - Fri., 8 am - 4 pm

EMAIL US: [parish@stcharleshartland.org](mailto:parish@stcharleshartland.org)

WEBSITE & LIVESTREAM: [www.stcharleshartland.com](http://www.stcharleshartland.com)

PARISH SCHOOL: 262-367-2040,  
[school@stcharleshartland.com](mailto:school@stcharleshartland.com)



# WELCOME TO ST. CHARLES - WE ARE HERE FOR YOU

SATURDAY MASS OF ANTICIPATION: 5:00pm

SUNDAY MASS TIMES: 7:00am, 9:00am, 11:00am & 6:00pm

WEEKDAY MASS: Monday - Friday: 8:30am & Saturday: 8:30am  
**(Starting June 14, all weekday Masses return to 8:30 am)**

TUESDAY TRADITIONAL MASS

Monthly on the fourth Tuesday at 5:30 pm

EUCCHARISTIC ADORATION

Mondays: 5:00-7:00pm with closing prayer (includes music)

Tuesdays: 6:30-8:00pm with 7:30pm Rosary and closing prayer

Fridays: 9:00am-3:00pm with the Divine Mercy Chaplet at 3:00pm followed by Benediction

RECONCILIATION

Saturdays: 3:30pm - 4:30pm & Thursdays: 5:00pm - 6:00pm or by appointment (schedule by calling the Parish Office).

SACRAMENT OF THE SICK

By appointment with Fr. Ken or Fr. Nick (schedule by calling the Parish Office).

ANOINTING MASSES: 2nd & 4th Fridays every month at 8:30 am

WE ARE HERE TO HELP YOU WITH:

- JOINING OUR PARISH
- PLANNING A WEDDING
- EXPECTING, ADOPTING OR A BIRTH OF A CHILD
- BECOMING FULLY CATHOLIC
- JOINING A SMALL GROUP

For help with any of these areas please contact the Parish Office at 262-367-0800 or [parish@stcharleshartland.org](mailto:parish@stcharleshartland.org).

OUTREACH SERVICES TEAM: Terri Blazek: 262-367-7608, [jtblazek@wi.rr.com](mailto:jtblazek@wi.rr.com)

TO ASK FOR PRAYERS or to be added to the email list, please email: [prayernetwork@stcharleshartland.org](mailto:prayernetwork@stcharleshartland.org)

FOR EMERGENCY PRAYERS, please email: [emergencyprayers@stcharleshartland.org](mailto:emergencyprayers@stcharleshartland.org)

ST. VINCENT DE PAUL: if you need food, shelter or assistance call 262-367-0800 (Parish Office)

NEED HOME COMMUNION:

For information call 262-367-0800 (Parish Office)

## Mass Intentions for the Week of June 13th



### Sunday, June 13

7:00 am † Dr. Gerald Dorff  
9:00 am † Ervin Wunsch & Anton Hallada  
11:00 am † Brian Gillstrom  
6:00 pm † Jim & Mary McLoone

### Monday, June 14

8:30 am † Patrica E. Dunn

### Tuesday, June 15

8:30 am † Ed & Eunice Kollross

### Wednesday, June 16

8:30 am † Richard Geason

### Thursday, June 17

8:30 am † Barbara Cramlet

### Friday, June 18

8:30 am † Sara Straszewski

### Saturday, June 19

8:30 am † Robert Rydzewski  
5:00 pm Living and Deceased Members of Wenstrom & Marzo Families

### Sunday, June 20 ~ Father's Day

7:00 am Living and Deceased Members of St. Charles  
9:00 am † Jeff (Boo) Boerger  
11:00 am † Lewis Wolf  
6:00 pm No Mass



## Wedding Banns

3rd Bann ~ Megan Bizub & Sean Berendes

3rd Bann ~ Mariah Thimm & Nicholas Schimborski

Please pray for the repose of the souls of

**Carmen Herzberg & Agatha Ulrich**

May their souls and the souls of all the faithful departed  
REST IN CHRIST'S PEACE.

## Bulletin Advertisers of the Week

Please support our advertisers!

**CARPET PLUS, INC.**

We Bring the Showroom to You!

(414) 573-0105

Dan Taylor, Parish Member



**Wolf Electric LLC**

Commercial • Industrial • Residential

Garrett Wolf

Master Electrician/Parishioner

Commercial • Industrial • Residential

(414) 899-3508 • [www.wolfelectricllc.com](http://www.wolfelectricllc.com)



*11<sup>th</sup> Sunday*  
**IN ORDINARY TIME**

"To what shall we compare the kingdom of God? It is like a mustard seed ... once it is sown, it springs up and becomes the largest of plants." - Mk 4:30a, 31a, 32



THIS WEEKEND'S GOSPEL MEDITATION

ELEVENTH SUNDAY IN ORDINARY TIME

A favorite motto of St. Teresa of Calcutta was, “do small things with great love.” This is how it works in the kingdom of God. God can do tremendous things with the smallest gesture, especially when it is done in love. We can clearly see that our world is suffering greatly. People are struggling to find peace, navigate through conflicts, earn a sustainable living, find security and enough food to eat, and work through political tensions and conflicts. In the light of the magnitude of the difficulties that exist around us and even within us, we can find ourselves floundering to discover practical, effective solutions. How can something so large be helped by someone as small and seemingly insignificant as me? While whole systems and structures may be out of the league of our personal influence, are we really that helpless in the midst of all of the turmoil, sadness, and suffering?

If we believe that God is with us and that God is still working to bring about the glory of God's kingdom, then the answer is no. We are never helpless or without hope. Armed with a strong life of prayer, we can always flee to God and ask for inspiration, wisdom, and especially love. We are all blessed with unique gifts and talents, and it often seems that considering all that the world lacks, love and charity remain at the top of the list. Life can easily become a battleground of hostility. Because life is challenging and difficult, anger is not far away. We see it on people's faces and hear it in their voices. There is a measure of frustration that permeates all avenues of life. It is even felt in the air.

As people of faith, we know that what we see here is not the end but only a part of something far greater to come. We know that God's kingdom is where we are ultimately meant to be, and the Gospel is the way to get there. If love and charity can prevail in us, then God will be able to do what God does best. God will use us to scatter the seeds of his kingdom. Through our small gestures, those seeds can receive the nurturing attention that is necessary for them to bear great fruit. We cannot fall victim to the strife that is around us. We have to keep ourselves refreshed and focused so that even in small ways, we can become part of the solution, not the problem. Love and charity, which come from God, can help to heal the ills of the world. May we bring these simple gifts to the everyday simple tasks of our lives! Watch how big the plant grows! ©LPi



15 minutes each day spent in God's presence – reading, reflecting, responding and resting with his Word – adds up to 90 hours in one year. That is time well spent and a testimony to how a little at a time turns into something remarkable!

Reflection questions for Sunday, June 20th



- Much of the book of Job addresses the mystery of suffering and God's role in human affairs. Today we hear part of God's response to Job's questioning with images of the sea and raging waters, representing God's power and omniscience. What helps remind you it is God who governs the universe with purpose and fidelity?
- Paul encouraged the Corinthians to have the conviction of faith that since Christ died for all, believers should now live for him. In doing so, we become a “new creation.” How have you seen this happen in your life as a person of faith?
- Early in their following of Jesus, the disciples' witness of the miracle of Jesus calming the storm at sea led them to ask: “Who then is this whom even wind and sea obey?” How would you explain to others who wonder about the divinity of Jesus?

Readings for the Week of June 13th

- Sunday:** Ez 17:22-24/Ps 92:2-3, 13-14, 15-16 [cf. 2a]/2 Cor 5:6-10/Mk 4:26-34
- Monday:** 2 Cor 6:1-10/Ps 98:1, 2b, 3ab, 3cd-4 [2a]/Mt 5:38-42
- Tuesday:** 2 Cor 8:1-9/Ps 146:2, 5-6ab, 6c-7, 8-9a [1b]/Mt 5:43-48
- Wednesday:** 2 Cor 9:6-11/Ps 112:1bc-2, 3-4, 9 [1b]/Mt 6:1-6, 16-18
- Thursday:** 2 Cor 11:1-11/Ps 111:1b-2, 3-4, 7-8 [7a]/Mt 6:7-15
- Friday:** 2 Cor 11:18, 21-30/Ps 34:2-3, 4-5, 6-7 [cf. 18b]/Mt 6:19-23
- Saturday:** 2 Cor 12:1-10/Ps 34:8-9, 10-11, 12-13 [9a]/Mt 6:24-34
- Next Sunday:** Jb 38:1, 8-11/ Ps 107:23-24, 25-26, 28-29, 30-31 [1b]/2 Cor 5:14-17/Mk 4:35-41



READ. REFLECT. RESPOND. REST.

Cut out and keep in your Bible for reference!

LIVE THE LITURGY  
INSPIRATION FOR THE WEEK

Jesus compares the Kingdom of God to a mustard seed, the tiniest of seeds. When planted, the tiny mustard seed grows into a tremendous tree with large branches. So too in each of our lives small things can have profound effects. God can use one of our more insignificant gestures to radically change another person's life. It may be the kindness of a smile, our willingness to accommodate someone, listening to someone's story, helping someone who is hurting, standing up for someone who is right or complimenting someone on something they did. We all have God-given gifts and talents. What are some of yours? Our task is to use our talents creatively, consistently, lovingly, and generously. Because we are always guided by the Holy Spirit, things that may be insignificant or unnoticed to us can profoundly change the life of someone else. While we may think we are small and insignificant, God can make us large and magnificent. All we have to do is open ourselves to being used. We trust that God will take care of the rest. ©LPi

EVERYDAY STEWARDSHIP - RECOGNIZE  
GOD IN YOUR ORDINARY MOMENTS

**St. Anthony Can Find Anything — Even You**

*“Tony, Tony, come around! Something is lost and it must be found.”*

Did you learn this one when you were a kid? In my experience there are even a lot of lapsed Catholics — or people who were never Catholic at all — who know that when you lose something, St. Anthony becomes your best friend. Missing keys? Pray to St. Anthony. Can't find your favorite sweater? St. Anthony. Forget where you parked your car in the mall lot? St. Anth— okay, you get the idea. Whatever it is, large or small, important or trivial, Tony has a reputation for finding the lost things.

It's a devotion that can seem a little like superstition — witchcraft, even? — if you don't really understand it. Mumble an incantation to a dead guy and you're guaranteed to find your sunglasses. But as with most traditions that are old, beloved and effective, looking a little closer reveals the truth of the matter.

When we lose something really important, what do we do? We make the whole household stop what they're doing to join the search. Having St. Anthony as a friend means you ask him to stop what he's doing to help, too. And how he helps is by taking the matter exactly where all matters need to go — straight to the feet of Christ.

Here's the real genius of St Anthony: he takes the most mundane, commonplace occurrence — misplacing socks — into an encounter with the divine, and truly all things great and small are gifts from God. He grabs our hand and points to the cross. “That's what you're looking for,” he tells us.

In the end, Tony doesn't really find the lost things. He finds the lost people. — Tracy Earl Welliver, MTS ©LPi



ST. CHARLES SHOWCASED  
IN NATIONAL CATHOLIC  
REGISTER

The Register interviewed the St. Charles Worship Team Lead, Peg Kasun, about what it looks like as parishes begin to open up from the pandemic. Parishes want to make sure that all feel welcome and safe in coming back to Mass. We know many St. Charles parishioners were eager and hungry for the Eucharist and in-person Mass.

Peg was quoted in the May 16 article that at St. Charles “we want them to have a heart for worship and a heart for God. That's really what we're trying to cultivate here.”

To see the interview in it's entirety, please visit <https://www.ncregister.com/news/as-pentecost-nears-catholics-come-home-to-sunday-mass>.

PARKING UPDATE - WEST PARKING LOT

On **Monday, June 14**, work will begin on the west parking lot, and parking will not be available in this lot during the summer. The lot will open up again at the beginning of the 2021-22 school year. **Hartland North** has graciously made their parking lot (off of Nixon Avenue) available to us. [Enter the Renson Road \(School\) doors to get to Mass.](#) This is a great opportunity for those looking to get or increase their daily step count! Thank you.



NEW UPDATES TO ST. CHARLES' MASSES

- **Masks and social distancing are optional** at all daily and weekend Masses, including the 5pm and 7am. We appreciate your support as we make everyone feel comfortable in coming to Mass. All our Masses will continue to be livestreamed for those who are unable to come in person.
- **Anointing of the Sick within Mass** is now available on the second and fourth Fridays of every month.
- **Starting June 14, the daily Mass will return to 8:30am.**

Thank you for all your patience as we work through our Catholic Comeback plan and new church construction.

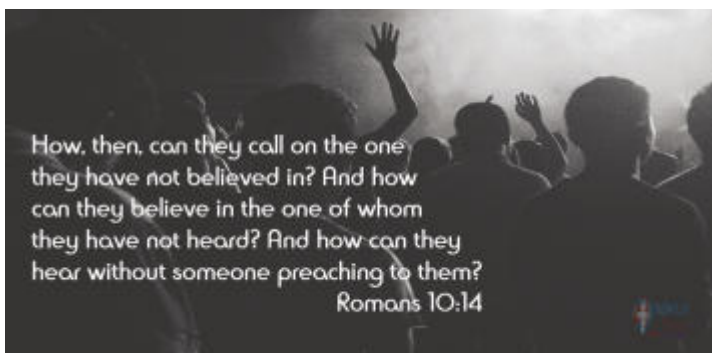
**Faith Formation at St. Charles for All Grades  
Register Today for the 2021-2022 School Year**

Registration for Children's Discipleship and Lake Country Life Teen for the 2021-2022 academic year is now open! Children's Discipleship includes children going into Pre-K through 5th grade as well as those preparing for First Reconciliation and First Communion. Lake Country Life Teen includes middle and high school ministries for 6th-12th grade students. Registration for Confirmation is also open. **Please see the parish website 'News' story or click on the boxes (below) on the home page for more information and links to register.**



**SUMMER  
connect**

Beginning June 16, Lake Country Life Teen is offering a new evening event this summer called Summer Connect. The night will center around a Holy Hour and Praise and Worship with Middle school activities taking place before the Holy Hour and high school activities immediately following. You won't want to miss Capture the Flag, dodgeball, talent shows, Nerf Wars, and other exciting activities. Parishioners of all ages are invited to attend the Holy Hour also. Visit lakecountrylifeteen.com and click on the Summer Connect banner for more details.



**CONGRATULATIONS!**

St. Charles would like to congratulate ALL parish 8th and 12th graders and college graduates as they transition to their next step in life. Many blessing to them and their families.



**CALLING ALL COLLEGE STUDENTS!**

Are you a college student, home for the summer, and looking for friends to connect with? This Summer, St. Charles is offering a "College Age Small Group" for guys and gals 18-23 years old. The group will meet Wednesday nights throughout the summer for bonfires, discussion, and prayer at a parishioner's home. For more information or to sign up, contact Maria Notch, Adult Small Group Coordinator, at [mnotch@stcharleshartland.org](mailto:mnotch@stcharleshartland.org). We hope you'll take advantage of this opportunity to "Get On Fire" with your faith!



**ATHLETICS' REGISTRATION IS  
NOW OPEN FOR THE  
2021-2022 SCHOOL YEAR!  
Registration until June 18th**

**Open to all St. Charles Parish & School Members!**

Milwaukee Archdiocese announced that leagues have been authorized to begin their planning process and parishes given the go ahead to begin registration for a full fall athletics season. Registration for Volleyball, Basketball, Cheerleading, Cross Country and Track & Field is now open. Also both the Metro Volleyball Conference and Parkview Parochial League have begun planning for next season, and we will need to have our team commitments ready by July 1.

- Volleyball teams will cap at 12 players. Waitlist after cap met.
- Basketball teams will cap at 10 players. Waitlist after cap met.
- Tentatively, Volleyball Tryouts if necessary will be August 9 & 10.
- Tentatively, Volleyball Practices will begin the week of August 16.

TO REGISTER, visit <https://athletics.stcharleshartland.com/page/athletics-registration>. GO CRUSADERS!

Questions? Contact John Grogan, St. Charles Co-Athletic Director and Volleyball Coordinator, at 414-704-6998 or [crusadervb@gmail.com](mailto:crusadervb@gmail.com)

# STEWARDSHIP (TIME, TALENT AND TREASURE) - THE GIFT OF GIVING



## 2021 CURBSIDE SPONSOR & DONATIONS

With all of the excitement around our groundbreaking year and building the new church, we are also excited to bring back the very successful St. Charles

Curbside & Grand Raffle for one more year while we navigate the new church construction.

On Sunday, September 12th from 10am-2pm, we will offer our favorite Fall Fest items and a few new surprises this year that will remind us of Fall Fest, bring our parish community together and continue to support our parish missions. As we did last year, we will not be offering sponsorship levels but we are asking that you give what you can to make our event and Grand Raffle a success. Visit our website to donate today!

Your sponsorship or donation will include your company logo and/or family name on:

- All marketing materials (such as announcements, newsletters and parish bulletins)
- Curbside & Grand Raffle Posters
- Day of Signage
- Curbside Bags & Dinner Buckets
- St. Charles Website and Facebook page

Again, we can't do this without you, and as always, we are truly blessed and grateful for your generous support. Please feel free to contact Jill Preis Herkowski at 262-510-6013 directly with any questions about 2021 Curbside or complete the 2021 Curbside Sponsor & Donation Form and join us today!

## NEW PARISHIONER REGISTRATION NOW ONLINE!

If you would like to join our parish community, we welcome you! We have made it easier to join via an online registration form! The form is easy to find on our website. Just scroll down on the home page and click on the red box on the left side.

Someone from our welcome team will contact you after you submit this form. If you do not have access to a computer, stop by the parish office and we would be happy to help you.

## ST. VINCENT de PAUL SOCIETY



### FOOD PANTRY NEEDS: cleaning supplies, pasta or rice sides (not chicken), mustard

Your support of the ministry of St. Vincent de Paul sows seeds that help those in need and touch many hearts. Your support of the St. Charles' food pantry helps to feed those who hunger. Your financial aid helps provide shelter and clothing to those in need. Your purchases at the SVdP retail stores fund the many outreach programs SVdP offers for the poor in our community. God bless you for sowing seeds to help us help others.

The food pantry is located at 229 Lawn Street, Hartland. Morning hours are Tuesdays between 10 am and noon. Evening hours are on the second and fourth Tuesday of the month between 5:30 PM and 7 PM. If you need assistance or are interested in learning more about our ministry of serving the poor and needy, please contact SVdP at 262-367-0800.

*The power of the wish*



We're celebrating our 20<sup>th</sup> anniversary by giving your parish the opportunity to win one of five special

**\$20,000 awards!**

Submit an idea to your pastor/administrator/parish director for something outside your normal budget or current programs. What's on your parish "wish list"?

[legaciesoffaith.org](http://legaciesoffaith.org)

Please email the parish office at [parish@stcharleshartland.com](mailto:parish@stcharleshartland.com) or call 262-367-0800 with your idea.



### PARISH SUPPORT FOR THE WEEKEND OF MAY 2ND

FISCAL YEAR BEGAN JULY 1ST

### 2020-2021

Envelopes.....	\$23,805.50
Offertory.....	\$1,456.87
Weekend Total.....	\$25,262.37
E-Giving.....	\$16,541.25
YTD.....	\$1,935,334.24

### 2019-2020

Envelopes.....	\$29,441.00
Offertory.....	\$20.35
Weekend Total.....	\$29,461.35
E-Giving.....	\$13,970.60
YTD.....	\$1,729,623.56



THE 2020-2021 SCHOOL YEAR WAS ONE FOR THE BOOKS!

Thank you to all of the staff, students, and families who stuck with us throughout this challenging year and made it extraordinary! We are so appreciative of your support and are blessed to be #stcharlesstrong!

**Field Day:** We had an amazing Field Day at the end of May! The weather was absolutely perfect, our students did an awesome job, and everyone had a blast! It was wonderful to see so many smiling faces and listen to laughter all day long! Thank you to Mrs. Supple for planning a stellar Field Day, and thank you to Mr. Maltch for his work in getting all of the games organized and set up. Major shout-out to our parents and even some of our former parents who helped out by running the different games, grilling hotdogs, and setting up/cleaning up lunch. Also, many thanks to our 8th graders for sponsoring the Kona Ice truck! Additionally, a huge thank you to Mr. Jungbluth for helping make HABA Field available for our kickball and softball games as well as the many treats he provided for our kiddos!

**Middle-School Retreats:** Our 6th-8th Grade students participated in retreats throughout May! It was a wonderful opportunity for them to pray together, complete activities in teams, and get to know each other even better. Thank you to Mrs. Supple for organizing these special retreat days for our students!

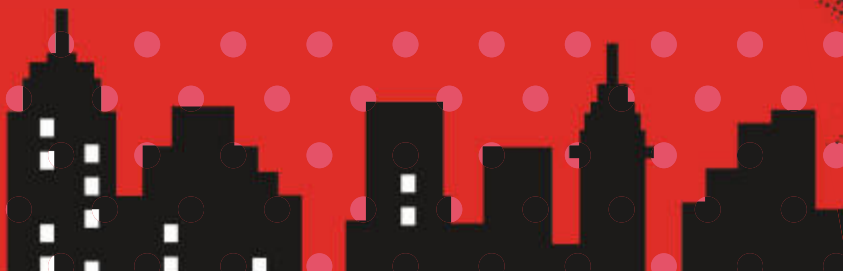
**8th Grade Graduation:** We'd like to congratulate our Class of 2021! We are so proud of you and will miss seeing you at school next year. God's blessings to you as you continue on to high school in Fall!

**Annual Development Fund:** We would like to extend a special thank you to everyone who donated to our Annual Development Fund (ADF) throughout this school year! We are pleased to announce that we hit our goal of \$50,000 and have raised \$50,400 so far. We are incredibly grateful for your support of our school, and our students and staff wish you many blessings!

If you haven't had a chance to donate yet and would like to help support our school for the 2021-2022 school year, it's not too late! Please visit our school webpage and click on the Donate tab at the top for more information about the ADF.



**SUPER SCHOOL!**

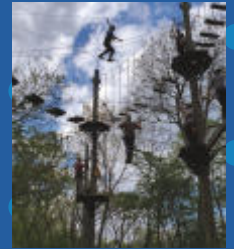




**6TH GRADE  
RETREAT**



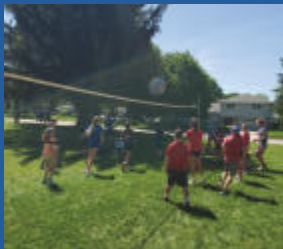
**8TH GRADE  
RETREAT**



**8TH GRADE  
LAST DAYS**



**FIELD DAY  
FUN**





**MENOMONEE FALLS VILLAGE PARK**  
 N87W16749 Garfield Dr,  
 Menomonee Falls, WI 53051

*Pre-Registration*  
**\$20/FAMILY**  
 MAY 1<sup>ST</sup>-JULY 20<sup>TH</sup>  
 REGISTER AT: [ARISEMKE.ORG](http://ARISEMKE.ORG)

*Schedule*  
**3:30-6:00 PM**  
**ACTIVITIES FOR FAMILIES**  
 Visit with Archbishop Listeck and Socialize with Priests, Seminarians & Religious Sisters!  
 Bounce House, Magician, Face Painting, Balloon Animals, Snow Cones & Popcorn

**6:00-7:00 PM**  
 BYO Picnic Dinner

**7:00-8:30 PM**  
 Arise Saturday Night  
 FREE & Open to the public



**SCHOENSTATT GIRLS SUMMER CAMPS 2021**

**Summer Camps for girls ages 9-12**  
 June 14-17, 2021  
 June 28-July 1, 2021  
 June 12

**Summer Camps for girls ages 12-14**  
 June 21-24, 2021  
 July 12-15, 2021  
 July 10

This year there will be no overnight summer camps. The week camps will be a series of day camps from Monday - Thursday, 9:00 am - 5:00 pm each day.

To Register, Contact: Sr. M. Faustina, [versacrumpatris@gmail.com](mailto:versacrumpatris@gmail.com) or 262-522-4323

To register online for a summer camp, visit <https://schoenstatt-wisconsin.us/events/>



**CELEBRATING 100 YEARS OF WOMEN IN SCHOENSTATT**

Come and join us in celebrating the 100th Anniversary of Women in Schoenstatt on Saturday, June 26 from 9 a.m. to 5 p.m. This event is for all women ages 25 and up and will include Holy Mass, historical information about women in Schoenstatt and keynote presentation by Julia Monnin speaking on "A Walk With Mary on the Road of Authentic Womanhood."

Cost is \$40 per person and registration is open until June 21 at <http://schoenstattwisconsin.org/registration-online/> or call 262-522-4322. The event will be held at the International Schoenstatt Center, W284 N698 Cherry Lane, Waukesha.

**REDEMPTORIST RETREAT CENTER**  
 REST · REFLECT · RENEW

**Silent Preached Retreat  
 For Religious Women & Lay Women**

**Five-Day Retreats – \$375**  
 Monday, June 21 – Saturday, June 26, 2021  
 Monday, July 19 – Saturday, July 24, 2021

**Seven-Day Retreat – \$505**  
 Monday, July 5 – Monday, July 12, 2021

Theme: "The Journey of Faith from Transition to Transformation"  
 Presenters are Fr. Richard Thibodeau and Fr. Ted Lawson

To register for a retreat, visit [www.redemptoristretreat.org/shop](http://www.redemptoristretreat.org/shop)

**MILWAUKEE RETROUVAILLE  
 HELPING COUPLE CONNECT**

---

**4 STAGES OF MARRIAGE**

The 4 stages of marriage are: (1) Romance, (2) Disillusionment, (3) Misery, and (4) Awakening. Many marriages experience the first 3 Stages. Marriages that end in divorce never make it to the 4th Stage of Awakening. Don't give up without learning about the 4th Stage of Awakening. If your marriage suffers from Disillusionment or Misery, please contact Retrouvaille (pronounced retro-VI with a long I).

For confidential information about or to register for the program beginning July 16-18, 2021 in Oconomowoc, please call (414) 502-7685 or email: [Milwaukee@HelpOurMarriage.org](mailto:Milwaukee@HelpOurMarriage.org) or visit the website at <http://www.HelpOurMarriage.org>



**Steve & Joyce BERGELIN**  
www.SteveandJoyceBergelin.com

**REALTY EXECUTIVES**  
INTEGRITY  
(262) 424-8753

**TODD WANGERIN ELECTRIC, Inc.**  
Free Estimates - Licensed - Insured  
Over 20 years experience  
Todd Wangerin 262-719-4411  
twelectric4411@att.net

**BIEBEL'S True Value.**  
Hardware & Rental  
HARTLAND  
580 Hartbrook Dr. • 369-1070

**Oconomowoc Landscape Supply & Garden Center**  
Landscaping Supplies • Annuals  
Perennials • Trees & Shrubs  
Increase your Homes Value Enjoy a Beautiful Landscaped Yard  
262-567-1777  
www.olandscape.com • Corner of K & 67 at bypass

**Lake Country Financial Group LLC**  
Steven R. Seibel, CLU, ChFC, LUTCF  
Financial Advisor  
(262) 646-4115  
Securities offered only through Chicago Investments, Inc., a registered broker-dealer and member FINRA/SIPC. Lake Country Financial Group LLC and CoreCap are separate and unaffiliated entities. Advisory services offered through Chicago Advisors, Inc., a registered investment advisor.

Complete line of Hispanic & American Groceries.  
We specialize in fresh corn tortillas, Mexican bakery and our famous El Rey Tostadita Chips.  
**Serving Milwaukee Since 1978**  
El Rey Family Market 3220 W. Oklahoma Ave. Milwaukee, WI 53204 414-943-1640  
El Rey Plaza 3524 W. Sherman St. Milwaukee, WI 53215 414-943-1816  
El Rey Food Mart 1322 W. Sherman St. Milwaukee, WI 53204 414-388-7706

www.hhortho.com  
**Holzhauser, Hewett & Barta s.c.**  
Orthodontic Care For Children And Adults  
Daniel Holzhauser DDS MS | Charles Hewett DDS MS | Joshua Barta DDS MS  
520 Hartbrook Dr., Hartland 262-567-7076  
2516 N. Grandview Blvd, Waukesha 262-547-6365  
10225 W. Capitol Dr., Wauwatosa 414-463-5700

**BUNZEL'S OLD FASHIONED MEAT MARKET**  
Fresh Custom Cut Choice Meats  
Party Trays • Catering  
Thank You For Supporting A Family Tradition  
9015 W. BURLEIGH 873-7960  
www.bunzelmeats.com

**Lake Country Financial Group LLC**  
Steven R. Seibel, CLU, ChFC, LUTCF  
Financial Advisor  
(262) 646-4115  
Securities offered only through Chicago Investments, Inc., a registered broker-dealer and member FINRA/SIPC. Lake Country Financial Group LLC and CoreCap are separate and unaffiliated entities. Advisory services offered through Chicago Advisors, Inc., a registered investment advisor.

**FOOT & ANKLE Associates of Wisconsin**  
Parish Member  
Dr. Amy Galati  
Call: (262) 542-3779  
www.footandanklewi.com

**PROTECTING SENIORS NATIONWIDE MEDICAL ALERT SYSTEM**  
\$29.95/MO PLUS MEDICAL OFFER  
BILLED QUARTERLY  
CALL NOW! 1.877.801.7772 - WWW.24-7MEDALARM.COM

**KOWAL INVESTMENT GROUP**  
The Retirement Specialists  
Aaron T. Kowal, CFP®  
W238N1660 Busse Rd., Ste. 100, Waukesha, WI 53188  
262-522-4040  
www.kowalinvestmentgroup.com  
Securities offered through Raymond James Financial Services Inc. Member FINRA and SIPC. Investment Advisory Services offered through Raymond James Financial Services Advisors, Inc. and Kowal Investment Group, LLC. Kowal Investment Group, LLC is not a registered broker-dealer and is independent of Raymond James Financial Services.

Call us to schedule your free, no obligation, financial check-up today.  
**Dr. Hans Halaska**  
Hartland Family CHIROPRACTIC  
211 Cottonwood Ave, Hartland (262) 367-7424  
www.hartlandchiro.com

**Pat's Heating & Air Conditioning**  
30 YEARS OF EXCELLENCE  
262-567-7499  
OCOMOWOC  
www.patsheating.com

**PROTECTING SENIORS NATIONWIDE MEDICAL ALERT SYSTEM**  
\$29.95/MO PLUS MEDICAL OFFER  
BILLED QUARTERLY  
CALL NOW! 1.877.801.7772 - WWW.24-7MEDALARM.COM

**Hartland Family CHIROPRACTIC**  
211 Cottonwood Ave, Hartland (262) 367-7424  
www.hartlandchiro.com

**Dr. Hans Halaska**  
Hartland Family CHIROPRACTIC  
211 Cottonwood Ave, Hartland (262) 367-7424  
www.hartlandchiro.com

**Dr. Hans Halaska**  
Hartland Family CHIROPRACTIC  
211 Cottonwood Ave, Hartland (262) 367-7424  
www.hartlandchiro.com

**WE'RE HIRING AD SALES EXECUTIVES**  
• Full Time Position with Benefits  
• Sales Experience Preferred  
• Paid Training  
• Overnight Travel Required  
• Expense Reimbursement  
CONTACT US AT careers@4LPi.com www.4LPi.com/careers

**NEVER MISS A BULLETIN!**  
Sign up to have our weekly parish bulletin emailed to you at [www.parishesonline.com](http://www.parishesonline.com)

**TOWN BANK**  
AWINTRUST COMMUNITY BANK  
800-433-3076  
www.townbank.us

**Hartland Terrace Assisted Living**  
• RN Lead 24-Hour Elite Care Team  
• Full Continuum of Care • Memory Care  
• All Inclusive Pricing • Private Studios  
• Family Centered Care Model  
327 North Avenue • Hartland | 262-369-4391  
www.hartlandterrace.com

**R&R Insurance**  
Rick Kalscheuer  
Parish Member  
800.566.7007 | MyKnowledgeBroker.com

**MICHAEL J. FINN S.C.**  
ATTORNEY AT LAW  
PARISH MEMBER  
262-367-8485  
mjfinnsc@sbcglobal.net  
163 E. Capitol Dr., Hartland, WI 53029

**VS VISU-SEWER, INC.**  
262-695-2340  
Professional Sewer Inspection, Maintenance and Rehabilitation Services  
Parish Members  
www.visu-sewer.com

**Culver's**  
701 Industrial Ct., Hartland  
262-367-5800

**DON CULL EXCAVATING**  
W298 N9248 Center Oak Rd  
Septic & Mound Systems Grading  
966-7038  
MPRS 221589

**LAKE COUNTRY REAL ESTATE**  
Scott Heyerdahl  
262-719-6970  
Sheyerdahl@firstwebber.com

**SPREAD THE WORD**  
A Thriving, Vibrant Community Matters  
SUPPORT OUR ADVERTISERS

**CHARLES St.**  
St. Charles School... We choose Christ in learning, living, & values in the light of our faith.  
262-367-2040  
www.stcharlesschoolhartland.com

**JENSON MOTORS Auto - Truck Repair**  
Hours: Mon-Fri 7:30-5:30  
Proprietor: Guy Jenson  
262-367-5556  
364 Cottonwood Ave., Hartland, WI

**SUPPORT OUR ADVERTISERS!**

**FOX BROS.**  
206 Concomenc  
262-367-2922  
1700 D. Main St.  
262-567-8376  
Open 7 days a week  
6am-9pm

**ECHO LAWN'S**  
Henry & Diane Barwinski, Co-Owners  
A Complete Lawn, Landscape, and Snow Removal Service  
Milwaukee 414-462-6670  
Lake Country 262-695-8152

**AVAILABLE FOR A LIMITED TIME!**  
ADVERTISE HERE NOW!  
Contact **Jeff Tkachuk** to place an ad today! [jtkachuk@4LPi.com](mailto:jtkachuk@4LPi.com)  
or (800) 950-9952 x2513

**KLINK'S KARPETS, INC**  
Hartland's Floor Covering Center  
Family Owned & Operated for over 47 Years  
Carpeting & Hard Surfaces  
107 North Ave. Hartland, WI  
367-4670 Parish Member

**Too Sick for Mass?**  
SUPPORT OUR PARISH NO MATTER WHERE YOU ARE!  
Sign-up to get your bulletin delivered right to your inbox!  
[www.parishesonline.com](http://www.parishesonline.com)

**SPRUNG ARMSTRONG AIR**  
Heating, Sheet Metal & Well Pump Service  
7024 Main St., Merton  
538-1400  
Service • Repair & New Construction  
Residential & Commercial  
Parish Members

**Lake Country Eye Care**  
520 Hartbrook Dr. • Hartland, WI 53029  
Amber A. Dentz, OD - Parishioner  
[www.lakecountryeyecare.com](http://www.lakecountryeyecare.com)  
262-367-6610

**DAVE PERRY**  
heating cooling  
Proudly Serving the Lake Country Area for more than 20 years  
Heating • Air Conditioning • Geothermal New Construction • Replacement  
262.966.1959  
[www.daveperryheatingandcooling.com](http://www.daveperryheatingandcooling.com)

**Generations DENTAL**  
Jim Muentzenberger, D.D.S. 100 E. Capitol Dr. Hartland, WI 53029  
Office: 262-367-9999  
Parish Members  
General Dentistry • Endodontics • Periodontics • Prosthodontics • Pediatric Dentistry • Oral Surgery • Emergency Services

**Palmer's STEAKHOUSE**  
 www.Palmersteakhouse.com  
 122 E. Capitol Dr. • Hartland, WI  
 262-369-3939

**Bob Hamilton**  
 207 E. CAPITOL DRIVE • HARTLAND, WI 53029  
 262.367.2312  
 BHAMILTO@emfam.com

**The Mobile Repair Guys**  
 "Your small engine maintenance & repair specialists"  
**Small Engine Maintenance and Repair**  
 Specializing in Lawn Mowers & Snow Blowers  
 WE COME TO YOU AT NO EXTRA COST  
 414-617-3490

Lake Country Home Realty  
**Jim Lotz** MLS  
 262.312.8603  
 Jim@LakeCountryHomeRealty.com  
 www.LakeCountryHomeRealty.com

**REICHL & KOLSTAD ORTHODONTICS**  
 Dr. Peter Reichl & Dr. James Kolstad  
 look forward to meeting you!  
 Offering Traditional Braces & Invisalign  
 Located in Waukesha, Mukwonago & Hartland  
**262-547-2827**  
 www.ReichlKolstadOrtho.com

**UnitedDrivingSchoolWI.com**  
**ENROLL TODAY!**

**Wolf Electric LLC**  
 Commercial, Industrial, Residential  
**Garrett Wolf** • Master Electrician/Parishioner  
 Commercial • Industrial • Residential  
 (262) 224-7310 • www.wolfelectricllc.com

**SUPPORT YOUR LOCAL PARISH.**  
 Buy a bulletin ad space today!

**EVERLUKO FUNERAL HOME**  
 262-167-2150  
**PASSAGES**  
 Cremation Service

**CARPET PLUS, INC.**  
 We Bring the Showroom to You!  
 (414) 573-0105  
 Proudly Serving Crusader Nation for over 20 years!  
**Dan Taylor, Parish Member**

**WEALTHSPIRE ADVISORS**  
**Brion Collins**  
 CFP® Professional & Parishioner  
 262.326.6090 | www.wealthspire.com  
 We salute the St. Charles community and all who make such a profound difference.

**What Will Be Your Legacy?**  
 If you value your faith and your family, I welcome the opportunity to share my faith-based perspective in union with my financial experience in order to co-create a personal legacy strategy. I can assist with: Portfolio Management | Retirement Planning | Financial & Legacy Strategies | Special Needs Planning

**Kurt Maltby, CFP®, CHSNC®**  
 CERTIFIED FINANCIAL PLANNER™  
 Associate Vice President, Financial Advisor  
**Morgan Stanley**  
 20975 Swenson Drive, Waukesha  
 Phone: (262) 523-8303 | NMLS # 1504808  
 advisor.morganstanley.com/the-riverwood-wealth-management-group

**EVERLUKO FUNERAL HOME**  
 262-167-2150  
**PASSAGES**  
 Cremation Service

**H+P** CERTIFIED PUBLIC ACCOUNTANTS  
 Mark G. Hayes, CPA  
 262-367-5505 • 262-367-0545 Fax  
 365 Cottonwood Ave., Suite A • Hartland, WI 53029  
 mark@hpcpa.tax • www.hpcpa.tax

**ADT-Monitored Home Security**  
 Get 24-Hour Protection From a Name You Can Trust  
 Burglary • Flood Detection  
 Fire Safety • Carbon Monoxide  
 1-855-225-4251

**Emanuele & Haut, CPAs, SC**  
 Certified Public Accountants  
 142 E. Capitol Dr. Hartland, WI  
 Parish Member  
 262.367.1040  
 sam@ehcpas.com

**COURI INSURANCE AGENCY**  
 Protection for the Unexpected™  
**Coverages IMPORTANT Pricing IMPORTANT Low Costs GREAT COVERAGES**  
 Jerry & Judie Couri  
 262-548-8077 • couri.com

**DUNN INVESTMENT MANAGEMENT GROUP**  
 of RBC Wealth Management  
**James P. Dunn**  
 Managing Director - Financial Advisor  
 Senior Portfolio Manager - Portfolio Focus  
 18500 West Corporate Drive, Ste. 100 Brookfield, WI 53045  
 Call (262) 395-1101 for an appointment  
 james.dunn@rbc.com

**SPORTS GRILL**  
 PIZZA • FRIDAY FISH FRY • SANDWICHES  
 \*\$5.00 OFF ANY 16" PIZZA  
 \*SUNDAY'S "KIDS EAT FREE" WITH ADULT PURCHASE  
 We do Parties & Catering!  
 Not valid with any other offers or coupons  
**369-0079**  
 300 COTTONWOOD • HARTLAND  
 PARISH MEMBER

**ADT-Monitored Home Security**  
 Get 24-Hour Protection From a Name You Can Trust  
 Burglary • Flood Detection  
 Fire Safety • Carbon Monoxide  
 1-855-225-4251

**SUPPORT OUR ADVERTISERS!**

**AVAILABLE FOR A LIMITED TIME!**  
**ADVERTISE HERE NOW!**  
 Contact **Jeff Tkachuk** to place an ad today!  
 jtkachuk@4LPI.com or (800) 950-9952 x2513

**GOOD TIMES DAY CAMP**  
 262-521-8100 • WWW.GOODTIMESWI.COM  
 Where happiness and wonderment come to play!  
 • Now Enrolling Ages 3 - 15  
 • 15 Acres & 2 Heated Pools  
 • Many Athletic Fields  
 • Swimming Lessons Included  
 • Field Trips Included  
 • Bussing to/from Hartland  
 • Bussing to/from Brookfield  
 • Worry Free Scheduling  
 • Low Ratio's  
 • Accepting Counselor Applications  
 Where challenges are met, goals are accomplished, and friendships and memories made last a lifetime!

**PAUN Construction**  
 Specializing in Masonry Residential & Commercial  
 W300 N7741 Christine Ln., Hartland, WI 53029  
**Robert J. Paun** (262) 326-8043  
 www.paunconstruction.com  
 mail@paunconstruction.com

Please Support these **CONTRACTORS**  
 Thank You to these contractors helping St Charles grow!

**Vicki Marciniak**  
 When it comes to your home, it's more than just business, it's personal.  
 Cell: (414) 243-5584  
 vmarciniak@firstweber.com  
 www.VickiMarciniak.FirstWeber.com

**NELCO ELECTRIC, INC.**  
 GERMANTOWN, WI  
 Commercial • Industrial • Residential  
 24 Hour Service 262-502-9950  
 WWW.NELCOELECTRIC.COM  
 Barb Jarchow Parishioner

**zimmerman**  
 ARCHITECTURAL STUDIOS, INC.  
 200 West 9th Street, Apt. 200  
 Milwaukee, WI 53233 | www.zimmerman.com  
 (414) 438-9900  
 (414) 438-9300

**FRONTIER**  
 TITLE & CLOSING SERVICES, LLC  
 1130 James Drive, Hartland, WI 53029  
 Office: 262-361-4466 Fax: 262-361-4462  
 www.frontiertitlellc.com  
 Frontier Title & Closing Services, LLC  
 Lake Country's Most Experienced Title & Closing Company  
 Specializing in Residential, Commercial & New Construction Transactions  
 Serving the Real Estate Community!

**BUILDERS Hunzinger**  
 SINCE 1907  
 Kevin O'Toole, Parish Member  
 Construction Manager General Contractors  
 Brookfield, WI 262-797-0797

**Lifetime Door Co**  
 GARAGE DOORS • DOOR OPENERS • REPAIRED OR REPLACED  
 SALES • SERVICE • INSTALLATION  
 262-567-9203