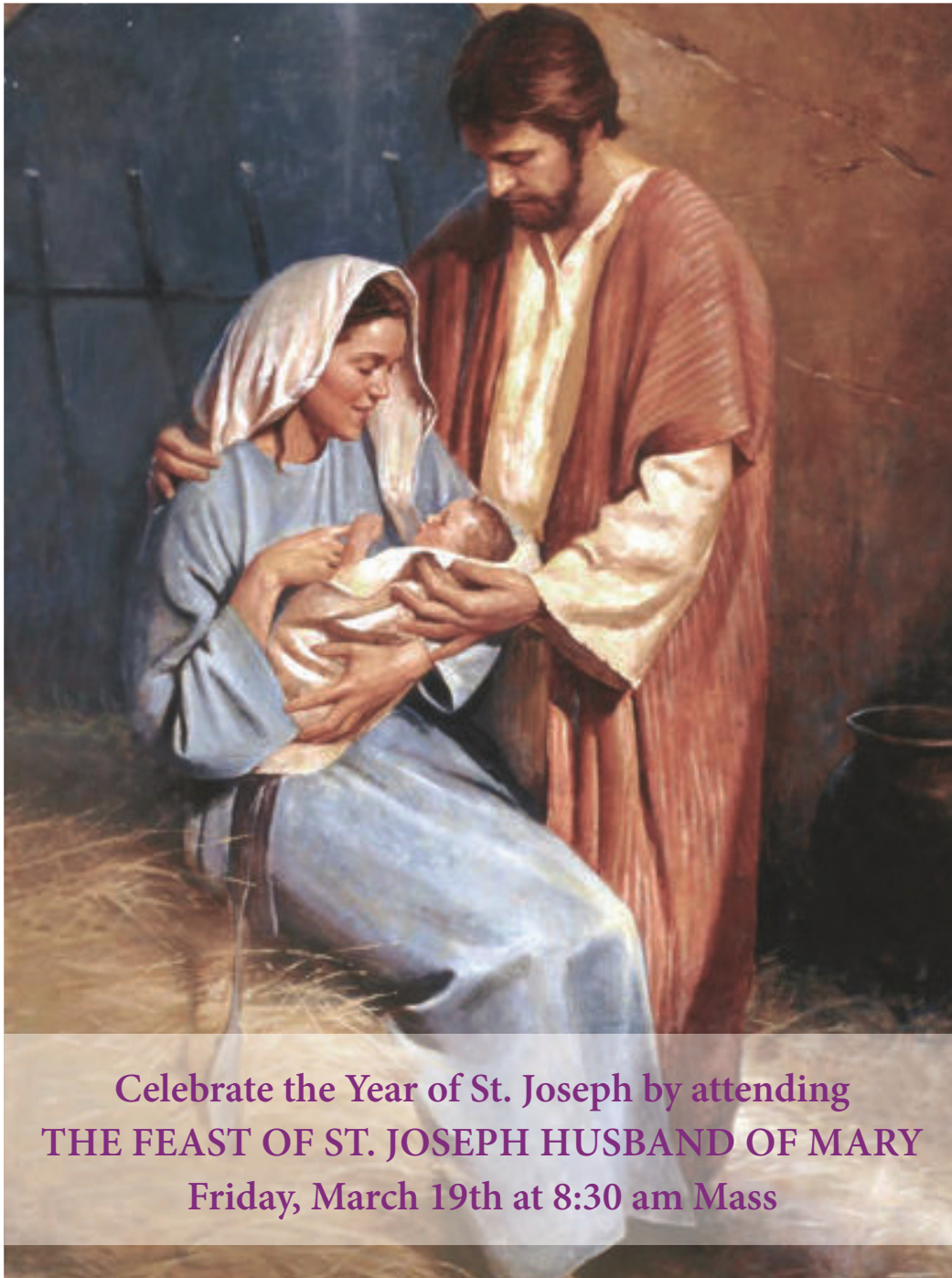




At St. Charles, all are invited to  
meet Christ, know Christ,  
love Christ and serve Christ.

March 14, 2021  
FOURTH SUNDAY OF LENT



Celebrate the Year of St. Joseph by attending  
**THE FEAST OF ST. JOSEPH HUSBAND OF MARY**  
Friday, March 19th at 8:30 am Mass



## 4th Sunday OF LENT

*“For God so loved the world that he gave his only Son, so that everyone who believes in him might not perish but might have eternal life.”*  
~ John 3:16



313 Circle Drive, Hartland, WI 53029 • 262-367-0800  
[www.stcharleshartland.com](http://www.stcharleshartland.com) • email: [parish@stcharleshartland.com](mailto:parish@stcharleshartland.com)



# WELCOME TO ST. CHARLES - WE ARE HERE FOR YOU



PASTOR  
Fr. Ken Omernick



ASSOCIATE PASTOR  
Fr. Nick Baumgardner



PERMANENT DEACON  
Rob Mitchell

## ST. CHARLES STAFF TEAMS

**TRANSITIONAL DEACON:** Tim Schumaker  
[tschumaker@stcharleshartland.org](mailto:tschumaker@stcharleshartland.org)

**TEACHING PARISH SEMINARIANS:**  
Robert Ross, [rross@sfs.edu](mailto:rross@sfs.edu)  
David Sweeney, [dsweeney@sfs.edu](mailto:dsweeney@sfs.edu)

**SCHOOL TEAM** 262-367-2040  
Principal/Team Lead: Dan Garvey, Ext. 208,  
[dgarvey@stcharleshartland.org](mailto:dgarvey@stcharleshartland.org)  
Advancement Officer: Allison Caswell, Ext. 227,  
[acaswell@stcharleshartland.org](mailto:acaswell@stcharleshartland.org)  
School Administrative: Lisa Moehrke, Ext. 206,  
[school@stcharleshartland.com](mailto:school@stcharleshartland.com)  
School Administrative: Karen Dejewski, Ext. 206,  
[school@stcharleshartland.com](mailto:school@stcharleshartland.com)

**DISCIPLESHIP TEAM**  
Associate Pastor/Team Lead: Fr. Nick Baumgardner,  
[nbaumgardner@stcharleshartland.org](mailto:nbaumgardner@stcharleshartland.org)  
Adult Small Groups: Maria Notch, Ext. 220,  
[mnotch@stcharleshartland.org](mailto:mnotch@stcharleshartland.org)  
Children's Discipleship: Alicia Van Hecke, Ext. 205,  
[avanhecke@stcharleshartland.org](mailto:avanhecke@stcharleshartland.org)  
Student Discipleship Lead: Nick Scanlan, Ext. 209,  
[nscanlan@stcharleshartland.org](mailto:nscanlan@stcharleshartland.org)  
Student Discipleship Co-lead: Rachel Heffron, Ext. 221,  
[rheffron@stcharleshartland.org](mailto:rheffron@stcharleshartland.org)  
Discipleship/Administrative: Trish Gilchrist, Ext. 230,  
[tgilchrist@stcharleshartland.org](mailto:tgilchrist@stcharleshartland.org)

**OPERATIONS TEAM**  
Operations Manager/Team Lead: Marge Beck, Ext. 201,  
[mbeck@stcharleshartland.org](mailto:mbeck@stcharleshartland.org)  
Facilities Manager: Mike Cattani, Ext. 210,  
[mcattani@stcharleshartland.org](mailto:mcattani@stcharleshartland.org)  
Maintenance Manager: Tim Orzechowski, Ext. 217,  
[torzechowski@stcharleshartland.org](mailto:torzechowski@stcharleshartland.org)  
Bookkeeping Specialist: Dee Anne Hamer, Ext. 200,  
[dhamer@stcharleshartland.org](mailto:dhamer@stcharleshartland.org)  
Cornerstone/Safeguarding: Karen Dejewski,  
[cornerstoneproject@stcharleshartland.org](mailto:cornerstoneproject@stcharleshartland.org)

### WORSHIP TEAM

Worship Lead: Peg Kasun, Ext. 225,  
[pkasun@stcharleshartland.org](mailto:pkasun@stcharleshartland.org)  
Deacon: Deacon Rob Mitchell,  
[rmitchell@stcharleshartland.org](mailto:rmitchell@stcharleshartland.org)  
Liturgist : Elizabeth Thompson, M.Div., 262-367-6704  
[ethompson@stcharleshartland.org](mailto:ethompson@stcharleshartland.org)  
Musician: Scott Currier, Ext. 225,  
[scurrier@stcharleshartland.org](mailto:scurrier@stcharleshartland.org)  
Wedding Coordinator: Dee Anne Hamer, Ext. 222,  
[dhamer@stcharleshartland.org](mailto:dhamer@stcharleshartland.org)

### COMMUNICATION & STEWARDSHIP TEAM

Assist. to the Pastor/Team Lead: Terrie Carew, Ext. 224,  
[tcarew@stcharleshartland.org](mailto:tcarew@stcharleshartland.org)  
Communications Coordinator: Allison Caswell, Ext. 215,  
[acaswell@stcharleshartland.org](mailto:acaswell@stcharleshartland.org)  
Graphic Design Specialist: Renee Krier, Ext. 224,  
[rkrier@stcharleshartland.org](mailto:rkrier@stcharleshartland.org)  
Welcome Receptionist: Debra Hertel, Ext. 226,  
[dhertel@stcharleshartland.org](mailto:dhertel@stcharleshartland.org)  
Parishioner Engagement: Nancy Neuser,  
[nneuser@stcharleshartland.org](mailto:nneuser@stcharleshartland.org)  
Administrative: Kathy Gillstrom, Ext. 200,  
[kgillstrom@stcharleshartland.org](mailto:kgillstrom@stcharleshartland.org)

PARISH OFFICE: 262-367-0800,  
Mon. - Fri., 8 am - 4 pm

EMAIL US: [parish@stcharleshartland.org](mailto:parish@stcharleshartland.org)

WEBSITE & LIVESTREAM: [www.stcharleshartland.com](http://www.stcharleshartland.com)

FOYER HOURS FOR DONATIONS:  
Mon. - Fri., 6:15 am - 3:30 pm

PARISH SCHOOL: 262-367-2040,  
[school@stcharleshartland.com](mailto:school@stcharleshartland.com)



# WELCOME TO ST. CHARLES - WE ARE HERE FOR YOU

SATURDAY MASS OF ANTICIPATION: 5:00pm

SUNDAY MASS TIMES: 7:00am, 9:00am, 11:00am & 6:00pm

WEEKDAY MASS: Monday ~ Saturday: 8:30am  
Monday ~ Friday: 6:30am (during Lent)

TUESDAY TRADITIONAL MASS

The following Tuesdays at 5:30 pm: March 23, April 27 & May 25.

EUCCHARISTIC ADORATION

Mondays: 5:00-7:00pm with closing prayer (includes music)

Tuesdays: 6:30-8:00pm with 7:30pm Rosary and closing prayer

Wednesday & Thursday: 7:00am - 8:15am (during LENT)

Fridays: 9:00am-3:00pm with the Divine Mercy Chaplet at 3:00pm followed by Benediction

RECONCILIATION

Saturday: 3:30pm - 4:30pm & Thursdays: 5:00pm - 6:00pm or by appointment (schedule by calling the Parish Office).

SACRAMENT OF THE SICK

By appointment with Fr. Ken or Fr. Nick (schedule by calling the Parish Office).

JOIN OUR PARISH

Contact the Parish Office during office hours at 262-367-0800 or parish@stcharleshartland.org.

PLANNING TO BE MARRIED?

Congratulations! Please notify St. Charles at least six months in advance. Weddings may be celebrated on Friday evenings and Saturdays at 11:00am and 2:00pm. Exceptions are made only with the permission of the Pastor. Please contact Dee Anne Hamer at 262-367-0800 Ext. 222.

ARE YOU EXPECTING OR ADOPTING A CHILD?

St. Charles is honored to serve parents seeking Baptism for their child(ren). To find out more information about our preparation process and to schedule infant/child Baptisms, please contact the Parish Front Office at 262-367-0800.

BECOMING FULLY CATHOLIC

Are you unbaptized or baptized in a different Christian faith and considering becoming Catholic? Are you a baptized Catholic who did not receive the Sacraments of Reconciliation, Eucharist and/or Confirmation? St. Charles provides an adult formation process that will help you discover Jesus and His Holy Catholic Church. please contact the Parish Front Office at 262-367-0800.

SMALL GROUPS

The Small Group movement at St. Charles offers you a way to authentically seek Jesus in small faith sharing communities. Small Groups gather in members' homes throughout Lake Country during Fall and Lent. For more information, please contact Maria Notch at 262-367-0800 Ext. 220.

OUTREACH SERVICES TEAM: Terri Blazek: 262-367-7608, jtblazek@wi.rr.com

TO ASK FOR PRAYERS or to be added to the email list, please email: prayernetwork@stcharleshartland.org

FOR EMERGENCY PRAYERS, please email: emergencyprayers@stcharleshartland.org

ST. VINCENT DE PAUL: if you need food, shelter or assistance call 262-367-0800 (Parish Office)

NEED HOME COMMUNION (temporarily suspended):  
For information call 262-367-0800 (Parish Office)

## Mass Intentions for the Week of March 14th



### Sunday, March 14

7:00 am † Norbert & Joseph Seipel  
9:00 am Living and Deceased Members of St. Charles  
11:00 am † Joseph Richard Geason  
6:00 pm † Edward Cibula

### Monday, March 15

6:30 am † Ed & Eunice Kollross  
8:30 am † Catherine Dondero

### Tuesday, March 16

6:30 am † Claude Fantozzi  
8:30 am Living and Deceased Members of St. Charles  
Christian Women

### Wednesday, March 17

6:30 am † Jeffry Hamilton  
8:30 am Living and Deceased Members of Daniel  
Fitzgerald and Joseph Connolly Sr. Families

### Thursday, March 18

6:30 am † Dawn Kollross & Conrad Kollross  
8:30 am † Tim McCarty

### Friday, March 19

6:30 am † Jim & Dorothy Zingsheim  
8:30 am Special Intention

### Saturday, March 20

8:30 am Special Intention  
5:00 pm † Marge Mentzer

### Sunday, March 21

7:00 am † Edward Cibula  
9:00 am † Beverly Halloran  
11:00 am Living and Deceased Members of St. Charles  
6:00 pm † Loretta Moody

## Bulletin Due Dates!

If you have an event(s) you would like to publicize in a late March/early April bulletin please, submit your information by the due dates listed below. These earlier deadlines are due to the printer's holiday schedule. Please submit all articles by 8:00 am on the due date.

- March 28th Bulletin info is due Wednesday, March 17th
- April 4th Bulletin info is due Monday, March 22nd

## Bulletin Advertisers of the Week

Please support our advertisers!

**Emanuele & Haut, CPAs, SC**  
Certified Public Accountants  
142 E. Capitol Dr. Hartland, WI  
Pariish Member  
262.367.1040  
sam@ehcpas.com

**JENSON MOTORS**  
Auto - Truck Repair  
Hours: Mon-Fri 7:30-5:30  
Proprietor: Guy Jenson  
262-367-5556  
364 Cottonwood Ave., Hartland, WI

Find new ways to spread the word of God to every corner of the world.

Pope Francis

THIS WEEKEND'S GOSPEL MEDITATION  
4TH SUNDAY OF LENT

Is there something to Lent that goes beyond our own spiritual house cleaning and spiritual refinement? Yes, there is! It has to do with listening and learning so that we can take up the task of the Gospel with greater clarity and fortitude. While the spiritual refocusing of Lent is necessary, the fruit of this Lenten conversion has much more to do with learning how we can be a better Church than it does about our eternal salvation. Salvation is a gift that flows out of God's unconditional Mercy and cannot be merited. The spiritual maturity we can experience as a result of our Lenten disciplines serves to reduce the anxiety and apprehension we may experience as messengers of good, but very challenging and unsettling, news.

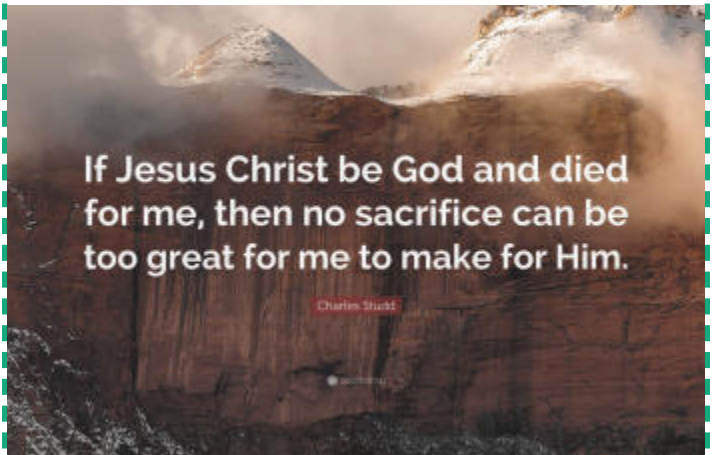
St. Oscar Romero said that, "a church that doesn't provoke any crises, a gospel that doesn't unsettle, a word of God that doesn't get under anyone's skin, a word of God that doesn't touch the real sin of the society in which it is being proclaimed, what gospel is that?" When we listen to those descriptive and provocative words, do they resonate with anything in our experience? As messengers of the Gospel, we are called to bring an unsettling message to the world. If our main concern is protecting our self-interests, then we are missing something huge! Many really struggle with being rejected, dismissed, or perceived as someone who is speaking out of turn. There is a counter-cultural message that must be preached that clearly sides with the poor, marginalized, victimized, oppressed, neglected, disregarded, and lost souls throughout the world. There is a widespread misery among the peoples that is all too often allowed to fester with no one coming forward to offer a change or resolution.

The Church can speak to the needed structural changes that will allow people to earn just wages, feed their families and share abundantly and equally in the gifts of God's good earth. Such a vision is not some optimistic fairy tale but the vision of the Creator himself. Lent reminds us, as St. Oscar Romero also states, that "we are workers, not master builder, ministers, not messiahs. We are prophets of a future not our own." We are not called to labor simply for the benefit of the here and now but of the "what is to come." Our myopic vision can be replaced by a more far-reaching Lenten vision that is much greater and deeper in scope. As long as we are carrying the right blueprints with us and our thoughts extend beyond ourselves, then even the little things we do and the simplest prayer we utter go a long way. They give witness to our preference for the light of Christ and not the darkness of error and sin. ©LPI



15 minutes each day spent in God's presence – reading, reflecting, responding and resting with his Word – adds up to 90 hours in one year. That is time well spent and a testimony to how a little at a time turns into something remarkable!

Reflection questions for Sunday, March 21st



- Around 600 BC, Jeremiah prophesied that God would establish a new, unbreakable covenant with his people, one written "upon their hearts." In what ways is your faith heartfelt?
- The author of Hebrews teaches us that Jesus learned "obedience" from his suffering. What have been some fruits from the suffering in your life?
- We hear today of Jesus' own struggle with his impending death. During this Lenten season, what has been a struggle for you?

Readings for the Week of March 14th

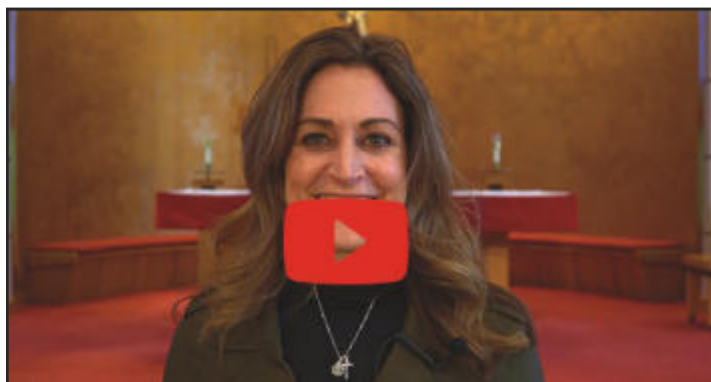
- Sunday:** 2 Chr 36:14-16, 19-23/Ps 137:1-2, 3, 4-5, 6 [6ab]/Eph 2:4-10/Jn 3:14-21 or 1 Sm 16:1b, 6-7, 10-13a/Ps 23:1-3a, 3b-4m 5, 6 [1]/Eph 5:8-14/Jn 9:1-41 or 9:1, 6-9, 13-17, 34-38
- Monday:** Is 65:17-21/Ps 30:2 and 4, 5-6, 11-12a and 13b [2a]/Jn 4:43-54
- Tuesday:** Ez 47:1-9, 12/Ps 46:2-3, 5-6, 8-9 [8]/Jn 5:1-16
- Wednesday:** Is 49:8-15/Ps 145:8-9, 13cd-14, 17-18 [8a]/Jn 5:17-30
- Thursday:** Ex 32:7-14/Ps 106:19-20, 21-22, 23 [4a]/Jn 5:31-47
- Friday:** 2 Sm 7:4-5a, 12-14a, 16/Ps 89:2-3, 4-5, 27, 29 [37]/Rom 4:13, 16-18, 22/Mt 1:16, 18-21, 24a or Lk 2:41-51a
- Saturday:** Jer 11:18-20/Ps 7:2-3, 9bc-10, 11-12 [2a]/Jn 7:40-53
- Next Sunday:** Jer 31:31-34/Ps 51:3-4, 12-13, 14-15 [12a]/Heb 5:7-9/Jn 12:20-33 or Ez 37:12-14/Rom 8:8-11/Ps 130:1-2, 3-4, 5-6, 7-8 [7]/Jn 11:1-45 or 11:3-7, 17, 20-27, 33b-45



READ. REFLECT. RESPOND. REST.

Cut out and keep in your Bible for reference!

START WITH PRAYER AND  
THE HOLY SPIRIT WILL GUIDE YOU!



### TRANSFORMED TESTIMONIAL LENTEN VIDEOS

This year, St. Charles is releasing a Transformed Testimonial Video every week throughout Lent. These videos highlight how parishioners have grown in the areas of prayer, fasting, and almsgiving through their participation in a Small Group. The new videos are released every Friday, and all videos are on our website during Lent.

We created these videos to show our parishioners that Small Groups are an integral part of our community at St. Charles. Small Groups are one of the ways parishioners meet Christ, know Christ, love Christ and serve Christ. We'd like you to take the Lenten Season to prayerfully consider joining a Small Group for the Easter Season. Sign Ups will begin the weekend of April 10th/11th.

**Start the process of prayer now, in Lent, by taking the 1% Prayer Challenge, which is spending just 15 minutes a day in prayer.** You can find details on how to do this both on page 4 in the bulletin and on our website on the Small Groups Videos 'News' page.

Use this Lenten Season to open the Scriptures a little every day and ask the Lord if He's calling you to go deeper in your faith by joining a Small Group after Easter.

**Please contact Maria Notch at 262-367-0800 Ext. 220 if you want to learn more about Small Groups.**



Jackie  
Endter

"Being in a Small Group at St. Charles has been such a blessing for me. It feels now like I am part of a church family. Seeing the ladies I have met in and out of church brings me such joy. Our time together reading and discussing scriptures prior to Mass has enriched my weekly Mass time so much, as well as my daily prayers. I would encourage anyone to join a Small Group."



To learn more about Small Groups,  
please contact Maria Notch at  
[mnotch@stcharleshartland.org](mailto:mnotch@stcharleshartland.org).



Wednesday, March 24, 2021

Hosted by 16 parishes around the Archdiocese

For locations and times,  
visit [archmil.org/pray-reconcile-rejoice](http://archmil.org/pray-reconcile-rejoice)

### St. Charles Parish, Hartland

10 a.m. to 2 p.m. and 4 p.m. to 7 p.m.

- St. Katharine Drexel Parish, Beaver Dam
- Holy Family Parish, Fond du Lac
- St. Anne Parish, Pleasant Prairie
- St. Elizabeth Parish, Kenosha
- Our Lady of the Holy Rosary Parish, Kenosha
- Our Lady of Mount Carmel Parish, Kenosha
- Basilica of St. Josaphat, Milwaukee
- St. Margaret Mary Parish, Milwaukee
- St. Monica Parish, Whitefish Bay
- Sacred Heart Parish, Racine
- St. Peter Claver Parish, Sheboygan
- St. Charles Borromeo Parish, Burlington
- St. Peter Parish, Slinger
- St. Dominic Parish, Brookfield
- St. John Vianney Parish, Brookfield
- St. Leonard Parish, Muskego

### OTHER RECONCILIATION OPPORTUNITIES AT ST. CHARLES

Every Thursday evening, 5:00 - 6:00 p.m.  
(except on Holy Thursday, April 1)

Every Saturday afternoon, 3:30 - 4:30 p.m.  
(except on Holy Saturday, April 3)

Lenten Penance Service - Saturday, March 27 at 10:30 a.m.

# CELEBRATING LENT & EASTER AT ST. CHARLES



## ST. CHARLES HOLY WEEK & EASTER

### March 27th: Palm Sunday Vigil

5:00 pm Mass

### March 28th: Palm Sunday

7:00 am, 9:00 am & 11:00 am Masses

6:00 pm Mass

### April 1st: Holy Thursday

8:30 am Morning Prayer in Church

**7:00 pm Mass of the Lord's Supper (Incense)  
with Adoration in the Chapel until midnight**

*Your Rice Bowls/other Lenten alms may be returned this evening.*

### April 2nd: Good Friday

8:30 am Morning Prayer in Church

**1:00 pm Celebration of the Lord's Passion**

**7:00 pm Celebration of the Lord's Passion**

*Collection for Holy Land place in baskets in Narthex.*

### April 3rd: Holy Saturday

8:30 am Morning Prayer in Church

4:00 pm Blessing of Food

**8:00 pm Easter Vigil (Incense)**

(Attendance at the Easter Vigil fulfills Sunday obligation)

### April 4th: Easter Sunday (Reservations Required)

7:00 am Mass

9:00 am & 11:00 am Masses (Incense)

(No 6:00 pm Mass on Easter Sunday)



## CELEBRATE THE TRADITIONAL MASS

Do you desire to be drawn more deeply into the mystery of the Mass? Do you want to encounter some of the ancient treasures of the Church? Then join us for our monthly Traditional Mass here at St. Charles. The Mass will take place on the following Tuesdays at 5:30 p.m.: March 23, April 27, and May 25.



We look forward to celebrating Easter Mass with you! Registration will be required for Masses on Easter Sunday due to social distancing. Please visit our website, **starting Monday, March 15th** and click on the green Easter Mass Reservations button located next to our livestream. Once you are on Sign Up Genius' website, please scroll down, check the 'Sign Up' box and then click the 'Submit and Sign Up' button. Enter your information and **reserve the number of seats you would like for your immediate family only. Please print your email confirmation or save it to your smart phone and bring this confirmation with you on Easter Sunday.** If you or someone in your family is unable to attend, we ask that you edit your reservation via Sign Up Genius so someone else may celebrate Mass. **Information on how to change your reservation will be in your confirmation email.** If there are no spots available, you are welcome to join us via livestream on our website. Please contact our Parish Office with any questions via email at [parish@stcharleshartland.org](mailto:parish@stcharleshartland.org) or call 262-367-0800.



## ST. CHARLES DINING OUT!

We are so happy to announce that Endter's Sports Grill is generously offering St. Charles Parish

### NEW LENTEN FRIDAY FISH FRY!

March 19, 26 and April 2

**When placing your order, mention the St. Charles Fish Fry Menu!** A portion of each Lenten Friday Fish Fry dinner will be donated to St. Charles Parish.

#### Hand Battered Cod Dinner:

• 2PC - \$13 • 4 PC - \$16 • 6 PC - \$18

#### Combos:

- 4 Shrimp & 2pc Cod - \$17
- 4 Shrimp & Baked Cod - \$19
- 4 Shrimp & 3 Perch - \$19
- Baked Cod - \$15
- Breaded Fried Lake Perch (5) - \$16
- Breaded Butterfly Shrimp (8) - \$16

*\*All Fish Fry's include French Fries or Potato Pancakes, Rye Bread & Coleslaw, Lemon. Tax and gratuity not included.*

### Endter's Pizza Night Out Sunday, March 21st - 4 pm to 10 pm

All offers good for dine in or carry out. For carry out call 262-369-0079.

Remember to buy SCRIP for Endter's in the Parish Office and then spend it during your visit.

# CELEBRATING LENT AT ST. CHARLES

## 40 DAYS FOR LIFE

February 17th to March 28th

40 Day prayer partners are there to support the mothers of unborn babies with prayer, comforting words and practical information. Many are directed to the Women's Care Center of Milwaukee for free counseling about life-saving alternatives.

Please join the St. Charles Respect for Life Ministry every Tuesday. We meet at 11:30 am in the St. Charles parking lot and carpool to Affiliated Medical Services, 1428 N Farwell Ave., Milwaukee. We peacefully pray outside the abortion clinic from noon until 2:00 pm.

Please note that if you are unable to join us in prayer during these times, please pray and fast for the unborn and their parents.

To learn more about 40 Days for Life, visit the Milwaukee website at [40daysforlife.com/local-campaigns/Milwaukee](http://40daysforlife.com/local-campaigns/Milwaukee).



### REMEMBER YOUR SCRIP FOR EASTER!

Remember to use Scrip for your Easter shopping and gift giving. Remember, when you buy products with Scrip gift cards, you support our parish and school! You can order gift cards through their website ([www.shopwithscrip.com](http://www.shopwithscrip.com)) and have them sent to St. Charles' Parish Office to pick up. You are also able to fill out the paper order form at the Parish Office to receive your order. Thank you for supporting St. Charles!



### TRYING NEW FOODS IN TIMOR-LESTE

Timor-Leste has the highest rate of child malnutrition in Asia, and many children suffer from stunting, which makes a big impact on a child's growth and future. Home gardens and fishponds are helping families provide better nutrition for their children. What do you eat to stay healthy? What can you do to ensure children have enough food to thrive? Visit [csrricebowl.org](http://csrricebowl.org) to learn more.

**Operation Rice Bowl began at St. Charles on Ash Wednesday and ends on Holy Thursday.** Instead of putting your pocket change into the family penny jar, please consider giving this Lent to other families who need your help. Thank you for your support of this program!



## Festival of the Lord Offering

The beautiful decorations in our Church during the Easter season lift our spirits closer to the Lord Jesus as we celebrate His resurrection. They help us to pray more deeply and feel closer to one another. We invite you to make an offering in memory of a loved one, in thanksgiving for a blessing in your life, for a special intention or simply as a free-will offering. We will list the names of the people remembered, the blessings recalled or the intentions held in your hearts in the bulletin on Sunday, April 11th. However, we will not print the donor's name nor the amount given.

**If you wish to make this offering, please fill out this form and return it with your donation to the Parish Office by noon, Monday, March 29th. You can also mail it to us: 313 Circle Drive, Hartland, WI 53029**

Name of Donor \_\_\_\_\_

In Memory of those Deceased \_\_\_\_\_

Blessing Recalled \_\_\_\_\_

Special Intention \_\_\_\_\_

Amount Enclosed \$ \_\_\_\_\_

PLEASE PRINT – THANK YOU



# THE GIFT OF GIVING DURING LENT



Welcome to this year's window of opportunity to pray for, and give alms to, the Catholic Stewardship Appeal. Gina and I liken the Archdiocese of Milwaukee to a harbor populated by boats that represent the several ministries operating under Archbishop Jerome ListECKI's pastoral care. Among the 'boats' are parish ministries, evangelization efforts, Catholic schools, religious education programs, religious formation of our priests and deacons and the fostering of parish leadership, all of which the Appeal helps to support. When the tides of prayer and almsgiving come into the harbor all the boats there will be raised. We hope that you might join us by adding your cup, jug or bucket of water to the tide of support this year so that the various Archdiocesan ministries may be lifted up to continue serving the greater glory of God. Who would not wish to help make these things happen? Please pray for the success of the Appeal and the myriad of ministries that are enhanced by it. Blessings on you for anything you may be able to do on behalf of the Appeal.

Yours in Christ,

Dave & Gina Vogt  
St. Charles Parish Catholic Stewardship Appeal Advocates

## ST. VINCENT de PAUL SOCIETY



### FOOD PANTRY NEEDS: \$10 gift cards purchased at local grocery stores

Lenten Rice Bowl donations received by St. Charles' SVdP will help those in your community who struggle to survive on limited incomes. Your neighbors are the elderly on fixed incomes, families carrying the burden of unemployment or underemployment, and others who believe they have nowhere to turn for help. Through your donations, our members bring the light of Christ to those in need of hope. Thank you for helping us help those in need.

The food pantry is located at 229 Lawn Street, Hartland. It is open Tuesday mornings between 10 AM and noon. It is also open on the second and fourth Tuesday evening of the month between 5:30 PM and 7PM. Masks are required. If you need other assistance or are interested in becoming a member of SVdP please contact us at 262-367-0800.

*The food pantry will close when Arrowhead Schools close for inclement weather or when the food pantry manager deems conditions are unsafe.*

**REMEMBER TO SMILE FIRST**

St. Charles recently received a \$388.41 donation from AmazonSmile! If you're looking for an easy way to support St. Charles, all you have to do is visit AmazonSmile when you want to purchase items from Amazon. Select your charity to raise money for St. Charles. We call this "effortless fundraising!"

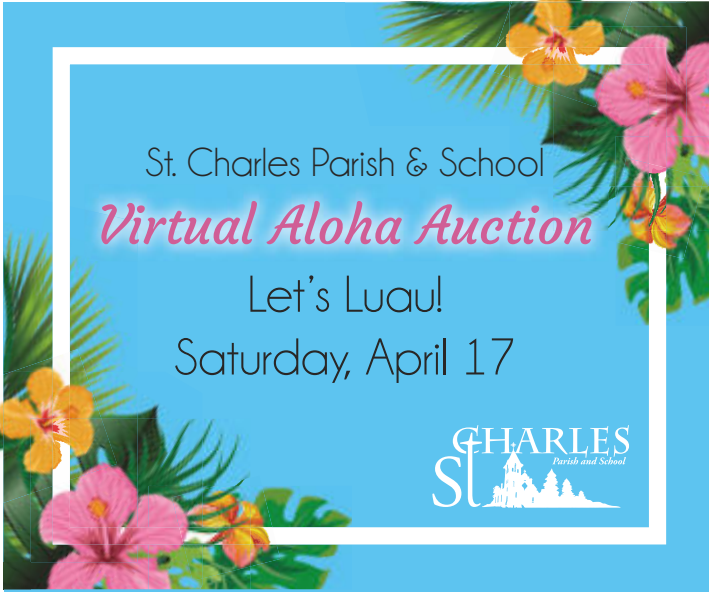
Haven't set up your account yet? Go to AmazonSmile and designate St. Charles Catholic Parish and School! Amazon will donate 0.5% of the purchase price of your items to St. Charles School. Thank you in advance for your support!



**PARISH SUPPORT FOR THE WEEKEND OF JANUARY 31ST**  
FISCAL YEAR BEGAN JULY 1ST

2020-2021	
Envelopes.....	\$22,075.00
Offertory.....	\$1,081.10
Weekend Total.....	\$23,156.10
E-Giving.....	\$13,529.00
YTD.....	\$1,378,377.81

2019-2020	
Envelopes.....	\$21,135.00
Offertory.....	\$1,864.31
Weekend Total.....	\$22,999.31
E-Giving.....	\$8,889.60
YTD.....	\$1,274,604.39



**ALL PARISHIONERS ARE WELCOME!**

Registration is open for the Virtual Aloha Auction on Saturday, April 17! It's free to register, and anyone can participate! Please visit our website for more information and to register by March 31.

New this year — become a Champion for St. Charles! Form a team of up to ten people and compete against other Champions to raise the most money for a fun prize. This is a fun way to get together in person or virtually to support our parish and school!

Lu'WOW Party Boxes are available to purchase for a taste of Hawaii! Boxes are available for 4 or 10 people. Supplies are limited, so if you're interested in some sweet treats and goodies, be sure to purchase a box soon!

Thank you for your continued support!



**GET YOUR TICKETS NOW!**

Grand Raffle Tickets are available for your chance to win \$3,000! Tickets are \$25 each or 5 for \$100. Only cash or checks made payable to St. Charles can be accepted. Please visit our Parish Office to purchase your tickets or [purchase them after all Masses the weekend of March 20th & 21st.](#) This is open to everyone to participate in and win!

Are you interested in helping plan future auctions? If so, we would love your help! Please contact our School Office at 262-367-2040 to learn more.

Thank you for supporting our auction this year!



**MEN OF CHRIST CATHOLIC CONFERENCE**

Saturday, March 20, 2021

St. Charles Parish

313 Circle Drive, Hartland 53029

Holy Mass 8:00 am; Event Begins at 8:50 am,  
Concludes with Opportunity for Fellowship  
at 12:30 pm

We are summoned to a renewed conversion to Jesus Christ, which we will accomplish through authentic friendship with God and with one another. Join us on this journey.



**Kevin O'Brien**  
is a founder and president of Men of Christ, the father of seven, a former NFL player and today a business executive.

**Jason Jones**  
lost a daughter to an abortion he decried and today is an outspoken pro-life author and activist.



**Chris Stefanick**  
is the founder of Real Life Catholic and an inspiring leader for Catholic men and fathers.

**Archbishop Jerome ListECKI**  
of Milwaukee, a long-time friend of Men of Christ, will close our conference and lead us forward.



This is a FREE event but you must register at <https://menofchrist.net> or on the parish website under "News" if you wish to attend in person.

This is due to social distancing guidelines.  
Livestreaming from home needs no registration.

When on the [menofchrist.net](https://menofchrist.net) registration page please scroll to the bottom of the page and click on the Hartland, St. Charles link.



## KNIGHTS OF COLUMBUS®

Knights of Columbus 3562 Kettle Moraine Council

### CHARITY MEAT RAFFLE

Saturday, March 27th

12 Noon until 4:00 pm

Gina's Sports Dock

W278 N2345 Prospect Ave. on Pewaukee Lake

#### Four (4) Major Raffles Per Hour

Pork Ribs, Surf & Turf, Porterhouse, Ribeye or T-Bone Steaks, Brats, Bacon and Beef Brisket Meals  
Raffle Tickets 1/\$1, 6/\$5 and 13/\$10

#### Three (3) or Four (4) Paddle Raffles/Hour

packages including Stevens Point Beer, Old Dutch Chips & Salsa, Klements Summer Sausage.  
Paddles are \$1

#### Basket Raffles

Need not be present to Win – Winners Picked at 4:00 PM  
Bloody Mary Basket - \$100+ Value  
Wine Basket - \$100+ Value  
Tickets are \$5 or 5/\$20

#### 50/50 Cash Raffle

Need not be present to Win – Winners Picked at 4:00 PM  
\$10 Square, win up to \$500!

*All profits benefit the Knights of Columbus Charity Fund which aids those in need due to tragedy, mental disabilities or hunger.*

*Thanks to our sponsors for their support! Gina's Sports Dock, Albrecht's Sentry, Stevens Point Brewery, The Beer Depot and Old Dutch Chips.*

**Tailgate in your driveway or at the ballpark!  
Welcome back Spring and Baseball!**



## REDEMPTORIST RETREAT CENTER

REST · REFLECT · RENEW

### WEEKEND SILENT PREACHED RETREATS FOR WOMEN

March 19-21, 2021 or March 26-28, 2021

### WEEKEND SILENT PREACHED RETREATS FOR MEN

April 30-May 2, 2021

“Living in a Time of Plentiful Redemption”

Redemptorist Retreat Center  
1800 N Timber Trail Lane, Oconomowoc

Although many parishes have scheduled to attend retreats on specific weekends as a group, individuals or groups from any parish are free to choose to attend a retreat on any of the indicated weekends.

The silent weekend preached retreat offers time for private prayer and rest, group meditation, Spiritual Conferences, daily Eucharist, an opportunity for the Sacrament of Reconciliation, spiritual consultation, Adoration of the Most Blessed Sacrament, Devotion to Our Mother of Perpetual Help, Lectio Divina, and enjoying the beautiful grounds.

To register by phone, call 262-567-6900, by email [rrc@redemptoristretreat.org](mailto:rrc@redemptoristretreat.org) or online at <https://www.redemptoristretreat.org/shop>.

Arrival/Check-in begins at 6:15 pm on Friday, followed by welcoming/orientation at 7:30 pm (Note: No evening meal is served on Friday). The retreat concludes after the noon meal on Sunday.

#### FUTURE RETREATS AT THE REDEMPTORIST RETREAT CENTER

#### Holy Week Silent Preached Retreat

March 29 - April 3, 2021

Theme: "Walking With Jesus to Jerusalem and Redemption"  
Presenter: Fr. Richard Thibodeau, C.Ss.R

#### Days of Prayer and Reflection

#### "Taking Time to Name, Claim, Reframe our Grief"

Wednesday, April 7, 2021

Presented by: Peggy Weber, RN, MSN

#### Midweek Silent Preached Retreat for Women

April 20 - 22, 2021

Theme: "Living in Joyful Hope"

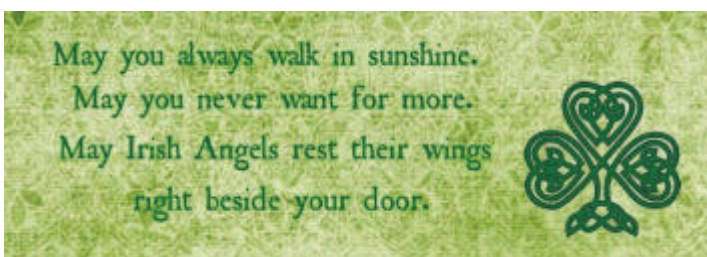
To register for a retreat, visit [www.redemptoristretreat.org/shop](http://www.redemptoristretreat.org/shop)

### POSITION OPPORTUNITY



Holy Hill is seeking a highly responsible individual to prepare for Mass and oversee the care of their worship spaces in the role of Weekend Sacristan.

For more information, visit [ArchMil.org](http://ArchMil.org) and search under "careers."



**Steve & Joyce BERGELIN**  
www.SteveandJoyceBergelin.com

**REALTY EXECUTIVES**  
INTEGRITY  
(262) 424-8753

**TODD WANGERIN ELECTRIC, Inc.**  
Free Estimates - Licensed - Insured  
Over 20 years experience  
Todd Wangerin 262-719-4411  
twelectric4411@att.net

**BIEBEL'S True Value.**  
Hardware & Rental  
HARTLAND  
580 Hartbrook Dr. • 369-1070

**Oconomowoc Landscape Supply & Garden Center**  
Landscape Supplies • Annuals  
Perennials • Trees & Shrubs  
Increase your Home's Value Enjoy a Beautiful Landscaped Yard  
262-567-1777  
www.olandscape.com • Corner of K & 67 at bypass

**We Help You Travel Better!**  
262.567.6658  
TLJourneys.com  
TRAVEL LEADERS

Complete line of Hispanic & American Groceries.  
We specialize in fresh corn tortillas, Mexican bakery and our famous El Rey Tostadita Chips.  
Serving Milwaukee Since 1978  
El Rey Family Market 3520 W. Oklahoma Ave. 414-943-1940  
El Rey Plaza 3524 W. Burlington St. 414-943-1816  
El Rey Food Mart 1322 W. Burlington St. 414-388-7786

**Holzhauser, Hewett & Barta s.c.**  
Orthodontic Care For Children And Adults  
Daniel Holzhauser DDS MS | Charles Hewett DDS MS | Joshua Barta DDS MS  
520 Hartbrook Dr., Hartland  
2516 N. Grandview Blvd, Waukesha  
10225 W. Capitol Dr., Wauwatosa  
262-567-7076  
262-547-6365  
414-463-5700

**BUNZEL'S OLD FASHIONED MEAT MARKET**  
Fresh Custom Cut Choice Meats  
Party Trays • Catering  
Thank You For Supporting A Family Tradition  
9015 W. BURLEIGH 873-7960  
www.bunzelmeats.com

**Lake Country Financial Group LLC**  
Steven R. Seibel, CLU, ChFC, LUTCF  
Financial Advisor  
(262) 646-4115  
Securities offered only through Chicago Investments, Inc., a registered broker-dealer and member FINRA/SIPC. Lake Country Financial Group LLC and CoreCap are separate and unaffiliated entities. Advisory services offered through Chicago Advisors, Inc., a registered investment advisor.

**FOOT & ANKLE Associates of Wisconsin**  
Parish Member  
Dr. Amy Galati  
Call: (262) 542-3779  
www.footandanklewi.com

**KOWAL INVESTMENT GROUP**  
The Retirement Specialists  
Aaron T. Kowal, CFP®  
W238N1660 Busse Rd., Ste. 100, Waukesha, WI 53188  
262-522-4040  
www.kowalinvestmentgroup.com  
Securities offered through Raymond James Financial Services Inc. Member FINRA and SIPC. Investment Advisory Services offered through Raymond James Financial Services Advisors, Inc. and Kowal Investment Group, LLC. Kowal Investment Group, LLC is not a registered broker-dealer and is independent of Raymond James Financial Services.

**Hartland Family CHIROPRACTIC**  
211 Cottonwood Ave, Hartland  
(262) 367-7424  
www.hartlandchiro.com  
Dr. Hans Halaska

Call us to schedule your free, no obligation, financial check-up today.

**Pat's Heating & Air Conditioning**  
30 YEARS OF EXCELLENCE  
262-567-7499  
OCOMOWOC  
www.patsheating.com

**PROTECTING SENIORS NATIONWIDE MEDICAL ALERT SYSTEM**  
\$29.95/MO  
BILLED QUARTERLY  
CALL NOW! 1.877.801.7772 - WWW.24-MEDALARM.COM

**Hartland Family CHIROPRACTIC**  
211 Cottonwood Ave, Hartland  
(262) 367-7424  
www.hartlandchiro.com  
Dr. Hans Halaska

**TOWN BANK**  
AWINTRUST COMMUNITY BANK  
800-433-3076  
www.townbank.us

**WE'RE HIRING AD SALES EXECUTIVES**  
• Full Time Position with Benefits  
• Sales Experience Preferred  
• Paid Training  
• Overnight Travel Required  
• Expense Reimbursement  
CONTACT US AT careers@4LPI.com www.4LPI.com/careers

**NEVER MISS A BULLETIN!**  
Sign up to have our weekly parish bulletin emailed to you at [www.parishesonline.com](http://www.parishesonline.com)

**TOWN BANK**  
AWINTRUST COMMUNITY BANK  
800-433-3076  
www.townbank.us

**BUDGET BLINDS of LAKE COUNTRY**  
262-309-6710

**R&R INSURANCE**  
Rick Kalscheuer  
Parish Member  
800.566.7007 | MyKnowledgeBroker.com

**MICHAEL J. FINN S.C.**  
ATTORNEY AT LAW  
PARISH MEMBER  
262-367-8485  
mjfinnsc@sbcglobal.net  
163 E. Capitol Dr., Hartland, WI 53029

**CHARLES School of Learning**  
St. Charles School... We choose Christ in learning, living, & values in the light of our faith.  
262-367-2040  
www.stcharlesschoolhartland.com

**VISU-SEWER, INC.**  
262-695-2340  
Professional Sewer Inspection, Maintenance and Rehabilitation Services  
Parish Members  
www.visu-sewer.com

**DON CULL EXCAVATING**  
W298 N9248 Center Oak Rd  
Septic & Mound Systems Grading  
966-7038  
MPRS 221589

**LAKE COUNTRY REAL ESTATE**  
Scott Heyerdahl  
262-719-6970  
Sheyerdahl@firstweber.com

**SPREAD THE WORD**  
A Thriving, Vibrant Community Matters  
SUPPORT OUR ADVERTISERS

**CHARLES School of Learning**  
St. Charles School... We choose Christ in learning, living, & values in the light of our faith.  
262-367-2040  
www.stcharlesschoolhartland.com

**JENSON MOTORS Auto - Truck Repair**  
Hours: Mon-Fri 7:30-5:30  
Proprietor: Guy Jenson  
262-367-5556  
364 Cottonwood Ave., Hartland, WI

**Hartland Terrace Assisted Living**  
• RN Lead 24-Hour Elite Care Team  
• Full Continuum of Care • Memory Care  
• All Inclusive Pricing • Private Studios  
• Family Centered Care Model  
327 North Avenue • Hartland | 262-369-4391  
www.hartlandterrace.com

**Henry & Diane Barwinski, Co-Owners**  
**ECHO LAWN'S**  
A Complete Lawn, Landscape, and Snow Removal Service  
Milwaukee Lake Country  
414-462-6670 262-695-8152

**PATRIOT PLUMBING, INC.**  
COMMERCIAL AND RESIDENTIAL  
www.patriotplumbingwi.com  
Earl Cull • 262-966-2284  
MP221857 107112RT 107113RMT

**Culver's**  
701 Industrial Ct., Hartland  
262-367-5800

**KLINK'S KARPETS, INC**  
Hartland's Floor Covering Center  
Family Owned & Operated for over 47 Years  
Carpeting & Hard Surfaces  
107 North Ave. Hartland, WI  
367-4670 Parish Member

**FOX BROS**  
306 Cottonwood  
262-367-2922  
1700 DOWAN ST  
COLUMBIAN GROVE  
262-567-8376  
Open 7 days a week  
6am-9pm

**Henry & Diane Barwinski, Co-Owners**  
**ECHO LAWN'S**  
A Complete Lawn, Landscape, and Snow Removal Service  
Milwaukee Lake Country  
414-462-6670 262-695-8152

**AVAILABLE FOR A LIMITED TIME**  
**ADVERTISE YOUR BUSINESS HERE**  
Contact Jeff Tkachuk to place an ad today!  
jtkachuk@4LPI.com or (800) 950-9952 x2513

**KLINK'S KARPETS, INC**  
Hartland's Floor Covering Center  
Family Owned & Operated for over 47 Years  
Carpeting & Hard Surfaces  
107 North Ave. Hartland, WI  
367-4670 Parish Member

**DAVE PERRY**  
heating • cooling  
Proudly Serving the Lake Country Area for more than 20 years  
Heating • Air Conditioning • Geothermal New Construction • Replacement  
262.966.1959  
www.daveperryheatingandcooling.com

**Too Sick for Mass?**  
SUPPORT OUR PARISH NO MATTER WHERE YOU ARE!  
Sign-up to get your bulletin delivered right to your inbox!  
www.parishesonline.com

**SPRUNG ARMSTRONG AIR**  
Heating, Sheet Metal & Well Pump Service  
7024 Main St., Merton  
538-1400  
Service • Repair & New Construction  
Residential & Commercial  
Parish Members

**Lake Country Eye Care**  
580 Hartbrook Dr. • Hartland, WI 53029  
Amber A. Dentz, OD - Parishioner  
www.lakecountryeyecare.com  
262-367-6610

**Generations DENTAL**  
Jim Muenchberger, D.D.S. and Kelly Muenchberger, D.D.S. Parish Members  
301 E. Capitol Dr. Hartland, WI 53029  
Office 262-367-2924  
Closed on Wed & Thu

**Palmer's STEAKHOUSE**  
 www.Palmersteakhouse.com  
 122 E. Capitol Dr. • Hartland, WI  
 262-369-3939

**Bob Hamilton**  
 207 E. CAPITOL DRIVE • HARTLAND, WI 53029  
 262.367.2312  
 BHAMILTO@emfam.com

**EH**  
**Emanuele & Haut, CPAs, SC**  
 Certified Public Accountants  
 Parish Member  
 262.367.1040  
 sam@ehcpas.com

**SUPPORT YOUR LOCAL PARISH.**  
 Buy a bulletin ad space today!

**REICHL & KOLSTAD ORTHODONTICS**  
 Dr. Peter Reichl & Dr. James Kolstad  
 look forward to meeting you!  
 Offering Traditional Braces & Invisalign  
 Located in Waukesha, Mukwonago & Hartland  
**262-547-2827**  
 www.ReichlKolstadOrtho.com

**UnitedDrivingSchoolWI.com**  
**ENROLL TODAY!**

**Wolf Electric LLC**  
 Commercial, Industrial, Residential  
**Garrett Wolf** • Master Electrician/Parishioner  
 Commercial • Industrial • Residential  
 (262) 224-7310 • www.wolfelectricllc.com

**ADT-Monitored Home Security**  
 Get 24-Hour Protection From a Name You Can Trust

- Burglary
- Fire Safety
- Flood Detection
- Carbon Monoxide

1-855-225-4251

**WEALTHSPIRE ADVISORS**  
**Brion Collins**  
 CFP® Professional & Parishioner  
 262.326.6090 | www.wealthspire.com

*We salute the St. Charles community and all who make such a profound difference.*



Wealthspire Advisors is the common brand and trade name used by Sunray Advisory LLC and Wealthspire Advisors, LP, separate registered investment advisors and subsidiary companies of NFP Corp. Securities, when offered, are offered through an affiliate, Wealthspire Capital, LLC, member FINRA/SIPC. Certified Financial Planner Board of Standards, Inc. (CFP Board) owns the CFP® mark in the United States.

**What Will Be Your Legacy?**  
 If you value your faith and your family, I welcome the opportunity to share my faith-based perspective in union with my financial experience in order to co-create a personal legacy strategy. I can assist with: Portfolio Management | Retirement Planning | Financial & Legacy Strategies | Special Needs Planning

**Kurt Maltby, CFP®, CHsNC®**  
 CERTIFIED FINANCIAL PLANNER™  
 Associate Vice President, Financial Advisor  
**Morgan Stanley**  
 20975 Swenson Drive, Waukesha  
 Phone: (262) 523-8303 | NMLS # 1504808  
 advisor.morganstanley.com/the-riverwood-wealth-management-group



Morgan Stanley and its Financial Advisors do not provide tax or legal advice. Individuals should seek advice based on their particular circumstances from an independent tax advisor.  
 Morgan Stanley Smith Barney LLC. Member SIPC.

**EVERETT-LUKO FUNERAL HOME**  
 262-367-5505 • 262-367-0545 Fax  
 365 Cottonwood Ave., Suite A • Hartland, WI 53029  
 mark@hpcpa.tax • www.hpcpa.tax

**PASSAGES**  
 Cremation Service

**CARPET PLUS, INC.**  
 We Bring the Showroom to You!  
 (414) 573-0105  
 Dan Taylor, Parish Member

**AVAILABLE FOR A LIMITED TIME**  
**ADVERTISE YOUR BUSINESS HERE**  
 Contact **Jeff Tkachuk** to place an ad today!  
 jtkachuk@4LPI.com or (800) 950-9952 x2513

**FREE AD DESIGN WITH PURCHASE OF THIS SPACE.**  
 - 800-950-9952 -

**H+p** CERTIFIED PUBLIC ACCOUNTANTS  
 Mark G. Hayes, CPA  
 262-367-5505 • 262-367-0545 Fax  
 365 Cottonwood Ave., Suite A • Hartland, WI 53029  
 mark@hpcpa.tax • www.hpcpa.tax

**payrollDATA**  
 1020 James Drive, Ste O  
 Hartland, WI 53029  
 262-563-5150  
 www.payrolldata.com

**PAUN Construction**  
 Specializing in Masonry Residential & Commercial  
 W300 N7741 Christine Ln., Hartland, WI 53029  
 Robert J. Paun (262) 326-8043  
 www.paunconstruction.com  
 mail@paunconstruction.com

**SPREAD THE WORD**  
 A Thriving, Vibrant Community Matters

**SUPPORT OUR ADVERTISERS**

**DUNN INVESTMENT MANAGEMENT GROUP**  
 of RBC Wealth Management  
**James P. Dunn**  
 Managing Director - Financial Advisor  
 Senior Portfolio Manager - Portfolio Focus

18500 West Corporate Drive, Ste. 100  
 Brookfield, WI 53045  
 Call (262) 395-1101 for an appointment  
 james.dunn@rbc.com

- Customized portfolio management & investment consulting for individuals & institutions
- Comprehensive investment advice & retirement planning
- Recently retired or changed jobs? Providing specialized 401K rollover solutions

A Division of RBC Capital Markets LLC NYSE/FINRA/SIPC

**SPORTS GRILL**  
 PIZZA • FRIDAY FISH FRY • SANDWICHES  
 \*\$5.00 OFF ANY 16" PIZZA  
 \*SUNDAY'S "KIDS EAT FREE" WITH ADULT PURCHASE  
 We do Parties & Catering!  
 Not valid with any other offers or coupons  
**369-0079**  
 300 COTTONWOOD • HARTLAND  
 PARISH MEMBER

**PAUN Construction**  
 Specializing in Masonry Residential & Commercial  
 W300 N7741 Christine Ln., Hartland, WI 53029  
 Robert J. Paun (262) 326-8043  
 www.paunconstruction.com  
 mail@paunconstruction.com

**GOOD TIMES DAY CAMP**  
 262-521-8100 • WWW.GOODTIMESWI.COM

Where happiness and wonderment come to play!

- Now Enrolling Ages 3 - 15
- 15 Acres & 2 Heated Pools
- Many Athletic Fields
- Swimming Lessons Included
- Field Trips Included
- Bussing to/from Hartland
- Bussing to/from Brookfield
- Worry Free Scheduling
- Low Ratio's
- Accepting Counselor Applications

Where challenges are met, goals are accomplished, and friendships and memories made last a lifetime!

**ADVERTISE YOUR BUSINESS HERE**  
*Your Community is Looking!*

Call LPI today for advertising info  
 (800) 950-9952

*Please Support these*  
**CONTRACTORS**  
 Thank You to these contractors helping St Charles grow!

**NELCO ELECTRIC, INC.**  
 GERMANTOWN, WI  
 Commercial • Industrial • Residential  
 24 Hour Service 262-502-9950  
 WWW.NELCOELECTRIC.COM  
 Barb Jarchow Parishioner

**zimmerman**  
 ARCHITECTURAL STUDIOS, INC.  
 200 West Hill Verona Avenue  
 Milwaukee, WI 53227 | zimmerman.com  
 VERONA (414) 438-8240  
 BROOKFIELD (414) 438-0500

**Lifetime Door Co**  
 GARAGE DOORS • DOOR OPENERS • REPAIRED OR REPLACED  
 SALES • SERVICE • INSTALLATION  
**262-567-9203**

**Vicki Marciniak**  
 When it comes to your home, it's more than just business, it's personal.  
 Cell: (414) 243-5584  
 vmarciniak@firstweber.com  
 www.VickiMarciniak.FirstWeber.com

**FRONTIER**  
 TITLE & CLOSING SERVICES  
 1130 James Drive, Hartland, WI 53029  
 Office: 262-361-4466 Fax: 262-361-4462  
 www.frontiertitlellc.com  
 Frontier Title & Closing Services, LLC  
 Lake Country's Most Experienced Title & Closing Company  
 Specializing in Residential, Commercial & New Construction Transactions  
 Serving the Real Estate Community!