



*At St. Charles, all are invited to  
meet Christ, know Christ,  
love Christ and serve Christ.*

**February 14, 2021  
SIXTH SUNDAY IN ORDINARY TIME**



*6th Sunday*  
**IN ORDINARY TIME**

I turn to you, Lord, in time of trouble, and  
you fill me with the joy of salvation.

Ps 32:1-2, 5, 11



313 Circle Drive, Hartland, WI 53029 • 262-367-0800  
[www.stcharleshartland.com](http://www.stcharleshartland.com) • email: [parish@stcharleshartland.com](mailto:parish@stcharleshartland.com)



# WELCOME TO ST. CHARLES - WE ARE HERE FOR YOU



PASTOR  
Fr. Ken Omernick



ASSOCIATE PASTOR  
Fr. Nick Baumgardner



PERMANENT DEACON  
Rob Mitchell

## ST. CHARLES STAFF TEAMS

**TRANSITIONAL DEACON:** Tim Schumaker  
tschumaker@stcharleshartland.org

**TEACHING PARISH SEMINARIANS:**  
Robert Ross, rross@sfs.edu  
David Sweeney, dsweeney@sfs.edu

### SCHOOL TEAM 262-367-2040

Principal/Team Lead: Dan Garvey, Ext. 208,  
dgarvey@stcharleshartland.org  
Advancement Officer: Allison Caswell, Ext. 227,  
acaswell@stcharleshartland.org  
School Administrative: Lisa Moehrke, Ext. 206,  
school@stcharleshartland.com  
School Administrative: Karen Dejewski, Ext. 206,  
school@stcharleshartland.com

### COMMUNICATION & STEWARDSHIP TEAM

Assist. to the Pastor/Team Lead: Terrie Carew, Ext. 224,  
tcarew@stcharleshartland.org  
Communications Coordinator: Allison Caswell, Ext. 215,  
acaswell@stcharleshartland.org  
Graphic Design Specialist: Renee Krier, Ext. 224,  
rkrier@stcharleshartland.org  
Welcome Receptionist: Debra Hertel, Ext. 226,  
dhertel@stcharleshartland.org  
Parishioner Engagement: Nancy Neuser,  
nneuser@stcharleshartland.org

### DISCIPLESHIP TEAM

Associate Pastor/Team Lead: Fr. Nick Baumgardner,  
nbaumgardner@stcharleshartland.org  
Adult Discipleship/Safeguarding: Jess Panlener, Ext. 214,  
jpanlener@stcharleshartland.org  
Adult Small Groups: Maria Notch, Ext. 220,  
mnotch@stcharleshartland.org  
Children's Discipleship: Alicia Van Hecke, Ext. 205,  
avanhecke@stcharleshartland.org  
Student Discipleship Lead: Nick Scanlan, Ext. 209,  
nscanlan@stcharleshartland.org  
Student Discipleship Co-lead: Rachel Heffron, Ext. 221,  
rheffron@stcharleshartland.org  
Discipleship/Administrative: Trish Gilchrist, Ext. 230,  
tgilchrist@stcharleshartland.org  
Discipleship/Administrative: Laura Zgrabik, Ext. 212,  
lifeteen@stcharleshartland.org

### OPERATIONS TEAM

Operations Manager/Team Lead: Marge Beck, Ext. 201,  
mbeck@stcharleshartland.org  
Facilities Manager: Mike Cattani, Ext. 210,  
mcattani@stcharleshartland.org  
Maintenance Manager: Tim Orzechowski, Ext. 217,  
torzechowski@stcharleshartland.org  
Bookkeeping Specialist: Dee Anne Hamer, Ext. 200,  
dhamer@stcharleshartland.org  
Operations Administrative: Joann Papa, Ext. 226,  
jpapa@stcharleshartland.org  
Operations Administrative: Kathy Gillstrom, Ext. 200,  
kgillstrom@stcharleshartland.org  
Cornerstone/Safeguarding: Karen Dejewski,  
cornerstoneproject@stcharleshartland.org

### WORSHIP TEAM

Worship Lead: Peg Kasun, Ext. 225,  
pkasun@stcharleshartland.org  
Permanent Deacon: Deacon Rob Mitchell,  
rmitchell@stcharleshartland.org  
Liturgist, M.Div.: Elizabeth Thompson, 262-367-6704  
ethompson@stcharleshartland.org  
Musician: Scott Currier, Ext. 225,  
scurrier@stcharleshartland.org  
Worship Assistant: Kathleen Latzke-Daley,  
kldaley@stcharleshartland.org  
Wedding Coordinator: Dee Anne Hamer, Ext. 222,  
dhamer@stcharleshartland.org



THE GREATEST  
**GOOD**  
IS WHAT WE DO  
FOR ONE ANOTHER.  
MOTHER TERESA

# WELCOME TO ST. CHARLES - WE ARE HERE FOR YOU

PARISH OFFICE: **262-367-0800**, Mon. - Fri., 8 am - 4 pm  
EMAIL US: [parish@stcharleshartland.org](mailto:parish@stcharleshartland.org)  
WEBSITE & LIVESTREAM: [www.stcharleshartland.com](http://www.stcharleshartland.com)  
FOYER HOURS FOR DONATIONS: Mon. - Fri., 7 am - 3:30 pm  
PARISH SCHOOL: 262-367-2040, [school@stcharleshartland.com](mailto:school@stcharleshartland.com)

## SACRAMENT OF THE SICK

By appointment with Fr. Ken or Fr. Nick (schedule by calling the Parish Office).

## RECONCILIATION

Saturday: 3:30pm - 4:30pm & Thursdays: 5:00pm - 6:00pm or by appointment (schedule by calling the Parish Office).

## TUESDAY TRADITIONAL MASS

The following Tuesdays at 5:30 pm: Feb. 23, March 23, April 27 & May 25.

## JOIN OUR PARISH

Contact the Parish Office during office hours at 262-367-0800 or [parish@stcharleshartland.org](mailto:parish@stcharleshartland.org).

## PLANNING TO BE MARRIED?

Congratulations! Please notify St. Charles at least six months in advance. Weddings may be celebrated on Friday evenings and Saturdays at 11:00am and 2:00pm. Exceptions are made only with the permission of the Pastor. Please contact Dee Anne Hamer at 262-367-0800 Ext. 222.

## ARE YOU EXPECTING OR ADOPTING A CHILD?

St. Charles is honored to serve parents seeking Baptism for their child(ren). To find out more information about our preparation process and to schedule infant/child Baptisms, please contact Jess Panlener at 262-367-0800 Ext. 214.

## BECOMING FULLY CATHOLIC

Are you unbaptized or baptized in a different Christian faith and considering becoming Catholic? Are you a baptized Catholic who did not receive the Sacraments of Reconciliation, Eucharist and/or Confirmation? St. Charles provides an adult formation process that will help you discover Jesus and His Holy Catholic Church. Please contact Jess Panlener at 262-367-0800 Ext. 214.

## SMALL GROUPS

The Small Group movement at St. Charles offers you a way to authentically seek Jesus in small faith sharing communities. Small Groups gather in members' homes throughout Lake Country during Fall and Lent. For more information, please contact Maria Notch at 262-367-0800 Ext. 220.

OUTREACH SERVICES TEAM: Terri Blazek: 262-367-7608, [jtblazek@wi.rr.com](mailto:jtblazek@wi.rr.com)

TO ASK FOR PRAYERS or to be added to the email list, please email: [prayernetwork@stcharleshartland.org](mailto:prayernetwork@stcharleshartland.org)

FOR EMERGENCY PRAYERS, please email: [emergencyprayers@stcharleshartland.org](mailto:emergencyprayers@stcharleshartland.org)

ST. VINCENT DE PAUL: if you need food, shelter or assistance call 262-367-0800 (Parish Office)

NEED HOME COMMUNION (temporarily suspended):  
For information call 262-367-0800 (Parish Office)

## Mass Intentions for the Week of February 14th



### Sunday, February 14 ~ St. Valentine's Day

7:00 am † Mary Burdett  
9:00 am † Bob Eberhardy  
11:00 am Living and Deceased Members of St. Charles  
6:00 pm † Fredrick Jesko

### Monday, February 15

8:30 am † Jack Henkel

### Tuesday, February 16

8:30 am † Mary O'Hara

### Wednesday, February 17 ~ Ash Wednesday

6:30 am † Edward & Sandra Cibula  
8:30 am † Henry Kovalaska  
12:00 pm †  
6:00 pm Living and Deceased Members of St. Charles

### Thursday, February 18

6:30 am † Judy Klink  
8:30 am † Norm Binger

### Friday, February 19

6:30 am Special Intention  
8:30 am † Richard Ducey, Jr.

### Saturday, February 20

8:30 am Special Intention  
5:00 pm † Eric Glowe

### Sunday, February 21

7:00 am † John Dassow  
9:00 am † Brian Gillstrom  
11:00 am † Jack Weissgerber  
6:00 pm Living and Deceased Members of St. Charles

## ARE YOU RECEIVING OUR EMAILS?



Sign Up for  
Parish Emails

St. Charles has started a Friday email blast and special news emails to keep you informed of the latest happenings and worship opportunities. It's easy to get on our email list! Go to the homepage on our website - [www.stcharleshartland.com](http://www.stcharleshartland.com) - and scroll down and click on the yellow button and enter your email. This email list is only for the use of St. Charles emails and not distributed elsewhere.

## Bulletin Advertisers of the Week

Please support our advertisers!



Love one another ...  
just as I have Loved You ...  
John 13:34

**THIS WEEKEND'S GOSPEL MEDITATION**  
**6TH SUNDAY IN ORDINARY TIME**

The Church, as a voice of the Gospel, proclaims the sacredness of all human life. Everyone created by God is fashioned in God's image and has Divine DNA at the center of their soul. God never leaves what God creates but always remains intimately bound to what He has given form. Everyone has a place, and because they have received the gift of Divine Blessing, nobody deserves to feel inferior, unworthy, unwanted, unclean or marginalized. Even the most broken of souls has a place. We, the Body of Christ, have the privilege and responsibility to give voice to the voiceless. The cries of the little one in his or her mother's womb are just as sacred as the cries of one who is homeless and hungry. The migrant deserves our attention as much as the forgotten elderly, and even the prisoner, with a heart hardened by anger and resentment, deserves respect and dignity.

The Gospel of Life is often hard to swallow, and we would rather keep those we consider unclean, different or unfixable in a place by themselves. It is hard to see them with us, but they deserve to be. There is far too much violence in this world, and the result of that violence is the assault on human life. Many are forced to leave the place they call home in search of safer ground, finding few if any along the way who will help them. How different today's Gospel story would be if Jesus gave in to what was politically correct at that time. The leper would have been turned away, and a soul, already beaten down by disease and fear, would have experienced an even deeper wound. Jesus wouldn't have captured much attention from anyone, nor would He have mirrored the Father's compassion and love.

Where do we stand with all of this? Do we at least understand that God's vision is often in conflict with the vision put forth in our world and even the one we advance ourselves? There is no doubt that it is incredibly challenging to find a place for everyone at the table. This challenge is compounded when the systems of operation and structure that are so ingrained in us affirm power and privilege rather than inclusivity and justice. Everything really goes askew when the powerful begin to control who is entitled to wholeness and inclusion and greed becomes a driving force. Prejudice and entitlement raise their ugly heads, and we find ourselves with quite a mess. It's time to admit that things have been a mess for a very long time. The mess needs to be healed, not by erasing it but by allowing God to touch it and make it whole. We need to bring God back to the center of life where God belongs. There are no easy solutions to the world's dilemmas. But, knowing that wholeness, healing, and dignity are worthy pursuits, we can more confidently labor to achieve God's vision.

©LPi



15 minutes each day spent in God's presence – reading, reflecting, responding and resting with his Word – adds up to 90 hours in one year. That is time well spent and a testimony to how a little at a time turns into something remarkable!

**Reflection questions for Sunday, February 21st**



- God promises Noah to use a “bow in the clouds” (a rainbow) as a sign and symbol of His divine pledge to never again allow a world-wide flood to devastate the earth. This is the Bible's first recorded covenant between God and humanity. What do you think of when you see a rainbow?
- Peter teaches that Jesus preached to both the living and the dead – those dead dating back to the days of Noah – and connecting us through baptism. What do you find intriguing about this idea?
- We hear about Jesus' temptation in the desert and his inaugural gospel message to those living in Galilee. Jesus saw repentance as necessary to believe his good news. As we begin the Lenten journey, what aspects of your life require repentance?

**Readings for the Week of February 14th**

- Sunday:** Lv 13:1-2, 44-46/Ps 32:1-2, 5, 11 [7]/1 Cor 10:31-11:1/Mk 1:40-45
- Monday:** Gn 4:1-15, 25/Ps 50:1 and 8, 16bc-17, 20-21 [14a]/Mk 8:11-13
- Tuesday:** Gn 6:5-8; 7:1-5, 10/Ps 29:1a and 2, 3ac-4, 3b and 9c-10 [11b]/Mk 8:14-21
- Wednesday:** Jl 2:12-18/Ps 51:3-4, 5-6ab, 12-13, 14 and 17 [cf. 3a]/2 Cor 5:20-6:2/Mt 6:1-6, 16-18
- Thursday:** Dt 30:15-20/Ps 1:1-2, 3, 4 and 6 [Ps 40:5a]/Lk 9:22-25
- Friday:** Is 58:1-9a/Ps 51:3-4, 5-6ab, 18-19 [19b]/Mt 9:14-15
- Saturday:** Is 58:9b-14/Ps 86:1-2, 3-4, 5-6 [11ab]/Lk 5:27-32
- Next Sunday:** Gn 9:8-15/Ps 25:4-5, 6-7, 8-9 [cf. 10]/1 Pt 3:18-22/Mk 1:12-15



**READ. REFLECT. RESPOND. REST.**

Cut out and keep in your Bible for reference!

## SMALL GROUPS: SEEKING JESUS TOGETHER!



The Small Group movement at St. Charles offers you a way to authentically encounter Jesus through upcoming Sunday Scripture in small, faith-sharing, communities. Small groups gather in members' homes throughout Lake Country during Lent and Fall. Some groups meet all year long. Members share life and faith, reflect on Scripture, and pray for and with one another.

### SMALL GROUP FAQs

#### **How does a Small Group compare to a Bible Study?**

Small Groups go beyond just studying scripture. Members share life and faith, reflect on Sunday Scripture, and pray for and with one another. Small Groups are the place you connect with other growing disciples.

#### **What does a typical Small Group gathering look like?**

Small Groups generally meet regularly at homes throughout the Lake Country area and last for an hour and a half. They include time for fellowship, prayer, and reflection on the upcoming Sunday's Scripture. Together they dig into a deeper understanding of the Lord and seek to apply it to their own lives. Throughout Covid, there are also Small Groups who meet virtually over Zoom or another platform.

#### **How long is my commitment to a Small Group?**

Small Groups typically meet twice a year, for 6-8 weeks. Some groups, however, choose to meet year-round. Traditional Small Groups meet during the Fall and Lenten Seasons.

#### **Am I able to change groups if my schedule or availability change?**

Our desire is to match you with a group that will meet your needs, so we will do our best to find a group that meets your preferences and availability. Please contact Maria Notch at 262-367-0800 Ext. 220 if you need to find another Small Group.

#### **Do I need to bring anything to my Small Group?**

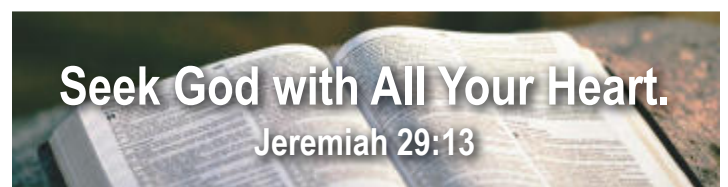
You do not need to bring anything to Small Group, but if you own a Bible, you can bring that. Others utilize the use of a Bible app on their smart phone to follow along with the readings.

#### **Do I have to be Catholic to join a St. Charles Small Group?**

One does not need to be Catholic to join a Small Group. We hope that all members come with a desire to learn and grow together in faith in Jesus Christ and understand that all St. Charles Small Groups do hold to all the tenets of the Catholic Faith.

#### **How do I join a group?**

There are two ways: prior to the Fall and Lent Small Group seasons, we offer an interest sign up that is promoted through the parish bulletin, website and Mass announcements. Interested people are matched to groups with openings based on their schedule and availability. **You may also contact Maria Notch 262-367-0800 Ext. 220 at any time to inquire about joining a group.** Small Groups are filled on a first come, first serve basis.



*"These Small Groups are needed and appreciated now more than ever! People are craving personal interaction with others, authentic friendship, and sense of community. To be able to experience that while being encouraged in your faith and growing together in prayer is a beautiful thing!"*

*Maria Notch  
St. Charles Staff - Adult Small Groups*

## ASH WEDNESDAY NOON MASS ADDED

This Wednesday, February 17, Ash Wednesday is the beginning of the 40-day season of Lent, which is marked by repentance, fasting, reflection and ultimately the celebration of Easter. We normally have three Masses on that day - 6:30 am, 8:30 am and 6:00 pm. Due to the social distancing requirements, the 8:30 am Mass will be reserved for our St. Charles School Students only. For parishioners who normally come to the 8:30 am Ash Wednesday Mass, we are adding another Mass at Noon. Please see future bulletins and our parish website for additional information.



## WE ARE CALLED

Join our faith community – and more than 12,000 Catholic communities across the United States – in a life-changing Lenten journey with CRS Rice Bowl. During the 40 days of Lent, we will reflect on how hunger and malnutrition affect our human family and on the need to take action to end this global injustice. Visit [crsricebowl.org](http://crsricebowl.org) to learn more.

**Operation Rice Bowl begins at St. Charles on Ash Wednesday and ends on Holy Thursday. There will be a reverse collection of the Rice Bowls this weekend at all Masses.** Instead of putting your pocket change into the family penny jar, please consider giving this Lent to other families who need your help. Thank you for your support of this program!

## PLEASE BRING IN YOUR OLDER PALMS NOW UNTIL FEBRUARY 14TH!

Parishioners who have blessed palms from previous years may return them to St. Charles through the **weekend of February 14th**. There will be baskets on the tables in the Narthex available for these. The blessed palms will be burned and the ashes used to mark penitents on Ash Wednesday. Thank you!

## Ash Wednesday

### DISTRIBUTION OF ASHES IN TIME OF PANDEMIC

During this time of pandemic, the Holy See has modified the method of distributing the ashes as the following:

The Priest says the prayer for blessing the ashes. He sprinkles the ashes with holy water without saying anything. Then he addresses all those present and only once says the formula as it appears in the Roman Missal, applying it to all in general: “Repent, and believe in the Gospel,” or “Remember that you are dust, and to dust you shall return.”

The Priest then cleanses his hands, puts on a face mask, and distributes the ashes to those who come to him or, if appropriate, he goes to those who are standing in their places. The Priest takes the ashes and sprinkles them on the head of each one without saying anything. These changes minimize the necessity of physical contact between minister and recipient and remove the need for the minister to speak while in close proximity to the recipient. The distribution of ashes via sprinkling is a common practice in some countries but is not well known here. For more information, visit the website to view a video from Bishop Haines explaining how this will be done.

*From the Congregation for Divine Worship and the Discipline of the Sacraments, 12 January 2021.*

*Robert Card, Sarah, Prefect  
+Arthur Roche, Archbishop Secretary*

How ashes are distributed this year will look a little different. For more information, visit the website to view a video from Bishop Haines explaining how this will be done.



## EUCCHARISTIC ADORATION DURING LENT

St. Charles is offering additional hours of Eucharistic Adoration on Wednesday and Thursday mornings during Lent from 7-8:15 a.m. Adoration will be held in the Chapel and will begin right after 6:30 a.m. Mass. This is a wonderful opportunity to spend some extra time with Jesus during Lent. Please consider signing up for a time slot; you can register for one or more days. To sign up, please visit the parish website. If registration fills up for a day you are interested in, please contact Elizabeth Meier at [ermeier114@gmail.com](mailto:ermeier114@gmail.com); additional seating will be available. We hope you will join us!

## CELEBRATING LENT AND A NEW CHURCH

### The Gift of Sunday Lenten Mission Wednesday, March 3, 2021 7:00-8:30 pm

Parishes throughout the Archdiocese will be hosting Lenten Missions on the evening of March 3, 2021. The Mission is based on The Gift of Sunday, a theological reflection issued by Archbishop Jerome Listekci. The evening will be held in the context of a prayer service and will highlight the importance of Sunday Mass in living out our faith on a daily basis. Due to limited seating, people are asked to register in advance for the Lenten Missions at [www.archmil.org/Lenten-Missions](http://www.archmil.org/Lenten-Missions). Contact Rosalita Villa at [villar@archmil.org](mailto:villar@archmil.org) or 414-758-2217.

Lenten Missions in English		
City	Parish	Presenter
Beaver Dam	St. Katharine Drexel	Fr. Timothy Bickel
Elkhorn	St. Patrick	Fr. Tim Kitzke
Fond du Lac	Holy Family	Fr. John Burns
Grafton	St. Joseph	Fr. Aaron Laskiewicz
<b>Greendale</b>	<b>St. Alphonsus</b>	<b>Fr. Ken Omernick</b>
Kenosha	St. Mary	Fr. Paul Hartmann
Menomonee Falls	St. James	Bishop Jeffrey Haines (live-streamed)
Milwaukee	St. Francis of Assisi	Bishop Joseph Perry
Milwaukee	St. Sebastian	Fr. Jim Volkert
Milwaukee	St. Veronica	Fr. Michael Maher, S.J.
<b>Pewaukee</b>	<b>Queen of Apostles</b>	<b>Fr. Matthew Widder</b>
Plymouth	St. John the Baptist	Fr. Curt Frederick
Racine	St. Lucy	Fr. Mark Payne
West Bend	St. Frances Cabrini	Fr. Phillip Bogacki

Lenten Missions in ASL and English		
Milwaukee	St. Matthias	Fr. Christopher Klusman (with an interpreter for English)

Lenten Missions in Spanish		
Kenosha	St. Mark	Fr. Max Tzul
Milwaukee	Cathedral of St. John the Evangelist	Bishop James Schuerman (live-streamed)
Sheboygan	St. Dominic	Fr. Enrique Hernandez



### THE CORNERSTONE PROJECT *Answering Christ's Call*

#### IMPORTANT MESSAGE FROM FR. KEN!

It is with great pleasure to tell you that the Archbishop has signed our proxy to build a new church! I want to thank the Building and Planning Committees for their selfless commitment of time, and countless 6 am meetings over the past six years. To all the donors of the Cornerstone Project, I am humbled by your generous financial support to make this project a reality. There is much to accomplish in this next phase, but I know that these are things we can work on together, with your continued support and God's blessings. I will keep you informed as we plan for a spring groundbreaking.



### 40 DAYS FOR LIFE

**February 17th to March 28th**

40 Day prayer partners are there to support the mothers of unborn babies with prayer, comforting words and practical information. Many are directed to the Women's Care Center of Milwaukee for free counseling about life-saving alternatives.

Please join the St. Charles Respect for Life Ministry every Tuesday. We meet at 11:30 am in the St. Charles parking lot and carpool to Affiliated Medical Services, 1428 N Farwell Ave., Milwaukee. We peacefully pray outside the abortion clinic from noon until 2:00 pm.

Please note that if you are unable to join us in prayer during these times, please pray and fast for the unborn and their parents.

To learn more about 40 Days for Life, visit the Milwaukee website at [40daysforlife.com/local-campaigns/Milwaukee](http://40daysforlife.com/local-campaigns/Milwaukee).

# THE GIFT OF GIVING



Who doesn't L♥VE  
St. Charles SPIRIT WEAR?  
Sale runs  
Feb. 12 - Feb. 22

Please visit the parish website to place your order.

This is a fundraiser, and **Mid-City Sports** will generously donate a portion of each sale back to St. Charles Parish and School. Thank you Mid-City Sports!

The sale will be held until midnight on Monday, Feb. 22nd! Orders cannot be accepted after that time. Delivery is expected in late March. School families and parishioners will be contacted by Mid-City Sports regarding pick up. If you have any questions regarding the sale, please contact Renee Krier at rkrier@stcharleshartland.org.

The next sale won't be until Fall 2021.



## ANNUAL DEVELOPMENT FUND

*Help continue the blessed tradition of Catholic education!*

Are you wondering what the ADF is? It helps bridge the gap between the actual cost to educate a child at St. Charles School and the current tuition. Annually, about 10% of our families receive assistance with tuition. This number may increase in the future as families face financial hardships. We want to ensure that all students are able to attend St. Charles no matter their family's financial situation.

We are hoping to reach our goal of \$50,000 by the end of June. We have currently raised nearly \$40,000 and are so appreciative of your generosity!

If you would like to donate to the ADF, please visit our parish or school website for more details. Thank you for continuing to support the mission of St. Charles Parish School!

## ST. VINCENT de PAUL SOCIETY



Roses? Only last a week.

Chocolate? Only lasts a day.

Expensive Dinner? Only lasts an hour.

Help a needy family? Kindness lasts a lifetime.

On this St. Valentine's Day, would you be willing to share the love of Christ with your neighbor in need? Consider a donation to the Society of St. Vincent de Paul as a way to honor St. Valentine.

**FOOD PANTRY NEEDS:** ketchup, brownie mix, small canned hams, Saltine crackers, flavored potatoes (not plain mashed), liquid dish soap

If you need assistance, please contact SVdP at 262-367-0800. If you need food, the pantry is located at 229 Lawn Street, Hartland. It is open Tuesday mornings between 10 AM and noon and evenings on the second and fourth Tuesday of the month between 5:30 PM and 7 PM. Masks are required.

\*\*The food pantry will close when Arrowhead Schools close for inclement weather or when the food pantry manager deems conditions are unsafe.



## ST. CHARLES DINING OUT!

**Endter's Sports Grill in Hartland  
Sunday, Feb. 21st - 4 pm to 10 pm**

Mention St. Charles and Endter's will donate \$5 for each large pizza or \$3 for each small pizza to St. Charles School. Offer good for dine in or carry out. For carry out call 262-369-0079.

Remember to buy SCRIP for Endter's in the Parish Office and then spend it on February 21st.



PARISH SUPPORT  
FOR THE WEEKEND OF  
JANUARY 3RD  
FISCAL YEAR BEGAN JULY 1ST

### 2020-2021

Envelopes.....	\$30,066.00
Offertory.....	\$1,229.92
Weekend Total.....	\$31,295.92
E-Giving.....	\$25,473.75
YTD.....	\$1,225,030.49

### 2019-2020

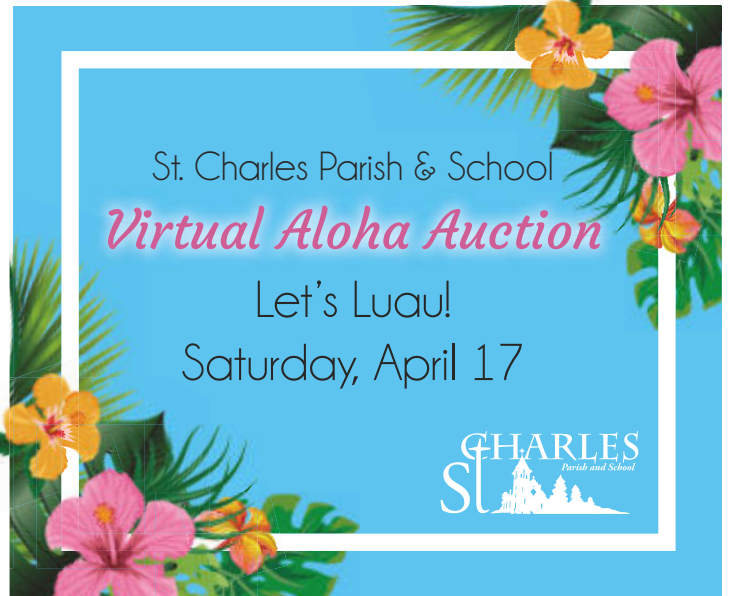
Envelopes.....	\$46,077.65
Offertory.....	\$2,807.89
Weekend Total.....	\$48,885.54
E-Giving.....	\$9,289.37
YTD.....	\$1,135,109.75



EVENTS & NEWS AT  
ST. CHARLES PARISH SCHOOL

CATHOLIC SCHOOLS WEEK RECAP!

Thank you to everyone who helped us celebrate Catholic Schools Week from February 1-5! Students and staff had a wonderful time dressing in different themes and participating in different activities such as Zoom Bingo, a movie afternoon, a Spelling Bee, and snow games. We are so grateful for the opportunity to continue offering faith-filled education to children in our community!



ALL PARISHIONERS ARE WELCOME!

Registration is now open for the Virtual Aloha Auction on Saturday, April 17! It's free to register, and anyone can participate! Please visit our website for more information and to register by March 31.

New this year — become a Champion for St. Charles! Form a team of up to ten people and compete against other Champions to raise the most money for a fun prize. This is a fun way to get together in person or virtually to support our parish and school!

Lu'WOW Party Boxes are available to purchase for a taste of Hawaii! Boxes are available for 4 or 10 people. Supplies are limited, so if you're interested in some sweet treats and goodies, be sure to purchase a box soon!

Thank you for your continued support!



ATTENTION, ALUMNI OF ST. CHARLES!

We would love to celebrate everyone who has been a part of our history! We will be showcasing your achievements in upcoming communications (our bulletin, social media, website, and parishioner emails) and would like to know of any new updates in your life: marriage, new baby, college acceptances, new career or business, etc. If you are interested in sharing your news with us, please email our School Office at [school@scharleshartland.org](mailto:school@scharleshartland.org). We can't wait to hear your good news!



# KNIGHTS OF COLUMBUS®

Knights of Columbus 3562 Kettle Moraine Council

## CHARITY MEAT RAFFLE

Saturday, February 20th

12 Noon until 4:00 pm

Gina's Sports Dock

W278 N2345 Prospect Ave. on Pewaukee Lake

### Four (4) Major Raffles Per Hour

Top Quality Steaks & Seafood from

Albrecht's Sentry in Delafield

Porterhouse, Ribeye, or T-Bone Steaks;

Pork Ribs; Surf & Turf

Complete Take Home Heat-&-Eat Brisket Meals

### Three (3) or Four(4) Paddle Raffles/Hour

With Food and Drink Prizes

### 50/50 Cash Raffle along with

Basket Raffles worth over \$100 each

All profits to benefit the K of C Charity Fund

assisting persons with a variety of needs



## REDEMPTORIST RETREAT CENTER

REST · REFLECT · RENEW

### WEEKEND SILENT PREACHED RETREATS FOR WOMEN

“Living in a Time of Plentiful Redemption”

Redemptorist Retreat Center

1800 N Timber Trail Lane, Oconomowoc

March 19-21, 2021 or March 26-28, 2021

Although many parishes have scheduled to attend retreats on specific weekends as a group, individuals or groups from any parish are free to choose to attend a retreat on any of the indicated weekends.

The silent weekend preached retreat offers time for private prayer and rest, group meditation, Spiritual Conferences, daily Eucharist, an opportunity for the Sacrament of Reconciliation, spiritual consultation, Adoration of the Most Blessed Sacrament, Devotion to Our Mother of Perpetual Help, Lectio Divina, and enjoying the beautiful grounds.

To register by phone, call 262-567-6900, by email [rrc@redemptoristretreat.org](mailto:rrc@redemptoristretreat.org) or online at <https://www.redemptoristretreat.org/shop>.

Arrival/Check-in begins at 6:15 pm on Friday, followed by welcoming/orientation at 7:30 pm (Note: No evening meal is served on Friday). The retreat concludes after the noon meal on Sunday.

### FUTURE RETREATS AT THE REDEMPTORIST RETREAT CENTER

#### Ash Wednesday Day of Prayer - February 17, 2021

Pre-registration is required

To register by phone 262-567-6900

To register by email: [rrc@redemptoristretreat.org](mailto:rrc@redemptoristretreat.org)

#### Weekend Silent Preached Retreats for Men

“Living in a Time of Plentiful Redemption”

February, March and April weekends available

To register visit <https://www.redemptoristretreat.org/shop>

#### Holy Week Silent Preached Retreat

March 29 - April 3, 2021

Theme: "Walking With Jesus to Jerusalem and Redemption"

Presenter: Fr Richard Thibodeau, C.Ss.R

To register visit <https://www.redemptoristretreat.org/shop>

#### Annual Preached Retreats for Women Religious and Women

5-Day Retreat or 7-Day Retreat

in June and July 2021

Theme: "The Journey of Faith from Transition to Transformation"

To register visit <https://www.redemptoristretreat.org/shop>

FIAT  
WY2021



## WISCONSIN CATHOLIC YOUTH RALLY 2021: FIAT

In-Person Experience (\$15/person- space is limited) OR Interactive Virtual Experience (\$10/person)

Friday, March 12th, 9am-12pm  
Catholic School Edition: 6th-8th grade

Saturday, March 13th, 9am-12pm  
High School and Middle School Edition:  
6th-12th grade

Registration is open now through March 9th

For more details or to register, visit [www.arisemke.org/wcyr](http://www.arisemke.org/wcyr).

If you have questions, please contact Brian Magliocco at [brian@arisemke.org](mailto:brian@arisemke.org) or by calling 262-409-4774.

Say "yes" to God in a new way and meet Christ at this year's Wisconsin Catholic Youth Rally!

**Steve & Joyce BERGELIN**  
www.SteveandJoyceBergelin.com

**REALTY EXECUTIVES**  
INTEGRITY  
(262) 424-8753

**TODD WANGERIN ELECTRIC, Inc.**  
Free Estimates - Licensed - Insured  
Over 20 years experience  
Todd Wangerin 262-719-4411  
twelectric4411@att.net

**BIEBEL'S True Value.**  
Hardware & Rental  
HARTLAND  
580 Hartbrook Dr. • 369-1070

**Oconomowoc Landscape Supply & Garden Center**  
Landscape Supplies • Annuals  
Perennials • Trees & Shrubs  
Increase your Home's Value Enjoy a Beautiful Landscaped Yard  
262-567-1777  
www.olandscape.com • Corner of K & 67 at bypass

**We Help You Travel Better!**  
262.567.6658  
TLJournneys.com  
TRAVEL LEADERS

Complete line of Hispanic & American Groceries.  
We specialize in fresh corn tortillas, Mexican bakery and our famous El Rey Tostadita Chips.  
**Serving Milwaukee Since 1978**  
El Rey Family Market 3520 W. Oklahoma Ave. 414-943-1940  
El Rey Plaza 3524 W. Sherman St. 414-943-1816  
El Rey Food Mart 1022 W. Sherman St. 414-388-7786

**Holzhauser, Hewett & Barta s.c.**  
Orthodontic Care For Children And Adults  
Daniel Holzhauser DDS MS | Charles Hewett DDS MS | Joshua Barta DDS MS  
520 Hartbrook Dr., Hartland  
2516 N. Grandview Blvd, Waukesha  
10225 W. Capitol Dr., Wauwatosa  
262-567-7076  
262-547-6365  
414-463-5700

**BUNZEL'S OLD FASHIONED MEAT MARKET**  
Fresh Custom Cut Choice Meats  
Party Trays • Catering  
Thank You For Supporting A Family Tradition  
9015 W. BURLEIGH 873-7960  
www.bunzelmeats.com

**Lake Country Financial Group LLC**  
Steven R. Seibel, CLU, ChFC, LUTCF  
Financial Advisor  
(262) 646-4115  
Securities offered only through Citigroup Investments, Inc., a registered broker-dealer and member FINRA/SIPC. Lake Country Financial Group LLC and Citigroup are separate and unaffiliated entities. Advisory services offered through Citigroup Advisors, Inc., a registered investment advisor.

**FOOT & ANKLE Associates of Wisconsin**  
Parish Member  
Dr. Amy Galati  
Call: (262) 542-3779  
www.footandanklewi.com

**KOWAL INVESTMENT GROUP**  
The Retirement Specialists  
Aaron T. Kowal, CFP®  
W238N1660 Busse Rd., Ste. 100, Waukesha, WI 53188  
262-522-4040  
www.kowalinvestmentgroup.com  
Securities offered through Raymond James Financial Services Inc. Member FINRA and SIPC. Investment Advisory Services offered through Raymond James Financial Services Advisors, Inc. and Kowal Investment Group, LLC. Kowal Investment Group, LLC is not a registered broker-dealer and is independent of Raymond James Financial Services.

**Hartland Family CHIROPRACTIC**  
211 Cottonwood Ave, Hartland  
(262) 367-7424  
www.hartlandchiro.com  
Dr. Hans Halaska

Call us to schedule your free, no obligation, financial check-up today.

**Pat's Heating & Air Conditioning**  
30 YEARS OF EXCELLENCE  
262-567-7499  
OCOMOWOC  
www.patsheating.com

**PROTECTING SENIORS NATIONWIDE MEDICAL ALERT SYSTEM**  
\$29.95/MO  
BILLED QUARTERLY  
CALL NOW! 1.877.801.7772 - WWW.24-7MEDALARM.COM

**Hartland Family CHIROPRACTIC**  
211 Cottonwood Ave, Hartland  
(262) 367-7424  
www.hartlandchiro.com  
Dr. Hans Halaska

**TOWN BANK**  
AWINTRUST COMMUNITY BANK  
800-433-3076  
www.townbank.us

**WE'RE HIRING AD SALES EXECUTIVES**  
• Full Time Position with Benefits  
• Sales Experience Preferred  
• Paid Training  
• Overnight Travel Required  
• Expense Reimbursement  
CONTACT US AT careers@4LPI.com  
www.4LPI.com/careers

**NEVER MISS A BULLETIN!**  
Sign up to have our weekly parish bulletin emailed to you at [www.parishesonline.com](http://www.parishesonline.com)

**TOWN BANK**  
AWINTRUST COMMUNITY BANK  
800-433-3076  
www.townbank.us

**BUDGET BLINDS of LAKE COUNTRY**  
262-309-6710

**R&R INSURANCE**  
Rick Kalscheuer  
Parish Member  
800.566.7007 | MyKnowledgeBroker.com

**Seven Seas on Nagawicka Lake**  
Casual & Fine Dining  
Sunday Brunch  
sevensseaswi.com 262-367-3903

**MICHAEL J. FINN S.C.**  
ATTORNEY AT LAW  
PARISH MEMBER  
262-367-8485  
mjfinnsc@sbcglobal.net  
163 E. Capitol Dr., Hartland, WI 53029

**VISU-SEWER, INC.**  
262-695-2340  
Professional Sewer Inspection, Maintenance and Rehabilitation Services  
Parish Members  
www.visu-sewer.com

**DON CULL EXCAVATING**  
W298 N9248 Center Oak Rd  
Septic & Mound Systems Grading  
966-7038  
MPRS 221589

**LAKE COUNTRY REAL ESTATE**  
Scott Heyerdahl  
262-719-6970  
Sheyerdahl@firstwebcor.com

**SPREAD THE WORD**  
A Thriving, Vibrant Community Matters  
SUPPORT OUR ADVERTISERS

**CHARLES St. Charles School**  
St. Charles School... We choose Christ in learning, living, & values in the light of our faith.  
262-367-2040  
www.stcharlesschoolhartland.com

**JENSON MOTORS Auto - Truck Repair**  
Hours: Mon-Fri 7:30-5:30  
Proprietor: Guy Jenson  
262-367-5556  
364 Cottonwood Ave., Hartland, WI

**Hartland Terrace Assisted Living**  
• RN Lead 24-Hour Elite Care Team  
• Full Continuum of Care • Memory Care  
• All Inclusive Pricing • Private Studios  
• Family Centered Care Model  
327 North Avenue • Hartland | 262-369-4391  
www.hartlandterrace.com

**PATRIOT PLUMBING, INC.**  
COMMERCIAL AND RESIDENTIAL  
www.patriotplumbingwi.com  
Earl Cull • 262-966-2284  
MP221857 107112RT 107113RMT

**Culver's**  
701 Industrial Ct., Hartland  
262-367-5800

**North Lake Family Dentistry**  
Patty Erickson, D.D.S.  
W315N7641 Hwy 83, North Lake, WI  
Phone: 262.966.7668  
www.nrlakefamilydentistry.com  
northlakefamilydentistry@gmail.com

**KLINK'S KARPETS, INC**  
Hartland's Floor Covering Center  
Family Owned & Operated for over 47 Years  
Carpeting & Hard Surfaces  
107 North Ave. Hartland, WI  
367-4670 Parish Member

**FOX BROS.**  
206 Cottonwood  
262-367-2922  
1700 DOWEN ST.  
262-567-8376  
Open 7 days a week  
6am-9pm

**ECHO LAWN'S**  
Henry & Diane Barwinski, Co-Owners  
A Complete Lawn, Landscape, and Snow Removal Service  
Milwaukee Lake Country  
414-462-6670 262-695-8152

**AVAILABLE FOR A LIMITED TIME**  
ADVERTISE YOUR BUSINESS HERE  
Contact Jeff Tkachuk to place an ad today!  
jtkachuk@4LPI.com or (800) 950-9952 x2513

**DAVE PERRY**  
heating cooling  
Proudly Serving the Lake Country Area for more than 20 years  
Heating • Air Conditioning • Geothermal New Construction • Replacement  
262.966.1959  
www.daveperryheatingandcooling.com

**Too Sick for Mass?**  
SUPPORT OUR PARISH NO MATTER WHERE YOU ARE!  
Sign-up to get your bulletin delivered right to your inbox!  
www.parishesonline.com

**SPRUNG ARMSTRONG AIR**  
Heating, Sheet Metal & Well Pump Service  
7024 Main St., Merton  
538-1400  
Service • Repair & New Construction  
Residential & Commercial  
Parish Members

**Lake Country Eye Care**  
520 Hartbrook Dr., Hartland, WI 53089  
Amber A. Dentz, OD - Parishioner  
www.lakecountryeyecare.com  
262-367-6610

**Generations DENTAL**  
Jim Muensterberger, D.D.S.  
and Kelly Newman, D.D.S.  
Parish Members  
100 E. Capitol Dr.  
Hartland, WI 53029  
Office: 262-369-2929  
General Dentistry • Endodontics

**Palmer's STEAKHOUSE**  
 www.Palmersteakhouse.com  
 122 E. Capitol Dr. • Hartland, WI  
 262-369-3939

**Bob Hamilton**  
 207 E. CAPITOL DRIVE • HARTLAND, WI 53029  
 262.367.2312  
 BHAMILTO@amfam.com

**EH**  
**Emanuele & Haut, CPAs, SC**  
 Certified Public Accountants  
 Parish Member  
 262.367.1040  
 sam@ehcpas.com

**SUPPORT YOUR LOCAL PARISH.**  
 Buy a bulletin ad space today!

**REICHL & KOLSTAD ORTHODONTICS**  
 Dr. Peter Reichl & Dr. James Kolstad  
 look forward to meeting you!  
 Offering Traditional Braces & Invisalign  
 Located in Waukesha, Mukwonago & Hartland  
**262-547-2827**  
 www.ReichlKolstadOrtho.com

**UnitedDrivingSchoolWI.com**  
**ENROLL TODAY!**

**Wolf Electric LLC**  
 Commercial, Industrial, Residential  
**Garrett Wolf** • Master Electrician/Parishioner  
 Commercial • Industrial • Residential  
 (262) 224-7310 • www.wolfelectricllc.com

**ADT-Monitored Home Security**  
 Get 24-Hour Protection From a Name You Can Trust

- Burglary
- Fire Safety
- Flood Detection
- Carbon Monoxide

1-855-225-4251

**WEALTHSPIRE ADVISORS**  
**Brion Collins**  
 CFP® Professional & Parishioner  
 262.326.6090 | www.wealthspire.com

*We salute the St. Charles community and all who make such a profound difference.*



Wealthspire Advisors is the common brand and trade name used by Sunray Advisory LLC and Wealthspire Advisors, LP, separate registered investment advisors and subsidiary companies of NFP Corp. Securities, when offered, are offered through an affiliate, Wealthspire Capital LLC, member FINRA/SIPC. Certified Financial Planner Board of Standards Inc. (CFP Board) owns the CFP® mark in the United States.

**What Will Be Your Legacy?**  
 If you value your faith and your family, I welcome the opportunity to share my faith-based perspective in union with my financial experience in order to co-create a personal legacy strategy. I can assist with: Portfolio Management | Retirement Planning | Financial & Legacy Strategies | Special Needs Planning

**Kurt Maltby, CFP®, CHsNC®**  
 CERTIFIED FINANCIAL PLANNER™  
 Associate Vice President, Financial Advisor  
**Morgan Stanley**  
 20975 Swenson Drive, Waukesha  
 Phone: (262) 523-8303 | NMLS # 1504808  
 advisor.morganstanley.com/the-riverwood-wealth-management-group



Morgan Stanley and its Financial Advisors do not provide tax or legal advice. Individuals should seek advice based on their particular circumstances from an independent tax advisor.  
 Morgan Stanley Smith Barney LLC. Member SIPC.

**EVERETT LUKO FUNERAL HOME**  
 262-167-2156

**PASSAGES**  
 Cremation Service  
 262-167-2156

**CARPET PLUS, INC.**  
 We Bring the Showroom to You!  
 (414) 573-0105  
 Dan Taylor, Parish Member

**Pella** Upgrade your home with beautiful styles

Replace now and give your home a fresh point of view

Pella Windows & Doors of Wisconsin has all the styles, finishes, and hardware to give your home a new look with upgraded energy efficiency. Whether you're interested in wood, fiberglass, or vinyl, Pella has the windows and doors to enhance your home, inside and out.

**Visit PellaWI.com for our latest offers.**

Mention this ad when you schedule your free, no-obligation consultation and at your appointment, receive a **free \$50 gift card\*** good for dining, beverages, or theatre admission for the luxury Silverspot Cinemas at the Corners of Brookfield!

\*Limit one per household, while quantities last.



**Pella Windows & Doors Of Wisconsin**  
 © 2020 Pella Corporation

**Gina Della**  
 General Manager

**Visit the Pella Windows & Doors of Wisconsin showroom nearest you:**  
 Brookfield - Green Bay - Madison - Appleton | PellaWI.com | 877.687.0657

**H+p** CERTIFIED PUBLIC ACCOUNTANTS  
 Mark G. Hayes, CPA  
 262-367-5505 • 262-367-0545 Fax  
 365 Cottonwood Ave., Suite A • Hartland, WI 53029  
 mark@hpcpa.tax • www.hpcpa.tax

**payrollDATA**  
 1020 James Drive, Ste O  
 Hartland, WI 53029  
 262-563-5150  
 www.payrolldata.com

**PAUN Construction**  
 Specializing in Masonry Residential & Commercial  
 W300 N7741 Christine Ln., Hartland, WI 53029  
 Robert J. Paun (262) 326-8043  
 www.paunconstruction.com  
 mail@paunconstruction.com

**DUNN**  
 INVESTMENT MANAGEMENT GROUP  
 of RBC Wealth Management  
**James P. Dunn**  
 Managing Director - Financial Advisor  
 Senior Portfolio Manager - Portfolio Focus

18500 West Corporate Drive, Ste. 100  
 Brookfield, WI 53045  
 Call (262) 395-1101 for an appointment  
 james.dunn@rbc.com

- Customized portfolio management & investment consulting for individuals & institutions
- Comprehensive investment advice & retirement planning
- Recently retired or changed jobs? Providing specialized 401K rollover solutions

A Division of RBC Capital Markets LLC NYSE/FINRA/SIPC

**SPORTS GRILL**  
 PIZZA • FRIDAY FISH FRY • SANDWICHES  
 \*\$5.00 OFF ANY 16" PIZZA  
 \*SUNDAY'S "KIDS EAT FREE" WITH ADULT PURCHASE  
 We do Parties & Catering!  
 Not valid with any other offers or coupons  
**369-0079**  
 300 COTTONWOOD • HARTLAND  
 PARISH MEMBER

**GOOD TIMES DAY CAMP**  
 262-521-8100 - WWW.GOODTIMESWI.COM

Where happiness and wonderment come to play!

- Now Enrolling Ages 3 - 15
- 15 Acres & 2 Heated Pools
- Many Athletic Fields
- Swimming Lessons Included
- Field Trips Included
- Bussing to/from Hartland
- Bussing to/from Brookfield
- Worry Free Scheduling
- Low Ratio's
- Accepting Counselor Applications

Where challenges are met, goals are accomplished, and friendships and memories made last a lifetime!

**SPREAD THE WORD**  
 A Thriving, Vibrant Community Matters

**SUPPORT OUR ADVERTISERS**

Please Support these **CONTRACTORS**

Thank You to these contractors helping St Charles grow!

**GOOD TIMES DAY CAMP**  
 262-521-8100 - WWW.GOODTIMESWI.COM

Where happiness and wonderment come to play!

- Now Enrolling Ages 3 - 15
- 15 Acres & 2 Heated Pools
- Many Athletic Fields
- Swimming Lessons Included
- Field Trips Included
- Bussing to/from Hartland
- Bussing to/from Brookfield
- Worry Free Scheduling
- Low Ratio's
- Accepting Counselor Applications

Where challenges are met, goals are accomplished, and friendships and memories made last a lifetime!

**Vicki Marciniak**  
 When it comes to your home, it's more than just business, it's personal.  
 Cell: (414) 243-5584  
 vmarciniak@firstweber.com  
 www.VickiMarciniak.FirstWeber.com

**NELCO ELECTRIC, INC.**  
 GERMANTOWN, WI  
 Commercial • Industrial • Residential  
 24 Hour Service 262-502-9950  
 WWW.NELCOELECTRIC.COM  
 Barb Jarchow Parishioner

**zimmerman**  
 ARCHITECTURAL STUDIOS, INC.  
 200 West 9th Street, Appleton  
 Appleton, WI 54912 | www.zimmerman.com  
 (920) 838-9500  
 (920) 838-9500

**FRONTIER**  
 TITLE & CLOSING SERVICES, LLC  
 1130 James Drive, Hartland, WI 53029  
 Office: 262-361-4466 Fax: 262-361-4462  
 www.frontiertitlellc.com  
 Frontier Title & Closing Services, LLC  
 Lake Country's Most Experienced Title & Closing Company  
 Specializing in Residential, Commercial & New Construction Transactions  
 Serving the Real Estate Community!

**BUILDERS**  
**Hunginger**  
 SINCE 1907  
 Kevin O'Toole, Parish Member  
 Construction Manager General Contractors  
 Brookfield, WI 262-797-0797

**zimmerman**  
 ARCHITECTURAL STUDIOS, INC.  
 200 West 9th Street, Appleton  
 Appleton, WI 54912 | www.zimmerman.com  
 (920) 838-9500  
 (920) 838-9500

**Lifetime Door Co**  
 GARAGE DOORS • DOOR OPENERS • REPAIRED OR REPLACED  
 SALES • SERVICE • INSTALLATION  
**262-567-9203**