



*At St. Charles, all are invited to
meet Christ, know Christ,
love Christ and serve Christ.*

**January 31, 2021
FOURTH SUNDAY OF ORDINARY TIME**



*The people were astonished at his teaching, for he taught
them as one having authority and not as the scribes.*

Mark 1:22



313 Circle Drive, Hartland, WI 53029 • 262-367-0800
www.stcharleshartland.com • email: parish@stcharleshartland.com



WELCOME TO ST. CHARLES - WE ARE HERE FOR YOU



PASTOR
Fr. Ken Omernick



ASSOCIATE PASTOR
Fr. Nick Baumgardner



PERMANENT DEACON
Rob Mitchell

ST. CHARLES STAFF TEAMS

TRANSITIONAL DEACON: Tim Schumaker
tschumaker@stcharleshartland.org

TEACHING PARISH SEMINARIANS:
Robert Ross, rross@sfs.edu
David Sweeney, dsweeney@sfs.edu

SCHOOL TEAM 262-367-2040

Principal/Team Lead: Dan Garvey, Ext. 208,
dgarvey@stcharleshartland.org
Advancement Officer: Allison Caswell, Ext. 227,
acaswell@stcharleshartland.org
School Administrative: Lisa Moehrke, Ext. 206,
school@stcharleshartland.com
School Administrative: Karen Dejewski, Ext. 206,
school@stcharleshartland.com

COMMUNICATION & STEWARDSHIP TEAM

Assist. to the Pastor/Team Lead: Terrie Carew, Ext. 224,
tcarew@stcharleshartland.org
Communications Coordinator: Allison Caswell, Ext. 215,
acaswell@stcharleshartland.org
Graphic Design Specialist: Renee Krier, Ext. 224,
rkrier@stcharleshartland.org
Welcome Receptionist: Debra Hertel, Ext. 226,
dhertel@stcharleshartland.org
Parishioner Engagement: Nancy Neuser,
nneuser@stcharleshartland.org

DISCIPLESHIP TEAM

Associate Pastor/Team Lead: Fr. Nick Baumgardner,
nbaumgardner@stcharleshartland.org
Adult Discipleship/Safeguarding: Jess Panlener, Ext. 214,
jpanlener@stcharleshartland.org
Adult Small Groups: Maria Notch, Ext. 220,
mnotch@stcharleshartland.org
Children's Discipleship: Alicia Van Hecke, Ext. 205,
avanhecke@stcharleshartland.org
Student Discipleship Lead: Nick Scanlan, Ext. 209,
nscanlan@stcharleshartland.org
Student Discipleship Co-lead: Rachel Heffron, Ext. 221,
rheffron@stcharleshartland.org
Discipleship/Administrative: Trish Gilchrist, Ext. 230,
tgilchrist@stcharleshartland.org
Discipleship/Administrative: Laura Zgrabik, Ext. 212,
lifeteen@stcharleshartland.org

OPERATIONS TEAM

Operations Manager/Team Lead: Marge Beck, Ext. 201,
mbeck@stcharleshartland.org
Facilities Manager: Mike Cattani, Ext. 210,
mcattani@stcharleshartland.org
Maintenance Manager: Tim Orzechowski, Ext. 217,
torzechowski@stcharleshartland.org
Bookkeeping Specialist: Dee Anne Hamer, Ext. 200,
dhamer@stcharleshartland.org
Operations Administrative: Joann Papa, Ext. 226,
jpapa@stcharleshartland.org
Operations Administrative: Kathy Gillstrom, Ext. 200,
kgillstrom@stcharleshartland.org
Cornerstone/Safeguarding: Karen Dejewski,
cornerstoneproject@stcharleshartland.org

WORSHIP TEAM

Worship Lead: Peg Kasun, Ext. 225,
pkasun@stcharleshartland.org
Permanent Deacon: Deacon Rob Mitchell,
rmitchell@stcharleshartland.org
Liturgist, M.Div.: Elizabeth Thompson, 262-367-6704
ethompson@stcharleshartland.org
Musician: Scott Currier, Ext. 225,
scurrier@stcharleshartland.org
Worship Assistant: Kathleen Latzke-Daley,
kldaley@stcharleshartland.org
Wedding Coordinator: Dee Anne Hamer, Ext. 222,
dhamer@stcharleshartland.org



THE GREATEST
GOOD
IS WHAT WE DO
FOR ONE ANOTHER.
MOTHER TERESA

WELCOME TO ST. CHARLES - WE ARE HERE FOR YOU

PARISH OFFICE: **262-367-0800**, Mon. - Fri., 8 am - 4 pm
EMAIL US: parish@stcharleshartland.org
WEBSITE & LIVESTREAM: www.stcharleshartland.com
FOYER HOURS FOR DONATIONS: Mon. - Fri., 7 am - 3:30 pm
PARISH SCHOOL: 262-367-2040, school@stcharleshartland.com

SACRAMENT OF THE SICK

By appointment with Fr. Ken or Fr. Nick (schedule by calling the Parish Office).

RECONCILIATION

Saturday: 3:30pm - 4:30pm & Thursdays: 5:00pm - 6:00pm or by appointment (schedule by calling the Parish Office).

TUESDAY TRADITIONAL MASS

The following Tuesdays at 5:30 pm: Feb. 23, March 23, April 27 & May 25.

JOIN OUR PARISH

Contact the Parish Office during office hours at 262-367-0800 or parish@stcharleshartland.org.

PLANNING TO BE MARRIED?

Congratulations! Please notify St. Charles at least six months in advance. Weddings may be celebrated on Friday evenings and Saturdays at 11:00am and 2:00pm. Exceptions are made only with the permission of the Pastor. Please contact Dee Anne Hamer at 262-367-0800 Ext. 222.

ARE YOU EXPECTING OR ADOPTING A CHILD?

St. Charles is honored to serve parents seeking Baptism for their child(ren). To find out more information about our preparation process and to schedule infant/child Baptisms, please contact Jess Panlener at 262-367-0800 Ext. 214.

BECOMING FULLY CATHOLIC

Are you unbaptized or baptized in a different Christian faith and considering becoming Catholic? Are you a baptized Catholic who did not receive the Sacraments of Reconciliation, Eucharist and/or Confirmation? St. Charles provides an adult formation process that will help you discover Jesus and His Holy Catholic Church. Please contact Jess Panlener at 262-367-0800 Ext. 214.

SMALL GROUPS

The Small Group movement at St. Charles offers you a way to authentically seek Jesus in small faith sharing communities. Small Groups gather in members' homes throughout Lake Country during Fall and Lent. For more information, please contact Maria Notch at 262-367-0800 Ext. 220.

OUTREACH SERVICES TEAM: Terri Blazek: 262-367-7608, jtblazek@wi.rr.com

TO ASK FOR PRAYERS or to be added to the email list, please email: prayernetwork@stcharleshartland.org

FOR EMERGENCY PRAYERS, please email: emergencyprayers@stcharleshartland.org

ST. VINCENT DE PAUL: if you need food, shelter or assistance call 262-367-0800 (Parish Office)

NEED HOME COMMUNION (temporarily suspended):
For information call 262-367-0800 (Parish Office)

Mass Intentions for the Week of January 31st



Sunday, January 31

7:00 am Living and Deceased Members of St. Charles
9:00 am † Joseph Cull
11:00 am † Patricia E. Dunn
6:00 pm † Matthias Peter Panlener

Monday, February 1

8:30 am † Greg Blattner

Tuesday, February 2

8:30 am † Deceased Members of the Crisci Family

Wednesday, February 3

8:30 am † Mary Daly

Thursday, February 4

8:30 am † Edward Cibula

Friday, February 5

8:30 am † Lance Kerwin

Saturday, February 6

8:30 am † Josh Zablocki
5:00 pm † Kathy Howe

Sunday, February 7

7:00 am † Robert Rydzewski
9:00 am Living and Deceased Members of St. Charles
11:00 am † John Connolly
6:00 pm NO MASS



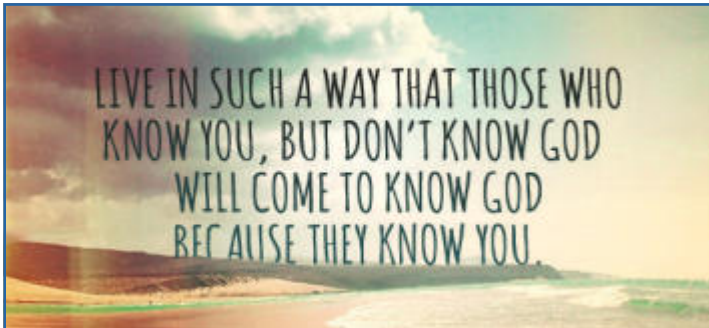
Bulletin Advertisers of the Week

Please support our advertisers!

Lifetime Door Co

GARAGE DOORS • DOOR OPENERS • REPAIRED OR REPLACED
SALES • SERVICE • INSTALLATION

262-567-9203



THIS WEEKEND'S
GOSPEL MEDITATION
4TH SUNDAY IN ORDINARY TIME

Most of us are quiet people who desire to live a good and holy life, promote the values and mission of the Gospel as best we can and desire to one day inherit the surprise of life eternal God promises to us. We are not trail blazers. We are simple people who want to do the simple things of life well. But there are others who left a more profound impact along the way of the paths they walked. Folks like Dorothy Day, Martin Luther King, Thomas Merton, Gandhi, St. Teresa of Calcutta, and many others left lasting impacts and legacies. Like Moses, they show us by word and deed who God is and what integrity and a purpose driven life look like. They show us how to be holy. We need Moses people like these to give us inspiration, hope and an example of holy living.

We do not need to do what they did or even mirror their relationship with God. Each one of us is God's special creation, with a purpose and soul known only to us. We need to learn how to open up and bring, without compromise, our soul-ness to life. We know when someone is authentic and centered because they always point to truth, even though they struggle and sin themselves, and they embody an unspoken timeless wisdom that just sounds and feels right. Jesus taught with this same type of authority and it astonished many who listened. We do not need to move mountains, advance a cause, write books or become notable. All we have to do is become credible witnesses of the faith we profess. Moses people can teach us how to do this.

St. Oscar Romero was an amazing man and a Moses figure for sure. He saw God in the burning bush and brought the flame of Gospel faith to the poorest of the poor, challenging the evils of the society in which he lived. He was tireless and persistent. He must have gotten very close to the problem because it cost him his life. He suspected it would. St. Romero said, "When we leave Mass, we ought to go out the way Moses descended Mt Sinai: with his face shining, with his heart brave and strong to face the world's difficulties." We can learn from this wisdom. If we allow the power of the Mass to truly transform us, we will leave that holy encounter changed. Our face will shine, and we will have courage. We can then bring what we have received to life's challenges. That sounds doable, doesn't it? Because of the example of our simple holiness, people will be amazed.

©LPi



15 minutes each day spent in God's presence – reading, reflecting, responding and resting with his Word – adds up to 90 hours in one year. That is time well spent and a testimony to how a little at a time turns into something remarkable!

Reflection questions for Sunday, February 7th



- We hear how Job struggled to find meaning and hope in his life. How does your faith help you get through difficult times in your life?
- Paul speaks of his singular desire to preach the "gospel" (the Good News of Jesus Christ). When do you share the gospel message with others?
- We learn that from the beginning of his public ministry Jesus was very purpose-driven: healing the sick and preaching the good news. How intentional is the practice of faith in your daily life?

Readings for the Week of January 31st

- Sunday:** Dt 18:15-20/Ps 95:1-2, 6-7, 7-9 [8]/1 Cor 7:32-35/
Mk 1:21-28
- Monday:** Heb 11:32-40/Ps 31:20, 21, 22, 23, 24 [25]/
Mk 5:1-20
- Tuesday:** Mal 3:1-4/Ps 24:7, 8, 9, 10 [8]/Heb 2:14-18/
Lk 2:22-40 or 2:22-32
- Wednesday:** Heb 12:4-7, 11-15/Ps 103:1-2, 13-14, 17-18a [cf. 17]/Mk 6:1-6
- Thursday:** Heb 12:18-19, 21-24/Ps 48:2-3ab, 3cd-4, 9, 10-11 [cf. 10]/Mk 6:7-13
- Friday:** Heb 13:1-8/Ps 27:1, 3, 5, 8b-9abc [1a]/Mk 6:14-29
- Saturday:** Heb 13:15-17, 20-21/Ps 23:1-3a, 3b-4, 5, 6 [1]/
Mk 6:30-34
- Next Sunday:** Jb 7:1-4, 6-7/Ps 147:1-2, 3-4, 5-6 [cf. 3a]/
1 Cor 9:16-19, 22-23/Mk 1:29-39



READ. REFLECT. RESPOND. REST.

Cut out and keep in your Bible for reference!



Respect for Life Ministry - Protecting the Most Innocent Among Us

Have you noticed the pink and blue flags around our building in Fall? Then you've seen one of our Respect for Life Ministry's missions coming alive.

"Many have told us that this powerful display has sparked a meaningful conversation within their families," Ruth Chadwick, Ministry Leader, says. *"What stands out are the number of people who have thanked us for putting on the Pink and Blue Flag Campaign."*

This ministry was created in 2009 after a group of St. Charles Parish School parents had a conversation about a proposed Health Care Reform Bill.

"We officially started the Respect for Life Ministry to soften hearts, change minds, and advance the sanctity of human life from conception to natural death, especially for those Christ called, 'the most innocent among us,'" Chadwick says.

"I wanted to work with Ruth to try to bring awareness to people of the horrors of abortion and to help them make informed decisions in all elections regarding the sanctity of life at all stages," member Christine Sprung says. *"It is important to me because 'if you don't have life, nothing else matters.'"*

This Ministry actively furthers their mission of protecting innocent lives. Every January, they collect signatures from people in our parish and run an ad in the Waukesha Freeman on January

22 on behalf of Wisconsin Right to Life. They usually collect over 300 signatures from St. Charles.

They also participate in 40 Days for Life in Spring and Fall, which includes going to an abortion clinic in Milwaukee to pray. The ministry collects supplies for new mothers and babies at the Women's Care Center, which has saved over 12,000 babies from being aborted. In honor of children who lose their lives to abortion each year, they put out pink and blue flags in October in front of our Church as a reminder of how many unborn babies do not live to see God's plan for them. They even host fundraisers to help aid in their mission.

"On Mother's Day, we have our Rose Sale after each Mass," Chadwick says. *"The money that we raise, plus donations from the Knights of Columbus, is used for funding Respect for Life projects. Our plan is also to raise money in order to purchase a large monument as a memorial to the unborn."*

This ministry has been very impactful for those involved in it.

"I have been touched by new mothers who have thanked us for giving them the courage to keep their babies, citing our prayerful presence in front of the abortion clinic," Chadwick says.

If you are interested in joining the Respect for Life Ministry, please contact Ruth Chadwick at 262-367-8976 or ruth.a.chadwick@gmail.com.



During October flags are put out to represent how many babies are aborted each day.

**ASH WEDNESDAY
NOON MASS ADDED**

Ash Wednesday, February 17, is just a few weeks away. This day is the beginning of the 40-day season of Lent, which is marked by repentance, fasting, reflection and ultimately the celebration of Easter. We normally have three Masses on that day - 6:30 am, 8:30 am and 6:00 pm. Due to the social distancing requirements, the 8:30 am Mass will be reserved for our St. Charles School Students only. For parishioners who normally come to the 8:30 am Ash Wednesday Mass, we are adding another Mass at Noon. Please see future bulletins and our parish website for additional information.

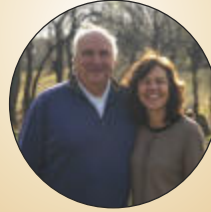


Bring your morning coffee and wake up with **St. Charles Dynamic Men's Group** every Thursday in the Borromeo Room! This men's group ignites great friendships and deepens faith. Doors open at 5:30 am and the program starts at 6:00 am with group discussion ending promptly at 7:00 am. The program presented is Symbolon - The Catholic Faith Explained, which is a systematic presentation of our Catholic Faith. Symbolon brings together some of the most trusted Catholic teachers in the world, explaining the breadth and richness of the Catholic faith. COVID protocols such as social distancing and wearing of masks will be strictly followed. Join us on any Thursday morning.



**DO YOU KNOW SOMEONE
OVER 30 WHO MIGHT HAVE
A VOCATION?**

Some men mistakenly assume priesthood is not an option because they had been married, had children, lacked a college degree, or thought they were "too old" or "not good enough." Sacred Heart Seminary and School of Theology has been forming men over age 30 since 1970 and is hosting Zoom "Meet & Greets" for anyone who might want to learn more. Join one of our informal conversations: <https://www.shsst.edu/vocation/>. Contact Deacon Steve Kramer for more information: skramer@shsst.edu or (414) 858-4767.



"We have been leading a Small Group since the inception back in the fall of 2013. More accurately, we should say that our Small Group has been leading us on our Faith Journey over those seven years. Growing up in the 60's and 70's it is pretty

safe to say that we were poorly catechized. So poorly catechized in fact that we felt completely ill equipped to lead any Catholic group. Through the grace of God and through the connection to our amazing Small Group, we pressed on and soon became a tight-knit, on-fire band of disciples who continue to grow in our love for Christ. Only through scripture can you know Christ. And knowing Christ is the only way you can overcome the challenges we all face in this life."

Paul & Ruth Chadwick



To learn more about small groups, please contact Maria Notch at mnotch@stcharleshartland.org.



**Be a Part of the Virtue
Baseball Club this Summer!**

Join a growing group of families from throughout the Lake Country and greater Milwaukee area who seek to honor Christ by encouraging our sons and families to heroically live out

virtues through the sport of baseball.

This summer, the tradition of promoting excellence, creating a fun environment, and building strong bonds of friendship through the sport of baseball continues in a new Virtue Baseball Club for boys from K4 through high school! Registration is open for T-ball (K4/K5), coach-pitch (1st/2nd grade), or player-pitch (3rd grade through 12th grade). No previous playing experience is required.

To sign up or for more information visit www.VirtueBaseball.org or contact us at connect@VirtueBaseball.org.

Virtue Baseball Club is an apostolate of the Men of Christ movement.



Many Hands. One Vision.



Catholic Stewardship Appeal
Archdiocese of Milwaukee

**MANY HANDS. ONE VISION.
CATHOLIC STEWARDSHIP APPEAL
WINDS DOWN FOR 2020**

There is no better, more convenient way to transform lives than through the Archdiocese of Milwaukee's Catholic Stewardship Appeal. Through ministries and programs, the appeal helps more than 500,000 people in southeastern Wisconsin. The 2020 appeal is winding down at the end of January and St. Charles is \$4,000 shy of its goal. If you haven't already, please consider donating now to help us reach our goal before the 2021 appeal is launched at the beginning of February. Go to <https://www.archmil.org/2020-Catholic-Stewardship-Appeal.htm>.

ST. VINCENT de PAUL SOCIETY



Next week is SHARE SUNDAY! Donations of food and hygiene items for the pantry may be placed in the SVdP barrel located near the office window. SVdP collection boxes for financial help are located in the church narthex and next to the hall sign-up shelf. If your donation is intended for the food pantry, please write that on the collection envelope or on the memo line of your check. The members of SVdP appreciate your sacrificial giving and treat your donations respectfully when determining financial assistance needed. Some ways the funds are used are to help families remain in their homes, repair their vehicles, pay utility bills, obtain mattresses and beds for their children, or provide lunches for low-income students. God bless you for helping us help others.

If you need assistance, SVdP may be contacted at 262-367-0800. If you need food, the pantry is located at 229 Lawn Street, Hartland. It is open Tuesdays between 10 AM and noon. Evening hours are on the second and fourth Tuesday of the month between 5:30 PM and 7 PM.

***The pantry will close when Arrowhead schools close for inclement weather or when the food pantry manager deems conditions are unsafe for travel.*



ST. CHARLES DINING OUT!
Endter's Sports Grill in Hartland
Sunday, Feb. 21st - 4 pm to 10 pm

Mention St. Charles and Endter's will donate \$5 for each large pizza or \$3 for each small pizza to St. Charles School.

Offer good for dine in or carry out. For carry out call 262-369-0079.

Remember to buy SCRIP for Endter's in the Parish Office and then spend it on February 21st.



**REMEMBER YOUR SCRIP
FOR VALENTINE'S DAY!**

Remember to use Scrip for your Valentine's Day shopping and gift giving. Remember, when you buy products with Scrip gift cards, you support our parish and school! You can order gift cards through their website (www.shopwithscrip.com) and have them sent to St. Charles' Parish Office to pick up. You are also able to fill out the paper order form at the Parish Office to receive your order. Thank you for supporting St. Charles!



**PARISH SUPPORT
FOR THE WEEKEND OF
DECEMBER 20TH**

FISCAL YEAR BEGAN JULY 1ST

2020-2021	
Envelopes.....	\$193,055.48
Offertory.....	\$5,674.13
Weekend Total.....	\$198,729.61
E-Giving.....	\$13,165.50
YTD.....	\$1,090,996.96

2019-2020	
Envelopes.....	\$103,865.50
Offertory.....	\$8,724.23
Weekend Total.....	\$112,589.73
E-Giving.....	\$9,884.60
YTD.....	\$974,116.05



EVENTS & NEWS AT
ST. CHARLES PARISH SCHOOL

ANNUAL DEVELOPMENT FUND

Help continue the blessed tradition of Catholic education!

Thank you to everyone who has generously donated to our Annual School Development Fund so far this year!

Wondering what the ADF is? It helps bridge the gap between the actual cost to educate a child at St. Charles School and the current tuition – currently a gap of over \$2,400 per student. The ADF has allowed St. Charles to keep tuition rates (currently \$3,675 for the 2020-2021 school year) at one of the lowest levels of all private schools in Waukesha County.

Our 2020-2021 ADF fundraising goal is \$50,000. All money raised will support the mission of St. Charles Parish School by ensuring we have the proper equipment, textbooks, and resources; supporting teacher and faculty salaries; and helping us “keep the lights on.”

There are three easy ways to support our campaign:

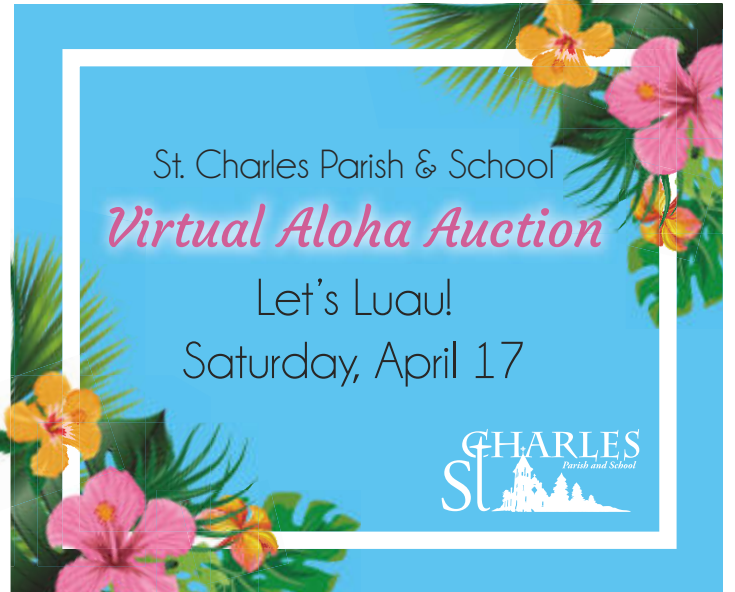
- E-giving is available through the St. Charles School website. Go to school.stcharleshartland.com and click on the “Donate” tab at the top of the page. Please choose “Annual School Development” under E-giving.

- Drop off your donation in the Parish Office and label the envelope ADF.

- Mail your donation to the St. Charles School Office. Checks should be made out and sent/delivered to:

Annual School Development Fund
526 Renson Rd
Hartland, WI 53029

Your support of this important fundraising campaign is truly appreciated!



St. Charles Parish & School
Virtual Aloha Auction

Let's Luau!
Saturday, April 17



WE NEED YOUR HELP!

Wondering how you can help us with the auction? We are adding a new event to the auction this year – Themed Baskets! Baskets will consist of the following themes:

- Gift Cards • Technology and Gadgets • Spa/Relaxation
- Wine and Spirits • Sports and Tailgating • Wisconsin Outdoors

Items can be donated during designated dates in January and February during school drop-off. Volunteers will be located at the School Office and Gym drop-off locations from 8-8:30 am on [Friday, February 5](#) and [Thursday, February 11](#). If you are interested in donating, please visit our website and check out the "Auction Themed Baskets" article under the News section for more information and the donation intake form. Thank you for your support!



ATTENTION, ALUMNI OF ST. CHARLES!

As we kick off Catholic Schools Week, we would love to celebrate everyone who has been a part of our history. We will be showcasing your achievements in upcoming communications (our bulletin, social media, website, and parishioner emails) and would like to know of any new updates in your life: marriage, new baby, college acceptances, new career or business, etc. If you are interested in sharing your news with us, please email our School Office at school@stcharleshartland.org. We can't wait to hear your good news!



St. Charles Spirit Wear Sale

February 12th - 22nd

Here's your chance to buy Spirit Wear one last time before the end of this school year. The Spirit Wear Sale is running from Friday, February 12th through Monday, February 22nd. Due to the COVID pandemic, Try-On Weekend will not occur at St. Charles.

All orders must be placed via the parish or school website through Mid-City Sports. This is a fundraiser, and Mid-City Sports will generously donate a portion of each sale back to St. Charles Parish and School. Thank you Mid-City Sports!

The sale will be held until midnight on Monday, Feb. 22nd! Orders cannot be accepted after that time. Delivery is expected in late March. School families and parishioners will be contacted by Mid-City Sports regarding pick up. Just a reminder that all sales are final.

If you have any questions regarding the sale, please contact Renee Krier, St. Charles Communication Specialist, at rkrier@stcharleshartland.org.

Note: If minimum order is not met the sale will not be fulfilled and you will be contacted.

Also, damaged goods must be returned to Mid-City Sports within 45 days.

Get your Spirit Wear NOW!
The next sale won't be until Fall 2021.





KNIGHTS OF COLUMBUS®

Knights of Columbus 3562 Kettle Moraine Council

CHARITY MEAT RAFFLE

Saturday, February 20th

12 Noon until 4:00 pm

Gina's Sports Dock

W278 N2345 Prospect Ave. on Pewaukee Lake

Four (4) Major Raffles Per Hour

Top Quality Steaks & Seafood from

Albrecht's Sentry in Delafield

Porterhouse, Ribeye, or T-Bone Steaks;

Pork Ribs; Surf & Turf

Complete Take Home Heat-&-Eat Brisket Meals

Three (3) or Four(4) Paddle Raffles/Hour

With Food and Drink Prizes

50/50 Cash Raffle along with

Basket Raffles worth over \$100 each

All profits to benefit the K of C Charity Fund

assisting persons with a variety of needs



WOMEN'S CARE CENTER PRESENTS

A COMPLIMENTARY LADIES' EVENT

"OUR DESIRE TO GO DEEPER WITH HIM - PREPARING FOR OUR LENTEN JOURNEY"



FEATURING

LYDIA LOCOCO, D. MIN.

DIRECTOR OF

COMMUNITY

RELATIONS FOR THE

ARCHDIOCESE OF

MILWAUKEE

Oconomowoc Lake Club

Tuesday, Feb. 16

11:00am - 1:00pm

Covid precautions in place and space is limited.

RSVPs required to sarah@wccmil.com

Women's Care Center helps pregnant women from our communities choose life for their babies, have healthier pregnancies, become better parents, and take first steps to self-sufficiency.



REDEMPTORIST RETREAT CENTER

REST · REFLECT · RENEW

WEEKEND SILENT PREACHED RETREATS FOR WOMEN

"Living in a Time of Plentiful Redemption"

Redemptorist Retreat Center

1800 N Timber Trail Lane, Oconomowoc

March 19-21, 2021 or March 26-28, 2021

Although many parishes have scheduled to attend retreats on specific weekends as a group, individuals or groups from any parish are free to choose to attend a retreat on any of the indicated weekends.

The silent weekend preached retreat offers time for private prayer and rest, group meditation, Spiritual Conferences, daily Eucharist, an opportunity for the Sacrament of Reconciliation, spiritual consultation, Adoration of the Most Blessed Sacrament, Devotion to Our Mother of Perpetual Help, Lectio Divina, and enjoying the beautiful grounds.

To register by phone, call 262-567-6900, by email rrc@redemptoristretreat.org or online at <https://www.redemptoristretreat.org/shop>.

Arrival/Check-in begins at 6:15 pm on Friday, followed by welcoming/orientation at 7:30 pm (Note: No evening meal is served on Friday). The retreat concludes after the noon meal on Sunday.

FUTURE RETREATS AT THE REDEMPTORIST RETREAT CENTER

Ash Wednesday Day of Prayer - February 17, 2021

Pre-registration is required

To register by phone 262-567-6900

To register by email: rrc@redemptoristretreat.org

Weekend Silent Preached Retreats for Men

"Living in a Time of Plentiful Redemption"

February, March and April weekends available

To register visit <https://www.redemptoristretreat.org/shop>

Holy Week Silent Preached Retreat

March 29 - April 3, 2021

Theme: "Walking With Jesus to Jerusalem and Redemption"

Presenter: Fr Richard Thibodeau, C.Ss.R

To register visit <https://www.redemptoristretreat.org/shop>

Annual Preached Retreats for Women Religious and Women

5-Day Retreat or 7-Day Retreat

in June and July 2021

Theme: "The Journey of Faith from Transition to Transformation"

To register visit <https://www.redemptoristretreat.org/shop>

Steve & Joyce BERGELIN
www.SteveandJoyceBergelin.com

REALTY EXECUTIVES
INTEGRITY
(262) 424-8753

TODD WANGERIN ELECTRIC, Inc.
Free Estimates - Licensed - Insured
Over 20 years experience
Todd Wangerin 262-719-4411
twelectric4411@att.net

BIEBEL'S True Value.
Hardware & Rental
HARTLAND
580 Hartbrook Dr. • 369-1070

Oconomowoc Landscape Supply & Garden Center
Landscape Supplies • Annuals
Perennials • Trees & Shrubs
Increase your Home's Value Enjoy a Beautiful Landscaped Yard
262-567-1777
www.olandscape.com • Corner of K & 67 at bypass

We Help You Travel Better!
262.567.6658
TLJournneys.com
TRAVEL LEADERS

Complete line of Hispanic & American Groceries.
We specialize in fresh corn tortillas, Mexican bakery and our famous El Rey Tostadita Chips.
Serving Milwaukee Since 1978
El Rey Family Market 3520 W. Oklahoma Ave. 414-943-1940
El Rey Plaza 3524 W. Sherman St. 414-943-1816
El Rey Food Mart 1022 W. Sherman St. 414-388-7786

Holzhauser, Hewett & Barta s.c.
Orthodontic Care For Children And Adults
Daniel Holzhauser DDS MS | Charles Hewett DDS MS | Joshua Barta DDS MS
520 Hartbrook Dr., Hartland
2516 N. Grandview Blvd, Waukesha
10225 W. Capitol Dr., Wauwatosa
www.hhortho.com
262-567-7076
262-547-6365
414-463-5700

BUNZEL'S OLD FASHIONED MEAT MARKET
Fresh Custom Cut Choice Meats
Party Trays • Catering
Thank You For Supporting A Family Tradition
9015 W. BURLEIGH 873-7960
www.bunzelmeats.com

Lake Country Financial Group LLC
Steven R. Seibel, CLU, ChFC, LUTCF
Financial Advisor
(262) 646-4115
Securities offered only through Citigroup Investment Services, Inc., a registered broker-dealer and member FINRA/SIPC. Lake Country Financial Group LLC and Citigroup are separate and unaffiliated entities. Advisory services offered through Citigroup Advisors, Inc., a registered investment advisor.

FOOT & ANKLE Associates of Wisconsin
Parish Member
Dr. Amy Galati
Call: (262) 542-3779
www.footandanklewi.com

KOWAL INVESTMENT GROUP
The Retirement Specialists
Aaron T. Kowal, CFP®
W238N1660 Busse Rd., Ste. 100, Waukesha, WI 53188
262-522-4040
www.kowalinvestmentgroup.com
Securities offered through Raymond James Financial Services Inc. Member FINRA and SIPC. Investment Advisory Services offered through Raymond James Financial Services Advisors, Inc. and Kowal Investment Group, LLC. Kowal Investment Group, LLC is not a registered broker-dealer and is independent of Raymond James Financial Services.

Hartland Family CHIROPRACTIC
211 Cottonwood Ave, Hartland
(262) 367-7424
www.hartlandchiro.com
Dr. Hans Halaska

Call us to schedule your free, no obligation, financial check-up today.

Pat's Heating & Air Conditioning
30 YEARS OF EXCELLENCE
262-567-7499
OCOMOWOC
www.patsheating.com

PROTECTING SENIORS NATIONWIDE MEDICAL ALERT SYSTEM
\$29.95/MO
BILLED QUARTERLY
CALL NOW! 1.877.801.7772 - WWW.24-7MEDALARM.COM

Hartland Family CHIROPRACTIC
211 Cottonwood Ave, Hartland
(262) 367-7424
www.hartlandchiro.com
Dr. Hans Halaska

TOWN BANK
AWINTRUST COMMUNITY BANK
800-433-3076
www.townbank.us

WE'RE HIRING AD SALES EXECUTIVES
• Full Time Position with Benefits
• Sales Experience Preferred
• Paid Training
• Overnight Travel Required
• Expense Reimbursement
CONTACT US AT careers@4LPI.com
www.4LPI.com/careers

NEVER MISS A BULLETIN!
Sign up to have our weekly parish bulletin emailed to you at www.parishesonline.com

TOWN BANK
AWINTRUST COMMUNITY BANK
800-433-3076
www.townbank.us

BUDGET BLINDS of LAKE COUNTRY
262-309-6710

R&R INSURANCE
Rick Kalscheuer
Parish Member
800.566.7007 | MyKnowledgeBroker.com

Seven Seas on Nagawicka Lake
Casual & Fine Dining
Sunday Brunch
sevenseaswi.com 262-367-3903

MICHAEL J. FINN S.C.
ATTORNEY AT LAW
PARISH MEMBER
262-367-8485
mjfinnsc@sbcglobal.net
163 E. Capitol Dr., Hartland, WI 53029

VISU-SEWER, INC.
262-695-2340
Professional Sewer Inspection, Maintenance and Rehabilitation Services
Parish Members
www.visu-sewer.com

DON CULL EXCAVATING
W298 N9248 Center Oak Rd
Septic & Mound Systems Grading
966-7038
MPRS 221589

LAKE COUNTRY REAL ESTATE
Scott Heyerdahl
262-719-6970
Sheyerdahl@firstwebcor.com

SPREAD THE WORD
A Thriving, Vibrant Community Matters
SUPPORT OUR ADVERTISERS

CHARLES St. Charles School
St. Charles School... We choose Christ in learning, living, & values in the light of our faith.
262-367-2040
www.stcharlesschoolhartland.com

JENSON MOTORS Auto - Truck Repair
Hours: Mon-Fri 7:30-5:30
Proprietor: Guy Jenson
262-367-5556
364 Cottonwood Ave., Hartland, WI

Hartland Terrace Assisted Living
• RN Lead 24-Hour Elite Care Team
• Full Continuum of Care • Memory Care
• All Inclusive Pricing • Private Studios
• Family Centered Care Model
327 North Avenue • Hartland | 262-369-4391
www.hartlandterrace.com

PATRIOT PLUMBING, INC.
COMMERCIAL AND RESIDENTIAL
www.patriotplumbingwi.com
Earl Cull • 262-966-2284
MP221857 107112RT 107113RMT

Culver's
701 Industrial Ct., Hartland
262-367-5800

North Lake Family Dentistry
Patty Erickson, D.D.S.
W315N7641 Hwy 83, North Lake, WI
Phone: 262.966.7668
www.nrlakefamilydentistry.com
northlakefamilydentistry@gmail.com

KLINK'S KARPETS, INC
Hartland's Floor Covering Center
Family Owned & Operated for over 47 Years
Carpeting & Hard Surfaces
107 North Ave. Hartland, WI
367-4670 Parish Member

FOX BROS.
206 Cottonwood
262-367-2922
1700 DOWEN ST.
262-567-8376
Open 7 days a week
6am-9pm

ECHO LAWN'S
Henry & Diane Barwinski, Co-Owners
A Complete Lawn, Landscape, and Snow Removal Service
Milwaukee Lake Country
414-462-6670 262-695-8152

AVAILABLE FOR A LIMITED TIME
ADVERTISE YOUR BUSINESS HERE
Contact Jeff Tkachuk to place an ad today!
jtkachuk@4LPI.com or (800) 950-9952 x2513

DAVE PERRY
heating cooling
Proudly Serving the Lake Country Area for more than 20 years
Heating • Air Conditioning • Geothermal New Construction • Replacement
262.966.1959
www.daveperryheatingandcooling.com

Too Sick for Mass?
SUPPORT OUR PARISH NO MATTER WHERE YOU ARE!
Sign-up to get your bulletin delivered right to your inbox!
www.parishesonline.com

SPRUNG ARMSTRONG AIR
Heating, Sheet Metal & Well Pump Service
7024 Main St., Merton
538-1400
Service • Repair & New Construction
Residential & Commercial
Parish Members

Lake Country Eye Care
520 Hartbrook Dr., Hartland, WI 53089
Amber A. Dent, OD - Parishioner
www.lakecountryeyecare.com
262-367-6610

Generations DENTAL
Jim Muenstberger, D.D.S.
and Kelly Newman, D.D.S.
Parish Members
100 E. Capitol Dr.
Hartland, WI 53029
Office: 262-367-9797
General Dentistry • Endodontics

Palmer's STEAKHOUSE
www.Palmersteakhouse.com
122 E. Capitol Dr. • Hartland, WI
262-369-3939

Bob Hamilton
207 E. CAPITOL DRIVE • HARTLAND, WI 53029
262.367.2312
BHAMILTO@amfam.com

EH
Emanuele & Haut, CPAs, SC
Certified Public Accountants
Parish Member
142 E. Capitol Dr. Hartland, WI
262.367.1040
sam@ehcpas.com

SUPPORT YOUR LOCAL PARISH.
Buy a bulletin ad space today!

REICHL & KOLSTAD ORTHODONTICS
Dr. Peter Reichl & Dr. James Kolstad
look forward to meeting you!
Offering Traditional Braces & Invisalign
Located in Waukesha, Mukwonago & Hartland
262-547-2827
www.ReichlKolstadOrtho.com

UnitedDrivingSchoolWI.com
ENROLL TODAY!
262-369-3939

Wolf Electric LLC
Commercial, Industrial, Residential
Garrett Wolf • Master Electrician/Parishioner
Commercial • Industrial • Residential
(262) 224-7310 • www.wolfelectricllc.com

ADT-Monitored Home Security
Get 24-Hour Protection From a Name You Can Trust
Burglary • Fire Safety • Flood Detection • Carbon Monoxide
1-855-225-4251

WEALTHSPIRE ADVISORS
Brion Collins
CFP® Professional & Parishioner
262.326.6090 | www.wealthspire.com
We salute the St. Charles community and all who make such a profound difference.

What Will Be Your Legacy?
If you value your faith and your family, I welcome the opportunity to share my faith-based perspective in union with my financial experience in order to co-create a personal legacy strategy. I can assist with: Portfolio Management | Retirement Planning | Financial & Legacy Strategies | Special Needs Planning
Kurt Maltby, CFP®, CHsNC®
CERTIFIED FINANCIAL PLANNER™
Associate Vice President, Financial Advisor
Morgan Stanley
20975 Swenson Drive, Waukesha
Phone: (262) 523-8303 | NMLS # 1504808
advisor.morganstanley.com/the-riverwood-wealth-management-group

EVERETT LUKO FUNERAL HOME
262-167-2150
PASSAGES
Cremation Service

CARPET PLUS, INC.
We Bring the Showroom to You!
(414) 573-0105
Dan Taylor, Parish Member

Pella Upgrade your home with beautiful styles
Replace now and give your home a fresh point of view
Pella Windows & Doors of Wisconsin has all the styles, finishes, and hardware to give your home a new look with upgraded energy efficiency. Whether you're interested in wood, fiberglass, or vinyl, Pella has the windows and doors to enhance your home, inside and out.
Visit PellaWI.com for our latest offers.
Mention this ad when you schedule your free, no-obligation consultation and at your appointment, receive a **free \$50 gift card*** good for dining, beverages, or theatre admission for the luxury Silverspot Cinemas at the Corners of Brookfield!
*Limit one per household, while quantities last.
Gina Della
General Manager
Pella Pella Windows & Doors Of Wisconsin
© 2020 Pella Corporation
Visit the Pella Windows & Doors of Wisconsin showroom nearest you:
Brookfield - Green Bay - Madison - Appleton | PellaWI.com | 877.687.0657

H+p CERTIFIED PUBLIC ACCOUNTANTS
Mark G. Hayes, CPA
262-367-5505 • 262-367-0545 Fax
365 Cottonwood Ave., Suite A • Hartland, WI 53029
mark@hpcpa.tax • www.hpcpa.tax

payrollDATA
1020 James Drive, Ste O
Hartland, WI 53029
262-563-5150
www.payrolldata.com

PAUN Construction
Specializing in Masonry Residential & Commercial
W300 N7741 Christine Ln., Hartland, WI 53029
Robert J. Paun (262) 326-8043
www.paunconstruction.com
mail@paunconstruction.com

DUNN INVESTMENT MANAGEMENT GROUP
of RBC Wealth Management
James P. Dunn
Managing Director - Financial Advisor
Senior Portfolio Manager - Portfolio Focus
18500 West Corporate Drive, Ste. 100
Brookfield, WI 53045
Call (262) 395-1101 for an appointment
james.dunn@rbc.com
• Customized portfolio management & investment consulting for individuals & institutions
• Comprehensive investment advice & retirement planning
• Recently retired or changed jobs?
Providing specialized 401K rollover solutions
A Division of RBC Capital Markets LLC NYSE/FINRA/SIPC

SPORTS GRILL
PIZZA • FRIDAY FISH FRY • SANDWICHES
*\$5.00 OFF ANY 16" PIZZA
*SUNDAY'S "KIDS EAT FREE" WITH ADULT PURCHASE
We do Parties & Catering!
Not valid with any other offers or coupons
369-0079
300 COTTONWOOD • HARTLAND
PARISH MEMBER

GOOD TIMES DAY CAMP
262-521-8100 - WWW.GOODTIMESWI.COM
Where happiness and wonderment come to play!
• Now Enrolling Ages 3 - 15
• 15 Acres & 2 Heated Pools
• Many Athletic Fields
• Swimming Lessons Included
• Field Trips Included
• Bussing to/from Hartland
• Bussing to/from Brookfield
• Worry Free Scheduling
• Low Ratio's
• Accepting Counselor Applications
Where challenges are met, goals are accomplished, and friendships and memories made last a lifetime!

SPREAD THE WORD
A Thriving, Vibrant Community Matters
SUPPORT OUR ADVERTISERS

Please Support these **CONTRACTORS**
Thank You to these contractors helping St Charles grow!

GOOD TIMES DAY CAMP
262-521-8100 - WWW.GOODTIMESWI.COM
Where happiness and wonderment come to play!
• Now Enrolling Ages 3 - 15
• 15 Acres & 2 Heated Pools
• Many Athletic Fields
• Swimming Lessons Included
• Field Trips Included
• Bussing to/from Hartland
• Bussing to/from Brookfield
• Worry Free Scheduling
• Low Ratio's
• Accepting Counselor Applications
Where challenges are met, goals are accomplished, and friendships and memories made last a lifetime!

Vicki Marciniak
When it comes to your home, it's more than just business, it's personal.
Cell: (414) 243-5584
vmarciniak@firstweber.com
www.VickiMarciniak.FirstWeber.com

NELCO ELECTRIC, INC.
GERMANTOWN, WI
Commercial • Industrial • Residential
24 Hour Service 262-502-9950
WWW.NELCOELECTRIC.COM
Barb Jarchow Parishioner

zimmerman
ARCHITECTURAL STUDIOS, INC.
300 West 9th Street, Appleton, WI 54912 | www.zimmerman.com
(920) 838-9300
(920) 838-9300

FRONTIER
TITLE & CLOSING SERVICES, LLC
1130 James Drive, Hartland, WI 53029
Office: 262-361-4466 Fax: 262-361-4462
www.frontiertitlellc.com
Frontier Title & Closing Services, LLC
Lake Country's Most Experienced Title & Closing Company
Specializing in Residential, Commercial & New Construction Transactions
Serving the Real Estate Community!

BUILDERS Hunginger
SINCE 1907
Kevin O'Toole, Parish Member
Construction Manager General Contractors
Brookfield, WI 262-797-0797

zimmerman
ARCHITECTURAL STUDIOS, INC.
300 West 9th Street, Appleton, WI 54912 | www.zimmerman.com
(920) 838-9300
(920) 838-9300

Lifetime Door Co
GARAGE DOORS • DOOR OPENERS • REPAIRED OR REPLACED
SALES • SERVICE • INSTALLATION
262-567-9203