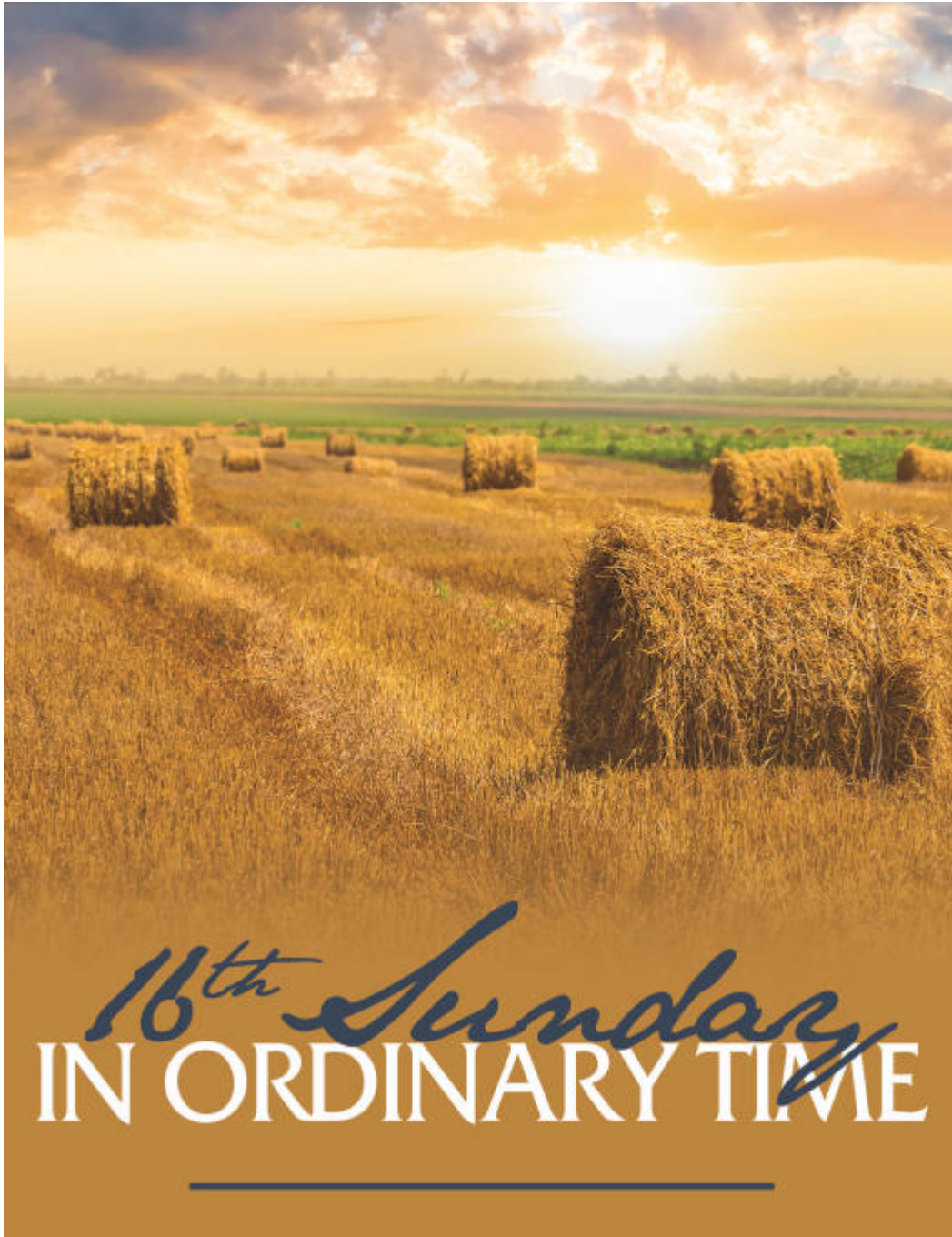




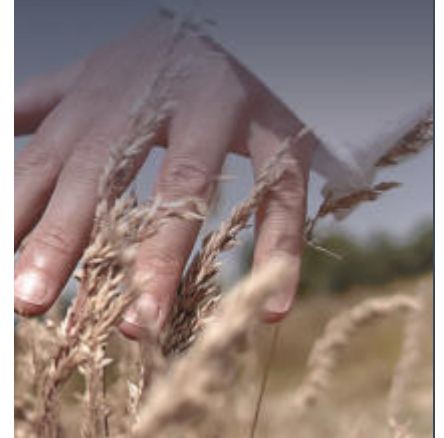
*At St. Charles, all are invited to
meet Christ, know Christ,
love Christ and serve Christ.*

July 19, 2020

SIXTEENTH SUNDAY IN ORDINARY TIME



“Let them grow together until harvest; then at harvest time I will say to the harvesters, “First collect the weeds and tie them in bundles for burning; but gather the wheat into my barn.””
(Mt 13:30b)



313 Circle Drive, Hartland, WI 53029 • 262-367-0800
www.stcharleshartland.com • email: parish@stcharleshartland.com



WELCOME TO ST. CHARLES

PASTOR: Fr. Ken Omernick

ASSOCIATE PASTOR: Fr. Nick Baumgardner
nbaumgardner@stcharleshartland.org

TRANSITIONAL DEACON: Dcn. Tim Schumaker
tschumaker@stcharleshartland.org

PASTORAL ASSOCIATE: 262-367-6704

Elizabeth Thompson, ethompson@stcharleshartland.org

Celiac Contact: Rose Thomas: rctihm@yahoo.com or 630-915-6601

PARISH OFFICE: Can call 262-367-0800, Mon. - Fri., 8 am - 4 pm

FOYER HOURS FOR DONATIONS: Mon. - Fri., 7 am - 3:30 pm

Assistant to the Pastor:

Terrie Carew, Ext. 202, tcarew@stcharleshartland.org

Parish Receptionists:

Debra Hertel, Ext. 226, dhertel@stcharleshartland.org

Joann Papa, Ext. 226, jpapa@stcharleshartland.org

Parish Administrative Assistants:

Kathy Gillstrom, Ext. 200, kgillstrom@stcharleshartland.org

Dee Anne Hamer, Ext. 200, dhamer@stcharleshartland.org

DIRECTOR OF ADMINISTRATIVE SERVICES:

Marge Beck, Ext. 201, mbeck@stcharleshartland.org

DIRECTOR OF OPERATIONS:

Mike Cattani, Ext. 229, mcattani@stcharleshartland.org

DIRECTOR OF MAINTENANCE:

Tim Orzechowski, Ext. 217, torzechowski@stcharleshartland.org

COMMUNICATIONS SPECIALIST & BULLETIN:

Renee Krier, Ext. 224, rkrier@stcharleshartland.org

PARISH SCHOOL: 262-367-2040, school@stcharleshartland.com

PRINCIPAL:

Dan Garvey, Ext. 208, dgarvey@stcharleshartland.org

School Administrative Assistants:

Lisa Moehrke & Karen Dejewski, Ext. 206

ADVANCEMENT OFFICER: 262-361-5000

Allison Caswell, acaswell@stcharleshartland.org

DEPARTMENT OF CHILDREN'S FORMATION: 262-367-3277

Director of Children's Formation (PS-5):

Alicia Van Hecke, Ext. 205, avanhecke@stcharleshartland.org

Administrative Assistant:

Trish Gilchrist, Ext. 230, tgilchrist@stcharleshartland.org

DEPARTMENT OF STUDENT & YOUNG ADULT MINISTRIES:

262-367-3277 Ext. 221 or lifeteen@stcharleshartland.org

Director of Student & Young Adult Ministries: Nick Scanlan

Associate Director (EDGE 6-8): Rachel Heffron

Administrative Assistant: Laura Zgrabik

DEPARTMENT OF LITURGICAL MUSIC:

Director of Liturgical Music & Children's Choir Director:

Scott Currier, Ext. 225, scurrier@stcharleshartland.org

Associate Musician:

Kathleen Latzke-Daley, Ext. 215, kldaley@stcharleshartland.org

Liturgical Music Assistant:

Maria Notch, Ext. 215, mnotch@stcharleshartland.org

Liturgical Administrative Assistant: TBD

DIRECTOR OF ADULT & FAMILY MINISTRY:

Nancy Neuser, Ext. 210, nneuser@stcharleshartland.org

DIRECTOR OF STEWARDSHIP:

Nancy Van De Laarschot, Ext. 214,
nvandelaarschot@stcharleshartland.org

DIRECTOR OF DISCIPLESHIP:

Jess Panlener, Ext. 212, jpanlener@stcharleshartland.org

We are here for YOU!

To contact the office call (262-367-0800) or
email us (parish@stcharleshartland.org)
with any questions or concerns.

To drop off a food donation or financial support,
the church "foyer" (main entrance) will be open
Monday through Friday from 7 am to 3:30 pm

Also visit our website at
www.stcharleshartland.com daily for
Live Streaming and current information!

Sacrament of the Sick

By appointment with Fr. Ken or Fr. Nick (schedule by calling the Parish Office).

Reconciliation

Thursdays: 5:00pm - 6:00pm or by appointment (schedule by calling the Parish Office).

Join our Parish

Contact the Parish Office during office hours at 262-367-0800 or parish@stcharleshartland.org.

Planning to be Married?

Congratulations! Please notify St. Charles at least six months in advance. Weddings may be celebrated on Friday evenings and Saturdays at 11:00am and 2:00pm. Exceptions are made only with the permission of the Pastor. **Please contact Dee Anne Hamer at 262-367-0800 Ext. 222.**

Are you expecting or adopting a child?

St. Charles is honored to serve parents seeking Baptism for their child(ren). To find out more information about our preparation process and to schedule infant/child Baptisms, **please contact the Parish Office at 262-367-0800.**

Becoming FULLY Catholic

Are you unbaptized or baptized in a different Christian faith and considering becoming Catholic? Are you a baptized Catholic who did not receive the Sacraments of Reconciliation, Eucharist and/or Confirmation? St. Charles provides an adult formation process that will help you discover Jesus and His Holy Catholic Church. **Please contact Jess Panlener at 262-367-0800 Ext. 212.**

Small Groups

The Small Group movement at St. Charles offers you a way to authentically seek Jesus in small faith sharing communities. Small Groups gather in members' homes throughout Lake Country during Fall and Lent. For more information, **please contact Jess Panlener at 262-367-0800 Ext. 212.**

OUTREACH SERVICES TEAM: Terri Blazek: 262-367-7608,

jtblazek@wi.rr.com

Prayer Network: prayernetwork@stcharleshartland.org

St. Vincent De Paul: if you need food, shelter or assistance call 262-367-0800 (Parish Office)

**Need Home Communion (temporarily suspended):
For information call 262-367-0800 (Parish Office)**

**Mass Intentions for
the Week of July 19th**



Sunday, July 19

- 7:00 am † Rita Jungbluth
- 9:00 am † Sandy Hanus
- 11:00 am Living and Deceased Members of St. Charles
- 6:00 pm † Mary Lu Boemer

Monday, July 20

- 8:30 am † Mary Wenstrom

Tuesday, July 21

- 8:30 am † Jeff "Boo" Boerger

Wednesday, July 22

- 8:30 am † Rose Geason

Thursday, July 23

- 8:30 am † Jim Dibb

Friday, July 24

- 8:30 am † Ken Mautz

Saturday, July 25

- 8:30 am † Brian Gillstrom
- 5:00 pm † Lawrence Majewski

Sunday, July 26

- 7:00 am † Benjamin Couillard
- 9:00 am † Patrick Flannick
- 11:00 am † Jeanette Sedlar
- 6:00 pm Living and Deceased Members of St. Charles



Wedding Banns

3rd Bann ~ Madeline Miller & Samuel Lamers



**Tuesday Evening Mass
Tuesday, July 21st at 5:30 pm**

Join us next week for the Monthly Tuesday Evening Mass by livestream or in-person. This Mass date has been changed from July 28th to the 21st to accommodate Confirmation rehearsals. Remember this Mass will be an opportunity to encounter some of the ancient treasures of the Mass.

Bulletin Advertisers of the Week

Please support our advertisers!

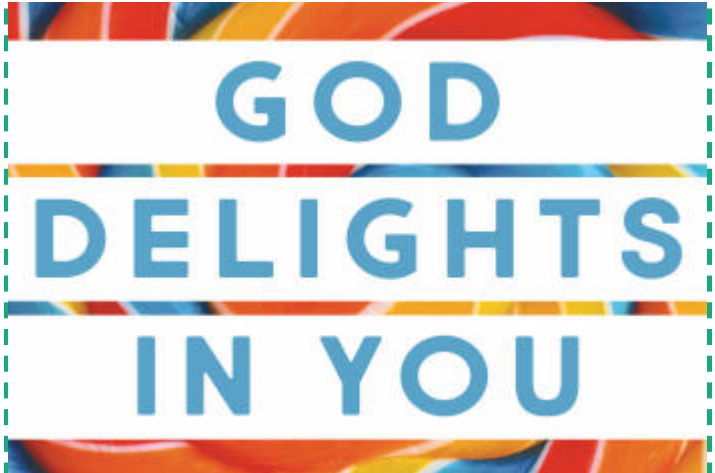
UnitedDrivingSchoolWI.com
ENROLL TODAY!

Elegant NAILS BAR
262-367-6688
600 Hartford Dr., Hartford
RECEIVE 20% OFF OF \$30 OR MORE



**Get to know JESUS by spending
15 minutes every day in prayer with Scripture!**

Reflection questions for Sunday, July 26th



- As a young man and new king of Israel, Solomon asks the Lord for the gift of wisdom. How do you exercise the virtue of wisdom in your daily life?
- How do you think Paul can assert with such certainty: "We know that all things work for good for those who love God?"
- Jesus offers several "end of the age" parables to the disciples: buried treasure and fine pearls (a priceless discovery) and the large catch of fish (an inclusive invitation). What do you think Jesus is teaching his disciples about the kingdom of heaven?

Readings for the Week of July 19th

- Sunday:** Wis 12:13, 16-19/Ps 86:5-6, 9-10, 15-16 [5a]/Rom 8:26-27/Mt 13:24-43 or 13:24-30
- Monday:** Mi 6:1-4, 6-8/Ps 50:5-6, 8-9, 16bc-17, 21 and 23 [23b]/Mt 12:38-42
- Tuesday:** Mi 7:14-15, 18-20/Ps 85:2-4, 5-6, 7-8 [8a]/Mt 12:46-50
- Wednesday:** Sg 3:1-4b or 2 Cor 5:14-17/Ps 63:2, 3-4, 5-6, 8-9 [2]/Jn 20:1-2, 11-18
- Thursday:** Jer 2:1-3, 7-8, 12-13/Ps 36:6-7ab, 8-9, 10-11 [10a]/Mt 13:10-17
- Friday:** Jer 3:14-17/Jer 31:10, 11-12abcd, 13 [cf. 10d]/Mt 13:18-23
- Saturday:** 2 Cor 4:7-15/Ps 126:1bc-2ab, 2cd-3, 4-5, 6 [5]/Mt 20:20-28
- Next Sunday:** 1 Kgs 3:5, 7-12/Ps 119:57, 72, 76-77, 127-128, 129-130 [97a]/Rom 8:28-30/Mt 13:44-52 or 13:44-46



READ. REFLECT. RESPOND. REST.

Cut out and keep in your Bible for reference!

ST. CHARLES PARISH CATHOLIC COMEBACK UPDATES

Most of the following information is from the weekly Friday priests' video, posted July 10 on the St. Charles website. These videos are only a couple minutes long and give parishioners the most up-to-date information as we navigate reopening the parish during Covid and as updates become available from the Archdiocese of Milwaukee's Catholic Comeback matrix. Fr. Ken, Fr. Nick and Dcn. Tim have a little fun sometimes while taping, too. Well worth watching!

St. Charles is trying to return to its "pre-Covid" schedule of prayer and worship opportunities. Come pray and worship with us!

- First, please know that tickets are no longer required for daily and weekend Masses as of July 13. (We thank you for your patience as we came to this decision.)
- Monday Evening Eucharistic Adoration will begin again starting this Monday, July 20 in the Chapel from 5pm to 7pm.
- Tuesday Evening Eucharistic Adoration will start this Tuesday, July 21 in the Chapel from 6:30pm to 8pm.
- Masks are still required for all prayer and worship opportunities including Masses, except at the Sunday 6pm Mass where masks are optional.
- First Communion Masses are scheduled for July 12, 19 and 26, and Confirmation Masses will be held July 30 and 31. These Masses will be live streamed for those who are unable to attend. Please join us in praying for all our First Communicants and Confirmants!

Here are other prayer and worship opportunities:

- The church is open for private prayer Monday through Friday from 7am - 3:30pm and on Saturdays from 7am to 2pm.
- Morning Prayer is in the church at 7:30am Monday through Friday and at 8am on Saturdays.
- The Rosary is prayed Monday through Friday at 8am in the church.
- Friday Eucharistic Adoration is in the Chapel from 9:15am to 3pm, followed by Benediction.

FAQ:

Now that tickets are no longer required, does that affect other requirements?

Even though we are no longer requiring tickets for Mass, we are still observing all social distancing protocols and Covid-appropriate cleaning standards. The Church, Borromeo Room and Parish Hall will remain at 25% seating capacity for a total of 280 seats available per Mass. Every other pew in the church will be left empty, and chairs will be spaced accordingly allowing for the minimum six-foot social distancing guideline. Parishioners are asked to follow usher directions and maintain social distancing when entering and exiting the parish.

In addition, masks are still required at all Masses, except for the Sunday 6pm Mass where masks are optional (for those who are unable to wear masks).



PARISH SUPPORT
FOR THE
WEEKEND OF
JUNE 7TH

2019-2020	
Envelopes.....	\$23,679.00
Offertory.....	\$290.12
Weekend Total.....	\$23,969.12
E-Giving for this week.....	\$11,537.70
YTD.....	\$1,845,848.42

2018-2019	
Envelopes.....	\$21,161.00
Offertory.....	\$2,006.56
Weekend Total.....	\$23,167.56
E-Giving for this week.....	\$7,576.34
YTD.....	\$1,869,338.25



MORE UPDATES ON THE 2020-2021 SCHOOL YEAR!

We have been actively planning for students to not only return to 5-days per week of face-to-face instruction but also to remain at St. Charles Parish School for the entire 2020-2021 school year. We are considering many factors for this Fall and are keeping the safety and well-being of students and staff our number one priority. We will take necessary and added steps to ensure the safety of all.

In addition to being back to in-person instruction, we are planning for other scenarios, as well. Our Distance Learning Team has been working quickly over the past couple of weeks to create a plan in the event we are directed to move to a remote learning environment. The team has designed a comprehensive plan that is manageable and will maintain high academic expectations, allow every student to be successful, provide opportunities for staff, students, and parents to strengthen their relationship with Christ, and ultimately allow students to continue to learn from home. The St. Charles Distance Learning Plan was shared with school families on July 17.

Another scenario that we are working on is creating a model that will allow students to continue learning if they are not able to come to school for an extended period of time due to illness and/or being directed to quarantine. Our Technology Committee is actively working to secure additional Chromebooks and technology for each classroom. Our goal is to ensure that students are able to continue learning regardless of their situation.

Please continue to keep St. Charles Parish School in your prayers!



2020 COMMUNION CLOTHING DRIVE

Do you have communion dresses, veils, suits, pants, shirts and other accessories that you would be willing to pass along to other families?

St. Charles Parish and School is collecting communion clothing that will be donated to families at St. Anthony School in Milwaukee. The Communion Clothing Drive takes place the **weekends of July 25th and 26nd & August 1st and 2nd.** During the weekends drop off the clothing as you enter or leave the church for Mass.

Thank you for your generosity. The families at St. Anthony's School will truly benefit from your kindness. For questions please email Terri Blazek, Outreach Services Committee Chair, at jtblazek@wi.rr.com.

ST. VINCENT de PAUL SOCIETY



FOOD PANTRY NEEDS: spaghetti sauce, mandarin oranges, brownie mix, liquid dish soap and paper towel.

Thank you for your support of St. Charles' St. Vincent de Paul (SVdP) Society. Your financial and food donations have helped to clothe, feed, and house many suffering area families. Please keep those who contact our ministry for help, our food pantry patrons, and our members in your prayers. Are you interested in being personally involved with families in need? Please contact SVdP at the number listed below to learn more about joining our ministry of service to the poor and needy.

If you need assistance, contact SVdP at 262-367-0800. Are you or someone you know in need of food? SVdP operates a food pantry located at 229 Lawn Street, Hartland, and is open Tuesdays between 10 am and noon. It is open evenings on the second and fourth Tuesday of the month from 5:30 pm to 7 pm. Face masks are required to protect our patrons and volunteers.



2020 FALL FEST SPONSORSHIP

We are excited to announce that 2020 Fall Fest will be the Lake Country festival of the summer! When you or your business sponsors Fall Fest, you are supporting our community and St. Charles mission efforts to help many in need. The online process to make a donation is simple! See what one sponsor said:

"It could not have been any easier. Super smooth and it seems like a great way to do it. :) We are looking forward to Fall Fest also and I am just glad it's still happening". ~ Julie (Fall Fest 2020 Sponsor)

Calls have already started to be made to last year's generous sponsors, but if you would like to make a donation, please visit the parish website or contact Jill Herkowski at jpherkowski@gmail.com.

Here's a sneak peek at this year's entertainment line-up: THE MANTZ BROTHERS from Nashville, local favorite CHERRY PIE, and of course, Fall Fest crowd pleaser PAT MCCURDY! We are so excited to have them all back and can't wait to get this party started!

EVERYDAY STEWARDSHIP RECOGNIZE GOD IN YOUR ORDINARY MOMENTS

DO WHAT NEEDS TO BE DONE

A friend recently confided in me that although he prayed frequently each day and was involved heavily in his parish, he did not sense much fruit coming from it all and was left feeling unsatisfied. I assured him he was not alone. I told him of a deceased pastor of mine who had spoken frequently about being in this type of situation. Even as a priest, he knew all too well of how we can feel like we are simply going through the motions. It is precisely at those times that continuing to pray and practicing good stewardship is most important, because it would be easier to simply take a break and risk never

coming back. He liked to say, “Do the drill,” meaning just do what needs to be done.

We are all called to be mature disciples who answer the call of Jesus Christ regardless of the cost. We cannot choose when and where the call will come. We cannot schedule our stewardship in a way that is always most convenient for us. Even when the fruits of our faithful efforts seem hidden from us, we hold to the promise that we are never called to give of ourselves for nothing. God is working through us and in us. No matter how dry the land may seem, seeds are being planted to yield a harvest greater than we can ever realize. Stay strong and do the drill!

— Tracy Earl Welliver, MTS

©LPi

THIS WEEKEND'S GOSPEL MEDITATION

16TH SUNDAY IN ORDINARY TIME

Grace and sin, belief and unbelief, good and evil all exist together. While we wrestle with these two dimensions of reality inwardly, they are also witnessed in the actions and words of others. Many, all too often, beat themselves up because of their sin. We are also all too quick to pass judgment on others whom we perceive to be in error and walking down a wrong path. God does not make rash judgments, nor should we. Patience is the order of the day as is an understanding that God is ultimately the caller of the shots.

Our faith tells us that while God allows the wheat and the weeds to coexist, the wheat will always triumph. As long as we can cultivate even a little faith and a small measure of desire for God, He can produce abundant blessings and good things. Even when the weeds seem to have triumphed, there still may be a small measure of faith remaining that can be cultivated and grown. It doesn't take much! Unless a person totally allows the weeds to reign, there is always to be found at least a small measure of faith, good, light, and love. With even this small portion, God can produce abundant growth.

Admittedly, it is easy to give into the weeds, and they grow very quickly. Any gardener knows this to be true. Sometimes, the weeds even seem more attractive and vibrant. Dealing with weeds can quickly become a losing battle, and they can look healthier and grow faster than the very plants

we are trying to protect. It's easy to give into them and let them win. While God will deal with all things in due time, we are responsible for keeping things in check in the short term. It is our task to keep our eyes fixed on God's presence and mercy. We are asked to avoid judgment. And, it is not our responsibility to deal with the weeds in someone else's garden, only our own. One garden is enough responsibility for anyone.

Weeds have power. We have to realize this. While they can appear attractive and healthy, they can quickly choke us off from God's presence. Our task is one of maintenance and cultivating a desire for God. Even the smallest kernel of faith can grow into something wonderful. In God's time, the eternal harvest will come, and we will no longer have to worry about the weeds.

©LPi



CELEBRATING THE SACRAMENTS

WEDDINGS & BAPTISMS

We are excited to share with you the many Baptisms and Weddings that have happened at St. Charles since the beginning of the year! We know that as we navigate living in the Covid world, parents and couples have continued to yearn for our Lord in the Sacraments. We truly are blessed at St. Charles to see so many young adults wanting to pass down the Catholic faith to their children and couples who recognize God at the center of their unity. Please pray for all these baptized children and their parents and for our newly married couples.



Vanessa Voss and David Escamilla
June 20, 2020



Lacey Grant and Zachary Zimmermann
June 19, 2020



Brittany Beckmann and Bryant McFadden
June 6, 2020



Are you planning to be married? Perhaps you were married in a civil ceremony and would now like to be married under the eyes of our Lord? We would love to hear from you! Please contact DeeAnne Hamer, Wedding Coordinator, through the Parish Office at 272-367-0800 to begin preparations for the Sacrament of Marriage. Couples are asked to contact us at least six months prior to the wedding. Weddings at St. Charles may be held Friday evenings, Saturday mornings at 11 am, and Saturday afternoons at 2pm. Exceptions may only be made with the permission of the pastor.

CELEBRATING THE SACRAMENTS



Maryellen Gianna Taillie, daughter of Casey and Kathryn Taillie



Connelly James Nelson, son of Joshua and Mariah Nelson



Thomas Patrick Neubert, son of Eric and Sarah Neubert



Ainsley Therese Torhorst, daughter of Patrick and Rebecca Torhorst



Kathryn Lorraine Modrzynski, daughter of John and Margaret Modrzynski



Lucia Rose Maltby, daughter of Kurt and Jennifer Maltby



Charles Andrew Anello, son of Paul and Christine Anello



Cameron Rae Crivello, daughter of Salvatore and Rebecca Crivello



Wesley Matteo Wolf, son of Garrett and Nina Wolf

CELEBRATING THE SACRAMENTS



Levi David Johnston, son of Nathaniel and Kelsie Johnston



Aiden James Thomas, son of Andrew and Sarah Thomas



Viktor Lee Nylen, son of Paul and Jessica Nylen




Callen Scott Meccariello, son of Daniel and Megan Meccariello



Julie Rose Moen, daughter of Michael and Victoria Moen



Molly Elizabeth Ray, daughter of John and Katie Ray



Jesus was baptized and taught his Apostles to go and do likewise. Through baptism, we are freed from sin and reborn as sons and daughters of God! We become members of the Body of Christ as we are incorporated into the Church and made sharers in her mission.

We can't wait to welcome you (as an adult in our Becoming Fully Catholic process) or your child into the life of Christ and our Church through Baptism! Please contact the Parish Office at 262-367-0800 to begin the process with Jess Panlener.



Mass of Atonement

Also St. Charles will hand out the book "The Letter to a Suffering Church" during next weekend Masses, July 25th & 26th!

TUESDAY, JULY 28, 2020 • 5:30 P.M.

St Dominic Parish
18255 W Capitol Dr. | Brookfield, WI 53045

The Mass of Atonement will be open for limited, in-person attendance. Due to the COVID-19 health concerns, the Mass will be recorded, closed-captioned and made accessible through the Archdiocese of Milwaukee website for those unable to attend in-person. Please visit www.archmil.org for more information.

“

Please join me for our annual Mass of Atonement. This Mass is a faith-filled, heartfelt and visible action step as we continue our path of reconciliation and resolution.

While no single statement or event can make up for the painful abuse of our most vulnerable brothers and sisters, as believers we know that in Christ's suffering, death and resurrection, we find hope beyond measure as we move toward a brighter future. ”

- ARCHBISHOP JEROME E. LISTECKI



Steve & Joyce BERGELIN
 www.SteveandJoyceBergelin.com

REALTY EXECUTIVES
 INTEGRITY
 (262) 424-8753

TODD WANGERIN ELECTRIC, Inc.
 Free Estimates - Licensed - Insured
 Over 20 years experience
 Todd Wangerin 262-719-4411
 twelectric4411@att.net

BIEBEL'S True Value.
Hardware & Rental
HARTLAND
 580 Hartbrook Dr. • 369-1070

Oconomowoc Landscape Supply & Garden Center
 Landscaping Supplies • Annuals
 Perennials • Trees & Shrubs
 Increase your Homes Value Enjoy a Beautiful Landscaped Yard
262-567-1777
 www.olandscape.com • Corner of K & 67 at bypass

We Help You Travel Better!
262.646.8878
 TLJournays.com
 Parish Member
TRAVEL LEADERS

Complete line of Hispanic & American Groceries.
 We specialize in fresh corn tortillas, Mexican bakery and our famous El Rey Tostadita Chips.
Serving Milwaukee Since 1978
 El Rey Family Market 3200 W. Oklahoma Ave. 414-943-1940
 El Rey Plaza 3524 W. Burlington St. 414-943-1816
 El Rey Food Mart 1202 W. Burlington St. 414-388-7786

Holzauer, Hewett & Barta s.c.
Orthodontic Care For Children And Adults
 Daniel Holzauer DDS MS | Charles Hewett DDS MS | Joshua Barta DDS MS
 520 Hartbrook Dr., Hartland
 2316 N. Grandview Blvd, Waukesha
 10225 W. Capitol Dr., Wauwatosa
 262-567-7076
 262-547-6365
 414-463-5700

BUNZEL'S OLD FASHIONED MEAT MARKET
 Fresh Custom Cut Choice Meats
 Party Trays • Catering
 Thank You For Supporting A Family Tradition
 9015 W. BURLEIGH 873-7960
 www.bunzelmeats.com

Lake Country Financial Group LLC
 Steven R. Seibel, CLU, ChFC, LUTCF
 Financial Advisor
(262) 646-4115
 Securities offered only through Chicago Investments, Inc., a registered broker-dealer and member FINRA/SIPC. Lake Country Financial Group LLC and CoreCap are separate and unaffiliated entities. Advisory services offered through Chicago Advisors, Inc., a registered investment advisor.

FOOT & ANKLE Associates of Wisconsin
 Parish Member
 Dr. Amy Galati
 Call: (262) 542-3779
 www.footandanklewi.com

KOWAL INVESTMENT GROUP
 The Retirement Specialists
Aaron T. Kowal, CFP®
 W238N1660 Busse Rd., Ste. 100, Waukesha, WI 53188
 262-522-4040
 www.kowalinvestmentgroup.com
 Securities offered through Raymond James Financial Services Inc. Member FINRA and SIPC. Investment Advisory Services offered through Raymond James Financial Services Advisors, Inc. and Kowal Investment Group, LLC. Kowal Investment Group, LLC is not a registered broker-dealer and is independent of Raymond James Financial Services.

TOWN BANK
 A WINTRUST COMMUNITY BANK
800-433-3076
 www.townbank.us

EZ WINDOW CLEANING
www.e-zwindowcleaning.com
262-349-9411

Pat's Heating & Air Conditioning
262-567-7499
OCONOMOWOC
www.patsheating.com

RENEU HEALTH & MEDISPA
 Office of Dr. Jill Wohlfiel
 Complete Medispa Menu of Services
 W359 N 5002 Brown St., Suite 208
 Oconomowoc, WI 53066
 www.reneuhealth.com • 262-560-1920

catholicmatch Wisconsin
 CatholicMatch.com/WI

Hartland Family CHIROPRACTIC
 211 Cottonwood Ave, Hartland
 (262) 367-7424
 www.hartlandchiro.com

Elegant NAILS BAR
262-367-6688
 600 Hartbrook Dr., Hartland
RECEIVE 20% OFF OF \$30 OR MORE

WE'RE HIRING AD SALES EXECUTIVES
 • Full Time Position with Benefits
 • Sales Experience Preferred
 • Paid Training
 • Overnight Travel Required
 • Expense Reimbursement
 CONTACT US AT **careers@4LPI.com**
www.4LPI.com/careers

ADT-Monitored Home Security
 Get 24-Hour Protection From a Name You Can Trust
 • Burglary • Fire Safety • Flood Detection • Carbon Monoxide
 1-855-225-4251

Michael J. Finn S.C.
 ATTORNEY AT LAW
 PARISH MEMBER
262-367-8485
mjfinnc@sbcglobal.net
 163 E. Capitol Dr., Hartland, WI 53029

VISU-SEWER, INC.
262-695-2340
 Professional Sewer Inspection, Maintenance and Rehabilitation Services
 Parish Members
www.visu-sewer.com

BUDGET BLINDS of LAKE COUNTRY
262-309-6710

R&R INSURANCE
Rick Kalscheuer
 Parish Member
 800.566.7007 | MyKnowledgeBroker.com

Seven Seas on Nagawicka Lake
 Casual & Fine Dining
 Sunday Brunch
sevenseswi.com 262-367-3903

CHARLES St. Charles School
 St. Charles School... We choose Christ in learning, living, & values in the light of our faith.
262-367-2040
 www.stcharlesschoolhartland.com

JENSON MOTORS Auto - Truck Repair
 Hours: Mon-Fri 7:30-5:30
 Proprietor: Guy Jenson
262-367-5556
 364 Cottonwood Ave., Hartland, WI

DON CULL EXCAVATING
 W298 N9248 Center Oak Rd
 Septic & Mound Systems Grading
966-7038
 MPRS 221589

LAKE COUNTRY REAL ESTATE
Scott Heyerdahl
262-719-6970
 Sheyerdahl@firstwebber.com

Advanced Disposal
 •Residential •Commercial
 •Construction •Recycling •Roll Off Rentals
(262) 367-6040

Culver's
701 Industrial Ct., Hartland
262-367-5800

North Lake Family Dentistry
 Patty Erickson, D.D.S.
 W315N7641 Hwy 83, North Lake, WI
 Phone: 262.966.7668
www.nrlakefamilydentistry.com
 northlakefamilydentistry@gmail.com

Hartland Terrace Assisted Living
 • RN Lead 24-Hour Elite Care Team
 • Full Continuum of Care • Memory Care
 • All Inclusive Pricing • Private Studios
 • Family Centered Care Model
 327 North Avenue • Hartland | 262-369-4391
www.hartlandterrace.com

Henry & Diane Barvinski, Co-Owners
ECHO LAWN'S
 A Complete Lawn, Landscape, and Snow Removal Service
 Milwaukee Lake Country
414-462-6670 262-695-8152

PATRIOT PLUMBING, INC.
 COMMERCIAL AND RESIDENTIAL
www.patriotplumbingwi.com
Earl Cull • 262-966-2284
 MP221857 107112RT 107113RMT

HERITAGE LAKE COUNTRY
 We Can Help You with the Next Step!
 2975 Village Square Drive, Hartland, WI 53029
262-367-2975 • heritagesenior.com

KLINK'S KARPETS, INC
 Hartland's Floor Covering Center
 Family Owned & Operated for over 47 Years
 Carpeting & Hard Surfaces
 107 North Ave. Hartland, WI
367-4670 Parish Member

FOX BROS
 306 Oconomowoc
262-367-2922
 1700 DOWMAN ST
 Oconomowoc, WI
262-567-8376
 Open 7 days a week
 6am-9pm

HERITAGE LAKE COUNTRY
 Independent, Assisted Living and Memory Care Communities
 2975 Village Square Drive, Hartland, WI 53029
262-367-2975 • heritagesenior.com

SPRUNG ARMSTRONG AIR
 Heating, Sheet Metal & Well Pump Service
 7024 Main St., Merton
538-1400
 Service • Repair & New Construction
 Residential & Commercial
 Parish Members

Lake Country Eye Care
 580 Hartbrook Dr. • Hartland, WI 53029
 Amber A. Dentz, OD - Parishioner
www.lakecountryeyecare.com
262-367-6610

DAVE PERRY heating & cooling
 Proudly Serving the Lake Country Area for more than 20 years
 Heating • Air Conditioning • Geothermal
 New Construction • Replacement
262.966.1959
 www.daveperryheatingandcooling.com

Too Sick for Mass?
 SUPPORT OUR PARISH NO MATTER WHERE YOU ARE!
 Sign-up to get your bulletin delivered right to your inbox!
www.parishesonline.com

Generations DENTAL
 Jim Mautsberg, D.D.S. and Kelly Newman, D.D.S. Parish Members
 107 E. Capitol Dr. Hartland, WI 53029
 Office 262-369-2280
 General Dentistry • Root Canal • Crowns

Lake Country Eye Care
 580 Hartbrook Dr. • Hartland, WI 53029
 Amber A. Dentz, OD - Parishioner
www.lakecountryeyecare.com
262-367-6610

Generations DENTAL
 Jim Mautsberg, D.D.S. and Kelly Newman, D.D.S. Parish Members
 107 E. Capitol Dr. Hartland, WI 53029
 Office 262-369-2280
 General Dentistry • Root Canal • Crowns

Palmer's STEAKHOUSE
 www.Palmersteakhouse.com
 122 E. Capitol Dr. • Hartland, WI
 262-369-3939

Bob Hamilton
 207 E. CAPITOL DRIVE • HARTLAND, WI 53029
 262.367.2312
 BHAMILTO@amfam.com

EH
Emanuele & Haut, CPAs, SC
 Certified Public Accountants
 Parish Member
 262.367.1040
 sam@ehcpas.com

SUPPORT YOUR LOCAL PARISH.
 Buy a bulletin ad space today!

REICHL & KOLSTAD ORTHODONTICS
 Dr. Peter Reichl & Dr. James Kolstad
 look forward to meeting you!
 Offering Traditional Braces & Invisalign
 Located in Waukesha, Mukwonago & Hartland
262-547-2827
 www.ReichlKolstadOrtho.com

UnitedDrivingSchoolWI.com
ENROLL TODAY!

Wolf Electric LLC
 Commercial, Industrial, Residential
 Garrett Wolf • Master Electrician/Parishioner
 Commercial • Industrial • Residential
 (262) 224-7310 • www.wolfelectricllc.com

ADT-Monitored Home Security
 Get 24-Hour Protection From a Name You Can Trust

- Burglary
- Fire Safety
- Flood Detection
- Carbon Monoxide

1-855-225-4251

WEALTHSPIRE ADVISORS
Brion Collins
 CFP® Professional & Parishioner
 262.326.6090 | www.wealthspire.com

We salute the St. Charles community and all who make such a profound difference.

What Will Be Your Legacy?
 If you value your faith and your family, I welcome the opportunity to share my biblical perspective in union with my financial experience in order to co-create a personal legacy strategy. I can assist with: Portfolio Management | Retirement Planning | Financial & Legacy Strategies | Special Needs Planning

Kurt Maltby, CFP®, ChSNC®
 CERTIFIED FINANCIAL PLANNER™
 Associate Vice President, Financial Advisor
Morgan Stanley
 20975 Swenson Drive, Waukesha
 Phone: (262) 523-8303 | NMLS # 1504808
 advisor.morganstanley.com/the-riverwood-wealth-management-group

EVERETT LUKO FUNERAL HOME
 262-167-2150

PASSAGES
 Cremation Services
 262-167-2150

CARPET PLUS, INC.
 We Bring the Showroom to You!
 (414) 573-0105
 Dan Taylor, Parish Member

Pella Upgrade your home with beautiful styles

Replace now and give your home a fresh point of view

Pella Windows & Doors of Wisconsin has all the styles, finishes, and hardware to give your home a new look with upgraded energy efficiency. Whether you're interested in wood, fiberglass, or vinyl, Pella has the windows and doors to enhance your home, inside and out.

Visit PellaWI.com for our latest offers.

Mention this ad when you schedule your free, no-obligation consultation and at your appointment, receive a **free \$50 gift card*** good for dining, beverages, or theatre admission for the luxury Silverspot Cinemas at the Corners of Brookfield!

*Limit one per household, while quantities last.

Gina Della
 General Manager

Pella Pella Windows & Doors Of Wisconsin
 © 2020 Pella Corporation

Visit the Pella Windows & Doors of Wisconsin showroom nearest you:
 Brookfield - Green Bay - Madison - Appleton | PellaWI.com | 877.687.0657

H+p CERTIFIED PUBLIC ACCOUNTANTS
 Mark G. Hayes, CPA
 262-367-5505 • 262-367-0545 Fax
 365 Cottonwood Ave., Suite A • Hartland, WI 53029
 mark@hpcpa.tax • www.hpcpa.tax

Lisa Mihas Piano Studio
 formerly Lisa Sauer Piano Studio
 300 Cottonwood Avenue, Suite 1
 Hartland, WI 53029
 Lisa Mihas
 Instructor of Piano and Music Therapy
 414-322-5555
 pianopantsmihas@yahoo.com



payrollDATA
 1020 James Drive, Ste O
 Hartland, WI 53029
 262-563-5150
 www.payrolldata.com



SPORTS GRILL
 PIZZA • FRIDAY FISH FRY • SANDWICHES
 *\$5.00 OFF ANY 16" PIZZA
 *SUNDAY'S "KIDS EAT FREE" WITH ADULT PURCHASE
 We do Parties & Catering!
 Not valid with any other offers or coupons
369-0079
 300 COTTONWOOD • HARTLAND
 PARISH MEMBER

PAUN Construction
 Specializing in Masonry Residential & Commercial
 W300 N7741 Christine Ln., Hartland, WI 53029
 Robert J. Paun (262) 326-8043
 www.paunconstruction.com
 mail@paunconstruction.com

GOOD TIMES DAY CAMP
 262-521-8100 • WWW.GOODTIMESWI.COM

Where happiness and wonderment come to play!

- Now Enrolling Ages 3 - 15
- 15 Acres & 2 Heated Pools
- Six Athletic Fields
- Swimming Lessons Included
- Field Trips Included
- Bussing to/from Hartland
- Bussing to/from Brookfield
- Worry Free Scheduling
- Low Ratio's
- Accepting Counselor Applications

Where challenges are met, goals are accomplished, and friendships and memories made last a lifetime!

DUNN
 INVESTMENT MANAGEMENT GROUP
 of RBC Wealth Management
James P. Dunn
 Managing Director - Financial Advisor
 Senior Portfolio Manager - Portfolio Focus

18500 West Corporate Drive, Ste. 100
 Brookfield, WI 53045
 Call (262) 395-1101 for an appointment
 james.dunn@rbc.com

- Customized portfolio management & investment consulting for individuals & institutions
- Comprehensive investment advice & retirement planning
- Recently retired or changed jobs? Providing specialized 401K rollover solutions

A Division of RBC Capital Markets LLC NYSE/FINRA/SIPC

FREE AD DESIGN WITH PURCHASE OF THIS SPACE.
 - 800-950-9952 -

Please Support these **CONTRACTORS**

Thank You to these contractors helping St Charles grow!

NELCO ELECTRIC, INC.
 GERMANTOWN, WI
 Commercial • Industrial • Residential
 24 Hour Service 262-502-9950
 WWW.NELCOELECTRIC.COM
 Barb Jarchow Parishioner

zimmerman
 ARCHITECTURAL STUDIOS, INC.
 200 West Hill Village Avenue
 Milwaukee, WI 53221 | zimmerman.com
 TEL: (414) 438-9240
 FAX: (414) 438-9240

BUILDERS Hunginger
 SINCE 1907
 Kevin O'Toole, Parish Member
 Construction Manager General Contractors
 Brookfield, WI 262-797-0797

lifetime Door Co
 GARAGE DOORS • DOOR OPENERS • REPAIRED OR REPLACED
 SALES • SERVICE • INSTALLATION
262-567-9203

Vicki Marciniak
 When it comes to your home, it's more than just business, it's personal.
 Cell: (414) 243-5584
 vmarciniak@firstweber.com
 www.VickiMarciniak.FirstWeber.com

FRONTIER
 TITLE & CLOSING SERVICES, LLC
 1130 James Drive, Hartland, WI 53029
 Office: 262-361-4466 Fax: 262-361-4462
 www.frontiertitlellc.com
 Frontier Title & Closing Services, LLC
 Lake Country's Most Experienced Title & Closing Company
 Specializing in Residential, Commercial & New Construction Transactions
 Serving the Real Estate Community!