



*At St. Charles, all are invited to
meet Christ, know Christ,
love Christ and serve Christ.*

February 23, 2020

SEVENTH SUNDAY IN ORDINARY TIME

February 26th **Ash
Wednesday**

Father in Heaven,
Protect us in our struggle
against evil.

As we begin the discipline of
Lent,
make this season holy by our
self-denial.

Grant this through our Lord
Jesus Christ
who lives and reigns with you
and the Holy Spirit
one God, for ever and ever

Amen



313 Circle Drive, Hartland, WI 53029 • 262-367-0800
www.stcharleshartland.com • email: parish@stcharleshartland.com



WELCOME TO ST. CHARLES

PASTOR: Fr. Ken Omernick

ASSOCIATE PASTOR: Fr. Nick Baumgardner

nbaumgardner@stcharleshartland.org

PASTORAL ASSOCIATE: 262-367-6704

Elizabeth Thompson, ethompson@stcharleshartland.org

Celiac Contact: Rose Thomas: rctihm@yahoo.com or 630-915-6601

PARISH OFFICE: 262-367-0800, Fax: 262-367-6960

Hours: Mon. - Fri., 8:00am- 4:00pm

Assistant to the Pastor:

Terrie Carew, Ext. 202, tcarew@stcharleshartland.org

Parish Receptionists:

Debra Hertel, Ext. 226, dhertel@stcharleshartland.org

Joann Papa, Ext. 226, jpapa@stcharleshartland.org

Parish Administrative Assistants:

Kathy Gillstrom, Ext. 200, kgillstrom@stcharleshartland.org

Dee Anne Hamer, Ext. 200, dhamer@stcharleshartland.org

DIRECTOR OF ADMINISTRATIVE SERVICES:

Marge Beck, Ext. 201, mbeck@stcharleshartland.org

DIRECTOR OF OPERATIONS:

Mike Cattani, Ext. 229, mcattani@stcharleshartland.org

DIRECTOR OF MAINTENANCE:

Tim Orzechowski, Ext. 217, torzechowski@stcharleshartland.org

COMMUNICATIONS SPECIALIST & BULLETIN:

Renee Krier, Ext. 224, rkrier@stcharleshartland.org

PARISH SCHOOL: 262-367-2040, school@stcharleshartland.com

PRINCIPAL:

Dan Garvey, Ext. 208, dgarvey@stcharleshartland.org

School Administrative Assistants:

Lisa Moehrke & Karen Dejewski, Ext. 206

ADVANCEMENT OFFICER: 262-361-5000

Allison Caswell, acaswell@stcharleshartland.org

DEPARTMENT OF CHILDREN'S FORMATION: 262-367-3277

Director of Children's Formation (PS-5):

Alicia Van Hecke, Ext. 205, avanhecke@stcharleshartland.org

Administrative Assistant:

Trish Gilchrist, Ext. 230, tgilchrist@stcharleshartland.org

DEPARTMENT OF STUDENT & YOUNG ADULT MINISTRIES:

262-367-3277 Ext. 221 or lifeteen@stcharleshartland.org

Director of Student & Young Adult Ministries: Nick Scanlan

Associate Director (EDGE 6-8): Corrie Christiaansen

Administrative Assistant: Laura Zgrabik

DEPARTMENT OF LITURGICAL MUSIC:

Director of Liturgical Music & Children's Choir Director:

Scott Currier, Ext. 225, scurrier@stcharleshartland.org

Associate Musician:

Kathleen Latzke-Daley, Ext. 215, kldaley@stcharleshartland.org

Liturgical Music Assistant:

Maria Notch, Ext. 215, mnotch@stcharleshartland.org

Liturgical Administrative Assistant:

Gina Vogt, Ext. 215, gvogt@stcharleshartland.org

DIRECTOR OF ADULT & FAMILY MINISTRY:

Nancy Neuser, Ext. 210, nneuser@stcharleshartland.org

DIRECTOR OF STEWARDSHIP:

Nancy Van De Laarschot, Ext. 214,

nvandelaarschot@stcharleshartland.org

DIRECTOR OF DISCIPLESHIP:

Jess Panlener, Ext. 212, jpanlener@stcharleshartland.org

Eucharistic Celebrations

Saturday Mass of Anticipation: 5:00pm

Sunday Mass Times: 7:00am, 9:00am, 11:00am & 6:00pm

Communion Service: Monday ~ Friday: 6:30am

Weekday Mass:

Monday ~ Saturday: 8:30am

Sacrament of the Sick

The Anointing Mass is the second and fourth Friday at 8:30am or by appointment with Fr. Ken or Fr. Nick (scheduled with the Parish Office).

Morning Prayer: Monday ~ Friday: 7:30am, Saturday: 8:00am

Rosary: Monday ~ Friday: 8:00am, Tuesday Evening: 7:30pm

Perpetual Help Devotions: Tuesday after 8:30am Mass

Eucharistic Adoration

Mondays: 5:00-7:00pm with closing prayer (includes music)

Tuesdays: 6:30-8:00pm with 7:30pm Rosary and closing prayer

Fridays: 9:00am-3:00pm with the Divine Mercy Chaplet at 3:00pm followed by Benediction

Reconciliation

Saturday: 3:30pm - 4:30pm & Thursday: 5:00pm - 6:00pm

or by appointment (scheduled with the Parish Office)

Join our Parish

All Catholics are welcome to join our Parish and are asked to register on New Parishioner weekend, the first weekend of the month, or stop in at the Parish Office during office hours.

Planning to be Married?

Congratulations! Please notify St. Charles at least six months in advance. Weddings may be celebrated on Friday evenings and Saturdays at 11:00am and 2:00pm. Exceptions are made only with the permission of the Pastor. **Please contact Dee Anne Hamer at 262-367-0800 Ext. 222.**

Are you expecting or adopting a child?

St. Charles is honored to serve parents seeking Baptism for their child(ren). To find out more information about our preparation process and to schedule infant/child Baptisms, **please contact the Parish Office at 262-367-0800.**

Becoming FULLY Catholic

Are you unbaptized or baptized in a different Christian faith and considering becoming Catholic? Are you a baptized Catholic who did not receive the Sacraments of Reconciliation, Eucharist and/or Confirmation? St. Charles provides an adult formation process that will help you discover Jesus and His Holy Catholic Church. **Please contact Jess Panlener at 262-367-0800 Ext. 212.**

Small Groups

The Small Group movement at St. Charles offers you a way to authentically seek Jesus in small faith sharing communities. Small Groups gather in members' homes throughout Lake Country during Fall and Lent. For more information, **please contact Jess Panlener at 262-367-0800 Ext. 212.**

OUTREACH SERVICES TEAM: Terri Blazek: 262-367-7608,

jtblazek@wi.rr.com

Prayer Network: prayernetwork@stcharleshartland.org

St. Vincent De Paul: 262-367-0800 (Parish Office)

Need Home Communion: 262-367-0800 (Parish Office)

Mass Intentions for
the Week of February 23rd



Sunday, February 23

- 7:00 am † Doris Sprung
- 9:00 am Living and Deceased Members of St. Charles
- 11:00 am † Ronald Eibly
- 6:00 pm † Pam Farley

Monday, February 24

- 8:30 am Special Intention

Tuesday, February 25

- 8:30 am † Frances LeBlanc

Wednesday, February 26 ~ Ash Wednesday

- 6:30 am † Frank O'Hara
- 8:30 am Living and Deceased Members of St. Charles
- 6:00pm Living and Deceased Members of the Berg Family

Thursday, February 27

- 6:30 am † Mark Wisniewski
- 8:30 am † Mary Catherine Mazza

Friday, February 28

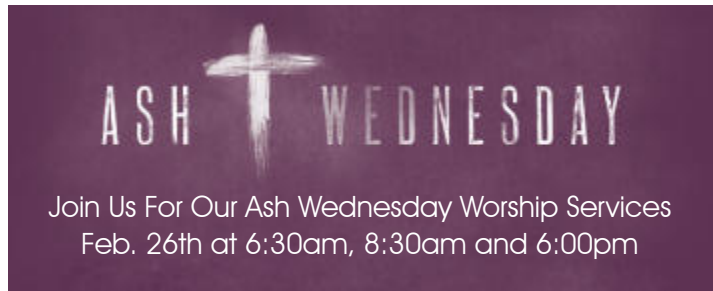
- 6:30 am Living and Deceased Members of the Wenstrom & Marzo Families
- 8:30 am † Gerry Smith

Saturday, February 29

- 8:30 am Special Intention
- 5:00 pm † Thomas C. Nolasco Jr, M.D.

Sunday, March 1

- 7:00 am † Conrad Kollross and Dawn Kollross-Bobot
- 9:00 am † Christopher (Christy) McCarthy
- 11:00 am Living and Deceased Members of St. Charles
- 6:00 pm † Dan Murphy



Bulletin Advertisers of the Week
Please support our advertisers!

Lifetime Door Co
GARAGE DOORS • DOOR OPENERS • REPAIRED OR REPLACED
SALES • SERVICE • INSTALLATION
262-567-9203

Abbreviation Key

- BR = Borromeo Room
- CH = Church
- CHPL = Chapel
- CR = Conference Room
- HFRC = Holy Family Rec Center
- IMC = Instructional Media Center
- LTC = Life Teen Cafe (Student Lounge)
- MD = Music Dept
- MR = Music Room (School)
- PH = Parish Hall
- PO = Parish Office
- SK = Staff Kitchen
- SR = Science Room
- TL = Teachers' Lounge
- CGS = Catechesis of the Good Shepherd

Sunday, February 23

- Confirmation Retreat, Offsite, All Day
- CGS Session I-A (Gr. 3K-5K), Atrium, 8:45am
- "Little Lambs" Childcare, 3K Classroom, 9:00am & 11:00am Masses
- CGS Session I-B (Gr. 3K-5K), Atrium, 10:45am
- Child Formation Classes (Grades 1 & 3-5), Classrooms, 10:45am
- Spring Musical Rehearsal, MR, 5:00pm
- Rite of Welcome, CH, During 6:00pm Mass

Monday, February 24

- After School Care, PH, 3:30pm
- Lake Country Children's Choir Rehearsal, MR, 6:00pm
- EDGE: Middle School Ministry, BR/LTC/PH/CH, 6:30pm

Tuesday, February 25

- Tuesday Breakfast Club, BR, 9:30am
- St. Vincent de Paul Food Pantry Open, Lawn Street, 10:00am-Noon
- St. Vincent de Paul Meeting, CHPL, 12:30pm
- After School Care, PH, 3:30pm
- Spring Musical Rehearsal, MR, 3:30pm
- SVdP Food Pantry Open, Lawn Street, 5:30pm-7:00pm
- Mardi Gras Event, BR, 5:30pm
- Technology Commission Meeting, SR, 6:30pm
- Burning of Palms Ceremony, Front Porch, 8:10pm

Wednesday, February 26 ~ Ash Wednesday

- Ash Wednesday Mass, CH, 6:30am
- Ash Wednesday All School Mass, CH, 8:30am
- After School Care, PH, 3:30pm
- Children's Choir Rehearsal, CH, 3:30pm
- Ash Wednesday Mass, CH, 6:00pm
- Ash Wednesday Soup Supper, BR, 7:00pm

Thursday, February 27

- Men's Morning Group, BR, 5:30am
- Staff Meeting, BR, 10:00am
- After School Care, PH, 3:30pm
- Spring Musical Rehearsal, MR, 3:30pm
- Bread of Life Community Meal, BR, 5:30pm
- Boy Scout Troop Meeting, PH, 6:30pm
- Finance Council Meeting, IMC, 6:30pm
- Emmaus (High School Small Group), LTC, 6:30pm

Friday, February 28 ~ No School

- Teacher Inservice, BR, IMC, STEM Lab, Classrooms, 8:00am - 3:00pm
- Anointing of the Sick within Mass, CH, 8:30am
- Morning Mom's Group, LTC, 10:00am
- Lenten Fish Fry, BR/PH, 4:00pm
- Baptism Mentor Couple's Night Out, LTC, 5:30pm
- Stations of the Cross, CH, 7:00pm

Saturday, February 29

- Winter Workshop for Cantors, CH, 9:30am-11:30am
- New Parishioner Registration, PO, After 5:00pm Mass

Sunday, March 1

- Doughnut Sunday, BR, After Morning Masses
- SHARE Sunday, Narthex, All Day
- New Parishioner Registration, PO, after all Masses
- CGS Session I-A (Gr. 3K-5K), Atrium, 8:45am
- "Little Lambs" Childcare, 3K Classroom, 9:00am & 11:00am Masses
- Rite of Sending, CH, During 9:00am Mass
- Becoming FULLY Catholic, Music Room, 10:15am
- Lent Reconciliation for Child Formation Gr. 3, Classroom, 10:45am
- CGS Session I-B (Gr. 3K-5K), Atrium, 10:45am
- Child Formation Classes (Grades 1 & 3-5), Classrooms, 10:45am
- Rite of Election, Cathedral of St. John the Evangelist (MLW), 1:30pm
- Spring Musical Rehearsal, MR, 3:30pm
- "Screenagers" Part 2 Film Screening, BR, 7:00pm
- Life Teen Life Night, LTC, 7:15pm



Spend 15 minutes every day in prayer with Scripture!



- We live in a fallen world, and all fall short of the glory of God. What am I sacrificing this Lent to offer reparations for sin, that hurts God and my world? How can I challenge myself to go further this Lent? What practices can I add to draw nearer to Jesus, who died for me?
- Jesus has the scriptures written on his heart. When I read the Bible, do I try my best to commit it to memory? We can only do what we know – do I know the Word?

Readings for the Week of February 23rd

Sunday: Lv 19:1-2, 17-18/Ps 103:1-2, 3-4, 8, 10, 12-13 [8a]/ 1 Cor 3:16-23/Mt 5:38-48
Monday: Jas 3:13-18/Ps 19:8, 9, 10, 15 [9a]/Mk 9:14-29
 Tuesday: Jas 4:1-10/Ps 55:7-8, 9-10a, 10b-11a, 23 [23a]/ Mk 9:30-37
Wednesday: Jl 2:12-18/Ps 51:3-4, 5-6ab, 12-13, 14 and 17 [cf. 3a]/2 Cor 5:20—6:2/Mt 6:1-6, 16-18
Thursday: Dt 30:15-20/Ps 1:1-2, 3, 4 and 6 [Ps 40:5a]/Lk 9:22-25
Friday: Is 58:1-9a/Ps 51:3-4, 5-6ab, 18-19 [19b]/Mt 9:14-15
Saturday: Is 58:9b-14/Ps 86:1-2, 3-4, 5-6 [11ab]/Lk 5:27-32
Next Sunday: Gn 2:7-9; 3:1-7/Ps 51:3-4, 5-6, 12-13, 17 [cf. 3a]/ Rom 5:12-19 or 5:12, 17-19/Mt 4:1-11

READ. REFLECT. RESPOND. REST.



Cutout and keep in your bible for reference!



Catholic Leadership INSTITUTE

An invitation from Fr. Ken Omernick

Parish to participate in Disciple Maker Index Survey

As the pastor of St Charles, my primary responsibility is to help you grow as disciples of Jesus and to equip you to go and make disciples of others. I am excited to share with you that our parish is participating in a parish survey conducted by Catholic Leadership Institute called **The Disciple Maker Index (DMI) Survey**. This survey allows parishioners to reflect on their own spiritual growth and discipleship and identify the ways in which the parish effectively supports that growth.


The web-based survey will be accessible online for one month, starting this weekend Feb. 23 and ending March 23. The survey link is on our website (click on slide to go to survey) or you may enter www.disciplemakerindex.com in your internet browser. For those who do not have access to a computer or prefer, the survey will be available in paper form on the parish information wall and return it to the Parish Office. In addition, at an upcoming weekend, we will have a bank of computers, and available assistance if needed, for you to complete the 10-15 minute survey.

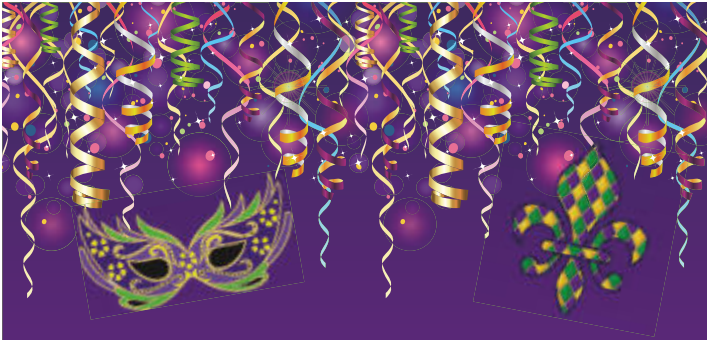
At the completion of the survey, our parish will receive an aggregate report of the results. We will NOT have access to individual survey responses. This survey offers us a unique and important opportunity to learn about issues of importance to families in a private and professional way. Parish leadership will use these results to 1) look at opportunities to support parishioner growth in discipleship and 2) create goals and action plans to achieve that growth. These results are especially important to us at St. Charles as we look at the programming opportunities for our parish.

Your input is important so I encourage everyone to participate! If you have any questions, feel free to ask any St. Charles staff member or contact the Parish Office at 262-367-0800.

Thank you in advance for taking the time to complete this survey.

Yours in Christ,
Fr. Ken Omernick

 <p>PARISH SUPPORT FOR THE WEEKEND OF JANUARY 12TH</p>	2019-2020	2018-2019
	Envelopes..... \$34,067.00 Offertory..... \$1,622.07 Weekend Total \$35,689.07 YTD \$1,118,315.83	Envelopes..... \$30,135.50 Offertory..... \$2,205.31 Weekend Total \$32,340.81 YTD \$1,128,923.22



Bring Out Your Mardi Gras Beads...

All ages are invited to a family-friendly evening of fun, food and festivities and it's **FREE!**

What: St. Charles' Mardi Gras Celebration!
When: "FAT" Tuesday, Feb. 25th
5:30 pm to 8:00 pm
Where: Borromeo Room at St. Charles

Event Includes: Potluck Supper, Crafts, Masks, Costume Judging, Crowning the King & Queen, Games, DJ, Candy & Bead Throwing and Face Painting

Potluck: Bring a dish in a disposable container to share with fellow party goers! Dessert is already provided (Paczki and King Cake!) Optional: Wear your royal attire or Halloween costumes!

NO REGISTRATION required – JUST SHOW UP!
Questions, ideas or to help - call or email
Nancy Neuser at nneuser@stcharleshartland.org

This is an alcohol free family event!

MARDI GRAS *Helpers*

Help ... And Have FUN Too!
(Even an hour or so is helpful)

Setup (Monday, Feb. 24 - 1 to 5 pm)
Setup (Tuesday, Feb. 25 - 9:30 am to 1 pm)
Help at the event (Tuesday, Feb. 25 - 5:30 pm to end)
Service hours available for 4th grade through adult.

For more information or to sign-up contact Nancy Neuser at nneuser@stcharleshartland.org.

Please Bring In Last Year's Palms Now until February 23rd!

Traditionally the dried palms from the previous year's Palm Sunday celebrations are burned to make the ashes we are marked with on Ash Wednesday. We will collect palms beginning now through **Sunday, Feb. 23rd**. Please bring your old palms and place them in the baskets in the Narthex. Thank you!

+ Ash Wednesday

Ash Wednesday Soup Supper

Parish and school staff members look forward to serving parishioners during our annual Ash Wednesday Soup Supper on Wednesday, February 26th after the 6 pm Mass.

Our meal will be a light vegetarian soup and homemade bread. Registration is required so that we know how much soup and bread to prepare. All you need to bring is your fellowship. We will provide the bowls and the spoons! Please sign up on the sign-up shelf if you are attending. We look forward to seeing you!

February 28th & March 6th, 13th and 20th



St. Charles Parish

Fish Fry

Fridays · 4:00 - 7:00 pm

All-U-Can-Eat Fish Dinner - \$12

Also Available:

Grilled Cheese or Creamy Tomato Bisque Soup - \$5

Baked or Fried Cod and choice of French Fries or Potato Pancakes.
The meal also includes coleslaw, rye bread and a cookie.
Beer, wine and soda will also be available for purchase.

Carryouts are available from 4:00 - 7:00 pm

All are Welcome to Enjoy Great Food & Fellowship!

ST. VINCENT de PAUL SOCIETY



FOOD PANTRY NEEDS: cooking oil, diced tomatoes, brown sugar, brownie mix, deodorant, gift cards to Sentry, Piggly Wiggly, Pick-n-Save and Aldi's.

Next Sunday is SHARE SUNDAY! This is the monthly collection for our SVdP food pantry. We will also be accepting items from your participation in the Knights of Columbus' program to help our SVdP food pantry: 40 ITEMS OR 40 DOLLARS FOR LENT COLLECTION. Please indicate the K of C collection on your envelope if you choose to help financially. If you are donating 40 items, we appreciate all donations but we are overstocked with canned vegetables and soups. We are also not able to use expired food.

The food pantry is open Tuesday mornings between 10 AM and noon. It is also open on the second and fourth Tuesday evening of each month between 5:30 PM and 7 PM. It is located at 229 Lawn Street, Hartland. If you need other assistance, please contact SVdP at 262-367-0800. We can also be reached at that number if you are interested in joining our ministry of service to the needy.

The pantry will close when Arrowhead Schools close for inclement weather. It will reopen the following Tuesday, weather permitting.



Lake Country Bread of Life
Community Meals
at St. Charles

St. Charles Parish is the home for the Lake Country Bread of Life Community Meal. What began as a meal for the needy in our area has turned into a host program that includes seniors and others in need of a good meal and friendship. If you or someone you know could use some fellowship and a good healthy meal, please invite them to join us **Thursday, Feb. 27th at 5:30pm in the Borromeo Room.** Meals are prepared on the 4th Thursday of every month and the 3rd Thursday in November & December by area churches and organizations and served at St. Charles. We also offer blood pressure readings before the meal. **The meal will be hosted by the St. Charles Parish School Teachers.**

St. Charles Outreach Services Team oversees the event. If you would like to volunteer or have questions please contact the Parish Office or humanconcerns@stcharleshartland.org.



Our next Fall Fest meeting is March 17th at 6:30 pm in the School Music Room (#216). All are welcome to attend.



Catholic Relief Services
Operation Rice Bowl
Lent 2020

As part of our faith community's Lenten observance, we will participate in Catholic Relief Services' **Operation Rice Bowl**. Since 1975, Operation Rice Bowl has inspired Catholics in the United States to **pray, fast, learn and give** as we increase our understanding of our global community and connect that with the principles of Catholic Social Teaching throughout our Lenten journey. We encourage you to participate in Operation Rice Bowl at home with your family. Please know that 75% of your Operation Rice Bowl contributions will be sent to Catholic Relief Services and the other 25% will go to our own St. Vincent de Paul Society to help the local poor.

Operation Rice Bowl begins at St. Charles on Ash Wednesday and ends on Holy Thursday. **Rice Bowls will be stapled in next weekend's bulletin and will be on the parish information wall.** Instead of putting your pocket change into the family penny jar, please consider giving it this Lent to other families who need your help. Thank you for your support of this program!



February 21st

(Held on the 3rd Friday of the month)

6:30-7:30 pm Holy Hour

Open Gym & Refreshments to Follow

All families are welcome to join us to **ADORE** Jesus in the Blessed Sacrament at St. Charles Parish. There is worship music and a short teaching for both children and parents. Adoration is followed by open gym and refreshments.

Children of **ALL AGES**, birth on up are **very welcome**. This will be geared at families with young children and elementary school aged children, but anyone is most welcome to join us.



News & Events at
St. Charles Parish School

No School: There will be no school on Friday, February 28 for Teacher In-service.

Screenagers: We will be hosting a film screening of Screenagers: Next Chapter (Part 2) on Sunday, March 1 at 7 p.m. in the Borromeo Room. If you are interested in attending this showing, please RSVP on the school's website under the News section.

Used Book Sale: St. Charles will be having a book sale! Please donate your loved and gently-used children's books for our sale. You can drop off your books in the school office anytime between now and March 30. The sale will be open to students during the school day on April 1, and all books will be only fifty cents!

Peter Pan Jr. Musical: Save the date for Peter Pan Jr., our spring musical! Our students have been busy rehearsing and are excited to bring it to the stage on April 4 and 5. Mark your calendars — you don't want to miss the show!

SCRIP: Has your family earned \$100 in profits yet through the SCRIP program? Full-time school families are required to earn \$100 by May 31. It's easy to buy here at St. Charles and benefits the school. Order forms can be found online on the school website and turned in to either the School or Parish Office.

Annual Development Fund: Are you interested in supporting the Annual Development Fund at St. Charles? We would love your help! The ADF helps bridge the gap between the actual cost to educate a child at St. Charles School and the current tuition. If you are able to donate to the Annual Development Fund, you can either send a check to St. Charles or click "Donate" at the top of the school's website. We are halfway to our goal and are so grateful for your support!



St. Charles Night at
Culver's in Hartland

Monday, March 9th from 5:00-8:00 pm

Mention that you are with St. Charles and the School receives 10% of that evening's sales! Thanks for your support!



St. Charles
Jesus & Me

St. Bernadette – Princess of Lourdes!

"Fantasy Flight" to Lourdes, France held on Feb. 5th!



PREPARING FOR LENT

Questions and Answers about Lent and Lenten Practices

Q. Why do we say that there are forty days of Lent? When you count all the days from Ash Wednesday through Holy Saturday, there are 46.

A. It might be more accurate to say that there is the "forty day fast within Lent." Historically, Lent has varied from a week to three weeks to the present configuration of 46 days. The forty day fast, however, has been more stable. The Sundays of Lent are certainly part of the Time of Lent, but they are not prescribed days of fast and abstinence.

Q. So does that mean that when we give something up for Lent, such as candy, we can have it on Sundays?

A. Apart from the prescribed days of fast and abstinence on Ash Wednesday and Good Friday, and the days of abstinence every Friday of Lent, Catholics have traditionally chosen additional penitential practices for the whole Time of Lent. These practices are disciplinary in nature and often more effective if they are continuous, i.e., kept on Sundays as well. That being said, such practices are not regulated by the Church, but by individual conscience.

Q. I understand that all the Fridays of Lent are days of abstinence from meat, but I'm not sure what is classified as meat. Does meat include chicken and dairy products?

A. Abstinence laws consider that meat comes only from animals such as chickens, cows, sheep or pigs - all of which live on land. Birds are also considered meat. Abstinence does not include meat juices and liquid foods made from meat. Thus, such foods as chicken broth, consomme, soups cooked or flavored with meat, meat gravies or sauces, as well as seasonings or condiments made from animal fat are technically not forbidden. However, moral theologians have traditionally taught that we should abstain from all animal-derived products (except foods such as gelatin, butter, cheese and eggs, which do not have any meat taste). Fish are a different category of animal. Salt and freshwater species of fish, amphibians, reptiles, (cold-blooded animals) and shellfish are permitted.

Q. I've noticed that restaurants and grocery stores advertise specials on expensive types of fish and seafood on Fridays during Lent. Some of my Catholic friends take advantage of these deals, but somehow I don't feel right treating myself to the lobster special on Fridays during Lent.

A. While fish, lobster and other shellfish are not considered meat and can be consumed on days of abstinence, indulging in the lavish buffet at your favorite seafood place sort of misses the point. Abstaining from meat and other indulgences during Lent is a penitential practice. On the Fridays of Lent, we remember the sacrifice of Christ on Good Friday and unite ourselves with that sacrifice through abstinence and prayer.

Q. I understand that Catholics ages 18 to 59 should fast on Ash Wednesday and on Good Friday, but what exactly are the rules for these fasts?

A. Fasting on these days means we can have only one full, meatless meal. Some food can be taken at the other regular meal times if necessary, but combined they should be less than a full meal. Liquids are allowed at any time, but no solid food should be consumed between meals.

Q. Are there exemptions other than for age from the requirement to fast on Ash Wednesday and Good Friday?

A. Those that are excused from fast and abstinence outside the age limits include the physically or mentally ill including individuals suffering from chronic illnesses such as diabetes. Also excluded are pregnant or nursing women. In all cases, common sense should prevail, and ill persons should not further jeopardize their health by fasting.

Taken from the United States Conference of Catholic Bishops website

For more information on LENT please visit www.usccb.org/prayer-and-worship/liturgical-year/lent/index.cfm

ST. CHARLES PARISH LENTEN MISSION WITH FATHER ERIC STERNBERG



*Do you believe God is good? Am I good?
What is goodness? Do I deserve God's goodness?*

**Monday, March 2
Tuesday, March 3*
Wednesday, March 4
6-8 pm each night in the Church**

Adoration • Spiritual Renewal • Music

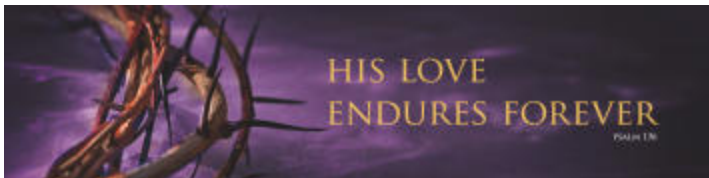
**An opportunity for individual Reconciliation on March 3rd*

Father Eric Sternberg will explore the question of how God is Good, as well as show us how Goodness applies to our daily life.

St. Valentine's Married Couples Night Out
Saturday, Feb. 8, 2020



Christian Women
Appetizer Pot Luck
held on February 12th



MEN OF CHRIST
LIVE YOUR FAITH BOLDLY

14th Annual Men of Christ Conference

Saturday, March 14
Miller High Life Theater, Milwaukee

Live Truth. Defend Truth

We are summoned to a renewed conversion to Jesus Christ, which we will accomplish through authentic friendship with God, and with one another. Join us on this journey, and bring your sons.

EARLY TICKET DISCOUNT PRICING

<https://menofchrist.net>

use promo code: STCHAZ

Adult: \$42 | Students: \$25 | Religious: FREE

Questions? Our St. Charles Contact is Tom O'Brien,
 262-825-2330 or tobrien@MenofChrist.net

Join us for the
Young Men of Christ Conference

Friday, March 13 beginning 6:00 pm
at Miller High Life Theater, Milwaukee

For Men 18-40 Seeking To Further Their Faith Among
 Like-Minded Men

Serve Your True Purpose

John Edwards:

Reclaim your identity in order to serve your true purpose.

John Edwards tells a remarkable reversion story after hitting rock bottom. Today, as the Leader Support Specialist for Cardinal Studios, he helps husbands, fathers and sons be the men they are called to be.

\$15 if registered by Saturday March 7.

\$20 after March 7 or at the door.

FREE with purchase of Men of Christ Saturday ticket.

Questions? Our St. Charles Contact is Tom O'Brien,
 262-825-2330 or tobrien@MenofChrist.net

CAMP DE SALES

SUMMER 2020


HIGH SCHOOL
 High School Vocation Camp: June 21-24
 High School Silent Retreat, April 3-5,
 Mt Tabor Center, Menasha WI

MIDDLE SCHOOL
 Vocation Day Camps | June 20, July 23, and August 4

MARK YOUR CALENDAR!
 Ordination to the Priesthood May 16

For additional events and to register, visit www.thinkpriest.org
 or call the Vocation office at 414-747-6437.

ARCHDIOCESE of MILWAUKEE VOCATION OFFICE



WOMEN'S CARE CENTER PRESENTS
 A COMPLIMENTARY LADIES' EVENT FEATURING
 SPIRITUAL MOTIVATOR, AUTHOR & SPEAKER
JUDY HEHR

"It's never too late to be who God has called you to be..."

prepare your heart for
Lent

OCONOMOWOC LAKE CLUB
TUESDAY, FEBRUARY 25TH
SESSION 1 - 12:30 - 2:30PM
SESSION 2 - 6:30 - 8:30PM
 - Your choice of session
 - Light refreshments served
 - RSVP appreciated but not required to:
sarah@wccmil.com

JUDY HEHR *simply cannot be described, she must be experienced! She will remind you of the love and passion that God has for all of us through her life experiences and dynamic speaking style.*

WOMEN'S CARE CENTER *helps pregnant women from our communities choose life for their babies, have healthier pregnancies, become better parents, and take first steps to self-sufficiency.*

SAVE THE DATE!

Monday, March 16th, 2020

Mental Health Night with NAMI Waukesha

Join us to talk and become educated about mental health and suicide. Learn how you can recognize a mental health emergency and how to get a person, at risk of suicide, the help they need. Attendees will learn three simple steps needed to know to help prevent suicide using QPR (Question, Persuade, Refer) and get to hear from people with lived experience about suicide.

6:00pm - 8:00pm
 St. Mary Parish, Waukesha
 Community Room

QPR INSTITUTE

CATHOLIC COMMUNITY of WAUKESHA
 Local and national resources to help will be available. Free to attend and anyone is welcome!

SAVE THE DATE!

SATURDAY, JUNE 27, 2020

Woman touched by God, authentic reflection of Mary
 Mujer inspirada por Dios, reflejo auténtico de Maria

8AM - 5PM
 Schoenstatt Retreat Center
 W284 N698 Cherry Lane
 Waukesha, WI 53188
 For more information call: 262-522-4322
 Email: schmotherswis@gmail.com

100th Anniversary Celebration
 of Women in Schoenstatt
 \$40.00 per person

The Catholic Study Club

Women belonging to any Catholic parish in Waukesha County are invited to the next Catholic Study Club luncheon. Our next luncheon will be local on Tuesday, March 10th at a Waukesha restaurant. Following the luncheon Deb Reuland, Franciscan Peacemakers, Board Member will speaker on "In Our Backyard – Human Trafficking." **Reservations are required and due by Sunday, March 2nd.** Please call Rita Keber at 262-547-4827 to reserve your spot.

TODD WANGERIN ELECTRIC, Inc.

Free Estimates - Licensed - Insured
Over 20 years experience

Todd Wangerin 262-719-4411
twelectric4411@att.net

Falbo Bros. Pizzeria

Small Business Specials & Catering
\$5.00 lunch special - 2 slices and a soda
Extensive Delivery Range

418 Merton Ave., Hartland 262-367-2700

Alan Giuffre, S.C. CERTIFIED PUBLIC ACCOUNTANT

Alan Giuffre, CPA, PFS • (say "JU-FRAY")
E-mail: alan@alangiufrasc.com
Website: www.alangiufrasc.com

262.367.4TAX (4829) FAX 262.367.9098
3945 HICKORY KNOLL RD
HARTLAND, WI 53029-9362

BIEBEL'S True Value.

Hardware & Rental

HARTLAND
580 Hartbrook Dr. • 369-1070

Oconomowoc Landscape Supply & Garden Center

Landscape Supplies • Annuals
Perennials • Trees & Shrubs
Increase your Homes Value Enjoy a Beautiful Landscaped Yard

262-567-1777
www.olandscape.com • Corner of K & 67 at bypass

We Help You Travel Better!

262.646.8878
TLJournays.com

TRAVEL LEADERS®

Complete line of Hispanic & American Groceries.
We specialize in fresh corn tortillas, Mexican bakery and our famous El Rey Tostadita Chips.

Serving Milwaukee Since 1978

El Rey 916 S. Cass E. Chicago Dr. Milw. WI 53204 414-943-1640	El Rey Family Market 3200 W. Oklahoma Ave. Milw. WI 53219 414-541-5200	El Rey Plaza 3524 W. Sherman St. Milw. WI 53215 414-643-1816	El Rey Food Mart 1527 W. Sherman St. Milw. WI 53204 414-383-7786
--	---	---	---

Holzauer, Hewett & Barta s.c.

Orthodontic Care For Children And Adults

Daniel Holzauer DDS MS | Charles Hewett DDS MS | Joshua Barta DDS MS

520 Hartbrook Dr., Hartland 262-567-7076
2516 N. Grandview Blvd, Waukesha 262-547-6365
10225 W. Capitol Dr., Wauwatosa 414-463-5700

BUNZEL'S OLD FASHIONED MEAT MARKET

Fresh Custom Cut Choice Meats
Party Trays • Catering

Thank You For Supporting A Family Tradition
9015 W. BURLEIGH 873-7960
www.bunzelmeats.com

Lake Country Financial Group LLC

Steven R. Seibel, CLU, ChFC, LUTCF
Financial Advisor
(262) 646-4115

Securities offered via SIPC through Citigroup Investments, Inc., a registered broker-dealer and member FINRA/SIPC. Lake Country Financial Group LLC and Citigroup are separate and unaffiliated entities. Advisory services offered through Citigroup Advisors, Inc., a registered investment advisor.

FOOT & ANKLE Associates of Wisconsin

Parish Member
Dr. Amy Galati

Call: (262) 542-3779
www.footandanklewi.com

catholicmatch® Wisconsin

CatholicMatch.com/WI

KOWAL INVESTMENT GROUP

The Retirement Specialists

Aaron T. Kowal, CFP®

Securities offered through Raymond James Financial Services Inc. Member FINRA and SIPC. Investment Advisory Services offered through Raymond James Financial Services Advisors, Inc. and Kowal Investment Group, LLC. Kowal Investment Group, LLC is not a registered broker/dealer and is independent of Raymond James Financial Services.

EZ WINDOW CLEANING

www.e-zwindowcleaning.com
262-349-9411

Pat's Heating & Air Conditioning

262-567-7499
OCONOMOWOC
www.patsheating.com

RENEU HEALTH & MEDSPA

Office of Dr. Jill Wohlfeil
Complete Medispa Menu of Services
W359 N 5002 Brown St., Suite 208
Oconomowoc, WI 53066
www.reneuhealth.com • 262-560-1920

TOWN BANK

AWINTRUST COMMUNITY BANK

800-433-3076
www.townbank.us

Hartland Family CHIROPRACTIC

211 Cottonwood Ave, Hartland
(262) 367-7424
www.hartlandchiro.com

Elegant NAILS BAR

262-367-6688
600 Hartbrook Dr., Hartland
RECEIVE 20% OFF OF \$30 OR MORE

WE'RE HIRING AD SALES EXECUTIVES

- Full Time Position with Benefits
- Sales Experience Preferred
- Paid Training
- Overnight Travel Required
- Expense Reimbursement

CONTACT US AT
careers@4LPI.com
www.4LPI.com/careers

Hartland Village Mart

301 E. Capitol Drive • Hartland

CITGO

- Fresh Bakery Daily
- Pizza • Sandwiches
- Groceries/Propane
- Beer and Beverages

Fast & Friendly Open Daily 5 a.m.-10 p.m.
Call Ahead 367-8099

Hartland Family CHIROPRACTIC

211 Cottonwood Ave, Hartland
(262) 367-7424
www.hartlandchiro.com

Home Security Team

HELP PROTECT YOUR FAMILY CALL NOW! 1-888-891-6806

ADT AUTHORIZED DEALER

HOME SECURITY TEAM

VISU-SEWER, INC.

262-695-2340

Professional Sewer Inspection, Maintenance and Rehabilitation Services

Parish Members
www.visu-sewer.com

DON CULL EXCAVATING

W298 N9248 Center Oak Rd
Septic & Mound Systems Grading
966-7038
MPRS 221589

R&R Rick Kalscheuer Parish Member
INSURANCE Parish Member

800.566.7007 | myknowledgebroker.com

Seven Seas on Nagawicka Lake

Casual & Fine Dining
Sunday Brunch
sevensseawi.com 262-367-3903

MICHAEL J. FINN S.C. ATTORNEY AT LAW PARISH MEMBER

262-367-8485
mjfinnsc@sbcglobal.net
163 E. Capitol Dr., Hartland, WI 53029

JENSON MOTORS Auto - Truck Repair

Hours: Mon-Fri 7:30-5:30
Proprietor: Guy Jenson
262-367-5556
364 Cottonwood Ave., Hartland, WI

LAKE COUNTRY REAL ESTATE
Scott Heyerdahl

262-719-6970
Sheyerdahl@firstwebber.com

GOLD MEDAL CARPET & UPHOLSTERY CLEANERS LLC

Your Parish Carpet Cleaner
Call Jim at: 414-254-4210
920-994-4003

Advanced Disposal

- Residential • Commercial
- Construction • Recycling • Roll Off Rentals

(262) 367-6040

CHARLES St. Charles School

St. Charles School... We choose Christ in learning, living, & values in the light of our faith.
262-367-2040
www.stcharlesschoolhartland.com

North Lake Family Dentistry

Patty Erickson, D.D.S.

W315N7641 Hwy 83, North Lake, WI
Phone: 262.966.7668
www.northlakefamilydentistry.com
northlakefamilydentistry@gmail.com

Hartland Terrace Assisted Living

- RN Lead 24-Hour Elite Care Team
- Full Continuum of Care • Memory Care
- All Inclusive Pricing • Private Studios
- Family Centered Care Model

327 North Avenue • Hartland | 262-369-4391
www.hartlandterrace.com

PATRIOT PLUMBING, INC. COMMERCIAL AND RESIDENTIAL

www.patriotplumbingwi.com
Earl Cull • 262-966-2284
MP221857 107112RT 107113RMT

Culver's

701 Industrial Ct., Hartland
262-367-5800

Heritage Lake Country

2975 Village Square Drive, Hartland, WI 53029
262-367-2975 • heritageseior.com

KLINK'S KARPETS, INC

Hartland's Floor Covering Center
Family Owned & Operated for over 47 Years

Carpeting & Hard Surfaces
107 North Ave. Hartland, WI
367-4670 Parish Member

FOX BROS.

306 Oconomowoc
262-367-2922
1700 D. Merton St.
262-567-8376

Open 7 days a week
8am-6pm

ECHO LAWN'S

A Complete Lawn, Landscape, and Snow Removal Service

Milwaukee Lake Country
414-462-6670 262-695-8152

Heritage Lake Country

2975 Village Square Drive, Hartland, WI 53029
262-367-2975 • heritageseior.com

DAVE PERRY Heating & Cooling

Proudly Serving the Lake Country Area for more than 20 years

Heating • Air Conditioning • Geothermal
New Construction • Replacement
262.966.1959
www.daveperryheatingandcooling.com

AVAILABLE FOR A LIMITED TIME

ADVERTISE YOUR BUSINESS HERE

Contact Jeff Tkachuk to place an ad today!
jtkachuk@4LPI.com or (800) 950-9952 x2513

SPRUNG ARMSTRONG AIR

Heating, Sheet Metal & Well Pump Service
7024 Main St., Merton
538-1400

Service • Repair & New Construction
Residential & Commercial
Parish Members

Lake Country Eye Care

580 Hartbrook Dr. • Hartland, WI 53029
Amber A. Dentz, OD - Parishioner
www.lakecountryeyecare.com
262-367-6610

Generations DENTAL

Jim Muentzenberger, D.D.S. and Kelly Muentzenberger, D.D.S. Parish Members
100 E. Capitol Dr. Hartland, WI 53029
Office: 262-369-2929
General Dentistry • Endodontics • Periodontics • Orthodontics • Pediatric Dentistry

Palmer's STEAKHOUSE
 www.Palmersteakhouse.com
 122 E. Capitol Dr. • Hartland, WI
 262-369-3939

Bob Hamilton
 207 E. CAPITOL DRIVE • HARTLAND, WI 53029
 262.367.2312
 BHAMILTO@amfam.com

JRC Tax & Accounting LLC
 Business & Individual Taxes,
 Accounting, Bookkeeping, Payroll
John R. Czech, E.A.
 jrcntax.accounting@outlook.com

HOPE HELP HEALING
 Compassionate Support in Hartland
 Do you wish you could stop certain behaviors?
 Do you question your spouse's online activity?
 Have you gone against your values?
 Has the intimacy vanished?
 Do you need support?
 Elizabeth H. Ph.D., M.A., M.Ed., C.C.P.T. (Certified Recovery Planner and Add. Therapist)
 www.ortonatwellnesscenter.com | 608-938-2665

REICHL ORTHODONTICS
 Creating a beautiful world one smile at a time!
 Located in Waukesha, Mukwonago & Hartland
 262-547-2827
 reichlortho.com

UnitedDrivingSchoolWI.com
ENROLL TODAY!

Wolf Electric LLC
 Commercial, Industrial, Residential
Garrett Wolf • Master Electrician/Parishioner
 Commercial • Industrial • Residential
 (262) 224-7310 • www.wolfelectricllc.com

Tel: 262.367.4154
 Fax 262.367.4198
 625 Walnut Ridge Drive, Ste #100
 Hartland, WI 53029-8803

Emanuele & Haut, CPAs, SC
 Certified Public Accountants
 142 E. Capitol Dr.
 Hartland, WI
 sam@ehcpas.com
 Parish Member
 262.367.1040

WEALTHSPIRE ADVISORS
Brion Collins
 CFP® Professional & Parishioner
 262.326.6090 | www.wealthspire.com
 We salute the St. Charles community and all who make such a profound difference.

What Will Be Your Legacy?
 If you value your faith and your family, I welcome the opportunity to share my biblical perspective in union with my financial experience in order to co-create a personal legacy strategy. I can assist with: Portfolio Management | Retirement Planning | Financial & Legacy Strategies | Special Needs Planning
Kurt Maltby, CFP®, ChSNC®
 CERTIFIED FINANCIAL PLANNER™
 Associate Vice President, Financial Advisor
Morgan Stanley
 20975 Swenson Drive, Waukesha
 Phone: (262) 523-8303 | NMLS # 1504808
 advisor.morganstanley.com/the-riverwood-wealth-management-group
 Morgan Stanley and its Financial Advisors do not provide tax or legal advice. Individuals should seek advice based on their particular circumstances from an independent tax advisor.
 Morgan Stanley Smith Barney LLC. Member SIPC. ©2016 MS&I

Pepino's
 Famous For Our Pizza Since 1971
 CARRY-OUT & DELIVERY 262-369-9050
 Sendik's Hartland Plaza - 600 Hartbrook Dr., Hartland

EVERLUKO FUNERAL HOME
 262-367-2150
PASSAGES
 Cremation Service
 262-367-2150

H+P CERTIFIED PUBLIC ACCOUNTANTS
 Mark G. Hayes, CPA
 262-367-5505 • 262-367-0545 Fax
 365 Cottonwood Ave., Suite A • Hartland, WI 53029
 mark@hpcpa.tax • www.hpcpa.tax

DUNN INVESTMENT MANAGEMENT GROUP
 of RBC Wealth Management
James P. Dunn
 Managing Director - Financial Advisor
 Senior Portfolio Manager - Portfolio Focus
 18500 West Corporate Drive, Ste. 100
 Brookfield, WI 53045
 Call (262) 395-1101 for an appointment
 james.dunn@rbc.com
 • Customized portfolio management & investment consulting for individuals & institutions
 • Comprehensive investment advice & retirement planning
 • Recently retired or changed jobs?
 Providing specialized 401K rollover solutions
 A Division of RBC Capital Markets LLC NYSE/FINRA/SIPC

CARPET PLUS, INC.
 We Bring the Showroom to You!
 (414) 573-0105
 Dan Taylor, Parish Member

Pella Upgrade your home with beautiful styles
 Get ready for the new year with Pella windows and doors.
 Pella Windows & Doors of Wisconsin has all the styles, finishes, and hardware to give your home a new look with upgraded energy efficiency. Whether you're interested in wood, fiberglass, or vinyl, Pella has the windows and doors to enhance your home, inside and out.
 Visit **PellaWI.com** for our latest offers.
 Mention this ad when you schedule your free, no-obligation consultation and at your appointment, receive a **free \$50 gift card*** for the new luxury Silverspot Cinemas at the Corners of Brookfield!
 *Limit one per household, while quantities last.
Gina Della
 General Manager
PellaWI.com
 © 2019 Pella Corporation

Visit the Pella Windows & Doors of Wisconsin showroom nearest you:
 Brookfield - Green Bay - Madison - Appleton | PellaWI.com | 888.984.1344

Wendy Ackley
 Relocation Specialist
 Parishioner
 262-490-7111

Lisa Mihas Piano Studio
 formerly Lisa Sauer Piano Studio
 300 Cottonwood Avenue, Suite 1
 Hartland, WI 53029
Lisa Mihas
 Instructor of Piano and Music Therapy
 414-322-5555
 pianopantsmihas@yahoo.com

PAUN Construction
 Specializing in Masonry Residential & Commercial
 W300 N7741 Christine Ln., Hartland, WI 53029
Robert J. Paun (262) 326-8043
 www.paunconstruction.com
 mail@paunconstruction.com

GOOD TIMES DAY CAMP
 262-521-8100 - WWW.GOODTIMESWI.COM
 Where happiness and wonderment come to play!
 • Now Enrolling Ages 3 - 15
 • 15 Acres & 2 Heated Pools
 • Many Athletic Fields
 • Swimming Lessons Included
 • Field Trips Included
 • Bussing to/from Hartland
 • Bussing to/from Brookfield
 • Worry Free Scheduling
 • Low Ratio's
 • Accepting Counselor Applications
 Where challenges are met, goals are accomplished, and friendships and memories made last a lifetime!

Wendy Ackley
 Relocation Specialist
 Parishioner
 262-490-7111

Vicki Marciniak
 When it comes to your home, it's more than just business, it's personal.
 Cell: (414) 243-5584
 vmarciniak@firstweber.com
 www.VickiMarciniak.FirstWeber.com

payrollDATA
 1020 James Drive, Ste O
 Hartland, WI 53029
 262-563-5150
 www.payrolldata.com

SPORTS GRILL
 PIZZA • FRIDAY FISH FRY • SANDWICHES
 *\$5.00 OFF ANY 16" PIZZA
 *SUNDAY'S "KIDS EAT FREE" WITH ADULT PURCHASE
 We do Parties & Catering!
 Not valid with any other offers or coupons
369-0079
 300 COTTONWOOD • HARTLAND
 PARISH MEMBER

PAUN Construction
 Specializing in Masonry Residential & Commercial
 W300 N7741 Christine Ln., Hartland, WI 53029
Robert J. Paun (262) 326-8043
 www.paunconstruction.com
 mail@paunconstruction.com

GOOD TIMES DAY CAMP
 262-521-8100 - WWW.GOODTIMESWI.COM
 Where happiness and wonderment come to play!
 • Now Enrolling Ages 3 - 15
 • 15 Acres & 2 Heated Pools
 • Many Athletic Fields
 • Swimming Lessons Included
 • Field Trips Included
 • Bussing to/from Hartland
 • Bussing to/from Brookfield
 • Worry Free Scheduling
 • Low Ratio's
 • Accepting Counselor Applications
 Where challenges are met, goals are accomplished, and friendships and memories made last a lifetime!

Wendy Ackley
 Relocation Specialist
 Parishioner
 262-490-7111

Vicki Marciniak
 When it comes to your home, it's more than just business, it's personal.
 Cell: (414) 243-5584
 vmarciniak@firstweber.com
 www.VickiMarciniak.FirstWeber.com

Please Support these **CONTRACTORS**
 Thank You to these contractors helping St Charles grow!

NELCO ELECTRIC, INC.
 GERMANTOWN, WI
 Commercial • Industrial • Residential
 24 Hour Service 262-502-9950
 WWW.NELCOELECTRIC.COM
 Barb Jarchow Parishioner

zimmerman
 ARCHITECTURAL STUDIOS, INC.
 200 West 9th Street, Apt. 200
 Milwaukee, WI 53233 | www.zimmerman.com
 (414) 438-9500
 (414) 438-9500

Lifetime Door Co
 GARAGE DOORS • DOOR OPENERS • REPAIRED OR REPLACED
 SALES • SERVICE • INSTALLATION
 262-567-9203

Vicki Marciniak
 When it comes to your home, it's more than just business, it's personal.
 Cell: (414) 243-5584
 vmarciniak@firstweber.com
 www.VickiMarciniak.FirstWeber.com

FRONTIER
 TITLE & CLOSING SERVICES
 1130 James Drive, Hartland, WI 53029
 Office: 262-361-4466 Fax: 262-361-4462
 www.frontiertitlellc.com
 Frontier Title & Closing Services, LLC
 Lake Country's Most Experienced Title & Closing Company
 Specializing in Residential, Commercial & New Construction Transactions
 Serving the Real Estate Community!

BUILDERS Hunginger
 SINCE 1907
 Kevin O'Toole, Parish Member
 Construction Manager General Contractors
 Brookfield, WI 262-797-0797

zimmerman
 ARCHITECTURAL STUDIOS, INC.
 200 West 9th Street, Apt. 200
 Milwaukee, WI 53233 | www.zimmerman.com
 (414) 438-9500
 (414) 438-9500

Lifetime Door Co
 GARAGE DOORS • DOOR OPENERS • REPAIRED OR REPLACED
 SALES • SERVICE • INSTALLATION
 262-567-9203