

October 20, 2019

TWENTY-NINTH SUNDAY IN ORDINARY TIME

## BAPTISMS

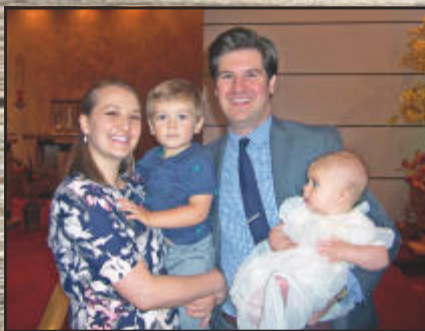
*Congratulations to all our newest St. Charles Parish members and their families!*



**August Alden Voss,**  
son of Michael and Amy Voss



**Crosby John Hanley,**  
son of John and Lauren Hanley



**Leo Lyndon McGill,**  
son of Brian and Katelyn McGill



**Solomon Patrick Gomez,**  
son of Nicholas and Katelyn Gomez



# WELCOME TO ST. CHARLES

---

**PASTOR: Fr. Ken Omernick**

**ASSOCIATE PASTOR: Fr. Nick Baumgardner**

nbaumgardner@stcharleshartland.org

**PASTORAL ASSOCIATE: 262-367-6704**

Elizabeth Thompson, ethompson@stcharleshartland.org

**Celiac Contact:** Rose Thomas: rctihm@yahoo.com or 630-915-6601

**PARISH OFFICE: 262-367-0800, Fax: 262-367-6960**

**Hours: Mon. - Fri., 8:00am- 4:00pm**

**Assistant to the Pastor:**

Terrie Carew, Ext. 202, tcarew@stcharleshartland.org

**Parish Receptionists:**

Debra Hertel, Ext. 226, dhertel@stcharleshartland.org

Joann Papa, Ext. 226, jpapa@stcharleshartland.org

**Parish Administrative Assistants:**

Kathy Gillstrom, Ext. 200, kgillstrom@stcharleshartland.org

Dee Anne Hamer, Ext. 200, dhamer@stcharleshartland.org

**DIRECTOR OF ADMINISTRATIVE SERVICES:**

Marge Beck, Ext. 201, mbeck@stcharleshartland.org

**DIRECTOR OF OPERATIONS:**

Mike Cattani, Ext. 229, mcattani@stcharleshartland.org

**DIRECTOR OF MAINTENANCE:**

Tim Orzechowski, Ext. 217, torzechowski@stcharleshartland.org

**COMMUNICATIONS SPECIALIST & BULLETIN:**

Renee Krier, Ext. 224, rkrier@stcharleshartland.org

**PARISH SCHOOL: 262-367-2040, school@stcharleshartland.com**

**PRINCIPAL:**

Dan Garvey, Ext. 208, dgarvey@stcharleshartland.org

**School Administrative Assistants:**

Lisa Moehrke & Karen Dejewski, Ext. 206

**ADVANCEMENT OFFICER: 262-361-5000**

Allison Caswell, acaswell@stcharleshartland.org

**DEPARTMENT OF CHILDREN'S FORMATION: 262-367-3277**

**Director of Children's Formation (PS-5):**

Alicia Van Hecke, Ext. 205, avanhecke@stcharleshartland.org

**Administrative Assistant:**

Trish Gilchrist, Ext. 230, tgilchrist@stcharleshartland.org

**DEPARTMENT OF STUDENT & YOUNG ADULT MINISTRIES:**

**262-367-3277 Ext. 221 or lifeteen@stcharleshartland.org**

**Director of Student & Young Adult Ministries:** Nick Scanlan

**Associate Director (EDGE 6-8):** Corrie Christiaansen

**Administrative Assistant:** Laura Zgrabik

**DEPARTMENT OF LITURGICAL MUSIC:**

**Director of Liturgical Music & Children's Choir Director:**

Scott Currier, Ext. 225, scurrier@stcharleshartland.org

**Associate Musician:**

Kathleen Latzke-Daley, Ext. 215, kldaley@stcharleshartland.org

**Liturgical Music Assistant:**

Maria Notch, Ext. 215, mnotch@stcharleshartland.org

**Liturgical Administrative Assistant:**

Erika Rutley, Ext. 215, erutley@stcharleshartland.org

**DIRECTOR OF ADULT & FAMILY MINISTRY:**

Nancy Neuser, Ext. 210, nneuser@stcharleshartland.org

**DIRECTOR OF STEWARDSHIP:**

Nancy Van De Laarschot, Ext. 214,

nvandelaarschot@stcharleshartland.org

**DIRECTOR OF DISCIPLESHIP:**

Jess Panlener, Ext. 212, jpanlener@stcharleshartland.org

## Eucharistic Celebrations

**Saturday Mass of Anticipation:** 5:00pm

**Sunday Mass Times:** 7:00am, 9:00am, 11:00am & 6:00pm

**Communion Service:** Monday ~ Friday: 6:30am

**Weekday Mass:**

Monday ~ Saturday: 8:30am

**Sacrament of the Sick**

The Anointing Mass is the second and fourth Friday at 8:30am or by appointment with Fr. Ken or Fr. Nick (scheduled with the Parish Office).

**Morning Prayer:** Monday ~ Friday: 7:30am, Saturday: 8:00am

**Rosary:** Monday ~ Friday: 8:00am, Tuesday Evening: 7:30pm

**Perpetual Help Devotions:** Tuesday after 8:30am Mass

**Eucharistic Adoration**

Mondays: 5:00-7:00pm with closing prayer (includes music)

Tuesdays: 6:30-8:00pm with 7:30pm Rosary and closing prayer

Fridays: 9:00am-3:00pm with the Divine Mercy Chaplet at 3:00pm followed by Benediction

**Reconciliation**

**Saturday: 3:30pm - 4:30pm & Thursday: 5:00pm - 6:00pm**

or by appointment (scheduled with the Parish Office)

**Parish Membership**

All Catholics are welcome to join our Parish and are asked to register on New Parishioner weekend, the first weekend of the month, or stop in at the Parish Office during office hours.

**Planning to be Married?**

Congratulations! Please notify St. Charles at least six months in advance. Weddings may be celebrated on Friday evenings and Saturdays at 11:00am and 2:00pm. Exceptions are made only with the permission of the Pastor. **Please contact Dee Anne Hamer at 262-367-0800 Ext. 222.**

**Are you expecting or adopting a child?**

St. Charles is honored to serve parents seeking Baptism for their child(ren). To find out more information about our preparation process and to schedule infant/child Baptisms, **please contact the Parish Office at 262-367-0800.**

**Becoming FULLY Catholic**

Are you unbaptized or baptized in a different Christian faith and considering becoming Catholic? Are you a baptized Catholic who did not receive the Sacraments of Reconciliation, Eucharist and/or Confirmation? St. Charles provides an adult formation process that will help you discover Jesus and His Holy Catholic Church. **Please contact Jess Panlener at 262-367-0800 Ext. 212.**

**Small Groups**

The Small Group movement at St. Charles offers you a way to authentically seek Jesus in small faith sharing communities. Small Groups gather in members' homes throughout Lake Country during Fall and Lent. For more information, **please contact Jess Panlener at 262-367-0800 Ext. 212.**

**OUTREACH SERVICES TEAM: Terri Blazek: 262-367-7608,**

jtblazek@wi.rr.com

**Prayer Network: prayernetwork@stcharleshartland.org**

**St. Vincent De Paul: 262-367-0800 (Parish Office)**

**Need Home Communion: 262-367-0800 (Parish Office)**

Mass Intentions for  
the Week of October 20th



**Sunday, October 20**

7:00 am † Mark Wisniewski  
9:00 am † Joseph & Dolly Crivello  
11:00 am † Susan Wilkey  
6:00 pm Living and Deceased Members of St. Charles

**Monday, October 21**

8:30 am † Robert Sizer

**Tuesday, October 22**

8:30 am † Thomas & Rita Mae Cassidy

**Wednesday, October 23**

8:30 am Special Intention

**Thursday, October 24**

8:30 am † Lucille Gallucci

**Friday, October 25**

8:30 am † Jim & Joanne Schram

**Saturday, October 26**

8:30 am † George Coleman  
5:00 pm † Rachel Hansen

**Sunday, October 27**

7:00 am † Bradd Hady  
9:00 am † Rose & Richard Geason  
11:00 am Living and Deceased Members of St. Charles  
6:00 pm † Dan Emmer



Wedding Banns

3rd Bann ~ Patricia Tews & Mark Ruehle

Please pray for the repose of the soul of

Jean Rosalia Gleisner

May her soul and the souls of all the faithful departed  
REST IN CHRIST'S PEACE.

Abbreviation Key

BR = Borromeo Room	MD = Music Dept
CH = Church	MR = Music Room (School)
CHPL = Chapel	PH = Parish Hall
CR = Conference Room	PO = Parish Office
HFRC = Holy Family Rec Center	SK = Staff Kitchen
IMC = Instructional Media Center	SR = Science Room
LTC = Life Teen Cafe (Student Lounge)	TL = Teachers' Lounge
CGS = Catechesis of the Good Shepherd	

**Sunday, October 20**

Doughnut Sunday, PH, After Morning Masses  
CGS Session IA (Ages 3-5), Atrium, 8:45am  
"Little Lambs" Childcare, 3K Classroom, 9:00am & 11:00am Masses  
Baptism during Mass, CH, 9:00am  
Becoming Fully Catholic, MR, 10:15am  
Child Formation Classes (Grades 1 & 3-5), Classrooms, 10:45am  
CGS Session IB (Ages 3-5), Atrium, 10:45am  
Baptisms during Mass, CH, 11:00am  
Parent Pre-Retreat Meeting, LTC, 12:15pm  
Emmaus Middle School Small Group, LTC, 5:00pm  
Life Teen Life Night, LTC, 7:15pm

**Monday, October 21**

After School Care, PH, 3:30pm  
EDGE: Middle School Ministry, BR/LTC/PH/CH, 6:30pm  
Outreach Services Team Monthly Meeting, CR, 7:00pm  
Women's Choir Rehearsal, MR, 7:00pm

**Tuesday, October 22 ~ Early School Release Day**

School Daily Mass (Grades 4K-4), CH, 8:30am  
Tuesday Breakfast Club, BR, 9:30am  
St. Vincent de Paul Food Pantry Open, Lawn Street, 10:00am-Noon  
After School Care, PH, 11:45am  
Teacher Inservice, STEM Lab/Classrooms, 12:00pm-3:30pm  
St. Vincent de Paul Meeting, CHPL, 12:30pm  
SVdP Food Pantry Open, Lawn Street, 5:30pm-7:00pm  
Reach More Training (Small Group Leaders), STEM Lab, 6:30pm  
Share the Joy Group, LTC, 6:30pm  
Technology Commission Meeting, SR, 6:30pm

**Wednesday, October 23**

After School Care, PH, 3:30pm  
Children's Choir Rehearsal, CH, 3:30pm  
CGS Session IC (Ages 3-5), Atrium, 4:00pm  
Hand Bell Choir Practice, CH, 5:30pm  
CGS Session ID (Ages 3-5), Atrium, 6:00pm  
Child Formation Classes (Gr. 1-5), Classrooms, 6:00pm  
Adult Choir Practice, CH, 7:00pm

**Thursday, October 24**

Men's Morning Group, BR, 5:30am  
School Daily Mass (Grades 5-8), CH, 8:30am  
Staff Meeting, BR, 10:30am  
Funeral Mass (Jean Gleisner), CH, 11:00am  
After School Care, PH, 3:30pm  
Flu Shots Drive, CR, 4:00pm (See page 9)  
Bread of Life Community Meal, BR, 5:30pm  
Hartland Chamber Business Trick or Treat, Downtown Hartland, 6:00pm  
Finance Council Meeting, IMC, 6:30pm  
Boy Scout Troop Meeting, PH, 6:30pm  
Boy Scout Troop Youth Protection Training, LTC, 7:00pm

**Friday, October 25**

Confirmation Retreat, Offsite, All Day  
Anointing of the Sick within Mass, CH, 8:30am  
Friday Morning Moms' Group, LTC, 10:00am  
Seton Pep Rally, Gym, 2:30pm  
After School Care, PH, 3:30pm  
St. Charles School Truck or Treat, Parking Lot, 4:30pm  
Convalidation, CH/CR, 5:30pm

**Saturday, October 26**

Confirmation Retreat, Offsite, All Day  
Volunteer Appreciation Dinner Event, BR, 6:00pm

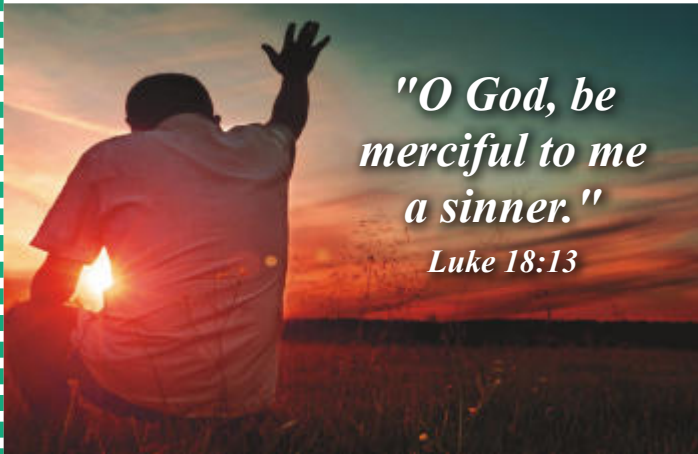
**Sunday, October 27**

Confirmation Retreat, Offsite, All Day  
"Little Lambs" Childcare, 3K Classroom, 9:00am & 11:00am Masses  
Cornerstone Campaign Information Meeting, BR, 12:00pm  
Emmaus Middle School Small Group, LTC, 5:00pm





Spend 15 minutes every day in prayer with Scripture!



*"O God, be merciful to me a sinner."*

*Luke 18:13*

- Am I like God, who is a God of justice? Do I hear the cries of the poor, the oppressed, and the widow? What do I do to assist these people? Am I humble in prayer?
- Do I exalt or humble myself - in prayer, to the Lord, with other people? Do I face my sin? Or do I think highly of myself? How can I become more humble, like Jesus, this week?

**Readings for the Week of October 20th**

**Sunday:** Ex 17:8-13/Ps 121:1-2, 3-4, 5-6, 7-8 [cf. 2]/2 Tm 3:14-4:2/Lk 18:1-8  
**Monday:** Rom 4:20-25/Lk 1:69-70, 71-72, 73-75 [cf. 68]/Lk 12:13-21  
**Tuesday:** Rom 5:12, 15b, 17-19, 20b-21/Ps 40:7-8a, 8b-9, 10, 17 [8a and 9a]/Lk 12:35-38  
**Wednesday:** Rom 6:12-18/Ps 124:1b-3, 4-6, 7-8 [8a]/Lk 12:39-48  
**Thursday:** Rom 6:19-23/Ps 1:1-2, 3, 4 and 6 [Ps 40:5]/Lk 12:49-53  
**Friday:** Rom 7:18-25a/Ps 119:66, 68, 76, 77, 93, 94 [68b]/Lk 12:54-59  
**Saturday:** Rom 8:1-11/Ps 24:1b-2, 3-4ab, 5-6 [cf. 6]/Lk 13:1-9  
**Next Sunday:** Sir 35:12-14, 16-18/Ps 34:2-3, 17-18, 19, 23 [7a]/2 Tm 4:6-8, 16-18/Lk 18:9-14

**READ. REFLECT. RESPOND. REST.**

*Cutout and keep in your bible for reference!*



**THE CORNERSTONE PROJECT**

*Answering Christ's Call*

We will hold a parish meeting to update the community on **The Cornerstone Project - Answering Christ's Call: Sunday October 27th** after the 11:00 am Mass in the Borromeo Room.

As some of the background study of parish needs and rationale for the project will be presented, this meeting will be specifically addressed to families that have joined St. Charles parish since the initial Cornerstone Project Campaign in 2016.

Information on the current project status will also be included. Cornerstone Campaign materials will be distributed at that time. Please RSVP your attendance to Karen Dejewski at [kdejewski@stcharleshartland.org](mailto:kdejewski@stcharleshartland.org).

**Bulletin Due Dates!**

If you have an event(s) you would like to publicize in a November, December and January bulletin please submit your information by the due dates listed below. This earlier deadline is due to the printer's holiday schedule. Please submit all articles by 8:00 am on the due date. Thank you!

- Nov. 17th Bulletin information is due Nov. 11th
- Nov. 24th Bulletin information is due Nov. 13th
- Dec. 1st Bulletin information is due Nov. 18th
- Dec. 8th Bulletin information is due Nov. 25th
- Dec. 15th Bulletin information is due Dec. 2nd
- Dec. 22nd Bulletin information is due Dec. 9th
- Dec. 29th Bulletin information is due Dec. 16th
- Jan. 5th Bulletin information is due Dec. 18th

**Bulletin Advertisers of the Week**

Please support our advertisers!



**KOWAL | INVESTMENT GROUP**

**Aaron T. Kowal, CFP®**

W238N1690 Busse Rd., Ste. 100, Waukesha, WI 53188  
262-522-4040

[www.kowalinvestmentgroup.com](http://www.kowalinvestmentgroup.com)

Call us to schedule your free, no obligation, financial check-up today.

Securities offered through Raymond James Financial Services, Inc. Member FINRA and SIPC. Investment Advisory Services offered through Raymond James Financial Services Advisors, Inc. and Kowal Investment Group, LLC, an Independent Firm.



**PARISH SUPPORT FOR THE WEEKEND OF SEPTEMBER 8TH**

2019-2020	
Envelopes.....	\$19,318.00
Offertory.....	\$1,588.00
Weekend Total .....	\$20,906.00
YTD .....	\$334,865.23

2018-2019	
Envelopes.....	\$21,919.00
Offertory.....	\$1,606.25
Weekend Total .....	\$23,525.25
YTD .....	\$341,950.66



## Server Training Starts Soon!

All St. Charles youth in 4th grade through high school are invited to an active role in our parish liturgies by being a server. The server has a very important role in helping both the priest at Mass and our parish community in worship.

Training is provided for all new servers on Saturday, Nov. 23rd following the 5:00 pm Mass. **If you wish to join our parish's server crew, please complete the online registration form located on the parish website under news stories or forms can be found on the information wall.**

Please note: Class size is limited! Students will be registered for each class on a first come, first choice basis. If you or your parents have any questions, please call Beth Thompson, Pastoral Associate, at 367-6704. We look forward to having you join us!




Members of St. Charles Parish pray the rosary for America as part of the October 12, 2019 National Public Square Rosary Rally. Thank you to Michael Finn for letting us pray outside your downtown Hartland office.

You are cordially invited to the

### St. Charles 7th Annual Ministry/Volunteer Appreciation Celebration

Join us **Saturday, October 26th** in the St. Charles Borromeo Room following the 5:00 pm Mass for heavy hors d'oeuvres, beverages and desserts

This is our opportunity to say THANK YOU for all you do to support the staff and ministries here at St. Charles. Please **RSVP by Oct. 23rd** on the sign-up shelf or call Nancy Van De Laarschot at 262-367-0800 Ext. 214.



### St. Charles Dining Out!

**Endter's Sports Grill in Hartland Sunday, Oct. 20th - 4 pm to 10 pm**

Mention St. Charles and Endter's will donate \$5 for each large pizza or \$3 for each small pizza to St. Charles School. Offer good for dine in or carry out. For carry out call 262-369-0079.

Remember to buy SCRIP for Endter's in the Parish Office and then spend it on October 20th.

## Jesus & Me Pumpkin Patch Event held on Friday, Oct. 4th

ST. VINCENT de PAUL SOCIETY



**FOOD PANTRY NEEDS:** oatmeal - small canisters, salad dressings, rice or pasta sides, deodorant and laundry detergent.

*"The hunger for love is much more difficult to remove than the hunger for bread." - Mother Teresa*

Does your heart long to ease the suffering of a stranger? To bring smiles to those longing for affirmation of their worth? Would you like to help a single parent feed his children? Or perhaps you could make life easier for those elderly neighbors who struggle financially. Blessing others through your charitable donations to SVdP brings the love of Christ to those you may never meet on this side of heaven. Won't you help us ease their needs?

The food pantry is located at 229 Lawn Street, Hartland. It is open Tuesdays between 10 am and noon. It is also open on the second and fourth Tuesday evening of each month between 5:30 pm and 7 pm. If you need other assistance or are interested in joining our ministry of service to the poor, please contact SVdP at 262-367-0800.

*Donation envelopes to help the needy in Hartland are located at the SVdP collection boxes in the narthex and next to the hall sign-up shelf. Food donations may be placed in the SE corner of the narthex any time the church is open.*



Calling All Student Chess Players

Calling all student chess players and those youngsters who want to learn chess.

The St. Charles Parish and School Chess Team kicks off the year on Wednesday, Nov. 13 from 6 pm to 7:15 pm in the STEM Lab. All parish and school students in 1st through 8th Grades are welcome to join. All experience levels are invited. We only ask that you have a positive attitude and want to learn the game.

The team, led by experienced chess instructor Chris Seaman, meets about twice a month on Wednesdays between November and late April.

Questions? Please contact Christina Holmes at 360-521-8554 or calarussa@gmail.com.

**All Souls' Memorial Mass**  
11:00 am on Saturday, November 2nd

As Christians, we believe that the bonds of love that sustain us on earth are not broken by death; love is eternal. Each year we gather to remember those we have loved who are now with our Lord, to pray for them and to ask their prayers for us.

Anyone who is mourning the death of a loved one, whether it is recent or occurred long ago, is invited to our annual Memorial Mass on Saturday, November 2nd, at 11:00 am. For more information, please call Elizabeth Thompson, Pastoral Associate, at 367-6704.

**"Share The Joy" Women's Group**  
Starting Soon!

**"The Bible and the Virgin Mary" Series**  
Begins Tuesday, Oct. 22nd at 6:30 pm  
St. Charles Borromeo Room

All women of the parish are invited to join our group for an evening that includes viewing and discussing a video, prayer, socializing, spiritual enrichment and dessert! Make new friends while sharing your faith and a smile or two!

This group gathers monthly during the school year on Tuesdays. Future dates are Oct. 22, Nov. 19, Jan. 28, Feb. 18, March 24, April 28 and May 26.

Contact Nancy Neuser at [nneuser@stcharleshartland.org](mailto:nneuser@stcharleshartland.org) to request more information or to join .... or JUST SHOW UP!

Join the St. Charles  
Knitting and Crochet Ministry

St Charles Knitting and Crochet Ministry, sponsored by Christian Women, is in its second full year of creating items for charity with truly talented people who want to give to others in need. We also want to thank those in our parish who have donated yarn and fabric for our creations.

The group meets the 1st and 3rd Wednesdays from 10 am to 12 pm in the Borromeo Room and new members are always welcome. We have people willing to teach you to knit or crochet. If you have any questions or can't join us on Wednesdays but want to contribute, call Ann Hansen 920-763-4773 or Rita Horne 262-563-1245.



## Events & News at St. Charles Parish School

**SCRIP Can Help with Halloween:** Use SCRIP to purchase your costume or candy for Halloween. Remember, when you buy products with SCRIP gift cards, you support our parish and school! You can purchase SCRIP online or after all Masses in the Parish Office. SCRIP gift cards are available in the Parish Office and are listed on the school website under SCRIP/SCRIP order Form. If you have any questions, please contact the Parish Office.

**Daisy Scouts:** Looking for kindergarten or first grade girls interested in Daisy Scouts! St. Charles Parish School Troop 11104 is open for registration. Register your child online at [www.gswise.org](http://www.gswise.org) and search for Troop 11104 St. Charles Hartland. Meetings will begin in November and run monthly. Please consider signing up to be a parent helper, treasurer and/or cookie lead person. Please contact Amy Galati with any questions at [galati.amy@gmail.com](mailto:galati.amy@gmail.com).

**Endter's Night:** St. Charles Night at Endter's in Hartland will be on Sunday, October 20 from 4-10 pm. Endter's will donate \$5 for every large pizza and \$3 for every small pizza to St. Charles Parish School. Dine in or carry out. To make the most of this dining night out, buy SCRIP for Endter's in the Parish Office and then spend it on your dinner! Endter's has the highest profit rate of all our SCRIP vendors with 20% profit given back to St. Charles. Thank you, Endter's! SCRIP form can be found on the parish or school website. Drop it off at the Parish Office and pick up your SCRIP.

**Early Release Day:** Our students will have early dismissal on Tuesday, October 22 at 11:45 am for Teacher In-service.

**Box Tops Program Changes:** Scan instead of clip! Box Tops have changed to an app format! The benefits for St. Charles will stay the same. Simply download the free Box Tops app and find St. Charles School. Then scan your receipts within 14 days, and the app will automatically add to our school's earnings. And ... we can double our cash for a limited time! The program will continue to honor clipped Box Tops until their expiration dates. Please continue to clip them and turn them in. The Box Tops program is encouraging us to double up while they transition to the new program.



Mark your calendars and plan to join your fellow parishioners on February 22, 2020, for the 20th Annual St. Charles Gala and Auction to be held at Weissgerber's Golden Mast Inn at 5:30 pm! This event is one of St. Charles' largest fundraisers of the year and this is a chance for you to mingle with friends while supporting our church and school. More information will be shared in the bulletin in the following months.

### How Can You Help?

Preparations are underway and we are looking for sponsors, auction item donations, an auctioneer and volunteers. If you are able to support the event in any of these ways, please contact Kristin Walsh at [czotter613@me.com](mailto:czotter613@me.com) or Lisa Andekian at [elizabeth.andekian@gmail.com](mailto:elizabeth.andekian@gmail.com)

Thanks for your support and we look forward to seeing you at this amazing event.



## SKI CLUB FOR 2020 SEASON SAVE THE DATES

Ski and Snowboard Club: Four Friday nights have been reserved for the St. Charles Ski and Snowboard Club for the 2020 Season. Those dates are **Jan. 10, Jan. 24, Feb. 7** and **Feb 14**. The ski nights begin at 4 pm and all ski nights take place at Little Switzerland in Slinger.

The Ski Club is very popular and a terrific way to meet school and parish families. Beginners and experienced skiers are welcome! **Watch for future bulletins for registration information.**

Also the St. Charles Ski and Snowboard Club has put together a Facebook site, <https://www.facebook.com/groups/1908907735895827/> to help you swap, buy and sell used equipment such as skis, boots, boards, coats, etc.

### Circle of Love

If you haven't turned in your Circle of Love Sponsor Sheets yet, please do so ASAP. Deposit them in the Gift Box marked "Circle of Love" located on the parish sign-up shelf.



Look for Circle of Love's Miracle Tree the weekend of November 2nd & 3rd. The tree will be located in the Narthex. Take a tag off the tree and make Christmas brighter and happier for someone in need.

If you have any questions, call Kathy Gillstrom at 262-367-1075 or Kathy Romaine at 262- 691-3684.

**Volunteers:** Our next Meeting is Tuesday, Oct. 29th at 12:30 pm in the Borromeo Room.

## 40 DAYS FOR LIFE™

From Sept. 25th to Nov. 3rd, 40 Days for Life Campaigns will take place on the sidewalks outside abortion and birth control centers all over the world. Wisconsin vigils will take place this fall in Madison, Milwaukee, La Crosse, Sheboygan, Green Bay, and a number of smaller communities. For information on vigils in your area visit [www.40daysforlife.com](http://www.40daysforlife.com) or join the St. Charles Respect Life Ministry on Tuesdays from noon until 1:00pm. If you need a ride, please be at the church parking lot at 11:30am and parishioners can carpool. Any questions, please call Ruth Chadwick 262-367-8976 with questions.



### Look for the pink & blue flags at St. Charles!

During October, there will be 106 pink & blue flags placed on the grounds at St. Charles. October is respect for life month. The St. Charles Respect for Life Ministry asks that everyone continue to pray for the **106**

**Holy Innocents who are aborted every hour** in the United States. We also ask that you pray for all the mothers and fathers who are seeking our love and forgiveness. Please know your prayers are being heard by our loving and merciful Father as Wisconsin abortions are decreasing.

*"By abortion, the mother does not learn to love, but kills even her own child to solve her problems. And by abortion, the father is told that he does not have to take any responsibility at all for the child he has brought into the world. That father is likely to put other women into the same trouble. So abortion just leads to more abortion. Any country that accepts abortion is not teaching the people to love, but to use any violence to get what they want. That is why the greatest destroyer of love and peace is abortion. " Mother Teresa*

## UNPLANNED...THE MOVIE

Wednesday, October 30

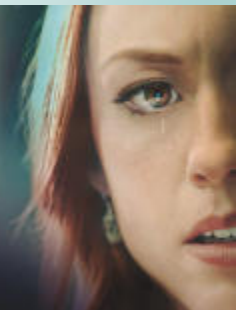
6:30pm in the Borromeo Room

Unplanned is the inspiring true story of one woman's journey of transformation. All Abby Johnson ever wanted to do was help women. As one of the youngest Planned Parenthood clinic directors in the nation, she was involved in upwards of 22,000 abortions and counseled countless women about their reproductive choices. Unplanned is the most important movie you'll ever see on the most controversial issue of our time. No one will leave this film unmoved by Abby's journey

Please RSVP if you are interested in attending by signing up on the sign-up shelf. The movie is FREE. We need a count for how many seats to set up. But please come at the last minute! Don't miss this opportunity to learn more about "women's health" and the abortion agenda. We will have refreshments available.

This movie is sponsored by the St. Charles Respect for Life Ministry. (This movie is rated "R" for graphic images. Children under 17 must be accompanied by a parent.)

WHAT SHE  
SAW CHANGED  
EVERYTHING  
UNPLANNED



## Pray for LIFE

Holy Hour for Life National Day of Prayer & Penance

Wednesday, Oct. 23rd  
6:30 – 7:30 pm

St. Charles Respect for Life Ministry will join Saint Teresa of Calcutta in celebrating a Holy Hour for Life with Deacon Allen Olson presiding. Please join us in prayer for all human life from conception to natural death.

Saint Teresa of Calcutta Parish  
W314 N7462 Highway 83, North Lake

## Christian Womens' Salad Supper Event was a Big Success!

Many women came to learn more about this wonderful Ministry while enjoying each others company as well as great food. The next Salad Supper Event is Feb. 12, 2020. So mark your calendars!



## "Little Lambs Childcare" Is Looking For Paid Adult Leaders!

*Jesus said, Let the children come to me.*

St. Charles is presently hiring Adult Leaders for our "Little Lambs" childcare ministry during the 9 and 11 am Masses on Sunday mornings as well as some evening and weekend events and programs.

"Little Lambs" serves children walking through age 4 in the St. Charles 3K classroom. Our childcare workers provide parents a safe, loving, faith filled, fun environment for their littlest ones while they attend mass nearby or participate in some select evening or weekend events or training sessions. To apply contact Marge Beck in the parish office at 262-367-0800 or [mbeck@stcharleshartland.org](mailto:mbeck@stcharleshartland.org).



Get Ready For  
The Flu Season!  
Come to St. Charles for  
your flu vaccination

Thursday, Oct. 24th  
from 4 pm to 7 pm  
St. Charles Parish - Enter  
through the church doors

Bring along your insurance or medicare cards to process the payment.

Hartland's own **Hometown Pharmacy** (downtown Hartland) will be at St. Charles to conduct the vaccination and process the insurance paperwork.



## Lake Country Bread of Life Community Meals at St. Charles

St. Charles Parish is the home for the Lake Country Bread of Life Community Meal. What began as a meal for the needy in our area has turned into a host program that includes seniors and others in need of a good meal and friendship. If you or someone you know could use some fellowship and a good healthy meal, please invite them to join us **Thursday, Oct. 24th at 5:30pm in the Borromeo Room**. Meals are prepared on the 4th Thursday of every month and the 3rd Thursday in November & December by area churches and organizations and served at St. Charles. We also offer blood pressure readings before the meal.

St. Charles Outreach Services Team oversees the event. If you would like to volunteer or have questions please contact the Parish Office or [humanconcerns@stcharleshartland.org](mailto:humanconcerns@stcharleshartland.org).

## Become a member of the St. Charles Outreach Service Team

Outreach Services Team is an outreach ministry of St. Charles Parish. Members of this group assist parishioners, members of our local community and also our sister parish La Sagrada Familia in the Dominican Republic as needed. Some of our volunteer projects include serving the Bread of Life monthly meal at St. Charles, 1st Communion Clothes Drive, 175 Archdiocese of Milwaukee Anniversary Bundle Package, Men's Shelter Meals and assisting teens who prepare a meal at the Ronald McDonald house in Milwaukee.

To learn more about this ministry or to see the many opportunities to help others in need, please visit the parish website: [www.parish.stcharleshartland.com/Serve Christ Tab/Outreach/Outreach Services Team Page](http://www.parish.stcharleshartland.com/Serve_Christ_Tab/Outreach/Outreach_Services_Team_Page) or contact Terri Blazek at 262-367-7608.

## National Vocation Awareness Week

National Vocation Awareness Week will be celebrated in our country November 3-9, 2019. Please ask Our Lord for more dedicated, holy priests, deacons and consecrated men and women. May they be inspired by Jesus Christ, supported by our faith community, and respond generously to God's gift of a vocation. If you would like to learn more about vocations visit <https://www.archmil.org/Vocations.htm>.



## Refund Support Vocations Program (RSVP)

*In keeping with the Mission of the Knights of Columbus to ever seek a higher purpose!*

The Kettle Moraine Council 3562 seeks to Keep the Faith alive by supporting our seminarians and postulants. As the strong right arm of the church, the Knights of Columbus are committed to providing moral, financial and spiritual support to future priests and religious at all stages of their formation. Our members are totally committed to the success of these inspired men and women.

The Knights of Columbus stand in solidarity with our priests and religious. Through this program, the council and parish families raise funds to support seminarians in their area. Though financial support is vitally important, it is not the only aspect of RSVP. Councils are also called to provide their "adopted" seminarians or religious aspirant with moral support and continuing prayers for their success."

### Our 2019-2020 RSVP Recipients:

1. Michael Malucha (St. Charles, Hartland)
2. Michael Courchaine (St. Charles, Hartland)
3. Matt Kirk (St. Charles, Hartland)
4. Robert Ross (St. Charles, Hartland)
5. Br. John of the Cross (St Charles, Hartland)
6. Zach Hastings (St Charles, Hartland)
7. Sr. M. Paula Van Thienen (Schoenstatt Sister of Mary)
8. Tim Schumaker (Basilica of St. Josaphat, Milwaukee - Intern at St. Charles, Hartland)
9. Deacon Mr. Ed Sanchez (St. Anthony Parish, Milwaukee)
10. Raphael Roxas (St. George Greek Melkite, Milwaukee)
11. Deacon Mr. Carlos Londono (Queen of Apostles, Pewaukee)
12. David Tomasiewicz (Queen of Apostles, Pewaukee)

They are also sponsoring Permanent Diaconate Candidate Mr. Rob Mitchell presently in his last year of Formation.

## Women Are Invited to Pray for Vocations to the Priesthood

Join women for prayer and spiritual formation at the de Chantal gatherings at Saint Francis de Sales Seminary on **Tuesday, October 22**. The sessions will be led by Fr. Rob Kroll, SJ, director of spiritual formation at the Seminary. After Eucharistic Adoration, Fr. Rob will offer formation on Our Essential Purpose: Principle & Foundation based upon meditations from St. Ignatius Loyola. A light reception follows benediction.

The gatherings are offered at 9:30 am and 7:00 pm at Saint Francis de Sales Seminary, 3257 South Lake Drive, St. Francis.

RSVP to [newheartnewsprit@sfs.edu](mailto:newheartnewsprit@sfs.edu) or 414-747-6463. Please join us, and bring a friend!

## Get to know St. Teresa of Calcutta like never before...

**Join us for "I Thirst" on Tuesdays at 6:30pm**  
**St. Teresa of Calcutta Parish, W314N7564 State Rd 83,**  
**North Lake church**

"I Thirst" was Jesus' message to Mother Teresa, a "call within a call" of His thirst for love and for souls which became so distinctively clear that from then on an ardent longing to satiate His thirst took complete possession of Mother's heart. Reflect on this beautiful patron of our parish, and how we can better live out her life of service

### Mother Mary Catherine, Oct. 22, North Lake Church

Mother Mary Catherine was a Missionary of Charity for almost ten years while living in New York. When Mother Teresa visited there, she would often be her driver. Due to health concerns, she did not take her final vows. After much discernment, she formed a new community, Missionaries of the Word, based in Bailey's Harbor, WI. \*

\* All presentations will begin promptly at 6:30pm in the North Lake church and last about 1 1/2 hours followed by a meet and greet with the speakers and a reception in the Gathering Space. Please join us. Bring family & friends.

## Stress in Your Marriage?

There is less than a week before the next Retrouvaille weekend, so don't wait any longer. Sign-up now. Retrouvaille is a program for married couples who feel frustrated or angry in their marriages. Some experience coldness and simply shut down. Others experience conflict and arguments in their relationship. Most don't know how to change the situation or even communicate with their spouse about it. This program has helped tens of thousands of couples experiencing marital difficulty at all levels including disillusionment and deep misery. For confidential information about or to register for the program beginning with a weekend October 25-27 in Oconomowoc, please call (414) 502-7685 or email: [Milwaukee@HelpOurMarriage.org](mailto:Milwaukee@HelpOurMarriage.org) or visit our website at <http://www.HelpOurMarriage.org>

**TODD WANGERIN**  
ELECTRIC, Inc.

Free Estimates - Licensed - Insured  
Over 20 years experience

Todd Wangerin 262-719-4411  
twelectric4411@att.net

**Falbo Bros. Pizzeria**  
Small Business Specials & Catering  
\$5.00 lunch special - 2 slices and a soda  
Extensive Delivery Range  
418 Merton Ave., Hartland 262-367-2700

**Alan Giuffre, S.C.** CERTIFIED PUBLIC ACCOUNTANT  
Alan Giuffre, CPA, PFS • (say "JU-FRAY")  
E-mail: alan@alangiufrasc.com  
Website: www.alangiufrasc.com  
262.367.4TAX (4829) FAX 262.367.9098  
3945 HICKORY KNOLL RD  
HARTLAND, WI 53029-9362

**BIEBEL'S True Value.**  
Hardware & Rental  
HARTLAND  
580 Hartbrook Dr. • 369-1070

**Oconomowoc Landscape Supply & Garden Center**  
Landscaping Supplies • Annuals  
Perennials • Trees & Shrubs  
Increase your Home's Value Enjoy a Beautiful Landscaped Yard  
262-567-1777  
www.olandscape.com • Corner of K & 67 at bypass

**HARTLAND INN**  
Fine Food & Cocktails  
Private Rooms For All Occasions  
www.foodspot/hartlandinn.com  
367-6800  
Downtown Hartland Margrit Meier

Complete line of Hispanic & American Groceries.  
We specialize in fresh corn tortillas, Mexican bakery and our famous El Rey Tostadita Chips.  
Serving Milwaukee Since 1978  
El Rey 916 S. Cass E. Chicago Dr. Milwaukee, WI 53204 414-943-1640  
El Rey Family Market 3200 W. Oklahoma Ave. Milwaukee, WI 53219 414-541-5200  
El Rey Plaza 3524 W. Sunnyside St. Milwaukee, WI 53215 414-643-1816  
El Rey Food Mart 1323 W. Sunnyside St. Milwaukee, WI 53204 414-388-7786

www.hhortho.com  
**Holzauer, Hewett & Barta s.c.**  
Orthodontic Care For Children And Adults  
Daniel Holzauer DDS MS | Charles Hewett DDS MS | Joshua Barta DDS MS  
520 Hartbrook Dr., Hartland 262-567-7076  
2316 N. Grandview Blvd, Waukesha 262-547-6365  
10225 W. Capitol Dr., Wauwatosa 414-463-5700

**BUNZEL'S OLD FASHIONED MEAT MARKET**  
Fresh Custom Cut Choice Meats  
Party Trays • Catering  
Thank You For Supporting A Family Tradition  
9015 W. BURLEIGH 873-7960  
www.bunzelmeats.com

**Lake Country Financial Group LLC**  
Steven R. Seibel, CLU, ChFC, LUTCF  
Financial Advisor  
(262) 646-4115  
Securities offered only through Chicago Investments, Inc., a registered broker-dealer and member FINRA/SIPC. Lake Country Financial Group LLC and CoreCap are separate and unaffiliated entities. Advisory services offered through Chicago Advisors, Inc., a registered investment advisor.

**FOOT & ANKLE**  
Associates of Wisconsin  
Parish Member  
Dr. Amy Galati  
Call: (262) 542-3779  
www.footandanklewi.com

**catholicmatch Wisconsin**  
CatholicMatch.com/WI

**NEVER MISS A BULLETIN!**  
Sign up to have our weekly parish bulletin emailed to you at [www.parishesonline.com](http://www.parishesonline.com)

**Pat's Heating & Air Conditioning**  
30 YEARS OF EXCELLENCE  
262-567-7499  
OCONOMOWOC  
www.patsheating.com

**RENEU HEALTH & MEDSPA**  
Office of Dr. Jill Wohlfiel  
Complete Medispa Menu of Services  
W359 N 5002 Brown St., Suite 208  
Oconomowoc, WI 53066  
www.reneuhealth.com • 262-560-1920

**4LPi WE'RE HIRING AD SALES EXECUTIVES**

- Full Time Position with Benefits
- Sales Experience Preferred
- Paid Training
- Overnight Travel Required
- Expense Reimbursement

CONTACT US AT [careers@4LPi.com](http://careers@4LPi.com)  
[www.4LPi.com/careers](http://www.4LPi.com/careers)

**Hartland Village Mart**  
301 E. Capitol Drive • Hartland  
CITGO  
• Fresh Bakery Daily  
• Pizza • Sandwiches  
• Groceries/Propane  
• Beer and Beverages  
Fast & Friendly Open Daily 5 a.m.-10 p.m. Call Ahead 367-8099

**TOWN BANK**  
AWINTRUST COMMUNITY BANK  
800-433-3076  
www.townbank.us

**EZ WINDOW CLEANING**  
[www.e-zwindowcleaning.com](http://www.e-zwindowcleaning.com)  
262-349-9411

**MERTON FEED CO.**  
Bird - Horse - Dog Food, Etc.  
Softener Salt - Lawn Seed & Fert.  
[www.mertonfeed.com](http://www.mertonfeed.com)  
262-538-1250

**R&R Insurance**  
Dan Wolgram Parish Member  
Rick Kalscheuer Parish Member  
800.566.7007 | [myknowledgebroker.com](http://myknowledgebroker.com)

**Seven Seas on Nagawicka Lake**  
Casual & Fine Dining  
Sunday Brunch  
[sevensesawi.com](http://sevensesawi.com) 262-367-3903

**MICHAEL J. FINN S.C.**  
ATTORNEY AT LAW  
PARISH MEMBER  
262-367-8485  
[www.michaelfinnlaw.com](http://www.michaelfinnlaw.com)  
163 E. Capitol Dr., Hartland, WI 53029

**VISU-SEWER, INC.**  
262-695-2340  
Professional Sewer Inspection, Maintenance and Rehabilitation Services  
Parish Members  
[www.visu-sewer.com](http://www.visu-sewer.com)

**DON CULL EXCAVATING**  
W298 N9248 Center Oak Rd  
Septic & Mound Systems Grading  
966-7038  
MPRS 221589

**LAKE COUNTRY REAL ESTATE**  
Scott Heyerdahl  
262-719-6970  
[Sheyerdahl@firstweber.com](mailto:Sheyerdahl@firstweber.com)

**Advanced Disposal**  
Residential • Commercial  
Construction • Recycling • Roll Off Rentals  
(262) 367-6040

**CHARLES School of Learning**  
St. Charles School... We choose Christ in learning, living, & values in the light of our faith.  
262-367-2040  
[www.stcharlesschoolhartland.com](http://www.stcharlesschoolhartland.com)

**JENSON MOTORS**  
Auto - Truck Repair  
Hours: Mon-Fri 7:30-5:30  
Proprietor: Guy Jenson  
262-367-5556  
364 Cottonwood Ave., Hartland, WI

**Hartland Terrace**  
Assisted Living  
• RN Lead 24-Hour Elite Care Team  
• Full Continuum of Care • Memory Care  
• All Inclusive Pricing • Private Studios  
• Family Centered Care Model  
327 North Avenue • Hartland | 262-369-4391  
[www.hartlandterrace.com](http://www.hartlandterrace.com)

**PATRIOT PLUMBING, INC.**  
COMMERCIAL AND RESIDENTIAL  
[www.patriotplumbingwi.com](http://www.patriotplumbingwi.com)  
Earl Cull • 262-966-2284  
MP221857 107112RT 107113RMT

**Culver's**  
701 Industrial Ct., Hartland  
262-367-5800

**North Lake Family Dentistry**  
Patty Erickson, D.D.S.  
W315N7641 Hwy 83, North Lake, WI  
Phone: 262.966.7668  
[www.nlakefamilydentistry.com](http://www.nlakefamilydentistry.com)  
[northlakefamilydentistry@gmail.com](mailto:northlakefamilydentistry@gmail.com)

**KLINK'S KARPET**  
Hartland's Floor Covering Center  
Reasonable - Reliable  
Carpet, Vinyl, Ceramic, Wood  
107 North Ave. 367-4670  
Hartland, WI Parish Member

Where your destination begins  
Cruise Specialist  
Disney Specialist  
Mexico, Caribbean, Hawaii  
Jamie Lovejoy  
(262) 844-0881  
[www.jamielovejoytravel.com](http://www.jamielovejoytravel.com)

**GOLD MEDAL CARPET & UPHOLSTERY CLEANERS LLC**  
Your Parish Carpet Cleaner  
Call Jim at: 414-254-4210  
920-994-4003

**HERITAGE LAKE COUNTRY**  
We Can Help You with the Next Step!  
2975 Village Square Drive, Hartland, WI 53029  
262-367-2975 • [heritagesenior.com](http://heritagesenior.com)

**Brion Rothschild**  
Brion Collins  
Sophisticated financial planning and investment management solutions  
CFP® Professional & Parishioner  
262.326.6090 | [www.belr.com](http://www.belr.com)

**DAVE PERRY**  
heating • cooling • air conditioning  
Proudly Serving the Lake Country Area for more than 20 years  
Heating • Air Conditioning • Geothermal  
New Construction • Replacement  
262.966.1959  
[www.daveperryheatingandcooling.com](http://www.daveperryheatingandcooling.com)

Henry & Diane Barvinski, Co-Owners  
**ECHO LAWN'S**  
A Complete Lawn, Landscape, and Snow Removal Service  
Milwaukee 414-462-6670 Lake Country 262-695-8152

**Generations DENTAL**  
Jim Matuszberger, D.D.S. and Kelly Newman, D.D.S.  
Parish Members  
100 E. Capitol Dr. Hartland, WI 53029  
Office 262-369-2282  
[www.generationsdentalhartland.com](http://www.generationsdentalhartland.com)

**FOX BROS.**  
325 Oconomowoc Hillside  
262-367-2922  
1302 Oconomowoc Hillside  
262-567-8376  
Open 7 days a week 9am-6pm

**SPRUNG ARMSTRONG AIR**  
Heating, Sheet Metal & Well Pump Service  
7024 Main St., Merton  
538-1400  
Service • Repair & New Construction  
Residential & Commercial  
Parish Members

**Lake Country Eye Care**  
580 Hartbrook Dr. • Hartland, WI 53029  
Amber A. Dentz, OD - Parishioner  
[www.lakecountryeyecare.com](http://www.lakecountryeyecare.com)  
262-367-6610

**Brion Rothschild**  
Brion Collins  
Sophisticated financial planning and investment management solutions  
CFP® Professional & Parishioner  
262.326.6090 | [www.belr.com](http://www.belr.com)  
Brion E.L. Rothschild, LP is a registered investment advisor (Ira Rothschild Rothschild). Securities, when offered, are offered through an affiliate, Brion E.L. Rothschild Capital, LLC (Ira BELR Capital, LLC), member FINRA and SIPC, Certified Financial Planner Board of Standards Inc. (CFP Board) owns the CFP® mark in the United States.

