



*At St. Charles, all are invited to
meet Christ, know Christ,
love Christ and serve Christ.*

September 29, 2019

TWENTY-SIXTH SUNDAY IN ORDINARY TIME



26th Sunday
IN ORDINARY TIME

*Abraham said, 'If they will not listen to Moses and the prophets,
neither will they be persuaded if someone should rise from the dead.'"*

Luke 16:31



313 Circle Drive, Hartland, WI 53029 • 262-367-0800
www.stcharleshartland.com • email: parish@stcharleshartland.com



WELCOME TO ST. CHARLES

PASTOR: Fr. Ken Omernick

ASSOCIATE PASTOR: Fr. Nick Baumgardner

nbaumgardner@stcharleshartland.org

PASTORAL ASSOCIATE: 262-367-6704

Elizabeth Thompson, ethompson@stcharleshartland.org

Celiac Contact: Rose Thomas: rctihm@yahoo.com or 630-915-6601

PARISH OFFICE: 262-367-0800, Fax: 262-367-6960

Hours: Mon. - Fri., 8:00am- 4:00pm

Assistant to the Pastor:

Terrie Carew, Ext. 202, tcarew@stcharleshartland.org

Parish Receptionists:

Debra Hertel, Ext. 226, dhertel@stcharleshartland.org

Joann Papa, Ext. 226, jpapa@stcharleshartland.org

Parish Administrative Assistants:

Kathy Gillstrom, Ext. 200, kgillstrom@stcharleshartland.org

Dee Anne Hamer, Ext. 200, dhamer@stcharleshartland.org

DIRECTOR OF ADMINISTRATIVE SERVICES:

Marge Beck, Ext. 201, mbeck@stcharleshartland.org

DIRECTOR OF OPERATIONS:

Mike Cattani, Ext. 229, mcattani@stcharleshartland.org

DIRECTOR OF MAINTENANCE:

Tim Orzechowski, Ext. 217, torzechowski@stcharleshartland.org

COMMUNICATIONS SPECIALIST & BULLETIN:

Renee Krier, Ext. 224, rkrier@stcharleshartland.org

PARISH SCHOOL: 262-367-2040, school@stcharleshartland.com

PRINCIPAL:

Dan Garvey, Ext. 208, dgarvey@stcharleshartland.org

School Administrative Assistants:

Lisa Moehrke & Karen Dejewski, Ext. 206

ADVANCEMENT OFFICER:

Allison Caswell, Ext. 227, acaswell@stcharleshartland.org

DEPARTMENT OF CHILDREN'S FORMATION: 262-367-3277

Director of Children's Formation (PS-5):

Alicia Van Hecke, Ext. 205, avanhecke@stcharleshartland.org

Administrative Assistant:

Trish Gilchrist, Ext. 230, tgilchrist@stcharleshartland.org

DEPARTMENT OF STUDENT & YOUNG ADULT MINISTRIES:

262-367-3277 Ext. 221 or lifeteen@stcharleshartland.org

Director of Student & Young Adult Ministries: Nick Scanlan

Associate Director (EDGE 6-8): Corrie Christiaansen

Administrative Assistant: Laura Zgrabik

DEPARTMENT OF LITURGICAL MUSIC:

Director of Liturgical Music & Children's Choir Director:

Scott Currier, Ext. 225, scurrier@stcharleshartland.org

Associate Musician:

Kathleen Latzke-Daley, Ext. 215, kldaley@stcharleshartland.org

Liturgical Music Assistant:

Maria Notch, Ext. 215, mnotch@stcharleshartland.org

Liturgical Administrative Assistant:

Erika Rutley, Ext. 215, erutley@stcharleshartland.org

DIRECTOR OF ADULT & FAMILY MINISTRY:

Nancy Neuser, Ext. 210, nneuser@stcharleshartland.org

DIRECTOR OF STEWARDSHIP:

Nancy Van De Laarschot, Ext. 214,

nvandelaarschot@stcharleshartland.org

DIRECTOR OF DISCIPLESHIP:

Jess Panlener, Ext. 212, jpanlener@stcharleshartland.org

Eucharistic Celebrations

Saturday Mass of Anticipation: 5:00pm

Sunday Mass Times: 7:00am, 9:00am, 11:00am & 6:00pm

Communion Service: Monday ~ Friday: 6:30am

Weekday Mass:

Monday ~ Saturday: 8:30am

Sacrament of the Sick

The Anointing Mass is the second and fourth Friday at 8:30am or by appointment with Fr. Ken or Fr. Nick (scheduled with the Parish Office).

Morning Prayer: Monday ~ Friday: 7:30am, Saturday: 8:00am

Rosary: Monday ~ Friday: 8:00am, Tuesday Evening: 7:30pm

Perpetual Help Devotions: Tuesday after 8:30am Mass

Eucharistic Adoration

Mondays: 5:00-7:00pm with closing prayer (includes music)

Tuesdays: 6:30-8:00pm with 7:30pm Rosary and closing prayer

Fridays: 9:00am-3:00pm with the Divine Mercy Chaplet at 3:00pm followed by Benediction

Reconciliation

Saturday: 3:30pm - 4:30pm & Thursday: 5:00pm - 6:00pm

or by appointment (scheduled with the Parish Office)

Parish Membership

All Catholics are welcome to join our Parish and are asked to register on New Parishioner weekend, the first weekend of the month, or stop in at the Parish Office during office hours.

Planning to be Married?

Congratulations! Please notify St. Charles at least six months in advance. Weddings may be celebrated on Friday evenings and Saturdays at 11:00am and 2:00pm. Exceptions are made only with the permission of the Pastor. **Please contact Dee Anne Hamer at 262-367-0800 Ext. 222.**

Are you expecting or adopting a child?

St. Charles is honored to serve parents seeking Baptism for their child(ren). To find out more information about our preparation process and to schedule infant/child Baptisms, **please contact the Parish Office at 262-367-0800.**

Becoming FULLY Catholic

Are you unbaptized or baptized in a different Christian faith and considering becoming Catholic? Are you a baptized Catholic who did not receive the Sacraments of Reconciliation, Eucharist and/or Confirmation? St. Charles provides an adult formation process that will help you discover Jesus and His Holy Catholic Church. **Please contact Jess Panlener at 262-367-0800 Ext. 212.**

Small Groups

The Small Group movement at St. Charles offers you a way to authentically seek Jesus in small faith sharing communities. Small Groups gather in members' homes throughout Lake Country during Fall and Lent. For more information, **please contact Jess Panlener at 262-367-0800 Ext. 212.**

OUTREACH SERVICES TEAM: Terri Blazek: 262-367-7608,

jtblazek@wi.rr.com

Prayer Network: Pblavs@hotmail.com

St. Vincent De Paul: 262-367-0800 (Parish Office)

Need Home Communion: 262-367-0800 (Parish Office)

Mass Intentions for
the Week of September 29th



Sunday, September 29

- 7:00 am Living and Deceased Members of St. Charles
- 9:00 am † Mike Wolgram
- 11:00 am † Lucille Prince
- 6:00 pm Special Intention

Monday, September 30

- 8:30 am † Anita Misorski

Tuesday, October 1

- 8:30 am † Bob Williams

Wednesday, October 2

- 8:30 am † Steve Sobieski

Thursday, October 3

- 8:30 am † Alvin L. Rohde

Friday, October 4


- 8:30 am † Thomas Jungbluth

Saturday, October 5

- 8:30 am † Martha Karbler
- 5:00 pm † Max Horwatic

Sunday, October 6


- 7:00 am † Sam Bethia
- 9:00 am † Marta Rusznyak
- 11:00 am Living and Deceased Members of St. Charles
- 6:00 pm † Eileen Wilson



Wedding Banns

3rd Bann ~ Alyssa Jones & Jeffrey Plutte

2nd Bann ~ Mary Sauer & Michael Grabarczyk



Formed.org has been Redesigned!

On September 9, the Augustine Institute rolled out many improvements to the website. If you've never registered for Formed, now all you need to do is go to formed.org/signup and find St Charles through name, zip code or city. Parishioners who have already registered simply click 'Sign In', enter their email and click the link that is sent to that email address.

All of FORMED's incredible content remains available, with a newly designed user interface that makes navigating the experience even more enjoyable. The new search function makes it easier to find programs, movies, e-books, and audio. And, in addition to your web browser, iOS, Android, and TVOS, Formed is now available on Roku, Amazon Fire, Tizen and AndroidTV! You may also download content to watch offline. Contact parishcare@formed.org with any questions.

Sunday, September 29

- Fall Spirit Wear Try-on Weekend, Hallway, After all Masses
- CGS Session IA (Ages 3-5), Atrium, 8:45am
- "Little Lambs" Childcare, 3K Classroom, 9:00am & 11:00am Masses
- Child Formation Classes (Grades 3-5), Classrooms, 10:45am
- CGS Session IB (Ages 3-5), Atrium, 10:30am
- Baptism, CH, 12:45pm
- Emmaus Middle School Small Group, LTC, 5:00pm
- Life Teen Life Night, LTC, 7:15pm

Monday, September 30

- After School Care, PH, 3:30pm
- EDGE: Middle School Ministry, BR/LTC/PH/CH, 6:30pm

Tuesday, October 1

- All School Daily Mass, CH, 8:30am
- Bereavement Ministry Meeting, BR, 9:30am
- Tuesday Breakfast Club, BR, 9:30am
- St. Vincent de Paul Food Pantry Open, Lawn Street, 10:00am-Noon
- Circle of Love Tag Assembly Meeting, BR, 12:30pm
- After School Care, PH, 3:30pm
- Cub Scouts Committee Meeting, PH, 6:30pm
- Home & School Association Meeting, MR, 6:30pm
- Knights of Columbus Officers Meeting, BR, 6:30pm
- ACTS29 (Student Leadership) Formation Session, LTC, 6:45pm

Wednesday, October 2

- Knit/Crochet Ministry, BR, 10:00am
- Jesus & Me Pumpkin Farm Trip, Ebert's Farm, 1:00pm
- After School Care, PH, 3:30pm
- Children's Choir Rehearsal, CH, 3:30pm
- CGS Session IC (Ages 3-5), Atrium, 4:00pm
- Hand Bell Choir Practice, CH, 5:30pm
- CGS Session ID (Ages 3-5), Atrium, 6:00pm
- Child Formation Classes (Gr. 2-5), Classrooms, 6:00pm
- Christian Women Salad Supper Potluck, BR, 6:00pm
- Adult Choir Practice, CH, 7:00pm

Thursday, October 3

- Men's Morning Group, BR, 5:30am
- Staff Meeting, BR, 10:30am
- After School Care, PH, 3:30pm
- Building & Grounds Meeting, IMC, 5:00pm
- Boy Scout Troop Meeting, PH, 6:30pm
- Magis (Small Group Leaders), CH/LTC, 6:30pm
- Prayer Commission Meeting, CR, 6:30pm

Friday, October 4

- Morning Mom's Group, LTC, 10:00am
- After School Care, PH, 3:30pm
- St. Francis de Sales Seminar Annual Dinner, WI Center (Milwaukee), 5:00pm
- Wedding Rehearsal, CH/CR, 5:30pm
- Blessing of the Pets, Front Porch, 6:00pm-6:15pm

Saturday, October 5

- Baptism Rehearsal, CH, 10:00am
- Baptism Rehearsal, CH, 11:00am
- Wedding, CH/CR, 2:00pm
- New Parishioner Registration, PO, After Mass
- Father/Daughter Dance, BR, 6:30pm

Sunday, October 6

- Doughnut Sunday, PH, After Morning Masses
- New Parishioner Registration, PO, After All Masses
- SVdP SHARE Sunday, Narthex, All Day
- CGS Session IA (Ages 3-5), Atrium, 8:45am
- "Little Lambs" Childcare, 3K Classroom, 9:00am & 11:00am Masses
- Becoming Fully Catholic, MR, 10:15am
- Child Formation Classes (Grades 1 & 3-5), Classrooms, 10:45am
- CGS Session IB (Ages 3-5), Atrium, 10:45am
- Baptism during Mass, CH, 11:00am
- Baptism, CH, 12:45pm
- Emmaus Middle School Small Group, LTC, 5:00pm
- Life Teen Life Night, LTC, 7:15pm

Abbreviation Key

- | | |
|---------------------------------------|--------------------------|
| BR = Borromeo Room | MD = Music Dept |
| CH = Church | MR = Music Room (School) |
| CHPL = Chapel | PH = Parish Hall |
| CR = Conference Room | PO = Parish Office |
| HFRC = Holy Family Rec Center | SK = Staff Kitchen |
| IMC = Instructional Media Center | SR = Science Room |
| LTC = Life Teen Cafe (Student Lounge) | TL = Teachers' Lounge |
| CGS = Catechesis of the Good Shepherd | |



Spend 15 minutes every day in prayer with Scripture!



*"Increase our faith."
Luke 17:5*

- How do you approach testifying of Jesus – with fear or shame, or with confidence and joy? Pray for God to give you the courage, and opportunities to testify!
- Disciples can make no claim on God's graciousness, for it is a free gift. Do you merely do your duty, or go above what Jesus asks of us?

Readings for the Week of September 29th

Sunday: Am 8:4-7/Ps 113:1-2, 4-6, 7-8 [cf. 1a, 7b]/1 Tm 2:1-8/ Lk 16:1-13 or 16:10-13
Monday: Ezr 1:1-6/Ps 126:1b-2ab, 2cd-3, 4-5, 6 [3]/Lk 8:16-18
Tuesday: Ezr 6:7-8, 12b, 14-20/Ps 122:1-2, 3-4ab, 4cd-5 [1]/ Lk 8:19-21
Wednesday: Ezr 9:5-9/Tb 13:2, 3-4a, 4befghn, 7-8 [1b]/Lk 9:1-6
Thursday: Hg 1:1-8/Ps 149:1b-2, 3-4, 5-6a and 9b [cf. 4a]/Lk 9:7-9
Friday: Hg 2:1-9/Ps 43:1, 2, 3, 4 [5]/Lk 9:18-22
Saturday: Zec 2:5-9, 14-15a/Jer 31:10, 11-12a, 13 [cf. 10d]/ Lk 9:43b-45
Next Sunday: Am 6:1a, 4-7/Ps 146:7, 8-9, 9-10 [1b]/1 Tm 6:11-16/Lk 16:19-31

READ. REFLECT. RESPOND. REST.



Cutout and keep in your bible for reference!



**"Little Lambs Childcare"
Is Looking For Paid Adult Leaders!**

Jesus said, Let the children come to me.

St. Charles is presently hiring Adult Leaders for our "Little Lambs" childcare ministry during the 9 and 11 am Masses on Sunday mornings as well as some evening and weekend events and programs.

"Little Lambs" serves children walking through age 4 in the St. Charles 3K classroom. Our childcare workers provide parents a safe, loving, faith filled, fun environment for their littlest ones while they attend mass nearby or participate in some select evening or weekend events or training sessions. To apply contact Marge Beck in the parish office at 262-367-0800 or mbeck@stcharleshartland.org.



CYM VOLLEYBALL

Did you know that St. Charles has a co-ed CYM (Catholic Youth Ministry) volleyball team? If you are a boy or girl in grades 9-12 and are interested in playing volleyball, or you would like to coach a team, please contact our Life Teen office at 262-367-2532.

Bulletin Advertisers of the Week

Please support our advertisers!

CARPET PLUS, INC.

We Bring the Showroom to You!

(414) 573-0105

Dan Taylor, Parish Member

Vicki Marciniak
 When it comes to your home, it's more than just business, it's personal.
 Cell: (414) 243-5584
vmarciniak@firstweber.com
www.VickiMarciniak.FirstWeber.com

<p>PARISH SUPPORT FOR THE WEEKEND OF AUGUST 18TH</p> <p>FISCAL YEAR BEGAN JULY 1ST</p>	2019-2020	2018-2019
	Envelopes..... \$15,139.22 Offertory.....\$2,077.81 Weekend Total..... \$17,217.03 YTD.....\$224,924.64	Envelopes..... \$18,952.50 Offertory.....\$1,926.50 Weekend Total..... \$20,879.00 YTD.....\$234,450.84

ST. VINCENT de PAUL SOCIETY



FOOD PANTRY NEEDS: cooking oil, meat based canned pasta, canned chicken, beef stew, chili and liquid dish soap.

SHARE SUNDAY is next week! SHARE SUNDAY is St. Charles' designated monthly food and fund drive to benefit the SVdP food pantry. Your charitable gifts of food and hygiene items may be placed in the SE corner of the church narthex. If you prefer to help us financially, envelopes for your needed cash and checks are located at the SVdP collection boxes in the narthex and next to the hall sign-up shelf. If your donation is intended for the food pantry, please indicate that on the envelope or memo portion of your check. Hartland has many low-income and elderly residents who need to use our food pantry to feed their families. Without your donations and cash to help offset our monthly expenses of rent, utilities, and insurance the food pantry would not remain open. God bless all of our benefactors, patrons, those who pray for us, and our landlord who has provided SVdP with a place to feed the hungry in our community.

The pantry is located at 229 Lawn Street, Hartland, and is open Tuesday mornings between 10 am and noon. It is also open on the second and fourth Tuesday evening of each month between 5:30 pm and 7 pm. If you need other assistance or are interested in joining our ministry, please contact SVdP at 262-367-0800.



Remember To Smile First

Don't forget, when you purchase items from Amazon.com, type smile.amazon.com instead and you'll raise money for St. Charles. We call this "effortless fundraising."

Haven't set up your account yet? Go to <https://smile.amazon.com> and designate St. Charles Catholic Parish and School! Amazon will donate .5% of the purchase price of your items to St. Charles School. Thank you in advance for your support.



From Sept. 25th to Nov. 3rd, 40 Days for Life Campaigns will take place on the sidewalks outside abortion and birth control centers all over the world. Wisconsin vigils will take place this fall in Madison, Milwaukee, La Crosse, Sheboygan, Green Bay, and a number of smaller communities. For information on vigils in your area visit www.40daysforlife.com or join the St. Charles Respect Life Ministry on Tuesdays from noon until 1:00pm. If you need a ride, please be at the church parking lot at 11:30am and parishioners can carpool. Any questions, please call Ruth Chadwick 262-367-8976 with questions.

Men Can Still Join Our Thursday Morning Men's Group

Come enjoy the comradery of the men's group and deepen your faith! The Thursday Morning Men's Group is on **Thursdays from 5:30 am to 7 am** with a video presentation from Fr. Larry Richards' nationally acclaimed "Be A Man!" series. Fr. Larry is a dynamic speaker who appears regularly on EWTN TV and is a nationally sought after speaker, retreat and Catholic conference director!

If you are interested in joining us and are NEW to the group, please sign up on the parish sign-up shelf or contact Jim Dunn at 262-751-7345 or jpddunn@gmail.com.

You are cordially invited to the
St. Charles 7th Annual Ministry/Volunteer Appreciation Celebration
 Join us **Saturday, October 26th**
 in the St. Charles Borromeo Room
 following the 5:00 pm Mass
 for heavy hors d'oeuvres, beverages and desserts

This is our opportunity to say THANK YOU for all you do to support the staff and ministries here at St. Charles. Please **RSVP by Oct. 23rd** on the sign-up shelf or call Nancy Van De Laarschot at 262-367-0800 Ext. 214.

Preschoolers... Come With Us to the Pumpkin Patch



Wednesday, Oct. 2nd (1:00 pm - 2:00 pm)
at Ebert's Greenhouse Village in Ixonia
Fee: \$7 per child (all adults are \$3)

Join us on an exciting fun-filled trip to Ebert's Greenhouse Village Pumpkin Farm! This opening session field trip of the popular "Jesus and Me" Group has become a memorable fall tradition for St. Charles preschoolers, their parents and grandparents! This year's theme is based on the story, "**Earl The Squirrel**". Enjoy the hayride, story, craft and straw maze. The fee includes all activities, a "Jesus and Me" gift packet and a hand-picked pumpkin! **Registration forms are on the information wall and on the parish website.**

FATHER Daughter DANCE

Grades 3K-8th

**October 5th from 6:30-8:30 pm
in the Borromeo Room**

Home & School Association is excited to bring this special event to St. Charles Parish & School this year. The cost is \$30 per family, and money raised will go toward new technology devices for the STEM lab. **All Parish families are invited** and should contact Brandy Kukurba at 773-759-1783 to RSVP. **Last day to RSVP is Sunday, Sept. 29th.**

Blessing of The Pets

**A St. Francis Catholic tradition
Friday, Oct. 4th from 6:00 pm - 6:20 pm
On the front porch at St. Charles Church**

St. Francis of Assisi loved all God's creatures, especially animals. So bring your pet(s) to St. Charles on his feast day (Oct. 4th) for a special blessing. People and their pets of all varieties and ages are welcome - however, please only bring friendly, socialized pets!



Note: a responsible adult must bring and control their pets. All dogs must be on leashes.



Praying the Rosary for America...

As human efforts fail to solve America's key problems, we turn to God, through His Holy Mother, asking His urgent help.

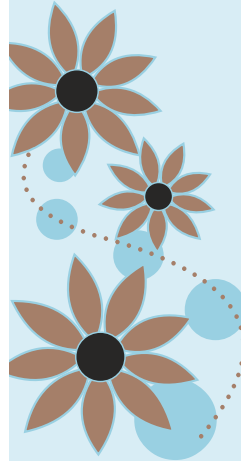


Our Lady of Fatima Requested: "PRAY THE ROSARY"

Please join fellow parishioners in the 2019 Public Square Rosary Crusade (one of 20,000 plus rallies throughout the United States.) Our nation is in great need of prayer, repentance and conversion. We ask God to save America through the Rosary of His Most Holy Mother.

Please join us in praying for our nation on Saturday, Oct. 12th at Noon. The local Public Square Rosary Rally will take place at 163 E. Capitol Drive in downtown Hartland.

Contact Carol Betzhold at 262-719-7155 for more information.



Join us for a Christian Women Salad Supper Pot Luck

Wednesday, October 2nd
6:00 - 9:00pm
in the Borromeo Room

A-M Please bring a salad to share
N-Z Please bring a dessert to share

Please invite your mother, adult daughters and friends to join you!



RSVP to Nancy Van De Larschot at nvandelaarschot@stcharleshartland.org



St. Charles Night at Culver's in Hartland

Monday, Oct. 14th from 5:00-8:00 pm
Mention that you are with St. Charles and the School receives 10% of that evening's sales! Thanks for your support!



Changes to our Prayer Network

In order to better meet the needs of those who have requested prayers, we are making some changes to how you may submit prayer requests to the Parish Prayer Network.

If you have a prayer request, you may either:

1. Write your prayer request down in the Adoration Prayer Intention Book that is on the sign-up shelf. Your intention will be included in the general prayers listed on the Prayer Network Sheet; or
2. You may email your request to Pat Blavat at Pblavs@hotmail.com and she will include your prayer request on the prayer sheet she emails to the Prayer Network on Monday.

If you want to receive a copy of the Prayer Network Sheet, please send Pat Blavat an email (listed above) requesting to be added to the list. The email list is confidential, so your email address will not be seen or shared with anyone.

If you have an emergency prayer request, please email Pat Blavat at Pblavs@hotmail.com; and she will send out a separate email with the emergency prayer request. We are looking for a replacement for Dawn (our former emergency contact), so if you're interested please contact Pat Blavat.



Events & News at St. Charles Parish School

Father/Daughter Dance: This is a final reminder that our first annual event will be held on October 5 from 6:30-8:30 pm! Students in 3K-8th grade are invited to attend. The cost is \$30 per family, and money raised will go toward new technology devices for the STEM lab. Parish families should contact Brandy Kukurba at 773-759-1783 to RSVP. **Last day to RSVP is Sunday, Sept. 29th!**

Want to volunteer? There are many volunteer opportunities available for the 2019-2020 school year. Please take a look at all of the openings we have by visiting the school's website. Help is needed everyday in the lunch room and health room. If you are available during the school day, we would love your assistance!

Interested in SCRIP? You can purchase SCRIP online or after all Masses in the Parish office. SCRIP gift cards are available in the Parish Office and are listed on the school website under SCRIP/SCRIP Order Form. When you buy products with SCRIP gift cards, you support our parish and school! If you have any questions, please contact the Parish Office.

Soles for Catholic Education Walk: The annual Soles for Catholic Education Walk will be held on Saturday, October 19 at 8:30 a.m. If you haven't signed up yet, walk registration is \$10 per person. Please register for the two-mile walk and make a donation. Anyone who signs up before October 9th will receive a t-shirt. All donations raised will stay here at St. Charles! Find out more information and register at www.catholicschoolswalk.org.

We are holding our annual Penny Wars this year to help fundraise, as well! Bring in your spare change between October 4-10 to help benefit St. Charles!

We are also collecting all types and sizes of gently-used shoes for the Society of St. Vincent de Paul. Rubber band pairs together and leave them in boxes set up near the school office. Thank you for your generosity!



SCRIP Can Help with Halloween

Use SCRIP to purchase your costume or candy for Halloween. Remember when you buy products with SCRIP gift cards, you support our parish and school! You can purchase SCRIP online or after all Masses in the Parish Office. SCRIP gift cards are available in the Parish Office and are listed on the school website under SCRIP/SCRIP Order Form. If you have any questions, please contact the Parish Office.

Fr. Nick Baumgardner has been visiting classrooms!

Fr. Nick has been stopping by each classroom to greet students and see what they're learning so far this year. In Mrs. Smet's classroom, 7th graders discussed writing their personal narratives, and Fr. Nick spoke about writing his own spiritual narrative when he entered seminary.



FALL SPIRIT WEAR SALE! Sept. 27th - Oct. 7th

Again this year, with the Fall Spirit Wear Sale is a **TRY-ON-WEEKEND at St. Charles in the Parish Hallway, Sept. 28th & 29th after all Masses.**

All apparel styles will be available to try on for accurate sizing. If you miss this opportunity please stop at Mid-City Sports to also try on apparel. Mid-City is located at N55 W29505 County Road K, Hartland.

All orders must be placed via the parish or school website through Mid-City Sports. This is a fundraiser and Mid-City Sports will generously donate a portion of each sale back to St. Charles Parish and School. Thank you Mid-City Sports!

The sale will be held until midnight on Monday, Oct. 7th! Orders cannot be accepted after that time. Delivery is expected in early November. School families and parishioners will be contacted by Mid-City Sports regarding pick up. Just a reminder that all sales are final.

If you have any questions regarding the sale, please contact Renee Krier, St. Charles Communication Specialist, at 262-367-0800 Ext. 224 or rkrier@stcharleshartland.org.

Please note: This is the only Spirit Wear Sale before Christmas.

Circle of Love



This weekend you have the opportunity to make Christmas brighter for a family or person in need. If you know of a family or person who has hit hard times due to a job layoff or serious illness/injury, please consider sponsoring them this Christmas season. **To be a sponsor, we do require that you are a registered parish member of St. Charles.** Sponsor sheets can be found on the parish sign-up shelf. When completed, place in the Gift Box marked "Circle of Love" also located on the sign-up shelf. **All sponsor sheets are due back by Wednesday, Oct. 16th.**

If you have any questions, call Kathy Gillstrom at 262-367-1075 or Kathy Romaine at 262-691-3684.

Volunteers: Our 1st meeting is Tuesday, Oct. 1st at 12:30 pm in the Borromeo Room.

2019 WOMEN OF CHRIST® Conference

*Come and see...
He delights in you!* JOHN 4:29

SATURDAY, NOVEMBER 9
9:00 AM - 5:00 PM | WASHINGTON COUNTY FAIR PARK
DOORS OPEN AT 7:00 AM | 3000 PLEASANT VALLEY RD. | WEST BEND, WI

4PM MASS OF ANTICIPATION | CONFESSIONS | ADORATION
SPEAKERS | VENDOR MARKET (CLOSED DURING MASS)
EUCCHARISTIC PROCESSION | ROSARY PROCESSION
WWW.WOMENOFCHRIST.NET | 262.384.8414

Come to the 11th annual WOMEN OF CHRIST® CONFERENCE on **Saturday, November 9th** at the Washington County Fair Park in West Bend and experience the magnitude of God's love and delight! You'll hear from inspirational speakers Kimberly Hahn, Steve Ray, Derya Little and our dear friend, Bishop Don Hying. Their stories of conversion and deep faith will affirm the Catholic Church as your home. You will draw closer to Our Blessed Mother, whose tender love will lead you to Her Son. Reconciliation and Adoration will be available throughout the day, as well as a vendor market area. Conference concludes with 4:00 pm Mass of Anticipation celebrated by Archbishop Jerome Listecky.

Registration as a group (through St. Charles Parish) allows you to receive the group discount rate of \$40. Registration forms are available on the parish information wall. **Registration is due by Oct. 7th.** We are currently looking at transportation options (bus/carpooling). Conference sells out quickly so sign up soon! For more information visit: <https://womenofchrist.net/>.

Kettle Moraine Council 3562 will be conducting their annual Life Savers for Life Drive on October 12th & 13th after all Masses on the front porch.
All proceeds benefit local Lake Country Respect Life Charities.

Knights of Columbus Kettle Moraine Council 3562 Annual Columbus Day Banquet

Sunday October 13th in the Borromeo Room
Beverages served 4:00pm; Dinner at 5:15pm.
Awards and Raffles following dinner.

You are invited to an all you can eat dinner including salad & garlic bread, pasta, sauce, meatballs, all expertly prepared by Chef Dave Famularo following authentic Sicilian recipes. Beer, wine, soda, coffee & milk included. Please bring a dessert to pass. Donation \$10.00. The evening includes door prizes and entertainment by Dick Strauss & Jim Schoenhaar. **All are welcome.** Proceeds benefit local Lake Country Charities. Tickets are available from Sam Vallone, 262-691-1074. **No tickets sold at the door. No tickets sold after Wednesday, October 9th.** Please mention **Gluten Free Pasta** if needed at the time of ticket purchase.

Aiming for Christ Event
Saturday, October 19th
Waukesha Gun Club at N22 W23170 Watertown Road

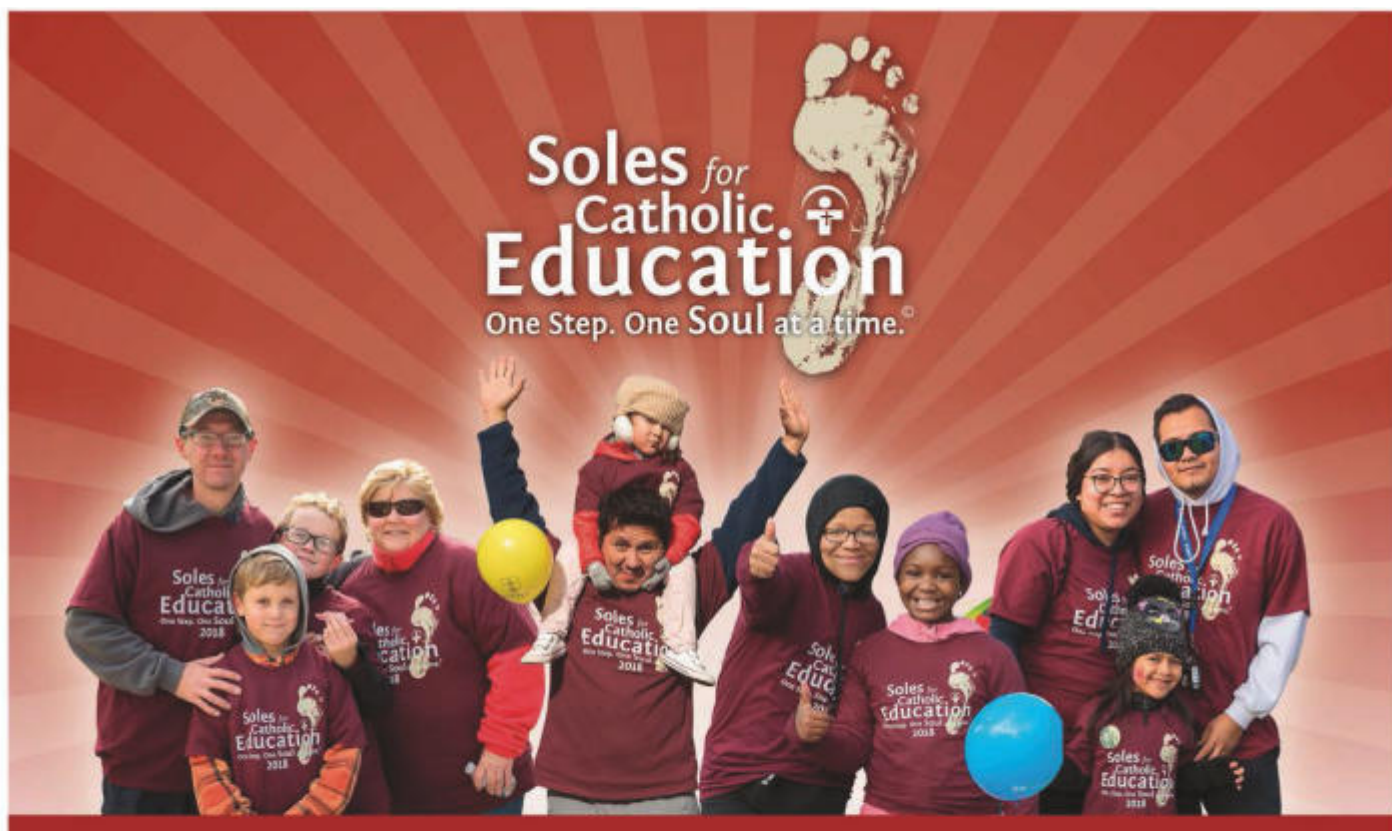
Gentlemen of all ages and boys age 8 and older please mark your calendar for the 2019 Aiming for Christ event.

Build on your faith and enjoy camaraderie in the great outdoors. We are holding our costs the same as last year at \$40 per person or \$200 per 5 'man' teams.

The agenda remains the same: Mass at 7:00 am with Father Philip Schumaker, light breakfast and lunch, sporting clays and a 5-stand flurry, youth activities, event prizes and shotgun raffle, virtue talk and social all ending by 2:00 pm.

This year we have added two exciting new items: There will be youth competition events and also every participant will be entered into a raffle and eligible to win a Remington 870!

Please take a minute now and register at: <https://menofchrist.net/cem/register/integrated/78>. When you register for the event you can also provide the names in your group. Once on the site, in the PARISH field, enter your Squad Leader or "Single" to be assigned to a squad. Any questions, contact Michael Schulze at mkschulze10@gmail.com



KEEP THOSE DONATIONS COMING IN!

Support our school by collecting donations for the **7th annual Soles for Catholic Education Walk**.

REMEMBER: Donations RAISED by our school STAY at our school!

Cash and check donations can be brought to the office or donate online at catholicschoolswalk.org.



For more information, or if you have any questions, please contact the School Office at 262-367-2040 or school@stcharleshartland.org.





Come Join the Christ Child Society!

Consider becoming a member of the Milwaukee Chapter of the Christ Child Society. Join us Thursday, Oct. 3 from 9:15-11:15 a.m. at St Anne's Home, 3800 N 92nd St. We'll show you how we assemble clothes and personal items for babies in need and for children in transition to foster care. Then we'll have coffee and snacks and tell you about how you can help others through our volunteer organization. Call 414-540-0489 to let us know if you can attend or visit www.ChristChildMilwaukee.org for information about our organization.

UNPLANNED...THE MOVIE

Monday, September 30, 6:30pm

St. Teresa of Calcutta Parish Center

Francis Hall in the lower level (elevator available)
W314N7462 State Rd 83, North Lake, WI 53064

Unplanned is the inspiring true story of one woman's journey of transformation. All Abby Johnson ever wanted to do was help women. As one of the youngest Planned Parenthood clinic directors in the nation, she was involved in upwards of 22,000 abortions and counseled countless women about their reproductive choices. Unplanned is the most important movie you'll ever see on the most controversial issue of our time. No one will leave this film unmoved by Abby's journey

Please RSVP if you are interested in attending to the office at 966-2191. The movie is FREE. We need a count for how many seats to set up. But please come at the last minute! Don't miss this opportunity to learn more about "women's health" and the abortion agenda. We will have refreshments available.

This movie is sponsored by the St. Teresa of Calcutta Respect Life Committee. (This movie is rated "R" for graphic images. Children under 17 must be accompanied by a parent.)

St. Charles will also be showing this movie in the next month or so. Please look in future bulletins for more information.

The Catholic Study Club

Women belonging to any Catholic parish in Waukesha County are invited to the next Catholic Study Club luncheon. Our next luncheon will be on Tuesday, October 8th. Following the luncheon, Diane Niesnas, member of St. William Parish will speak on "A Family's Faith Strengthens Despite Adversity." Reservations are required and due by Sunday, September 29th. Please call Rita at 262-547-4827 to reserve your spot.



Permanent Diaconate Fall Sessions

Those considering the Diaconate first reflect on their qualities and qualifications to decide whether they are suited to serve. For those men ready to pursue their calling (and spouses, if married), the Archdiocese is offering a series of sessions to help men discern the call to the Permanent Diaconate.

Waukesha Area

Fall Dates: Wednesdays, 6:30 to 8:30 pm on Oct. 16, 23 and 30, Nov. 6, 13 and 20

Location: St. William, 440 N. Moreland Blvd., Waukesha, WI 53188 (Vercelli House Transformation Place)

Facilitator/Registration: Manuel Maldonado: maldonadom@archmil.org or 414-758-2207

A CONFERENCE FOR ADULTS IN THEIR 20'S AND 30'S


INHERITANCE 2019

STEP INTO THE TRUE, GOOD AND BEAUTIFUL

SATURDAY
10.12.19
MILWAUKEE, WISCONSIN

Our world is often marked by pain, heartbreak and loneliness. It can be difficult as a 20- or 30-something to navigate, while holding down a social life, relationships and work. But, we believe life is a gift! At Inheritance 2019, we invite you to step into your inheritance as a son or daughter of God, who loves you and has a plan for you. Inherit the true, good and beautiful life.

WWW.INHERITANCE2019.COM

 **BREWCITYCATHOLIC.COM**
Brew City Catholic | @brewcitycatholic

TODD WANGERIN ELECTRIC, Inc.

Free Estimates - Licensed - Insured
Over 20 years experience

Todd Wangerin 262-719-4411
twelectric4411@att.net

Falbo Bros. Pizzeria

Small Business Specials & Catering
\$5.00 lunch special - 2 slices and a soda
Extensive Delivery Range

418 Merton Ave., Hartland 262-367-2700

Alan Giuffre, S.C. CERTIFIED PUBLIC ACCOUNTANT

Alan Giuffre, CPA, PFS • (say "JU-FRAY")
E-mail: alan@alangiufrasc.com
Website: www.alangiufrasc.com

262.367.4TAX (4829) FAX 262.367.9098
3945 HICKORY KNOLL RD
HARTLAND, WI 53029-9362

BIEBEL'S True Value.

Hardware & Rental
HARTLAND
580 Hartbrook Dr. • 369-1070

Oconomowoc Landscape Supply & Garden Center

Landscaping Supplies • Annuals
Perennials • Trees & Shrubs
Increase your Home's Value Enjoy a Beautiful Landscaped Yard

262-567-1777
www.olandscape.com • Corner of K & 67 at bypass

HARTLAND INN

Fine Food & Cocktails

Private Rooms For All Occasions
www.foodspot/hartlandinn.com

367-6800
Downtown Hartland Margrit Meier

Complete line of Hispanic & American Groceries.
We specialize in fresh corn tortillas, Mexican bakery and our famous El Rey Tostadita Chips.

Serving Milwaukee Since 1978

El Rey 916 S. Cass E. Chicago Dr. Milw. WI 53204 414-943-1640	El Rey Family Market 3200 W. Oklahoma Ave. Milw. WI 53219 414-541-5200	El Rey Plaza 3524 W. Sunnyside St. Milw. WI 53215 414-643-1816	El Rey Food Mart 1323 W. Sunnyside St. Milw. WI 53204 414-388-7786
--	---	---	---

Holzauer, Hewett & Barta s.c. www.hhortho.com

Orthodontic Care For Children And Adults

Daniel Holzauer DDS MS | Charles Hewett DDS MS | Joshua Barta DDS MS

520 Hartbrook Dr., Hartland 262-567-7076
2316 N. Grandview Blvd, Waukesha 262-547-6365
10225 W. Capitol Dr., Wauwatosa 414-463-5700

BUNZEL'S OLD FASHIONED MEAT MARKET

Fresh Custom Cut Choice Meats
Party Trays • Catering

Thank You For Supporting A Family Tradition
9015 W. BURLEIGH 873-7960
www.bunzelmeats.com

Lake Country Financial Group LLC

Steven R. Seibel, CLU, ChFC, LUTCF
Financial Advisor
(262) 646-4115

Securities offered only through Citigroup Investments, Inc., a registered broker-dealer and member FINRA/SIPC. Lake Country Financial Group LLC and Citicorp are separate and unaffiliated entities. Advisory services offered through Citigroup Advisors, Inc., a registered investment advisor.

FOOT & ANKLE Associates of Wisconsin

Parish Member
Dr. Amy Galati

Call: (262) 542-3779
www.footandanklewi.com

catholicmatch Wisconsin

CatholicMatch.com/WI

NEVER MISS A BULLETIN!

Sign up to have our weekly parish bulletin emailed to you at www.parishesonline.com

Pat's Heating & Air Conditioning

30 YEARS OF EXCELLENCE

262-567-7499
OCONOMOWOC
www.patsheating.com

RENEU HEALTH & MEDSPA

Office of Dr. Jill Wohlfiel
Complete Medispa Menu of Services
W359 N 5002 Brown St., Suite 208
Oconomowoc, WI 53066
www.reneuhealth.com • 262-560-1920

WE'RE HIRING AD SALES EXECUTIVES

• Full Time Position with Benefits
• Sales Experience Preferred
• Paid Training
• Overnight Travel Required
• Expense Reimbursement

CONTACT US AT careers@4LPI.com
www.4LPI.com/careers

Hartland Village Mart

301 E. Capitol Drive • Hartland

CITGO

- Fresh Bakery Daily
- Pizza • Sandwiches
- Groceries/Propane
- Beer and Beverages

Fast & Friendly Open Daily 5 a.m.-10 p.m. Call Ahead 367-8099

TOWN BANK

AWINTRUST COMMUNITY BANK

800-433-3076
www.townbank.us

EZ WINDOW CLEANING

www.e-zwindowcleaning.com
262-349-9411

MERTON FEED CO.

Bird - Horse - Dog Food, Etc.
Softener Salt - Lawn Seed & Fert.

www.mertonfeed.com
262-538-1250

R&R INSURANCE

Dan Wolgram Parish Member
Rick Kalscheuer Parish Member

800.566.7007 | myknowledgebroker.com

Seven Seas on Nagawicka Lake

Casual & Fine Dining
Sunday Brunch

sevenseaswi.com 262-367-3903

MICHAEL J. FINN S.C.
ATTORNEY AT LAW
PARISH MEMBER

262-367-8485
www.michaelfinnlaw.com
163 E. Capitol Dr., Hartland, WI 53029

VISU-SEWER, INC.
262-695-2340

Professional Sewer Inspection, Maintenance and Rehabilitation Services

Parish Members
www.visu-sewer.com

DON CULL EXCAVATING

W298 N9248 Center Oak Rd
Septic & Mound Systems Grading

966-7038
MPRS 221589

LAKE COUNTRY REAL ESTATE
Scott Heyerdahl

262-719-6970
Sheyerdahl@firstweber.com

Advanced Disposal

• Residential • Commercial
• Construction • Recycling • Roll Off Rentals
(262) 367-6040

CHARLES ST.
St. Charles School... We choose Christ in learning, living, & values in the light of our faith.

262-367-2040
www.stcharlesschoolhartland.com

JENSON MOTORS Auto - Truck Repair

Hours: Mon-Fri 7:30-5:30
Proprietor: Guy Jenson
262-367-5556
364 Cottonwood Ave., Hartland, WI

Hartland Terrace Assisted Living

- RN Lead 24-Hour Elite Care Team
- Full Continuum of Care • Memory Care
- All Inclusive Pricing • Private Studios
- Family Centered Care Model

327 North Avenue • Hartland | 262-369-4391
www.hartlandterrace.com

PATRIOT PLUMBING, INC.
COMMERCIAL AND RESIDENTIAL

www.patriotplumbingwi.com
Earl Cull • 262-966-2284
MP221857 107112RT 107113RMT

Culver's
701 Industrial Ct., Hartland
262-367-5800

North Lake Family Dentistry
Patty Erickson, D.D.S.

W315N7641 Hwy 83, North Lake, WI
Phone: 262.966.7668
www.nlakefamilydentistry.com
northlakefamilydentistry@gmail.com

KLINK'S KARPET
Hartland's Floor Covering Center
Reasonable - Reliable
Carpet, Vinyl, Ceramic, Wood
107 North Ave. 367-4670
Hartland, WI Parish Member

Where your destination begins
Cruise Specialist
Disney Specialist
Mexico, Caribbean, Hawaii
Jamie Lovejoy (262) 844-0881
www.jamielovejoytravel.com

GOLD MEDAL CARPET & UPHOLSTERY CLEANERS LLC

Your Parish Carpet Cleaner
Call Jim at: 414-254-4210
920-994-4003

HERITAGE LAKE COUNTRY
We Can Help You with the Next Step!

2975 Village Square Drive, Hartland, WI 53029
262-367-2975 • heritagesenior.com

Brion Rothschild
Sophisticated financial planning and investment management solutions
CFP® Professional & Parishioner
262.326.6090 | www.belr.com

DAVE PERRY Heating & Cooling

Proudly Serving the Lake Country Area for more than 20 years
Heating • Air Conditioning • Geothermal
New Construction • Replacement
262.966.1959
www.daveperryheatingandcooling.com

Henry & Diane Barvinski, Co-Owners
ECHO LAWN'S

A Complete Lawn, Landscape, and Snow Removal Service

Milwaukee 414-462-6670 Lake Country 262-695-8152

Generations DENTAL

Jim Maustenberg, D.D.S. and Kelly Newman, D.D.S.
Parish Members
www.generationdentist.com

FALBO BROS.

325 Oconomowoc
414-943-1816
262-367-2922
1302 Oconomowoc St.
Oconomowoc, WI
262-567-8376

Open 7 days a week 9am-6pm

SPRUNG ARMSTRONG AIR

Heating, Sheet Metal & Well Pump Service
7024 Main St., Merton
538-1400
Service • Repair & New Construction
Residential & Commercial
Parish Members

Lake Country Eye Care

580 Hartbrook Dr. • Hartland, WI 53029
Amber A. Dent, OD - Parishioner
www.lakecountryeyecare.com
262-367-6610

Brion Rothschild
Sophisticated financial planning and investment management solutions
CFP® Professional & Parishioner
262.326.6090 | www.belr.com

