

December 23, 2018  
FOURTH SUNDAY OF ADVENT

## Sacrament of Baptism



Joseph Gregory Halvorson, son of  
Andrew and Kimberly Halvorson



Vera Mary Stellmacher, daughter of  
John and Laura Stellmacher



Fulton Xavier Senglaub, son of  
Michael and Elizabeth Senglaub



Ruby Leota McClendon, daughter of  
Clint and Maggie McClendon



Nikolai Selin Mazeika, son of  
Tariel and Kerrie Mazeika



Knox Porter Ehnert, son of  
Jeffrey and Sara Ehnert

Fourth week of  
*Advent*



# WELCOME TO ST. CHARLES

## Eucharistic Celebrations

**Saturday Mass of Anticipation:** 5:00pm

**Sunday Mass Times:** 7:00am, 9:00am, 11:00am & 6:00pm

**Communion Service:** Monday ~ Friday: 6:30am

**Weekday Mass:** Monday ~ Saturday: 8:30am

## **Sacrament of the Sick**

The Anointing Mass is the second and fourth Friday at 8:30am or by appointment with Fr. Ken or Fr. Behling (scheduled with the Parish Office).

**Morning Prayer:** Monday ~ Friday: 7:30am, Saturday: 8:00am

**Rosary:** Monday ~ Friday: 8:00am, Tuesday Evening: 7:30pm

**Perpetual Help Devotions:** Tuesday after 8:30am Mass

## **Eucharistic Adoration**

Mondays: 5:00-7:00pm with closing prayer (includes music)

Tuesdays: 6:30-8:00pm with 7:30pm Rosary and closing prayer

Fridays: 9:00am-3:00pm with the Divine Mercy Chaplet at 3:00pm followed by Benediction

## **Reconciliation**

**Saturday: 3:30pm - 4:30pm** & **Thursday: 5:00pm - 6:00pm**  
or by appointment (scheduled with the Parish Office)

## **Parish Membership**

All Catholics are welcome to join our Parish and are asked to register on New Parishioner weekend, the first weekend of the month, or stop in at the Parish Office during office hours.

## **Planning to be Married?**

Congratulations! Please notify St. Charles at least six months in advance. Weddings may be celebrated on Friday evenings and Saturdays at 11:00am and 2:00pm. Exceptions are made only with the permission of the Pastor. **Please contact Dee Anne Hamer at 262-367-0800 Ext. 222.**

## **Are you expecting or adopting a child?**

St. Charles is honored to serve parents seeking Baptism for their child(ren). To find out more information about our preparation process and to schedule infant/child Baptisms, **please contact the Parish Office at 262-367-0800.**

## **Becoming FULLY Catholic**

Are you unbaptized or baptized in a different Christian faith and considering becoming Catholic? Are you a baptized Catholic who did not receive the Sacraments of Reconciliation, Eucharist and/or Confirmation? St. Charles provides an adult formation process that will help you discover Jesus and His Holy Catholic Church. **Please contact Jess Panlener at 262-367-0800 Ext. 212.**

## **Small Groups**

The Small Group movement at St. Charles offers you a way to authentically seek Jesus in small faith sharing communities. Small Groups gather in members' homes throughout Lake Country during Fall and Lent. For more information, **please contact Jess Panlener at 262-367-0800 Ext. 212.**

**OUTREACH SERVICES TEAM: Terri Blazek: 262-367-7608,**  
jtblazek@wi.rr.com

**Prayer Network: Pat Blavat 262-719-1341**

**St. Vincent De Paul: 262-367-0800 (Parish Office)**

**Need Home Communion: 262-367-0800 (Parish Office)**

# PRAYER & CALENDAR

## Mass Intentions for the Week of December 23rd



### **Sunday, December 23 ~ Fourth Weekend of Advent**

7:00 am † Mary Ann Vos  
9:00 am † Ervin & Esther Wunsch and Anton & Marie Hallada  
11:00 am † Eugene & Sophia Smocke  
6:00 pm † Richard Boehm, Sr.

### **Monday, December 24 ~ Christmas Eve**

3:00 pm † Arnold Berg  
5:00 pm † Larry & Alice Majewski  
11:00 pm Living and Deceased Members of St. Charles & Saint Teresa of Calcutta

### **Tuesday, December 25 ~ Christmas Day**

7:00 am † Bernadette Ney  
9:00 am † Louis & Beverly Enderlin  
11:00 am † Amy (Lamerand) Zott

### **Wednesday, December 26**

8:30 am † John Connolly

### **Thursday, December 27**

8:30 am † Steve Sobieski

### **Friday, December 28**

8:30 am † Frank S. & Clara Widowski

### **Saturday, December 29**

8:30 am † Steve Sobieski  
5:00 pm † Rachel Hansen

### **Sunday, December 30 ~ Feast of the Holy Family**

7:00 am † Francis O'Hara  
9:00 am † Robert Sizer  
11:00 am † Greg Blattner  
6:00 pm Living and Deceased Members of the Dionne Family

## Calendar for the Week of Dec.23rd

### **Sunday, December 23 ~ Fourth Weekend of Advent**

"Little Lambs" Childcare, 3K Classroom, 9:00am & 11:00am Masses

### **Monday, December 24 ~ Christmas Eve**

Parish Office Closed at Noon  
Christmas Eve Mass, CH, 3:00pm  
Christmas Eve Mass, CH, 5:00pm  
Christmas Eve Pre-Concert, CH, 10:30pm  
Christmas Eve Mass (Incense), CH, 11:00pm

### **Tuesday, December 25 ~ Christmas Day**

Parish Office Closed  
No School  
Christmas Day Mass, CH, 7:00am  
Christmas Day Mass (Incense), CH, 9:00am  
Christmas Day Mass (Incense), CH, 11:00am

### **Wednesday, December 26**

No School

### **Thursday, December 27**

No School  
50th Wedding Anniversary for Ron & Linda Kroll, CH, during 8:30am Mass  
SVdP Food Pantry Open, Lawn Street, 10:00am-Noon and 5:30pm-7:00pm  
Christian Women's Christmas Party, PH, 12:00pm-3:00pm  
Blood Drive, BR, 1:00pm - 6:00pm

### **Friday, December 28**

No School  
Anointing of the Sick within Mass, CH, 8:30am  
Morning Mom's Group, LTC, 10:00am

### **Saturday, December 29**

### **Sunday, December 30 ~ Feast of the Holy Family**

"Little Lambs" Childcare, 3K Classroom, 9:00am & 11:00am Masses

# A LOOK AT ST. CHARLES PARISH & SCHOOL

## St. Charles Parish Staff

Pastor: Fr. Ken Omernick  
 Associate Pastor: Fr. Patrick Behling  
 Pastoral Associate: Elizabeth Thompson  
 Assistant To The Pastor: Terrie Carew  
 Parish Receptionist: Debra Hertel  
 Parish Administrative Assistants: Kathy Gillstrom  
 Parish Administrative Assistants: Dee Anne Hamer  
 Director of Administrative Services: Marge Beck  
 Director of Operations: Mike Cattani  
 Director of Maintenance: Tim Orzechowski  
 Communications Specialist & Bulletin: Renee Krier  
 Wedding Coordinator: Dee Anne Hamer  
 Capital Campaign Continuation Coordinator: Karen Dejewski  
 Principal: Dan Garvey  
 School Administrative Assistants: Lisa Moehrke  
 School Administrative Assistants: Karen Dejewski  
 Advancement Officer: Christina Holmes  
 Director of Child Formation (Ps-5): Alicia Van Hecke  
 Administrative Assistant Child Formation: Trish Gilchrist  
 Director of Student & Young Adult Ministries: Nick Scanlan  
 Student Associate Director (Edge 6-8): Corrie Christiaansen  
 Administrative Assistant of Student & Young Adult Ministries: Laura Zgrabik  
 Director of Liturgical Music: Dr. Aaron Mathews  
 Associate Musician: Kathleen Latzke-Daley  
 Liturgical Music Assistant: Maria Notch  
 Liturgical Administrative Assistant: Erika Rutley  
 Director of Adult & Family Ministry: Nancy Neuser  
 Director of Stewardship: Nancy Van De Laarschot  
 Director of Discipleship: Jess Panlener

## St. Charles Parish School Teachers and Staff Members

### Administration

Dan Garvey, Principal  
 Karen Dejewski & Lisa Moehrke,  
 Administrative Assistants  
 Heidi Cary, Instructional Resource  
 Christina Holmes, Advancement  
 Officer

### Specials Teachers

Diane Binger, STEM Coordinator/Art  
 JJ Maltch, Physical Education  
 Claire Schroettner, Spanish  
 Jeanne Marie Stalteri, Music  
 Fred Suchy, Technology  
 Debra Acker, Librarian  
 Stephanie Delmore, Guidance  
 Counselor  
 Karen Barry, Reading Specialist

### Teachers

Debbie Birch, 3K  
 Allison Brandt, 4K  
 Brianna Alexander, 4K  
 Tammy Biebel, 5K  
 Kelly Jampedro, 5K  
 Patty Young, 1st Gr.  
 Amy Ellenbecker, 2nd Gr.  
 Kimberly Halvorson, 2nd Gr.  
 Melissa Henkel, 3rd Gr.  
 Ann Hanaway, 4th Gr.  
 Carla Ritzman, 5th Gr.  
 Colleen Smet, 5th Gr. & 7th Gr.  
 Language Arts/Lit.

### Instructional Aides

Steph Bauer  
 Mary Brauer  
 Donna Ceschi  
 Laurie DeAngelis  
 Julie Keenan  
 Yvone Markwardt  
 Madonna McFarland  
 Deb Supple  
 Tracy Melzer

### Middle School

Kathy Mullen, Math  
 Mariah Nelson, Social Studies  
 Christine Birk, Language Arts/Lit.  
 Diane Grolemond, Science  
 Jordan Roth, Religion

### Additional School Office Staff

Megan Duncan, Lunchroom  
 Coordinator  
 John Kosak, Lunch Staff  
 Molly Wiedenman, Lunch Staff

### Band Director

Connie Fellows



## Bulletin Advertisers of the Week

Please support our advertisers!

### North Lake Family Dentistry



*Patty Erickson, DDS*  
 W315N7641 Hwy 83, North Lake, WI  
 Phone: 262.966.7668  
 www.nlakefamilydentistry.com  
 northlakefamilydentistry@gmail.com

### Werbelow Construction

General Contracting \* New Construction \* Additions  
 Remodeling \* Windows \* Doors \* Siding \* Decks  
 Residential \* Commercial

**Call Dan @ 262-689-1243**

Proudly Serving All of Southeastern Wisconsin

### Abbreviation Key

BR = Borromeo Room	MD = Music Dept
CH = Church	MR = Music Room (School)
CHPL = Chapel	PH = Parish Hall
CR = Conference Room	PO = Parish Office
HFRC = Holy Family Rec Center	SK = Staff Kitchen
IMC = Instructional Media Center	SR = Science Room
LTC = Life Teen Cafe (Student Lounge)	TL = Teachers' Lounge
CGS = Catechesis of the Good Shepherd	

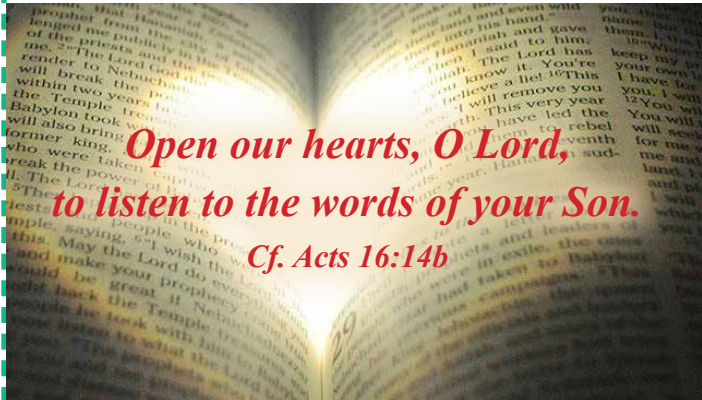
## St. Charles Pastoral Council Members

The Pastoral Council is a group of parishioners, chosen from and by the parish community, who along with Fr. Ken determine the direction of the parish and oversee pastoral activity and temporal affairs as the community attempts to fulfill the mission of the church. Please contact any of the leadership members listed below with questions or concerns by calling or emailing [pastoralcouncil@stcharleshartland.org](mailto:pastoralcouncil@stcharleshartland.org).

Chairperson:	John Zingsheim	262-893-6588
Vice-Chair:	Tom Shannon	262-696-4128
Secretary:	Lori Stortz	262-369-5509
Trustees:	Michael Berendes	262-367-4324
	Paul Prah	262-369-2386



Spend 15 minutes every day in prayer with Scripture!



- Do I remain in Jesus, and allow him to remain in me by purity of heart? What commandments am I struggling to follow? How can I follow Jesus more closely, to give him all the space he needs to live in me?
- Have I ever 'lost' Jesus? What did I do when I realized this? Where can I go to find him? Do I trust that Jesus will reveal himself to me if I ask? How can I seek Jesus more during these seasons of Advent and Christmas?

**Readings for the Week of December 23rd**

**Sunday:** 1 Sm 1:20-22, 24-28/Ps 84:2-3, 5-6, 9-10 [cf. 5a]/ 1 Jn 3:1-2, 21-24/Lk 2:41-52  
**Monday:** 1 Jn 2:18-21/Ps 96: 1-2, 11-12, 13 [11a]/Jn 1:1-18  
**Tuesday:** Nm 6:22-27/Ps 67:2-3, 5, 6, 8 [2a]/Gal 4:4-7/Lk 2:16-21  
**Wednesday:** 1 Jn 2:22-28/Ps 98:1, 2-3ab, 3cd-4 [3cd]/Jn 1:19-28  
**Thursday:** 1 Jn 2:29—3:6/Ps 98:1, 3cd-4, 5-6 [3cd]/Jn 1:29-34  
**Friday:** 1 Jn 3:7-10/Ps 98:1, 7-8, 9 [3cd]/Jn 1:35-42  
**Saturday:** 1 Jn 3:11-21/Ps 100:1b-2, 3, 4, 5 [2a]/Jn 1:43-51  
**Next Sunday:** Is 60:1-6/Ps 72:1-2, 7-8, 10-11, 12-13 [cf. 11]/ Eph 3:2-3a, 5-6/Mt 2:1-12

**READ. REFLECT. RESPOND. REST.**



Cutout and keep in your bible for reference!

### Christmas Season Mass Schedule

**Christmas Mass Schedule**  
 Monday, Dec. 24th ~ Christmas Eve  
 3:00pm Children's Mass, 5:00pm and 11:00pm

Tuesday, Dec. 25th ~ Christmas Day  
 7:00am, 9:00am and 11:00am

**Solemnity of Mary Mass Schedule**  
 Monday, Dec. 31st ~ New Year's Eve  
 5:00pm

Tuesday, Jan. 1st ~ New Year's Day  
 9:00 and 11:00am

### End of Year Giving

In this season of giving, we wish to thank you for your generous financial support of St. Charles Parish and School and The Cornerstone Capital Campaign. The 2018 tax changes have created new opportunities for planning end-of-year charitable giving. St. Charles' School Annual Development Fund, The Cornerstone Project or parish operations fund would all appreciate any year-end donation support. Please contact your financial adviser to determine potential tax deductible savings for donations.

For information about contributing an end-of-year donation to St. Charles Parish and School please contact Marge Beck, Director of Administrative Services, at 262-367-0800 or mbeck@stcharleshartland.org. The Parish Office will be open Wednesday, Dec. 26 through Friday, Dec. 28 to receive year-end donations. We kindly ask that donations be received by noon Dec. 28th so they can be properly recorded for 2018. God Bless you for supporting St. Charles and Christ's work in Lake Country.

### Parish School and Office Holiday Hours

The St. Charles School Office will be closed from noon on Friday, Dec. 21st - Wednesday, Jan. 2, 2019. The school office will reopen on Thursday, Jan 3rd.

The Parish Office will be closed noon on Monday, Dec. 24th and all day Tuesday, Dec. 25th. Also the Parish Office will be closed on Tuesday, Jan.1st.

<p>PARISH SUPPORT FOR THE WEEKEND OF NOVEMBER 11TH</p>	2018-2019	2017-2018
	Envelopes..... \$21,386.00 Offertory..... \$1,820.55 Weekend Total..... \$23,206.55 YTD..... \$632,284.84	Envelopes..... \$20,092.00 Offertory..... \$1,593.60 Weekend Total..... \$21,685.60 YTD..... \$584,587.28

Please pray for the repose of the souls of  
**Barbara (Barb) Mayo & Gregory Blattner**  
May their souls and the souls of all the faithful departed  
REST IN CHRIST'S PEACE.



# Do you seek Peace?

If you are:

- Unbaptized
- Baptized in a different Christian faith
- Baptized Catholic but not Confirmed


This opportunity is for you!

## Explore Becoming FULLY Catholic

Tuesdays at 5:00 pm - 6:15 pm  
St. Charles Life Teen Cafe  
Little Lambs Childcare Available (free)


You are invited to join with others who are seeking to know more about Jesus and the Catholic Church. Bring your questions, your insights, and your faith story to this first session of faith exploration.

To RSVP or for more information about the process, please contact Jess Panlener, Director of Discipleship at 262.367.0800 or [jpanlener@stcharleshartland.org](mailto:jpanlener@stcharleshartland.org).



### Respect For Life Ad Campaign

The St. Charles Respect for Life Ministry will participate in the Wisconsin Right to Life ad campaign. Every year the Wisconsin Right to Life sponsors a pro-life newspaper ad in the Waukesha Freeman to commemorate the Jan. 22, 1973 Supreme Court decision legalizing abortion. This ad is two pages of names of individuals who support the sanctity of life from conception to natural death. **On the weekend of Jan. 5th & 6th the St. Charles Respect for Life Ministry will collect names of parishioners who would like to support this effort.** The Wisconsin Right to Life is asking for a \$1.00 per name donation to help offset the cost of the ad.



### St. Charles Night at Culver's in Hartland

Monday, Jan. 14th from 5:00-8:00 pm  
Mention that you are with St. Charles and the School receives 10% of that evening's sales! Thanks for your support!

### Silent Weekend Preached Retreat for Men

February 1-3, 2019

Redemptorist Retreat Center, Oconomowoc  
Starts on Friday at 6:15 pm through Sunday 1:00 pm

*This year's theme is "Witnesses of the Redeemer: Mission to a Wounded World."*

To be a witness of the Redeemer is to commit oneself to the person of Jesus Christ and His Mission, to His teachings and attitudes. We are called and sent by the Lord Jesus to share hope with others, to have compassion for them and to identify with their struggles. It is in knowing; that God is the God of life and therefore every human life is precious and to be cherished, nurtured and respected. Come and enjoy some well - deserved rest and quiet during a "spiritual vacation!"

Offering: \$210 covers room, board and materials.

To register please call 262-567-6900 or visit [www.redemptoristretreat.org](http://www.redemptoristretreat.org). For additional information, contact Anthony Ramsey at 262-367-0294.

ST. VINCENT de PAUL SOCIETY



The members and patrons of St. Charles' Society of St. Vincent de Paul wish you a blessed and joyous Christmas! We also extend our gratitude for your financial and pantry donations that helped those in our community who live with the challenges of poverty.

**FOOD PANTRY NEEDS: pancake mix, juice, cereal, canned hams, peanut butter, mayonnaise, salad dressing and paper towels.**

The food pantry is located at 229 Lawn Street, Hartland and is open Tuesdays between 10 am and noon. It is also open on the second and fourth Tuesday evening of each month between 5:30 pm and 7 pm. If you need other assistance or would like to join our ministry, please contact SVdP at 262-367-0800.



Little Lambs Childcare Leaders and Volunteers Needed!

Our Little Lambs program is searching for **QUALIFIED** childcare workers who have child care or teaching experience, flexibility, patience and a love for children.

If you enjoy working with children and helping to provide a fun, safe and educational environment where you can make a difference, this may be the position for you.

**We are looking to fill a number of VOLUNTEER and PAID positions.** Teens thru adults may apply. Inquiries can be made directly to Marge Beck, Director of Administrative Services at 262-367-0800 or mbeck@stcharleshartland.org.

*Little Lambs is a free weekly childcare program that serves children walking through age 4 in the 3K classroom during the 9am and 11am Sunday Masses and provides childcare for other evening and weekend special events at St. Charles.* St. Charles school parents can earn volunteer hours and high school/confirmation students can earn service hours.



Young Adult Care Package Ministry

Have you finished high school and starting the next chapter in your life? Are you between the ages of 18 and 25? Whether you are attending college, working, in the military or discerning your next step, St. Charles would like to continue being your faith home. Please send us your current address so we can keep in touch with you. Sign up on the sign-up shelf or online at <http://www.lakecountrylifeteen.com/sign-up.html>.

*Entrust your works to the LORD, and your plans will succeed. Proverbs 16:3*



**Jan. 18, Feb. 15, March 15**

(Held on the 3rd Friday of the month)  
6:30-7:30 pm Holy Hour in the Church  
Open Gym & Refreshments to Follow

All families are welcome to join us to **ADORE** Jesus in the Blessed Sacrament at St. Charles Parish. Each night will feature worship music, a short teaching for both children and parents, followed by open gym and refreshments.

Children of **ALL AGES**, birth on up are **very welcome**. This will be geared at families with young children and elementary school aged children, but anyone is most welcome to join us.

Needed: Fall Fest Volunteer Coordinators

We're looking for two people to help organize the great number of volunteers who work at Fall Fest each September. This volunteer position involves some work over the summer as many parishioners are recruited after Masses and many other parishioners sign up online.

This is a great spot for a husband and wife team or two friends or maybe two siblings. Jane and Jeff Walloch, the coordinators for many years, are stepping down but they have generously offered to train their replacements. The entire Fall Fest Committee is a terrific crew.

Please prayerfully consider this position and see if you are being called to it or suggest someone that would be great. For questions, please call Kristin Walsh at 262-337-3776 or Liz Malosh at 262-385-6539.



## Glorious Advent Concert at St. Charles Parish School

The Annual Advent Concert was filled with lovely songs and animated faces from St. Charles Parish School students in grades 4K through 8th Grade. Mrs. Stalteri, hired as the music teacher in September, kept the many voices on key. Students dressed in fancy clothes and hundreds of parents and family members snapped photos of their sweet little ones.

*May your Advent continue to be blessed and calm as we await for a joyous and beautiful Christmas.*



## OPEN HOUSE

Sunday, Jan. 27th  
10 am to 1 pm

Join us for 9 am Mass followed by tours of the school



### Visit and Learn About:

- Our vibrant Catholic school in Lake Country with space available in every grade
- Small class sizes, state-of-the-art technology, dedicated STEM Lab, specialized instructional resources including a reading specialist and guidance counselor
- Specialized classes in Spanish, Technology, STEM, Art and music offerings in band and choir
- Award-winning athletic programs

Come meet our new Principal Mr. Dan Garvey!

To learn more about St. Charles and schedule a tour or shadow day please call 262-367-2040 or visit [www.stcharleshartland.com](http://www.stcharleshartland.com).

Learn how your child will excel at St. Charles Catholic School!

# MARDI GRAS

*Celebrating a Catholic Tradition!*

**St. Charles Parish & School  
2019 Auction and Dinner**

**Saturday, March 9, 2019**  
**Milwaukee Marriott West • 5:30 pm**



## St. Charles Jesus & Me

St. Nick's Birthday  
Party For Jesus!

Held Dec. 12th



## Christian Women Christmas Potluck

Thursday, Dec. 27th

Social hour starts at noon with lunch at 1:00 pm in the Borromeo Room. Women interested in learning more about the St. Charles Christian Women are invited. Please bring a dish to pass.



MICHELLE  
*Olympic Speed Skater,  
Grateful blood recipient.*



## St. Charles Parish & School Community Blood Drive

Thursday, Dec. 27th  
1:00 PM to 6:00 PM

For an appointment call 1-800-RED CROSS (1-800-733-2767) or visit [redcrossblood.org](http://redcrossblood.org).

You can save up to 15 minutes when you donate blood by using RapidPass! Visit [redcrossblood.org/RapidPass](http://redcrossblood.org/RapidPass) for more information.

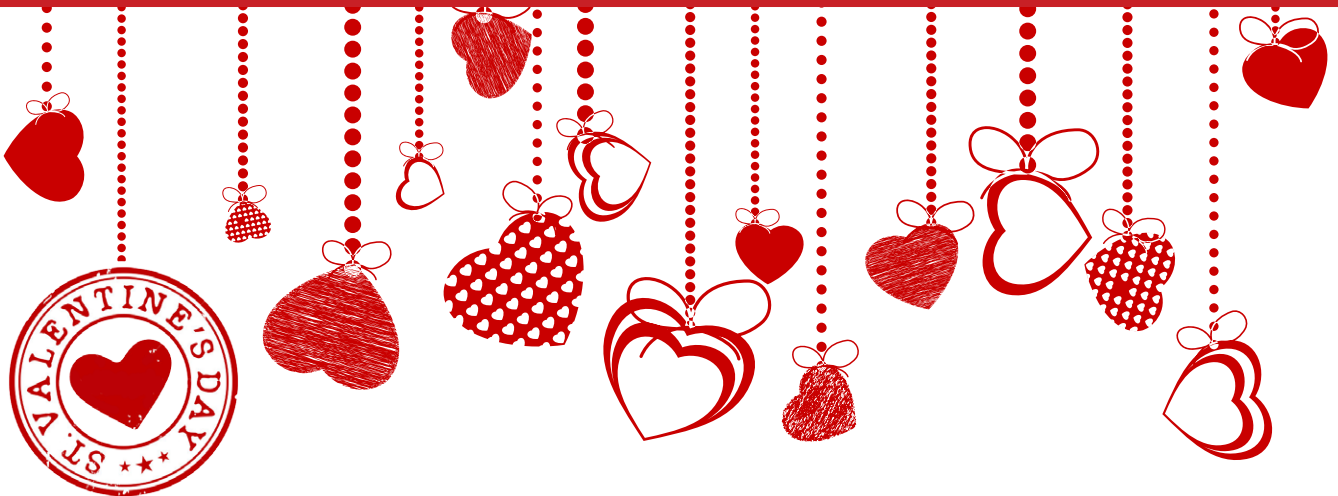


Mark your calendars for  
the 10th annual  
Chili Cook-Off!

Saturday, Feb. 2, 2019  
following the 5pm Mass

Get your recipes in order!  
More details to come in future bulletins.

Questions? Contact Nancy Van De Laarschot at 262-367-0800 Ext. 214 or [nvandelaarschot@stcharleshartland.org](mailto:nvandelaarschot@stcharleshartland.org)



# St. Valentine's Married Couples Night Out

**Saturday, Feb. 9, 2019**

**6:00-8:00 pm St. Charles Borromeo Room**

**hosted by the Knights of Columbus Council 3562**

**Childcare will be provided**

.....  
Celebrate Valetine's Day with your spouse with an evening of faith and community by reflecting on the Sacrament of Marriage.

The evening starts with a romantic meal followed by a program led by Green Bay Deacon Ray Ambrosius and his wife Cathy as they talk about renewing vocations of the Domestic Church. The Catholic family has the same mission as the Church – to pray together and build each other up in the faith.

Please RSVP on the sign-up shelf for the dinner and childcare by Thursday, Jan. 31st.

For more information contact Tom McGilvra at 262-542-6481 or [mcgiltom@mac.com](mailto:mcgiltom@mac.com).

*There will be a free will offering at the door.*

.....



# CHRISTMAS LETTER FROM THE ARCHBISHOP



## CHRISTMAS 2018

*“Glory to God in the highest and on earth peace to those on whom His favor rests.” (Luke 2:14)*

Dear Brothers and Sisters in Christ,

This Advent and Christmas, as we enter our 175th anniversary as an archdiocese, we have been continually blessed with many gifts from God: the daily gift of life, new additions to our families, sacramental celebrations and milestones, and finding more ways, big or small, to be closer to God. In this season, may we embrace the spirit of giving and sharing with our loved ones. In the spirit of giving and sharing, we think of family first. Whether it be immediate family, friends, or our Catholic community, the importance of family has been, and will continue to be, the focus of our archdiocesan family as we move into the New Year.

We see God’s love for us in the Holy Family. Carrying precious cargo, these loving parents remained faithful to God. Even in the midst of great danger and personal sacrifice, Mary and Joseph put Jesus first. What a wonderful example to always remember to put our Savior first, and place our families in His care -- where they will be forever blessed.

We also see God’s love in our surroundings, which have been “the face of God” in southeastern Wisconsin for 175 years. As our archdiocesan historian, Fr. Steven Avella, writes:

*“Catholicism manifests itself in words and deeds of charity, in care for the poor and helpless, in education for children and adults, and also in brick and mortar.*

*The presence of the Catholic Church in any community can often be seen by examining the skyline. Church steeples vault into the air, large portions of urban or rural ground are set aside for churches, residences for clergy and sisters, and hospitals. In these locations, Catholics believe men and women see the face of God.”*

As we begin to reflect on 175 years of our Church family in southeastern Wisconsin, please be sure to take time to treasure your family during this very special season. The ability to give love and to receive love is the greatest gift we can share as followers of Christ. Through Christ, we are one family.

May peace and joy be with you this Christmas, and throughout the New Year.

I Am, Sincerely Yours in Christ,

Most Reverend Jerome E. Listecki  
Archbishop of Milwaukee